

CERTIFICATE OF LOCATION OF GOVERNMENT CORNER

Northeast Corner of Section 32, Township 135N, Range 31W, 5th P.M.

STATE OF MINNESOTA, County of Cass

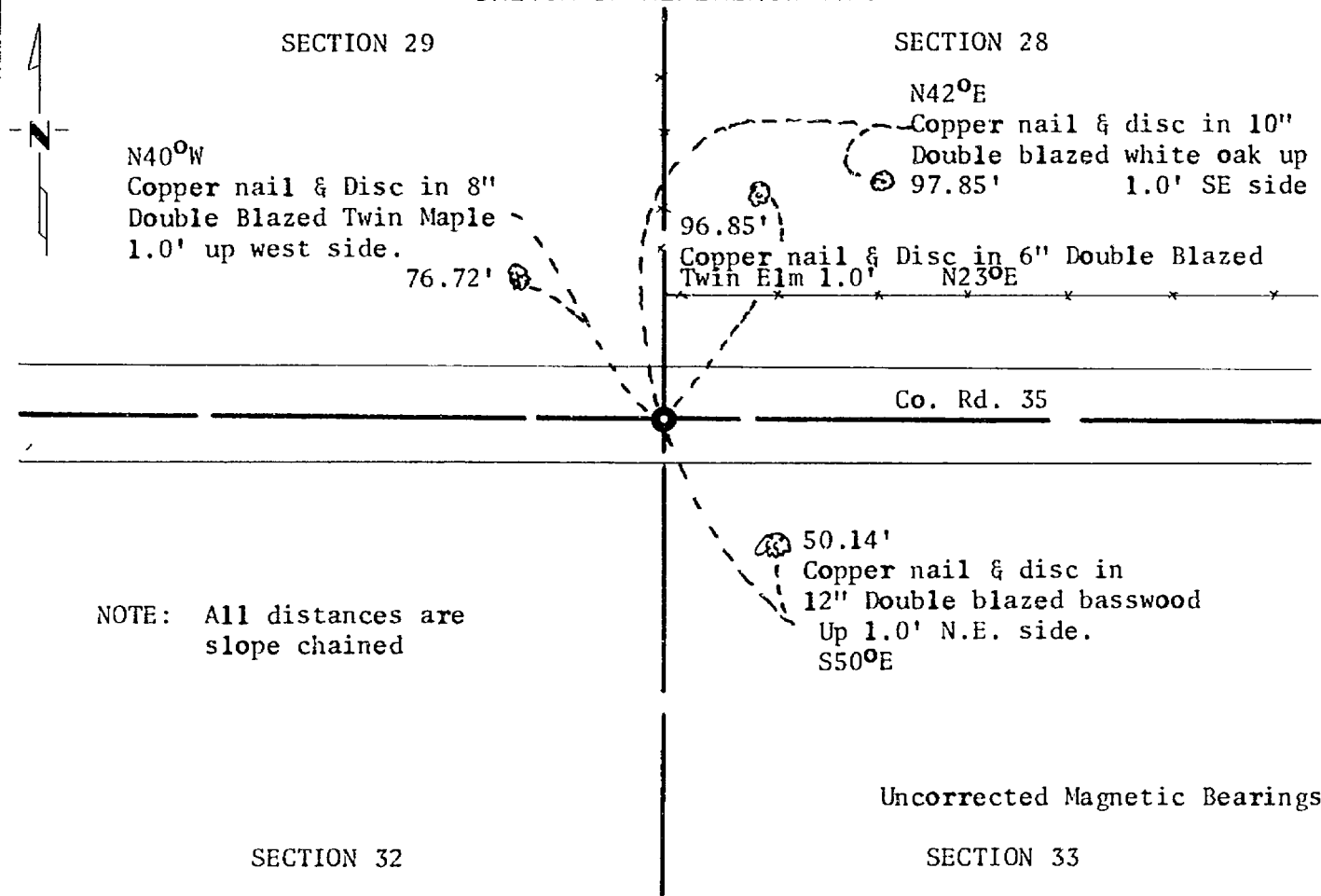
At the corner location shown on the sketch:

On 12/27/78 found nothing.
DATE

left monument as found, lowered monument, removed monument (explain)

On 12/27/78 placed a 2" square steel post with Mn/DOT cap.
DATE

SKETCH OF REFERENCE TIES



Statement of evidence relative to this corner location is on back of page.

I hereby certify that this document and the data contained herein was prepared by me or under my direct supervision.

Alphonse P. Delle 2/15/79
SIGNATURE DATE

Registration No. 11873

Land Surveyor, Professional Engineer

County Surveyor, County Engineer

OFFICE OF THE COUNTY RECORDER

County of Cass

I hereby certify that this document was filed in the Co. Recorders office at 11:45 A. .M. on the 24 day of Aug. A.D., 1979.

County Recorder Beulah Hendricks
Ms

By _____, Deputy

DOCUMENT NO. 247568 MICKUELL

Statement of Evidence: Northeast Corner Section 32, Township 135 North,
Range 31 West, 5th Principal Meridian

The original public land survey was run in 1870 and a wood post was set to mark the corner.

The township records indicate that the area roads were in place in 1898.

No other records could be found and longtime area residents knew of no corners in place.

In 1979 the Minnesota Department of Transportation set this corner at the occupation fences north-south and the road east-west. This location agrees with a proportionate distance to the occupation quarter and section corners for 2½ miles west and one mile east. This indicates that the fence locations are a direct result of previous survey work.

For details and survey analysis contact the Minnesota Department of Transportation Surveys Office in Brainerd.