

CERTIFICATE OF LOCATION OF GOVERNMENT CORNER

North Quarter Corner of Section 32, Township 135N, Range 31W, 5th P.M.

STATE OF MINNESOTA, County of Cass

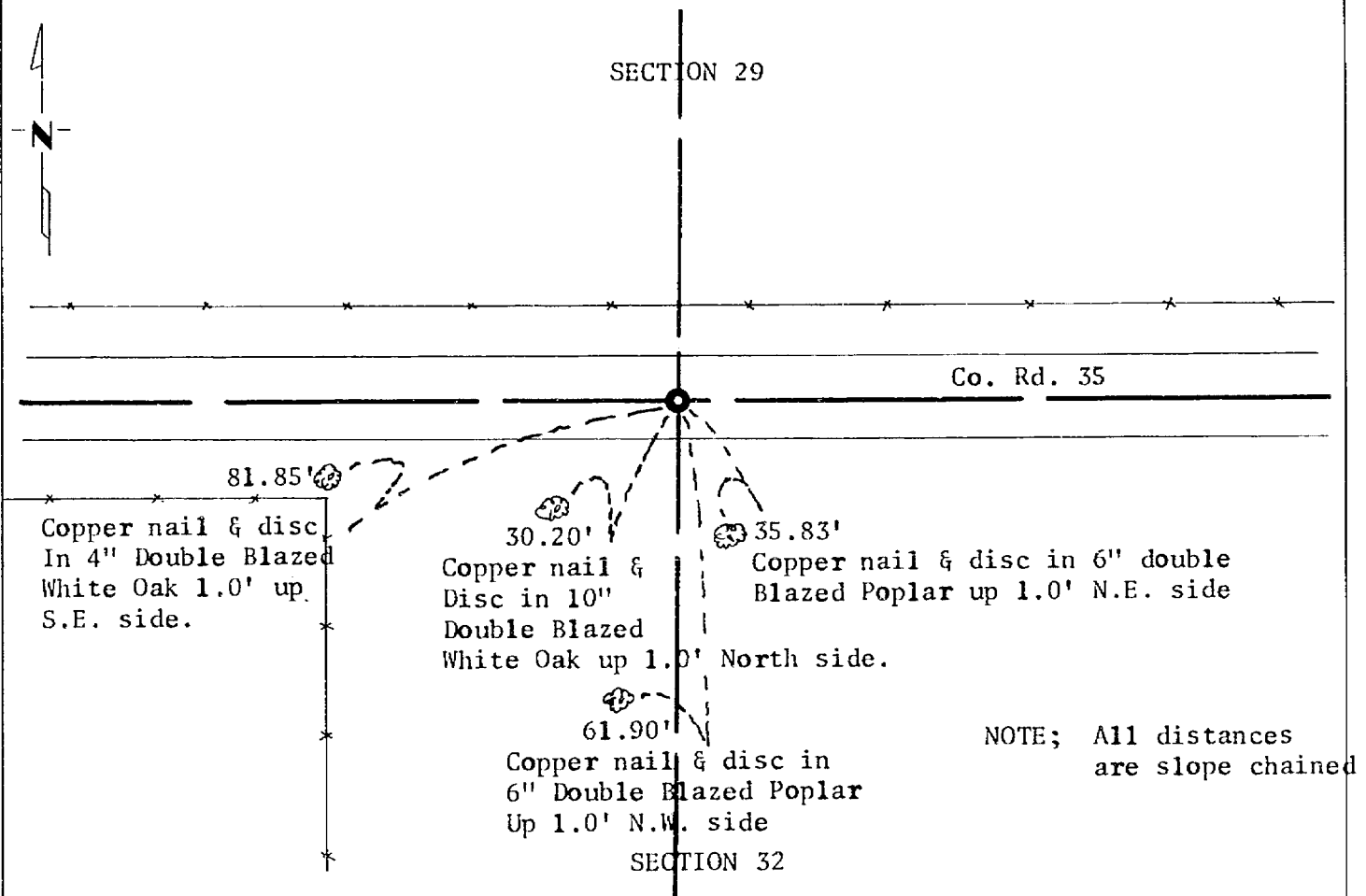
At the corner location shown on the sketch:

On 12/29/78 found a nothing

left monument as found, lowered monument, removed monument (explain)

On 12/29/78 placed a 2" square steel post with Mn/DOT cap

SKETCH OF REFERENCE TIES



Statement of evidence relative to this corner location is on back of page.

I hereby certify that this document and the data contained herein was prepared by me or under my direct supervision.

Alphonse P. Delle 2/15/79

SIGNATURE

DATE

Registration No. 11873

Land Surveyor, Professional Engineer

County Surveyor, County Engineer

OFFICE OF THE COUNTY RECORDER

County of Cass

I hereby certify that this document was filed in the Co. Recorders office at 10:45 A.M. on the 24 day of Aug. A.D., 1979

County Recorder Bentley Handwerker

By _____, Deputy

DOCUMENT NO. 247567

MICROFILM

Statement of Evidence: North Quarter Corner Section 32, Township 135 North,
Range 31 West, 5th Principal Meridian.

The Original Public Land Survey was run in 1870 and a wood post was set to mark the corner.

The Township records indicate the east-west road was in place in 1898.

No other records could be found and longtime residents knew of no corners in place.

In 1979 the Minnesota Department of Transportation searched for the corner at the occupation lines and at a lost location, nothing was found. The corner was set at its lost location, midway and on line between the northwest and northeast corners of the section. The fence occupation south does not agree with other fence occupations in the area.

For details and survey analysis contact the Minnesota Department of Transportation District Surveys Office in Brainerd.