

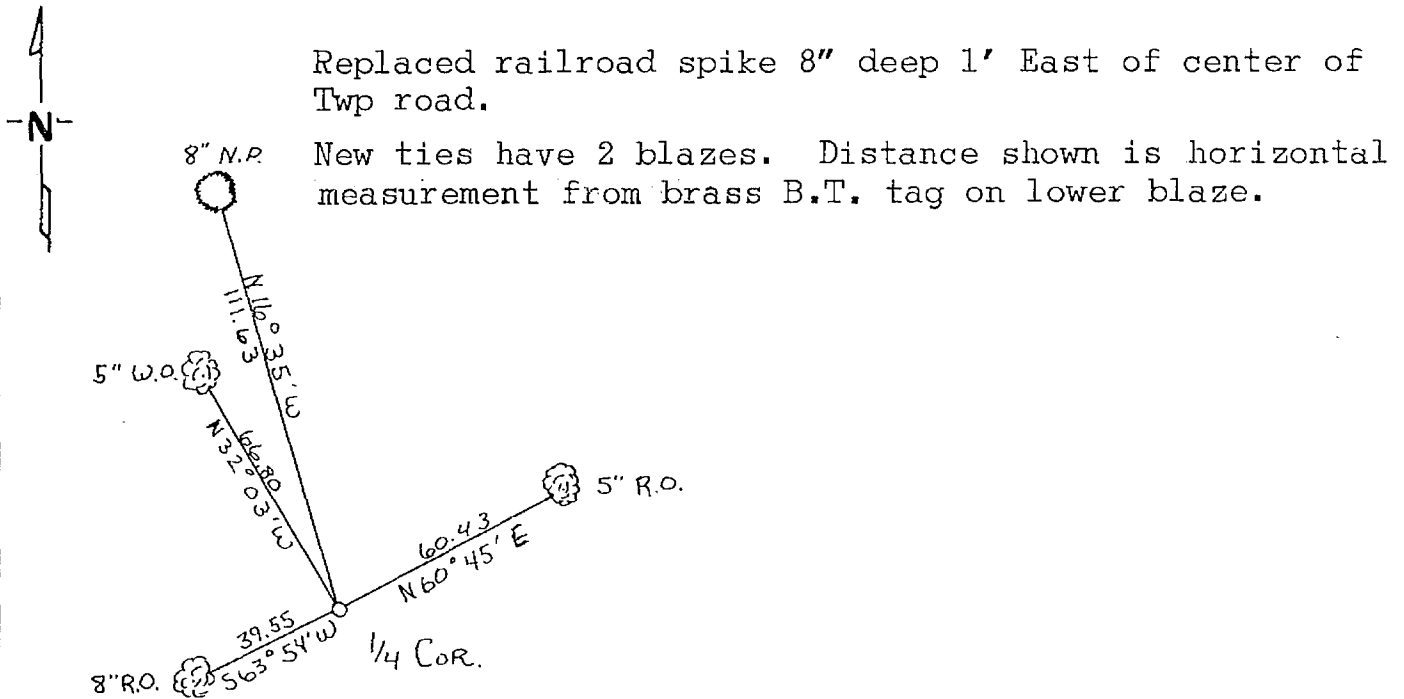
# CERTIFICATE OF LOCATION OF GOVERNMENT CORNER

East Quarter Corner of Section 30, Township 139, Range 29, 5th P.M.  
 STATE OF MINNESOTA, County of Cass

At the corner location shown on the sketch:

- On 10-10-75 found a Railroad spike 8" deep 1' East of center  
DATE
- left monument as found,  lowered monument,  removed monument (explain)
- On 11-10-75 placed a Cast Iron Monument 4" Dia. Top X 20" long  
DATE under surface of County Road 118.

### SKETCH OF REFERENCE TIES



Scale 1" = 50'

~~Statement of evidence relative to this corner location is on back of page.~~

I hereby certify that this document and the data contained herein was prepared by me or under my direct supervision.

Walter E. Curro 12-3-75  
SIGNATURE DATE

Registration No. 11395

- Land Surveyor,  Professional Engineer
- County Surveyor,  County Engineer

OFFICE OF THE REGISTER OF DEEDS  
 County of Cass

I hereby certify that this document was filed in the Reg. of Deeds office at 9 A .M. on the 5 day of January A.D., 1976

Register of Deeds Beulah Hendricka

By NB, Deputy

DOCUMENT NO. 223896