

# CERTIFICATE OF LOCATION OF GOVERNMENT CORNER

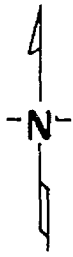
West Quarter Corner of Section 25, Township 140, Range 31, 5th P.M.

STATE OF MINNESOTA, County of Cass

At the corner location shown on the sketch:

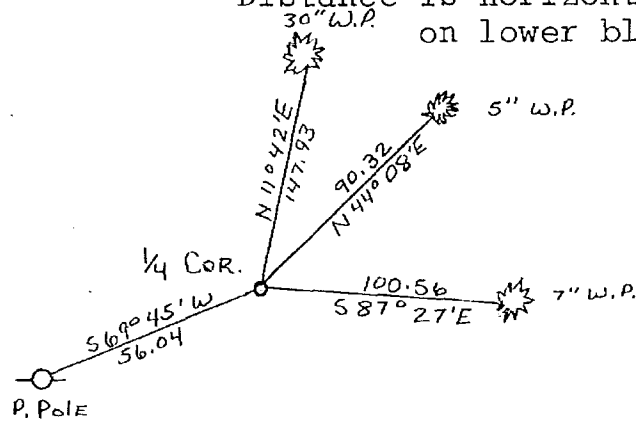
- On 9-25-74 found a X on 3' Dia. rock made by John W. Curo for a tie for the west  $\frac{1}{4}$  corner
  - left monument as found,  lowered monument,  removed monument (explain)
- On 10-13-75 placed a Cast Iron Monument 4" Dia. Top X 20" long 4" under surface of County Road #40.

### SKETCH OF REFERENCE TIES



Quarter corner set in center of County Road #40 in place of a 3/4"X12" pipe set from an X on a 3 foot dia. rock S 86° 21' W 20.77 feet marked by John W. Curo, a Registered Land Surveyor, in the State of Minnesota.

Ties have 2 blazes with a brass B.T. tag on lower blaze. Distance is horizontal measurement to brass B.T. tag on lower blaze.



Not to scale

~~Statement of evidence relative to this corner location is on back of page.~~

I hereby certify that this document and the data contained herein was prepared by me or under my direct supervision.

Walter E. Curo SIGNATURE      12-3-75 DATE

Registration No. 11395

- Land Surveyor,  Professional Engineer
- County Surveyor,  County Engineer

OFFICE OF THE REGISTER OF DEEDS  
County of Cass

I hereby certify that this document was filed in the Reg. of Deeds office at 9 A .M. on the 5 day of January A.D., 19 76

Register of Deeds Bentley Hendrick  
By NAB, Deputy

DOCUMENT NO. 223 890