

CERTIFICATE OF LOCATION OF GOVERNMENT CORNER

West Quarter _____ Corner of Section 15, Township 140, Range 31, 5th P.M.

STATE OF MINNESOTA, County of Cass

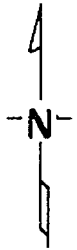
At the corner location shown on the sketch:

On 10-20-75 found a Bent 2" X 24" pipe
DATE

left monument as found, lowered monument, removed monument (explain)

On 10-20-75 placed a Cast Iron Monument 4" Dia. Top X 20" long
DATE under surface of C.S.A.H. #6 in Int. of Twp road.

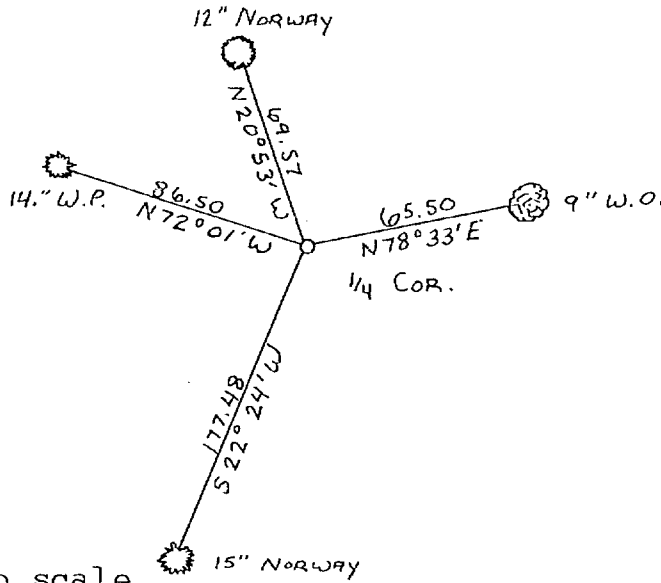
SKETCH OF REFERENCE TIES



Set corner in place of bent 2"X24" pipe.

Corner is in center of C.S.A.H. #6.

New ties have 2 blazes. Distance shown is horizontal measurement from brass B.T. tag on lower blaze.



No scale

~~Statement of evidence relative to this corner location is on back of page.~~

I hereby certify that this document and the data contained herein was prepared by me or under my direct supervision.

Walter E. Larsen SIGNATURE 12-3-75 DATE

Registration No. 11395

- Land Surveyor, Professional Engineer
 County Surveyor, County Engineer

OFFICE OF THE REGISTER OF DEEDS

County of Cass

I hereby certify that this document was filed in the Reg. of Deeds office at 9 A .M. on the 5 day of January A.D., 19 76

Register of Deeds Beverly Hendricks

By NO Deputy

DOCUMENT NO. 223889