

CERTIFICATE OF LOCATION OF GOVERNMENT CORNER

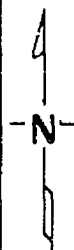
Northwest _____ Corner of Section 23, Township 140, Range 31, 5th P.M.

STATE OF MINNESOTA, County of Cass

At the corner location shown on the sketch:

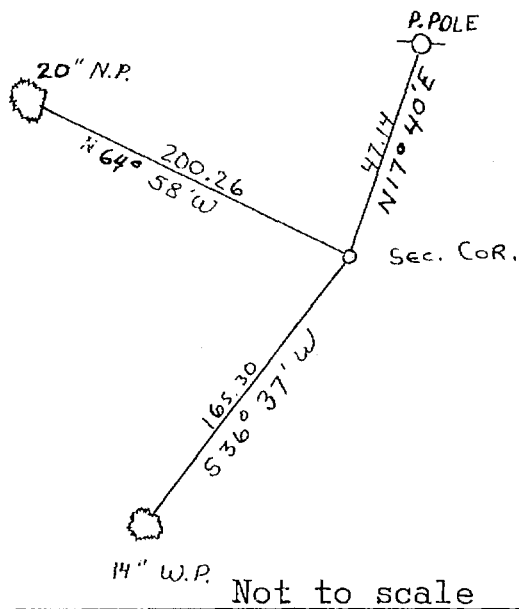
- On _____ found a _____
DATE
- left monument as found, lowered monument, removed monument (explain)
- On 10-22-75 placed a Cast Iron Monument 4" Dia. Top X 20" long
DATE under surface of Twp road.

SKETCH OF REFERENCE TIES



Set corner on line with N 1/4 corner and E 1/16 corner of Section 22 and 1329.13 feet east of east 1/16 corner and 2658.26 feet East of N 1/4 corner, in center of Twp road.

New ties have 2 blazes. Distance shown is horizontal measurement from brass B.T. tag on lower blaze.



Not to scale

~~Statement of evidence relative to this corner location is on back of page.~~

I hereby certify that this document and the data contained herein was prepared by me or under my direct supervision.

Walter E. Curro
SIGNATURE

12-3-75
DATE

Registration No. 11395

- Land Surveyor, Professional Engineer
 County Surveyor, County Engineer

OFFICE OF THE REGISTER OF DEEDS

County of Cass

I hereby certify that this document was filed in the Reg. of Deeds office at 9 A .M. on the 5 day of January A.D., 19 76

Register of Deeds Beulah Hendricks

By NB Deputy

DOCUMENT NO. 223888