

Index No. \_\_\_\_\_

### CERTIFICATE OF LOCATION OF GOVERNMENT CORNER

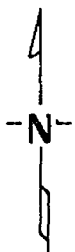
South Quarter Corner of Section 21, Township 139, Range 30, 5th P.M.

STATE OF MINNESOTA, County of Cass

At the corner location shown on the sketch:

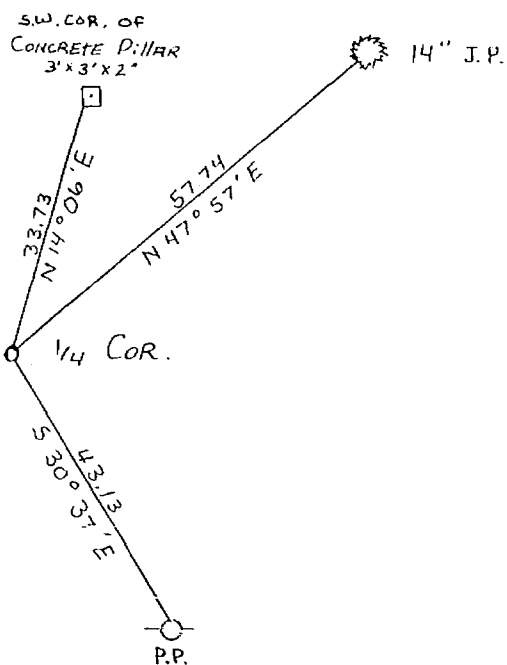
- On 10-8-75 found a P.K. nail for 1/4 corner  
DATE
- left monument as found,  lowered monument,  removed monument (explain)
- On 11-10-75 placed a Cast Iron Monument 4" Dia. Top X 20" long.  
DATE  
Flush with surface of C.S.A.H. #87.

#### SKETCH OF REFERENCE TIES



Set corner in center of C.S.A.H. #87 in place of P.K. nail.

New ties have 2 blazes. Distance shown is horizontal measurement from brass B.T. tag on lower blaze.



Not to scale

~~Statement of evidence relative to this corner location is on back of page.~~

I hereby certify that this document and the data contained herein was prepared by me or under my direct supervision.

Walter E. Cass  
SIGNATURE

12-3-75  
DATE

Registration No. 11395

- Land Surveyor,  Professional Engineer
- County Surveyor,  County Engineer

OFFICE OF THE REGISTER OF DEEDS  
County of Cass

I hereby certify that this document was filed in the Reg. of Deeds office at 9 A .M. on the 5 day of January A.D., 19 76

Register of Deeds Bentley Hendricks  
By N O , Deputy

DOCUMENT NO. 223 887