

Index No. _____

CERTIFICATE OF LOCATION OF GOVERNMENT CORNER

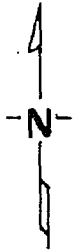
Northeast _____ Corner of Section 8, Township 140, Range 27, 5th P.M.

STATE OF MINNESOTA, County of Cass

At the corner location shown on the sketch:

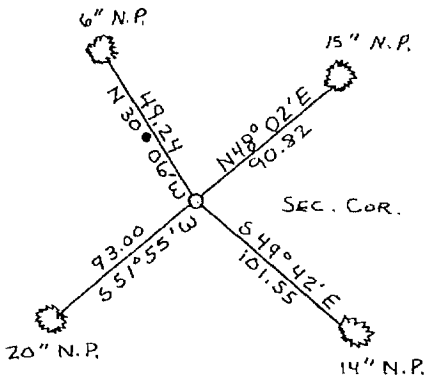
- On 9-2-75 found a Bent 20" rifle barrel in place for section
DATE
corner replaced with a cast iron monument.
 left monument as found, lowered monument, removed monument (explain)
- On 10-13-75 placed a Cast Iron Monument 4" Dia. Top X 20" Long,
DATE
4" below surface of Twn. road.

SKETCH OF REFERENCE TIES



Section corner set in place of bent rifle barrel in center of road north and south and 3' south of center of road east and west.

New ties have 2 blazes. Distance shown is horizontal measurement from brass B.T. tag on lower blaze.



Not to scale

~~Statement of evidence relative to this corner location is on back of page.~~

I hereby certify that this document and the data contained herein was prepared by me or under my direct supervision.

Walker E. Curro
SIGNATURE

12-13-75
DATE

Registration No. 11395

- Land Surveyor, Professional Engineer
- County Surveyor, County Engineer

OFFICE OF THE REGISTER OF DEEDS

County of Cass

I hereby certify that this document was filed in the Reg. of Deeds office at 9 A .M. on the 5 day of January A.D., 1976

Register of Deeds Beulah Hendrick
By NB, Deputy

DOCUMENT NO. 223884