

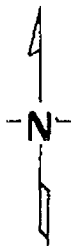
# CERTIFICATE OF LOCATION OF GOVERNMENT CORNER

East Quarter \_\_\_\_\_ Corner of Section 7, Township 139, Range 29, 5th P.M.  
 STATE OF MINNESOTA, County of Cass

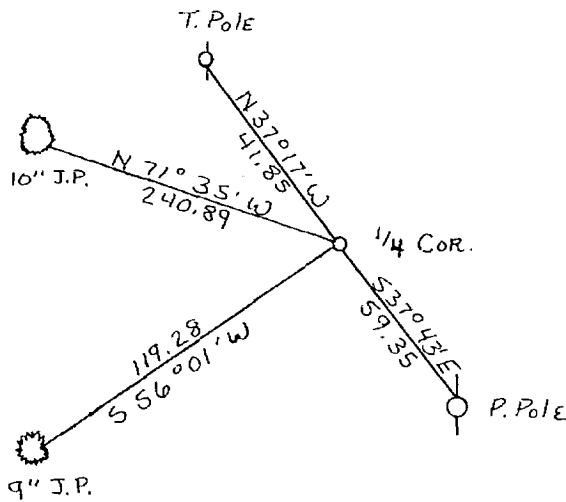
At the corner location shown on the sketch:

- On 11-4-75 found a Bent 2"X3' pipe  
DATE
- left monument as found,  lowered monument,  removed monument (explain)
- On 11-4-75 placed a Cast Iron Monument 4" Dia. Top X 20" long  
DATE under surface of Twp road.

### SKETCH OF REFERENCE TIES



Set corner in place of bent 2"X3' pipe for East Quarter corner. 3 feet west of center of Twp road.  
 New ties have 2 blazes. Distance shown is horizontal measurement from brass B.T. tag on lower blaze.



No scale

~~Statement of evidence relative to this corner location is on back of page.~~

<p>I hereby certify that this document and the data contained herein was prepared by me or under my direct supervision.</p> <p style="text-align: center;"><u>Walter E. Curw</u>      <u>12-13-75</u>  <small>SIGNATURE</small>      <small>DATE</small></p> <p>Registration No. <u>11395</u></p> <p><input checked="" type="checkbox"/> Land Surveyor, <input type="checkbox"/> Professional Engineer  <input type="checkbox"/> County Surveyor, <input type="checkbox"/> County Engineer</p>	<p style="text-align: center;">OFFICE OF THE REGISTER OF DEEDS</p> <p>County of <u>Cass</u></p> <p>I hereby certify that this document was filed in the Reg. of Deeds office at <u>9 A</u> .M. on the <u>5</u> day of <u>January</u> A.D., 19 <u>76</u></p> <p>Register of Deeds <u>Brenda Hendricka</u>                  By <u>N6</u> , Deputy</p> <p>DOCUMENT NO. <u>223883</u></p>
--	---