

CERTIFICATE OF LOCATION OF GOVERNMENT CORNER

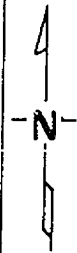
Southeast Corner of Section 33, Township 140, Range 29, 5th P.M.

STATE OF MINNESOTA, County of Cass

At the corner location shown on the sketch:

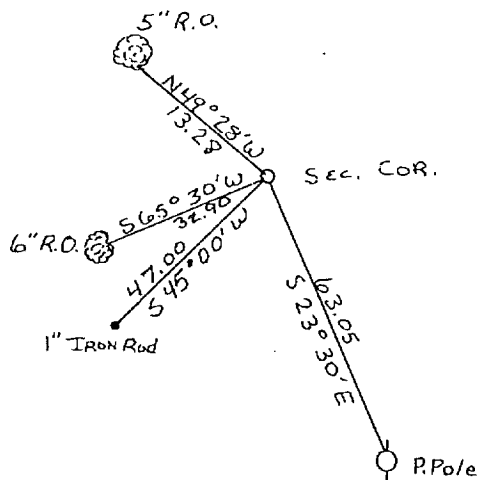
- On 7-10-75 found a 1" iron rod B.T. set by John W. Curo and
DATE
rotted cedar post for section corner.
 left monument as found, lowered monument, removed monument (explain)
- On 10-22-75 placed a Cast Iron Monument 4" Dia. Top X 20" long
DATE
under surface of Twp road.

SKETCH OF REFERENCE TIES



Set corner in place of rotted cedar post in edge of road 8' West of center from 1" iron rod S 45 W 47.00 feet.

New ties have 2 blazes with brass B.T. tag on lower blaze. Distance shown is horizontal measurement from brass B.T. tag on lower blaze.



No scale

~~Statement of evidence relative to this corner location is on back of page.~~

I hereby certify that this document and the data contained herein was prepared by me or under my direct supervision.

Walter E. Curo 12-18-75
SIGNATURE DATE

Registration No. 11395

- Land Surveyor, Professional Engineer
- County Surveyor, County Engineer

OFFICE OF THE REGISTER OF DEEDS
 County of Cass

I hereby certify that this document was filed in the Reg. of Deeds office at 9 A .M. on the 5 day of January A.D., 19 76

Register of Deeds Paula Hendricka
 By N6, Deputy

DOCUMENT NO. 223880