

CERTIFICATE OF LOCATION OF GOVERNMENT CORNER

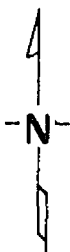
North Quarter _____ Corner of Section 15, Township 140, Range 31, 5th P.M.

STATE OF MINNESOTA, County of Cass

At the corner location shown on the sketch:

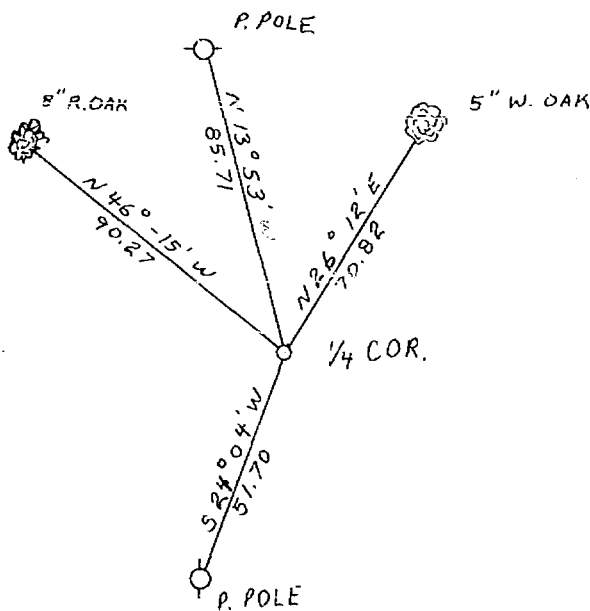
- On _____ found a _____
DATE
- left monument as found, lowered monument, removed monument (explain)
- On 11-4-75 placed a Cast Iron Monument 4" Dia. Top X 20" long.
Flush with surface of C.S.A.H. #6.

SKETCH OF REFERENCE TIES



Set corner in center of C.S.A.H. #6 at the intersection of north-south center line of Section 15 with the north line of Section 15.

New ties have 2 blazes. Distance shown is horizontal measurement from brass B.T. tag on lower blaze.



NOT TO SCALE

~~Statement of evidence relative to this corner location is on back of page.~~

I hereby certify that this document and the data contained herein was prepared by me or under my direct supervision.

Walter E. Curo
SIGNATURE

12-18-75
DATE

Registration No. 11395

Land Surveyor, Professional Engineer

County Surveyor, County Engineer

OFFICE OF THE REGISTER OF DEEDS
County of Cass

I hereby certify that this document was filed in the Reg. of Deeds office at 9 A .M. on the 5 day of January A.D., 19 76

Register of Deeds Beulah Hendricks

By N.B., Deputy

DOCUMENT NO. 223878