

CERTIFICATE OF LOCATION OF GOVERNMENT CORNER

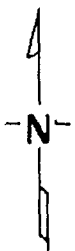
East Quarter Corner of Section 36, Township 142, Range 29, 5th P.M.

STATE OF MINNESOTA, County of Cass

At the corner location shown on the sketch:

- On 5/6/75 found a Gov't. Survey bearing tree
DATE
- left monument as found, lowered monument, removed monument (explain)
- On 6/17/75 placed a Cast Iron County Monument 4" Dia. Top X 20"
DATE
Long. Flush with surface of highway.

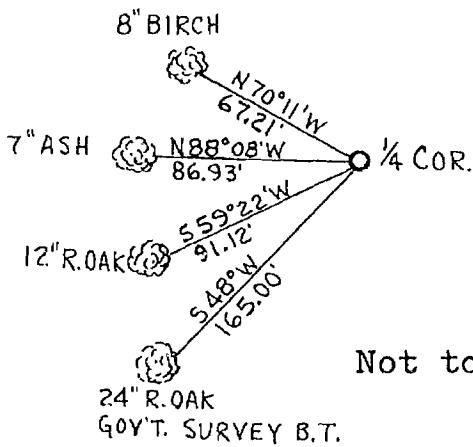
SKETCH OF REFERENCE TIES



Quarter corner set from Gov't. Survey bearing tree
Survey of 1918. 24" R. Oak S48°W 165.00'

Corner is 9' east of center of C.S.A.H. 39

New ties have 2 blazes. Distance shown is horizontal
measurement from nail in lower blaze.



Not to scale

~~Statement of evidence relative to this corner location is on back of page.~~

I hereby certify that this document and the data contained herein was prepared by me or under my direct supervision.

Robert F. Schneider 6/23/75
SIGNATURE DATE

Registration No. 5740

- Land Surveyor, Professional Engineer
- County Surveyor, County Engineer

OFFICE OF THE REGISTER OF DEEDS

County of Cass

I hereby certify that this document was filed in the Reg. of Deeds office at 9 A .M. on the 23rd day of June A.D., 1975

Register of Deeds Beulah Hendricks
By BJK **MICROFILM**, Deputy

DOCUMENT NO. 220984

220984