

CERTIFICATE OF LOCATION OF GOVERNMENT CORNER

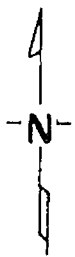
South Quarter _____ Corner of Section 21, Township 141, Range 31, 5th P.M.

STATE OF MINNESOTA, County of Cass

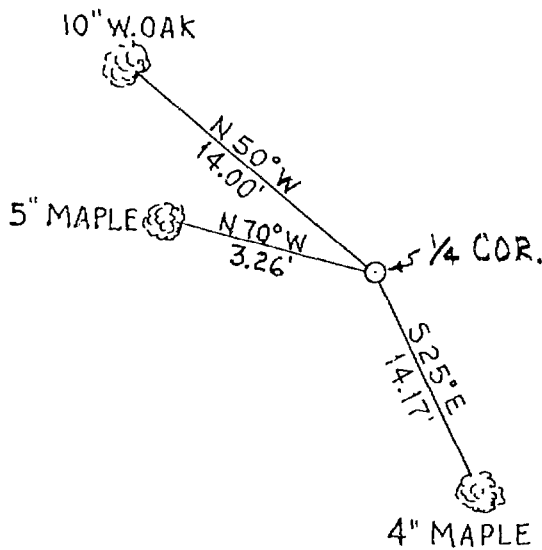
At the corner location shown on the sketch:

- On 4/16/75 found a No evidence of corner or accessories
DATE
- left monument as found, lowered monument, removed monument (explain)
- On 5/2/75 placed a Cast Iron County Monument 4" Dia. Top X 20" Long
DATE Projecting 6" above ground.

SKETCH OF REFERENCE TIES



Quarter corner set by single proportionate measurement between section corners.



All bearings to ties are approximate.
All ties have two blazes with measurements taken to nail in lower blaze.

~~Statement of evidence relative to this corner location is on back of page.~~

I hereby certify that this document and the data contained herein was prepared by me or under my direct supervision.

R F Schmidt 5/2/75
SIGNATURE DATE

Registration No. 5740
 Land Surveyor, Professional Engineer
 County Surveyor, County Engineer

OFFICE OF THE REGISTER OF DEEDS

County of Cass

I hereby certify that this document was filed in the Reg. of Deeds office at 9 A .M. on the 13 day of MAY A.D., 19 75

Register of Deeds Blulah Hendricka

By N.O., Deputy

DOCUMENT NO. 220355