

COUNTY DITCH No 9

29

FIELD BOOK

361

17

KEUFFEL & ESSER CO.

DRAWING MATERIALS

AND

SURVEYING INSTRUMENTS.

NEW YORK.

CHICAGO. ST. LOUIS. SAN FRANCISCO. MONTREAL.

TABLES FOR EXCAVATIONS AND EMBANKMENTS.

DISTANCES FROM CENTER OF ROADWAY FOR CROSS-SECTIONING.
ROADWAY 18 FEET WIDE. SIDE SLOPES 1 TO 1.
FOR SINGLE TRACK EXCAVATION.

"Copyright, 1895, by Keuffel & Esser Co."

	0	.1	.2	.3	.4	.5	.6	.7	.8	.9	
0	9.0	9.1	9.2	9.3	9.4	9.5	9.6	9.7	9.8	9.9	0
1	10.0	10.1	10.2	10.3	10.4	10.5	10.6	10.7	10.8	10.9	1
2	11.0	11.1	11.2	11.3	11.4	11.5	11.6	11.7	11.8	11.9	2
3	12.0	12.1	12.2	12.3	12.4	12.5	12.6	12.7	12.8	12.9	3
4	13.0	13.1	13.2	13.3	13.4	13.5	13.6	13.7	13.8	13.9	4
5	14.0	14.1	14.2	14.3	14.4	14.5	14.6	14.7	14.8	14.9	5
6	15.0	15.1	15.2	15.3	15.4	15.5	15.6	15.7	15.8	15.9	6
7	16.0	16.1	16.2	16.3	16.4	16.5	16.6	16.7	16.8	16.9	7
8	17.0	17.1	17.2	17.3	17.4	17.5	17.6	17.7	17.8	17.9	8
9	18.0	18.1	18.2	18.3	18.4	18.5	18.6	18.7	18.8	18.9	9
10	19.0	19.1	19.2	19.3	19.4	19.5	19.6	19.7	19.8	19.9	10
11	20.0	20.1	20.2	20.3	20.4	20.5	20.6	20.7	20.8	20.9	11
12	21.0	21.1	21.2	21.3	21.4	21.5	21.6	21.7	21.8	21.9	12
13	22.0	22.1	22.2	22.3	22.4	22.5	22.6	22.7	22.8	22.9	13
14	23.0	23.1	23.2	23.3	23.4	23.5	23.6	23.7	23.8	23.9	14
15	24.0	24.1	24.2	24.3	24.4	24.5	24.6	24.7	24.8	24.9	15
16	25.0	25.1	25.2	25.3	25.4	25.5	25.6	25.7	25.8	25.9	16
17	26.0	26.1	26.2	26.3	26.4	26.5	26.6	26.7	26.8	26.9	17
18	27.0	27.1	27.2	27.3	27.4	27.5	27.6	27.7	27.8	27.9	18
19	28.0	28.1	28.2	28.3	28.4	28.5	28.6	28.7	28.8	28.9	19
20	29.0	29.1	29.2	29.3	29.4	29.5	29.6	29.7	29.8	29.9	20
21	30.0	30.1	30.2	30.3	30.4	30.5	30.6	30.7	30.8	30.9	21
22	31.0	31.1	31.2	31.3	31.4	31.5	31.6	31.7	31.8	31.9	22
23	32.0	32.1	32.2	32.3	32.4	32.5	32.6	32.7	32.8	32.9	23
24	33.0	33.1	33.2	33.3	33.4	33.5	33.6	33.7	33.8	33.9	24
25	34.0	34.1	34.2	34.3	34.4	34.5	34.6	34.7	34.8	34.9	25
26	35.0	35.1	35.2	35.3	35.4	35.5	35.6	35.7	35.8	35.9	26
27	36.0	36.1	36.2	36.3	36.4	36.5	36.6	36.7	36.8	36.9	27
28	37.0	37.1	37.2	37.3	37.4	37.5	37.6	37.7	37.8	37.9	28
29	38.0	38.1	38.2	38.3	38.4	38.5	38.6	38.7	38.8	38.9	29
30	39.0	39.1	39.2	39.3	39.4	39.5	39.6	39.7	39.8	39.9	30
31	40.0	40.1	40.2	40.3	40.4	40.5	40.6	40.7	40.8	40.9	31
32	41.0	41.1	41.2	41.3	41.4	41.5	41.6	41.7	41.8	41.9	32
33	42.0	42.1	42.2	42.3	42.4	42.5	42.6	42.7	42.8	42.9	33
34	43.0	43.1	43.2	43.3	43.4	43.5	43.6	43.7	43.8	43.9	34
35	44.0	44.1	44.2	44.3	44.4	44.5	44.6	44.7	44.8	44.9	35
36	45.0	45.1	45.2	45.3	45.4	45.5	45.6	45.7	45.8	45.9	36

Calculated by Julien A. Hall, M. Am. Soc. C. E.

For Keith's Railroad Curve Tables see end of book.

COUNTY DITCH No 9

NOTICE OF FILING OF AND HEARING ON DITCH PETITION.

Notice is hereby given that a petition, of which the following is a copy, has been filed in the office of the County Auditor of Cass County, State of Minnesota, and that a hearing will be had upon said petition before the County Board, at the office of the County Auditor of said County, in the Village of Walker on the 3rd day of October, A. D. 1916, at 11 o'clock A. M. Dated at Walker, Minn., this 6th day of September, 1916.

C. D. BACON,
County Auditor.

(Seal)

Petition For Public Ditch.

To the County Board of the County of Cass, State of Minnesota:

The undersigned land owners, whose lands will be liable to be affected by, or assessed for, the expense of the construction of the County Ditch, hereinafter described, would respectfully represent that the public health, convenience and welfare and the reclamation of wet and overflowed lands require the establishment and construction of a County Ditch along the following described route in the town of 137 N., R. 29 W., Town of Walden in said County of Cass and that the construction of the same would be of public benefit and utility.

To drain the land that is low and wet, as to make it suitable for farming and meadow land.

A general description of the proposed starting point, route and terminus of said ditch is as follows: Commencing in the northwest quarter of section 19, T. 137, R. 29, and thence running in a southeasterly direction through sections 19, 20, 21 and 28 of said town and terminating in the NE $\frac{1}{4}$ of section 28 of said town 137-29, as its outlet a small lake or Hay Creek.

And your petitioners pray that you will proceed to establish such County Ditch and cause the same to be constructed as provided by Chapter Two Hundred Thirty (230), of the General Laws of Minnesota for 1905.

Dated July 31, 1916.

AUGUST JAKELA,
CHAS. JAKELA,
W. A. HILL,
MATTI PATSON,
GUS ELLIS,
C. J. KULLA,
L. T. POLLOCK,
P. A. MURFIELD,
W. A. CURO,
WM. HARM,
I. E. KELSEY,
J. A. WINCHIP,
H. WESEMAN,

Petitioners.

9-8-15-22

INDEX

	Page
Random Line E. from S.E. Cor. 18	1.
Random Line E. from S. 1/4 sec. 17	2
True Line E. side sec. 20	2A.
Random Line E+W 1/4 line sec. 20	3+4.
Random Line W. side Sec. 20	5
Random Line S side Sec. 20	6
Plat Section 20	7
N 1/4 Line Sec 20	8
East Line Sec 18	9
☞ of Ditch	10-23
Lateral No 1	15-16
Levels (LATERAL No 1 - P. 29)	20, 24-36
FLY "	37
LAKE SOUNDINGS	37
CLEARING	38
Random line for N Line of sec 13 137.30	39
Alignment LAT No 3	40-47
LEVEL LAT No 2 of Ditch No 9	46-57
LAT No 3 of Co Ditch No 9 see Book 29. A.	

Random Lines on S. side

00 started over on $\frac{1}{4}$ Cor. Continue East.
2646.98

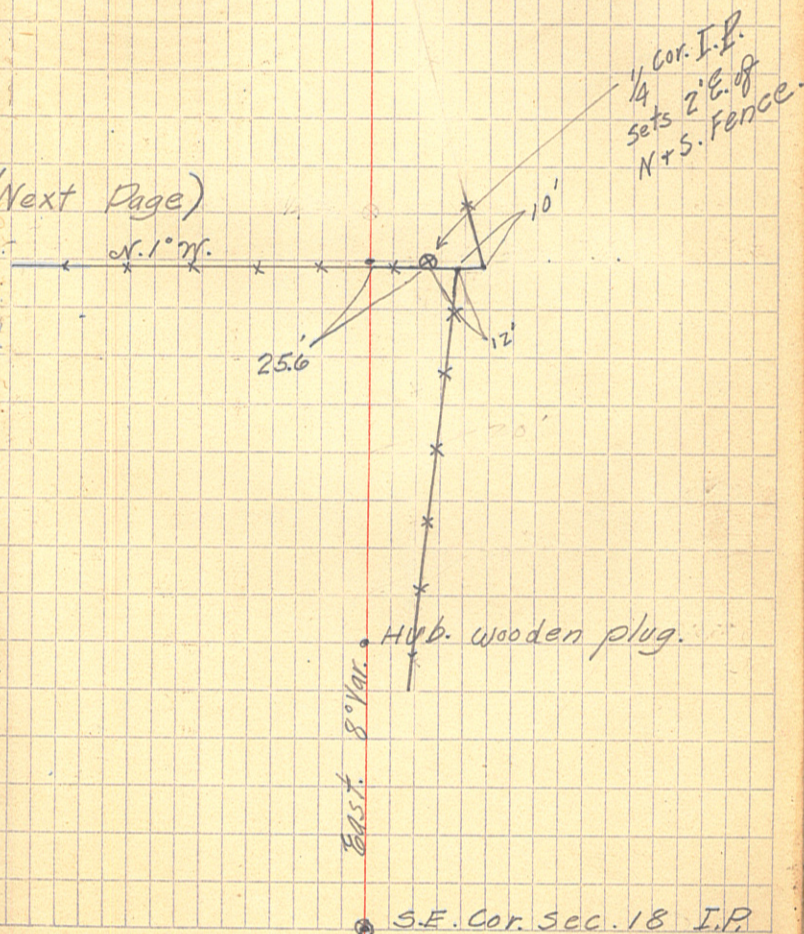
1500 E.

00

Jan. 18, 1917 - AWM-CJW-JBC - G.K.
Of Sec. 17-137-29.

1.

(Next Page)



Jan. 18/17

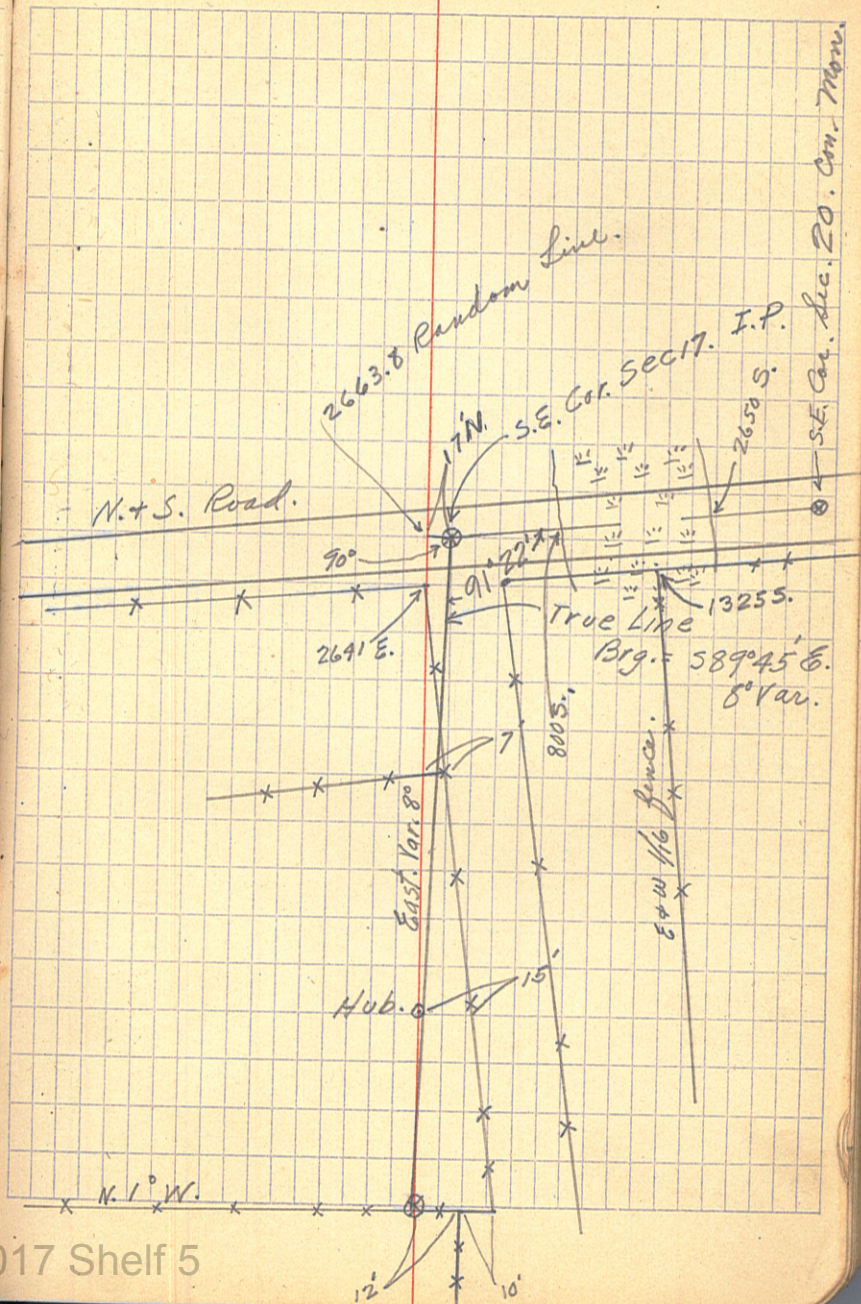
2.

1988 E.

1300 E.

00 S. 1/4 cor. Sec. 17.

Ditch Bk 017 Shelf 5



Jan. 19 - 17

started at SE Cor. Sec. 17 and
ran True Line South to SE Cor.
Sec. 20.

5.5298.3 SE Cor. sec. 20 Con. Mon.

2650 b. Edge swamp.

5.2649.2 Set True 1/4 Cor. spike in old Cor.

5.2646.7 Hub. spike.

5.800 Enter swamp.

5.700 Fence turns away from road.

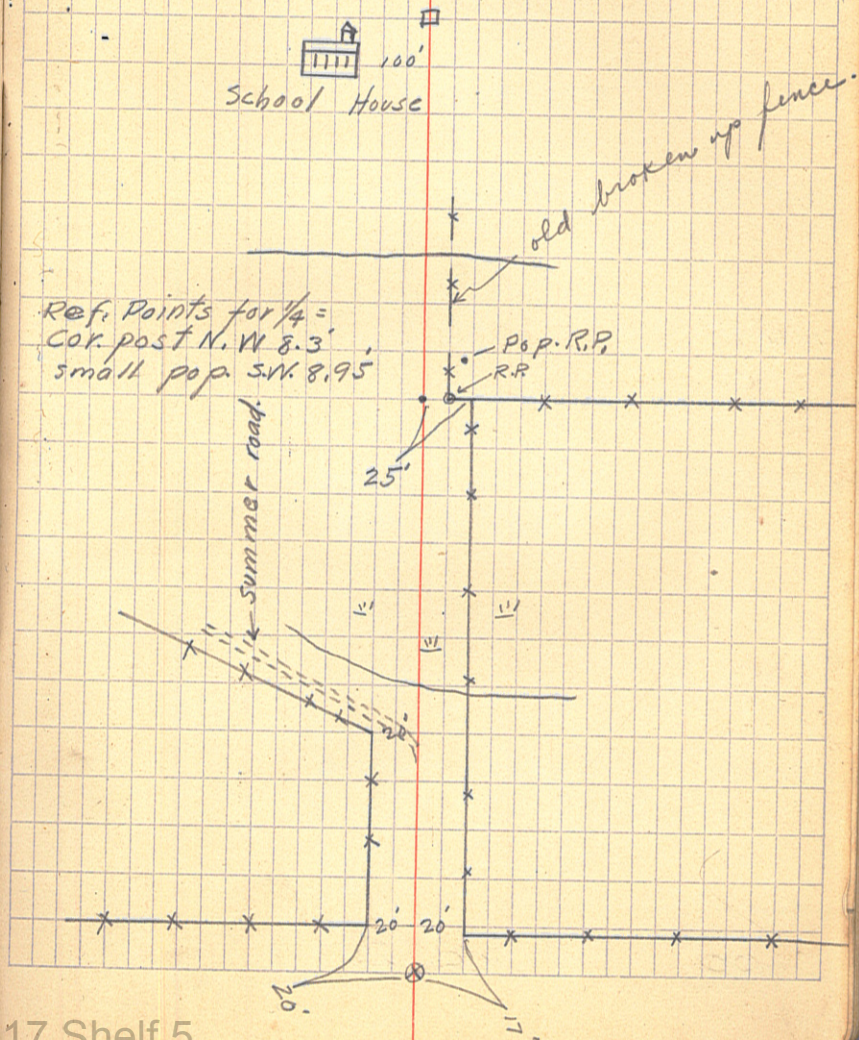
00

S.E. Cor. S.17.

A.W.M.-C9W-9BC-9K-

2A.

Note. Bearing for
whole Mile = $5.1^{\circ}E$.
Var. $8^{\circ}E$.



Random Line on E+

W 1/4 Line Sec. 20. Jan. 19-17. 3

3800 W Hub. spike.

3500 W

3424 W Cross Fence.

2968 W. Leave swamp.

2640 W. Set Hub. Approx C. section.

2200 W. Snow hub.

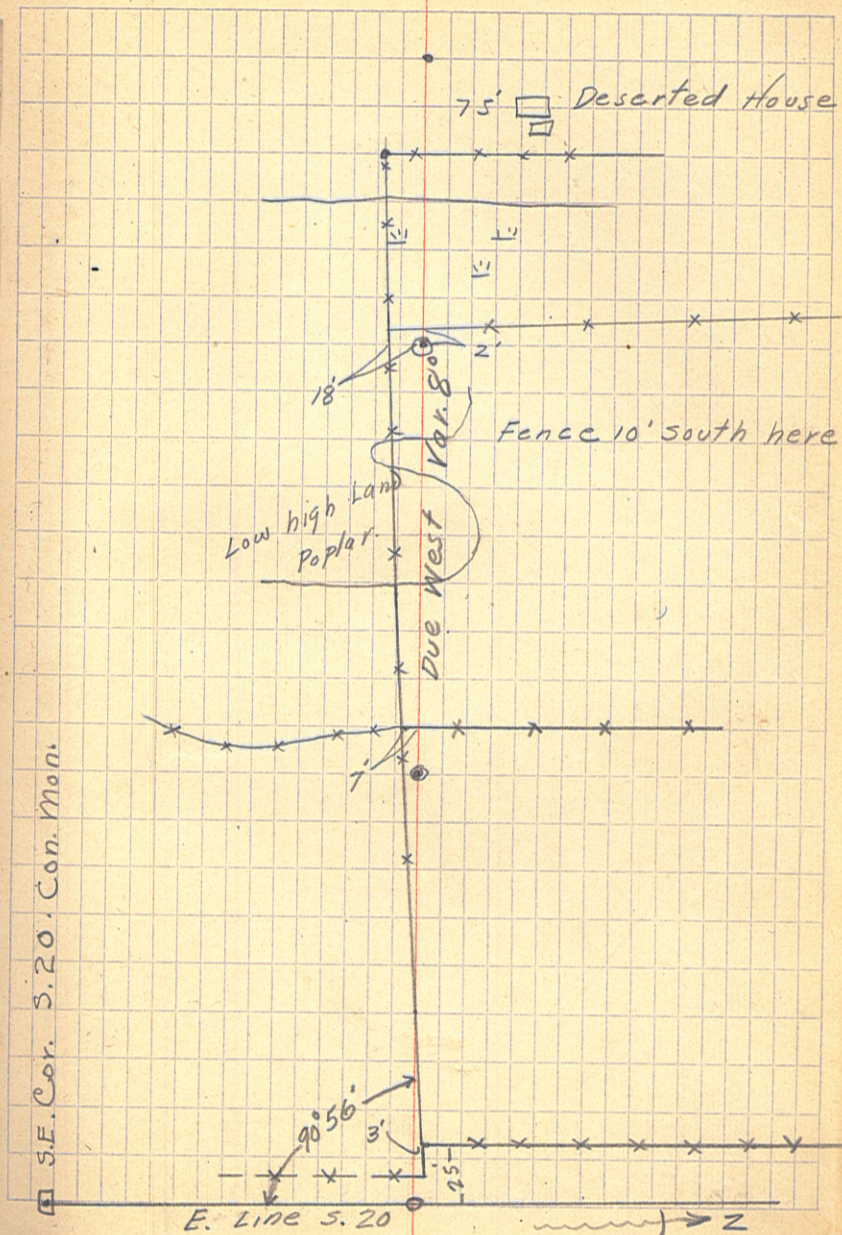
1550 W.

1325 W Cross Fence

1300 W. Hub. spike

W. 400 Cross Fence

00 E 1/4 Sec. 20



1/19/17 A.

quit for day. snowing.

5200W

Hub. spike.

4500W.

Hub. spike.

Looked for W. $\frac{1}{4}$ Cor. but could not find it.

Random Line W. side Sec. 20.

5303.58. END.

50008. Hub. spike.

38508. Hub. Oak plug.

31328. Hub. spike in top of large stump.

30008. Hub. poplar plug.

2651.758. Set $\frac{1}{4}$ Cor.

26408. Hub. spike

2315.18. Hub. Wood. plug.

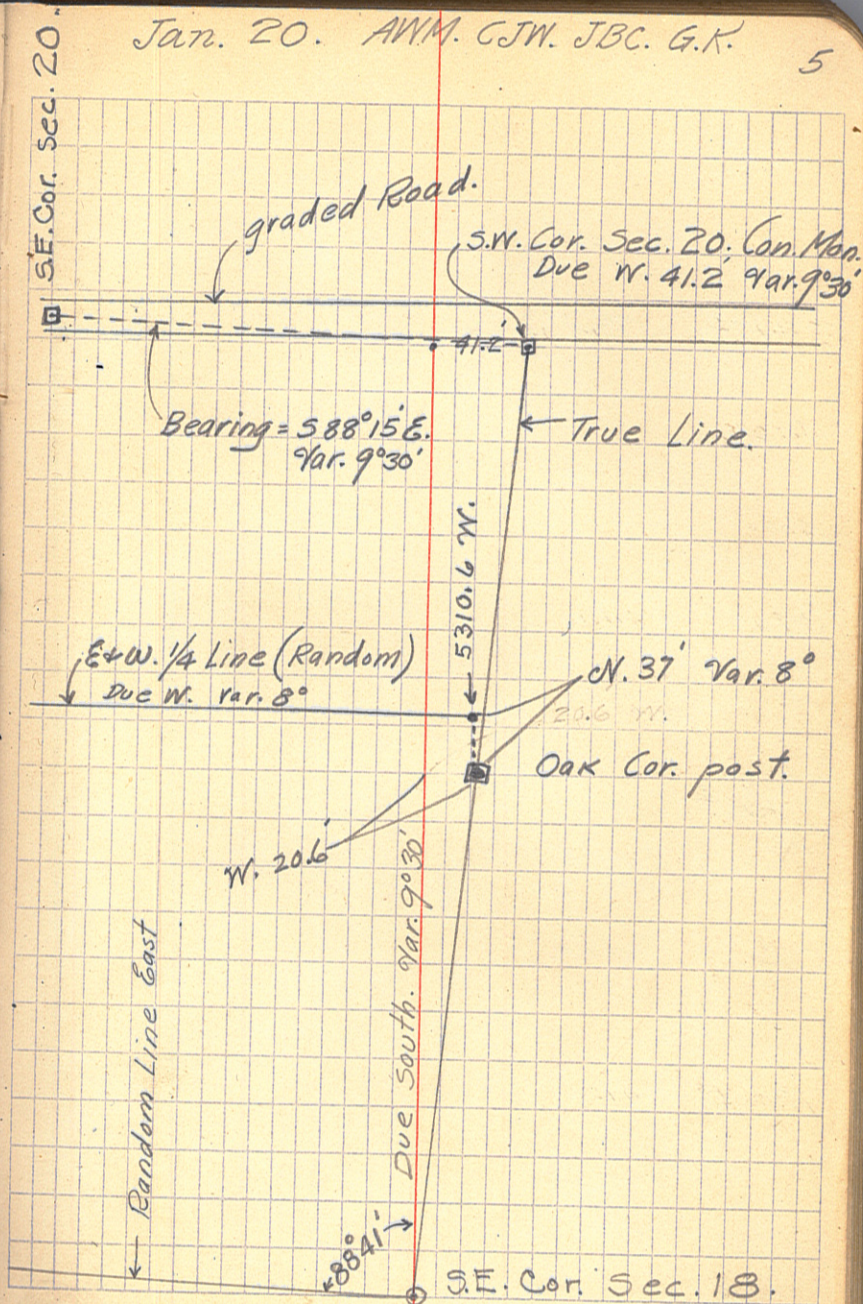
17708. Leave swamp.

1508.48. Hub. spike.

00

Jan. 20. AWM. CJW. JBC. G.K.

5



S Line Sec. 20 - 137-29
& Random Line

We locate $\frac{1}{4}$ cor. ^{$\frac{3}{4}$ Sec 20} quit for day

53+12¹ End of Line

5100

4500

4000

+75

3900 Spike

3700

156³

2600 Spike

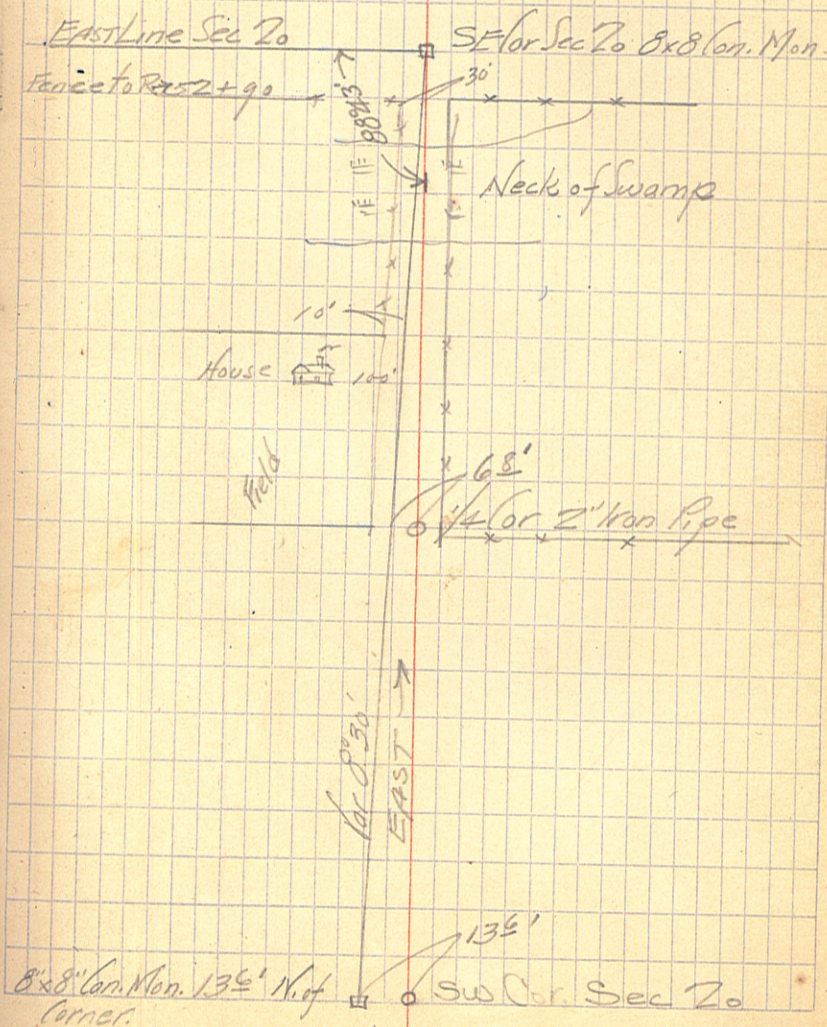
2200E Spike

1300E Spike

00

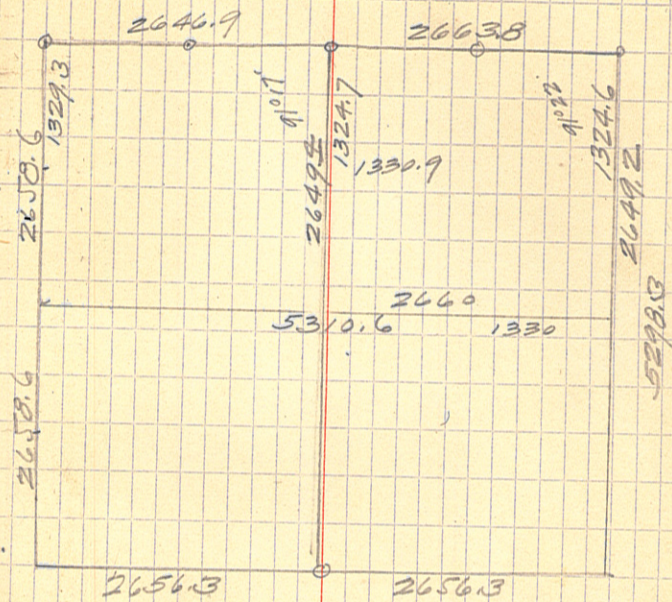
Wm JBC JK Jan 23

6



SECTION 20-137-29

7



H. & S. 1/4 Line Sec 20

28+50

26+645

26+077

⊙

Spike

9+50

8+825

7+30

⊙

Hub

00

J.K. - J.B.C. - A.W.M.

1-24-17

8

At 2660 W. Set center of Sec 15' N. (Oak Stake)

Lv. Swamp

X E & W 1/4 Line at 2667 1/2 W



Open Swamp

South for 900'

Lv. Isl.



Enter Poplar & Tag Alder Isl.



1/4 for Sec 20 - 137-29

East Line Sec. 18

26+48⁴

21+60

11+05

8

5

+30

○ POT Oak Hub

4

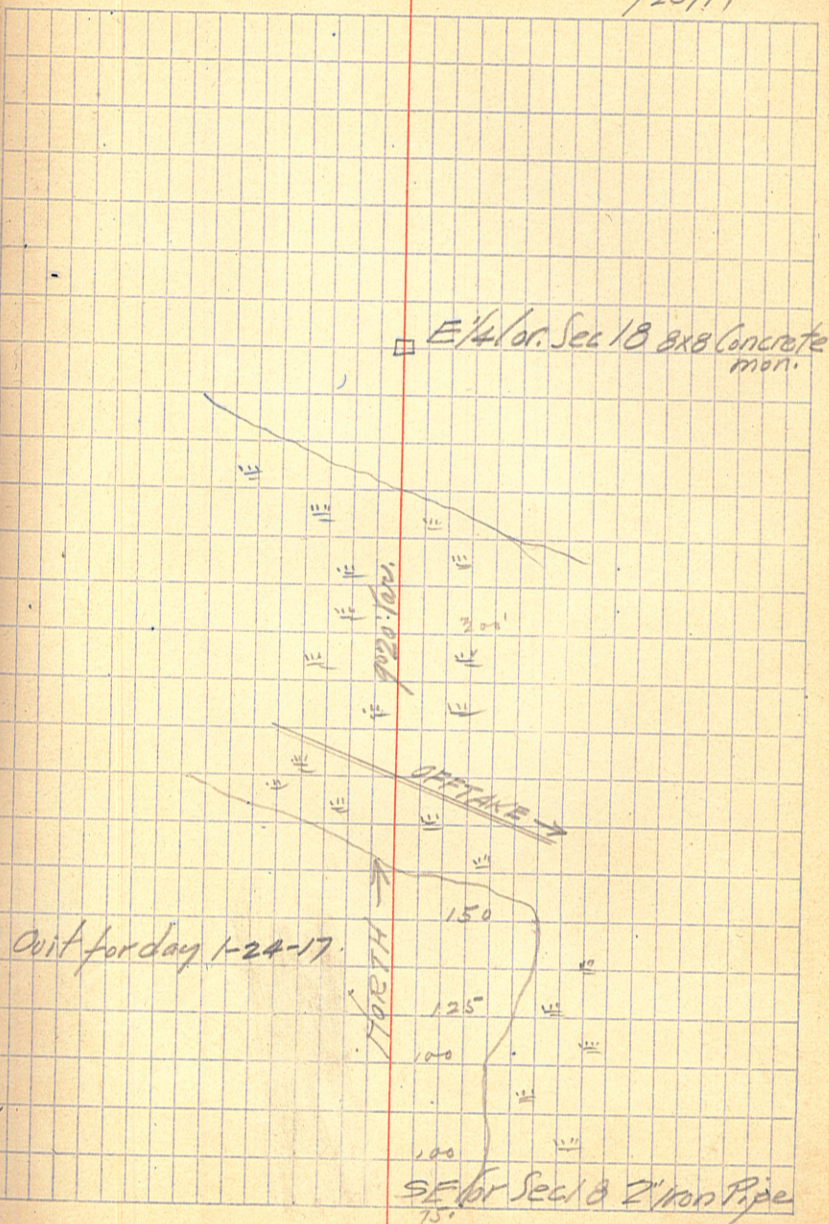
3

2

1

00

1/24/17 9
1/25/17



County Ditch No 9

- 23
- 22
- 21
- 20
- 19
- 18
- 17
- 16
- 15
- 14
- 13
- 12
- 11
- 10
- 9
- 8
- 7
- 6
- 5
- 4
- 3
- 2
- 1
- +13
- 00

JBC Max awm

1-25-17

10

Follows E OFFSTATE ditch of No 80 Road

SRH

East end 36" x 26' I.P.

W 1/4 Cor Sec 18-137-29

County Ditch No 9

47

46

45

44

43

42

41

40

+20⁹

Δ

46°08'R Spike

39

38

37

36

35

34

33

32

31

30

29

28

27

26

25

24

1/25/17 11

Follows E Offtake ditch of No 80

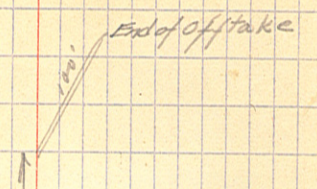
68
67
66
65
64
63
62
61
60
59
58
57
56
55
54
53
52
51
50
49
48

+22' Δ 3°15'R Spike

+25' Δ 6°37'R Spike

+70' Δ 19°12'R Spike

1/25/17. 12



X East Line Sec 18 at 1/4-381X.

Follows Offtake

89

88

87

86

85

+76 Δ 74°52'L

84

83

82

+057 \odot POT Spike

81

80

79

78

77

76

75

+47

74

73

72

71

+97³

70

69

New R + Awn

2/26/17

13

East on N. line

Intersect E-W 1/16 Line
of NW 1/4 Sec 20
0.512 E of 1/16 cor.

Quit for day 1-25-17

In line with N=80 Off take
from Sta

X N. Line Sec 20 at 3+24⁴E

+722 Δ -082

4

3

2

1

100

99

98

97

96

95

94

93

92

91

90

2" x 11" Fence Post
 R.P. 12' SE
 3" x 4" Fence Post
 108' SW

E. 1/4 Cor. of T. 14 N. 1/4 - 20

East on 1/4 line

LATERAL No 1

22

+013 Δ 34°16'L Spike

21

20

19

18

17

16

15

14

13

12

11

10

9

8

7

+517 Δ 15°28'R Spike

6

5

4

3

2

1

00

1-26-17

15

In line with #80 Offtake

Due West on the line
 NW 1/4 of NW 1/4 of 20
 W Line Sec 20
 = 84 + 76 on Main ditch

LATERAL No 1

1-26-17 16

23
22 + 35

Quit for day

Sets in offtake
End of Lateral No 1
End of offtake

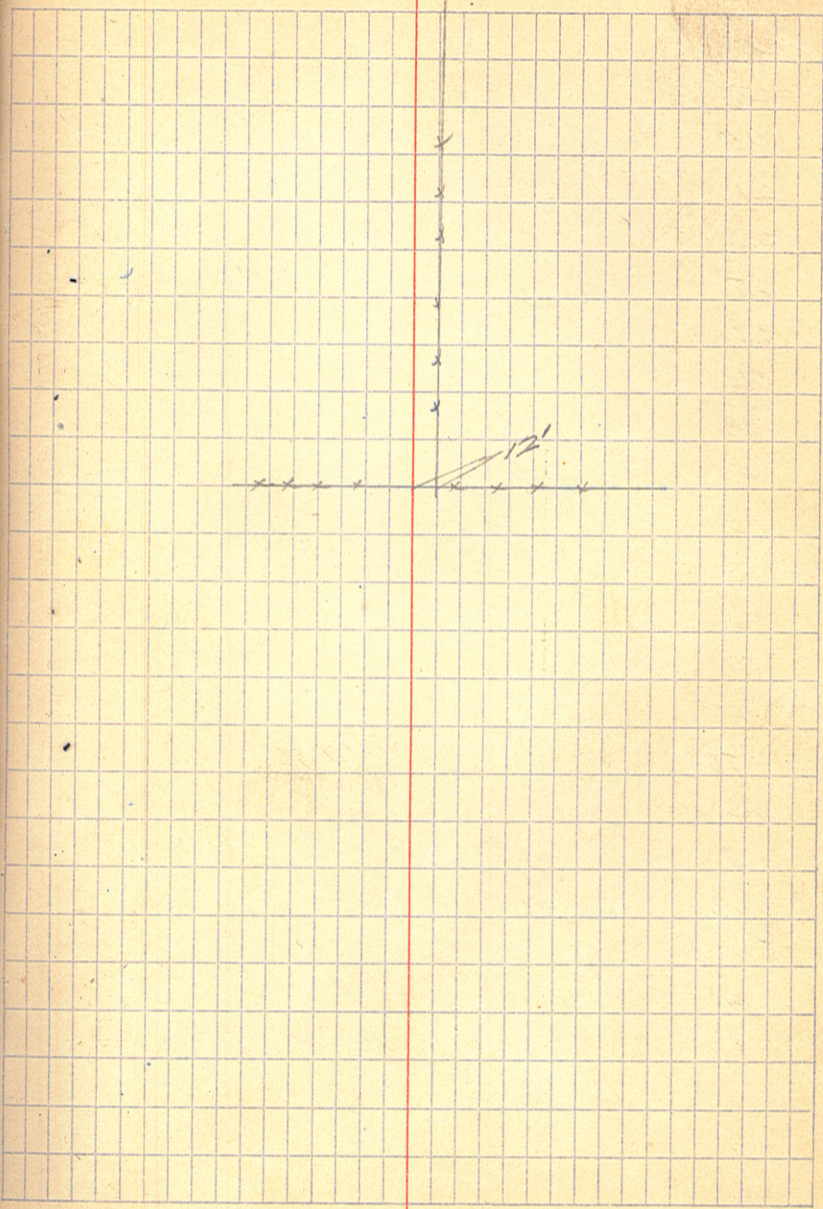
E COUNTY DITCH No 9

- 27
- 26
- 25
- 24
- 23
- 22
- 21
- 120
- 19
- +12
- 18
- 17
- 16
- 15
- 14
- +983
- 13
- 12
- 11
- 110
- 9
- 8
- 7
- 6
- 105

o spike

Geo Kline
13 Crossman
A. W. M. S.

1-27-17 17



49

48

+82

47

46

45

44

43

42

41

△ 60° 02' L spike

140

39

38

37

36

35

34

33

32

~ +15³

△ 88° 45' R spike

+10

31

130

29

128

E-W Fence Approx
1/4 line

R.P. Fence Post 4.5 W.

E of Ditch follows 20' W of Section Line

R.P. Fence Post 4.6 WEST

20' E to 1/16 Cor. being
E 1/16 of NE 1/4 of 20

x x x x x x x x

J.K.
J.B.C.
A.W.M.

1-29-17

19

72

71

+25

△ 37°02' Spike

70

69

68

67

66

65

64

63

62

61

60

59

+50

△ 67°42' Spike

58

57

○ Spike Pot

56

55

54

53

52

51

50

Quit for day 1-27-17

B.M.	1.73	1104.63		1102.90
T.P.	4.50	98.61	10.52	94.11
TP	4.95	98.63	4.88	93.73
TP	4.74	98.87	4.50	92.13
			6.51	92.36

Jac. Hawk. Cross.

1/31/17 20

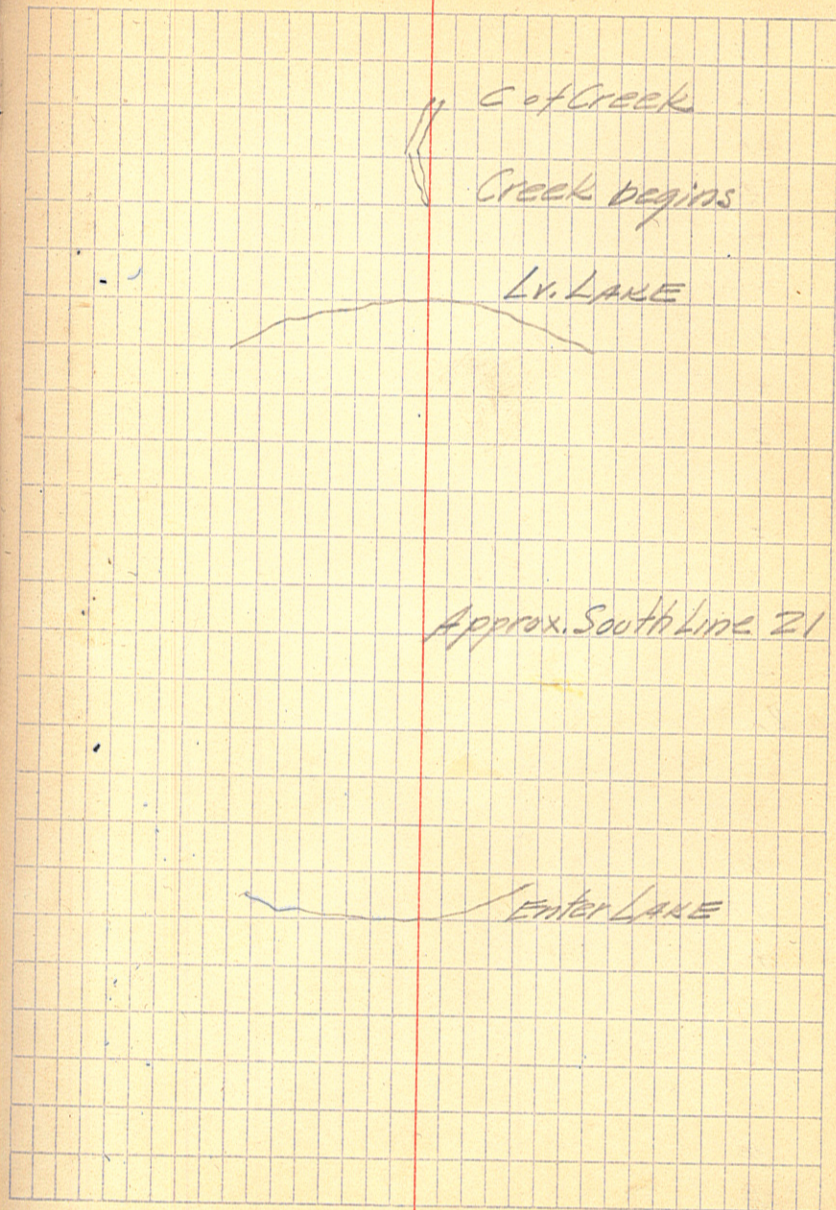
On SRH B.M

= Gov't. Fly. 128448

On East end Col. SRH

193
+85
+73² Δ 45°40' Spike
92
191
+50
190
89
88
87
86
85
84
83
82
81
80
79
78
+24² Δ 27°32' Spike
77
76
75
74
173

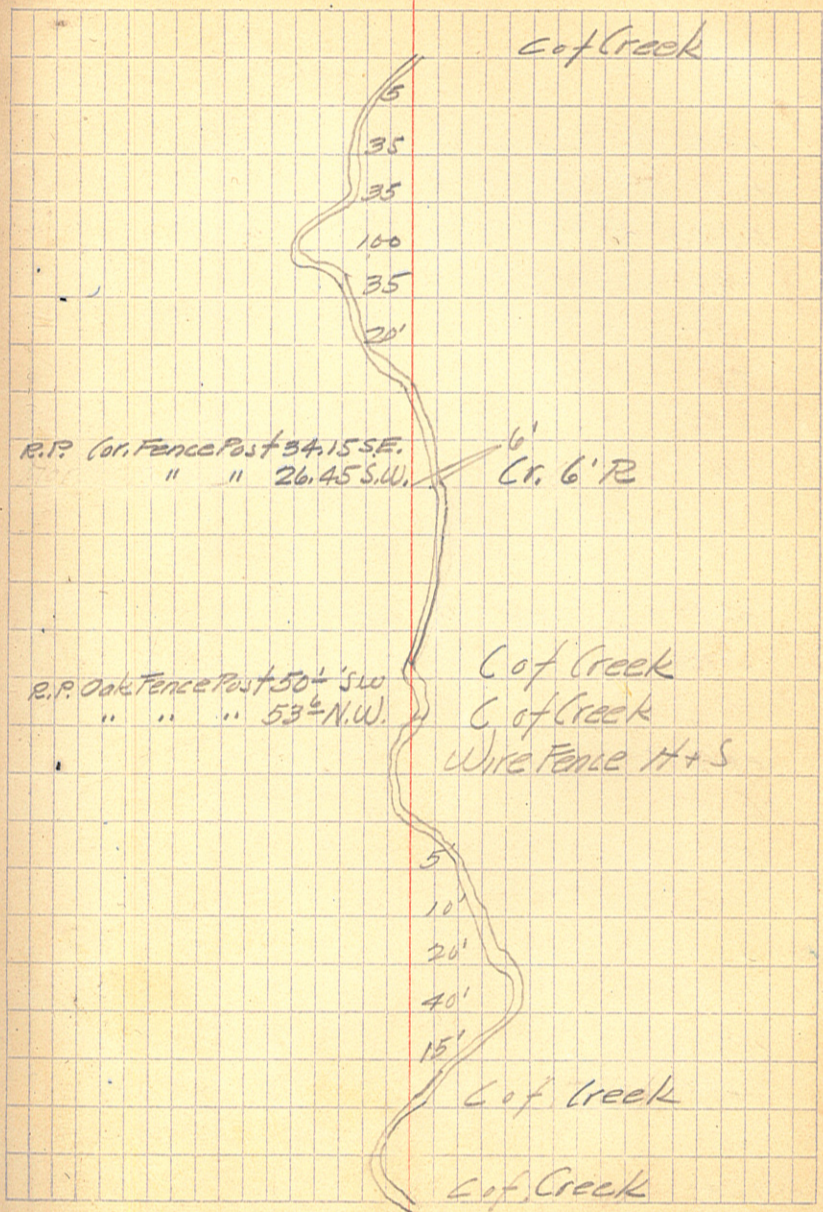
1-29-17 21



- 11
- 10
- 9
- 8
- 7
- 6
- 5
- +35
- 4
- +95
- 3
- 2
- 1
- +64
- 200
- +66
- +50
- 99
- 98
- 97
- 96
- 95
- +74
- 194
- +45

△ 23° 6' L Spike

△ 52° 43' R Spike

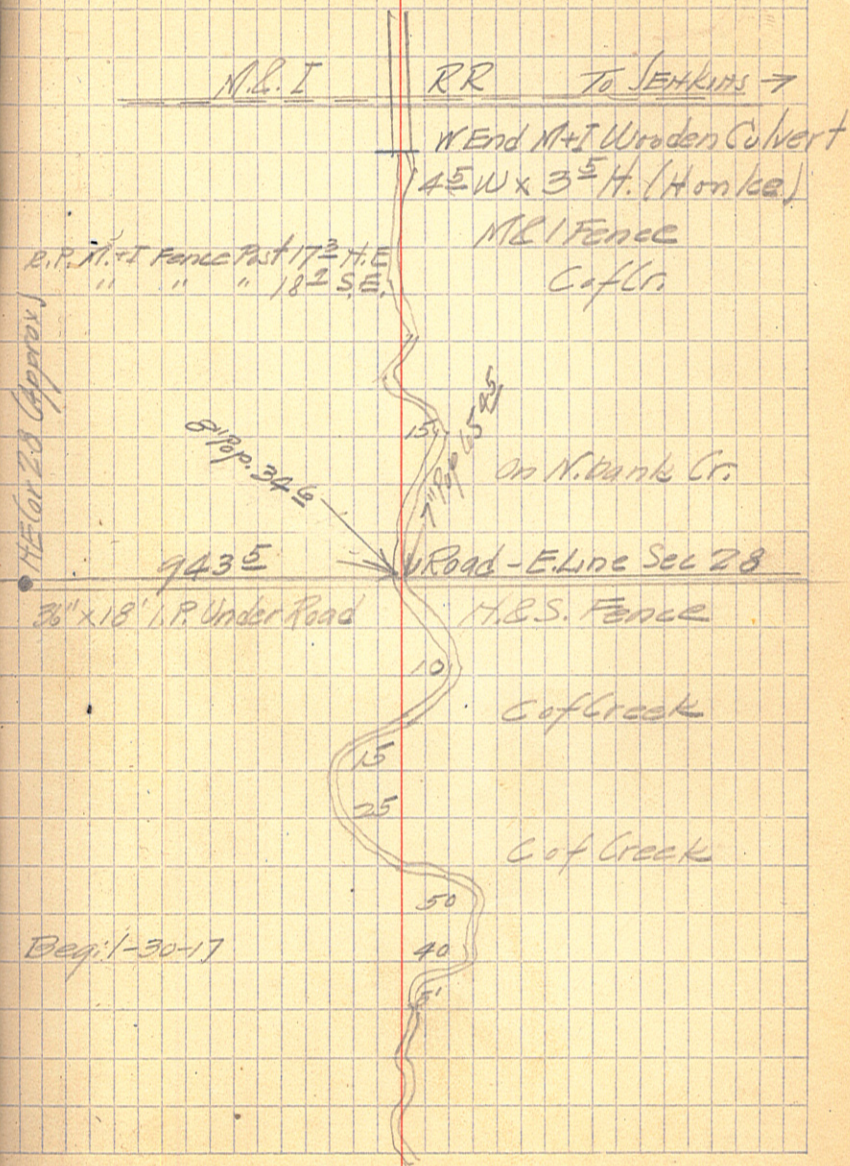


+43
 +31
 21
 +93
 +81 Δ
 20
 +85
 19
 18

 +57 Δ 6⁰⁰R Spike
 +17²
 17
 +49
 16
 15
 +86
 14
 13
 12
 +88
 +68
 211+38

G.K. - J.B.L. - A.W.M.

1-29-17
1-30-17 23



B.M.	420	1288.68		1284.48
+13				5.50 83.2
1				4.30 84.4
2				4.70 84.0
3				4.6 84.1
4				4.9 83.8
5				5.0 83.7
6				5.1 83.6
7				5.1 83.6
8				5.0 83.7
9				5.2 83.5
10				5.1 83.6
11				5.0 83.7
12				4.9 83.8
13				5.2 83.5
T.P.	240	88.47	261	86.07
14				4.9 83.6
15				5.0 83.5
16				5.0 83.5
17				5.2 83.3
18				5.2 83.3
19				5.3 83.2
20				5.6 82.9
21				5.7 82.8
22				5.7 82.8

On ice

Follows Old OFFTAKE No. 80

		128847			
23				5.7	82.8
24				5.9	82.6
25				5.9	82.6
26				5.9	82.6
27				6.1	82.4
T.P.	3.83	87.30	5.0		83.47
28				4.9	82.4
29				5.1	82.2
30				5.2	82.1
31				5.3	82.0
32				5.4	81.9
33				5.5	81.8
B.M.			1.56		1285.74
34				5.5	81.8
35				5.4	81.9
36				5.3	82.0
37				5.3	82.0
38				5.2	82.1
39				5.3	82.0
T.P.	3.66	86.95	4.01		83.29
40 ⁹				5.8	81.1
40				5.0	81.9
41				5.0	81.8
42				5.2	81.7
43				5.4	81.5

On 5' J.P. 300' L Sta 32
EIV

On Ice

1286.95

44				5.5	81.4
45				5.8	81.1
46				5.7	81.2
47				5.8	81.1
48				5.7	81.2
49				5.7	81.2
50				5.6	81.3
51				5.6	81.3
TP	3.40	85.80	4.55		82.40
52				4.4	81.4
53				4.6	81.2
54				4.7	81.1
470 ²				5.67	80.13
55				4.9	80.9
B.M.			3.11		1282.69
56				5.0	80.8
57				5.0	80.8
58				5.1	80.7
59				5.1	80.7
60				4.8	81.0
61				4.8	81.0
TP	4.12	84.45	5.47		80.33
62				3.8	80.7
63				3.8	80.7
64				4.0	80.5

2-12-17

26

On Ice
 On 3" Poplar
 30' R 55+60

= Ice Elev at 61 + 25'

		1284.45			
+222				4.4	80.1
65				4.1	80.4
66				4.6	79.9
67				4.8	79.7
68				4.7	79.8
69				4.7	79.8
70				4.9	79.6
71				4.9	79.6
72				4.9	79.6
TP	3.84	83.63	4.66		79.79
73				4.2	79.4
74				4.5	79.1
75				4.5	79.1
76				5.0	78.6
77				5.1	78.5
BM			1.17		1282.46
78				5.1	78.5
79				5.1	78.5
80				5.1	78.5
81				5.1	78.5
82				5.1	78.5
TP	3.08	83.11	3.60		80.03
83				4.6	78.5
84				4.7	78.4
+76				4.9	78.2

On loc

On 4" J.P. 150' L Sta 76

Main Ditch

2-12-17

28

B.M.	1283.11	1281.50	2.96	1280.15
85				3.1 78.4
86				3.2 78.3
87				4.1 77.4
88				4.7 76.8
89				4.8 76.7
90				5.2 76.3
91				5.2 76.3
92				5.3 76.2
93				5.4 76.1
94				5.4 76.1
95				5.3 76.2
TP	1.92	80.35	3.07	78.43
96				4.3 76.1
97				4.3 76.1
98				4.4 76.0
99				4.5 75.9
100				4.7 75.7
1				4.9 75.5
2				4.9 75.5
3				4.9 75.5
4				4.7 75.7
5				4.9 75.5
TP	2.84	79.28	3.91	76.44
6				3.9 75.4

On Snag - 50' R 84 + 76

LATERAL No 1

1283.11

1				4.6	78.5
2				4.5	78.6
3				4.0	79.1
4				4.2	78.9
5				4.0	79.1
6				3.5	79.6
TP	375	85.10	1.76		81.35
7				5.2	79.9
8				5.2	79.9
9				5.0	80.1
10				5.1	80.1
11				5.2	79.9
12				5.3	79.8
B.M. ↓ 13				5.0	80.1
14				4.8	80.3
15				4.9	80.2
16				4.8	80.3
17				4.6	80.5
18				4.6	80.5
19				4.4	80.7
20				4.5	80.6
21				4.8	80.9
22				3.7	81.4
23				3.5	81.6
			0.92		1284.18

2-12-17

29

00 = Sta 84 + 76 in Main Ditch E.V. 78.2

On Ice End -

OLD B.M. = 8408

On 8" Poplar 60' L Sta 13

127928

107				4.0	75.3
8				4.5	74.8
9				4.5	74.8
BM			2.46		1276.82
10				4.9	74.4
11				4.7	74.6
12				4.7	74.6
13				4.5	74.8
14				4.6	74.7
15				4.7	74.6
TP	2.47	78.98	2.77		76.51
16				4.5	74.5
17				4.4	74.6
18				4.6	74.4
19				4.8	74.2
20				4.8	74.2
21				4.8	74.2
22				4.8	74.2
23				4.9	74.1
24				4.8	74.2
25				4.8	74.2
T.P.	4.70	79.48	4.20		74.78
26				5.3	74.2
27				5.3	74.2
28				5.3	74.2

2/2/7

30

On 6" PORLAR 50' R. 109+50

		1279.48			
129				5.6	73.9
30				5.6	73.9
31				5.8	73.7
B.M.			2.85		1276.63
32				5.8	73.7
33				5.8	73.7
34				5.6	73.9
35				5.7	73.8
36				5.7	73.8
37				5.5	74.0
38				5.3	74.2
T.P	3.61	78.48	4.61		74.87
39				4.5	74.0
40				4.3	74.2
41				4.4	74.1
42				4.7	73.8
43				4.9	73.6
44				4.9	73.6
45				5.3	73.2
46				5.0	73.5
B.M.			2.79		1275.69
47				5.0	73.5
48				5.0	73.5
49				5.4	73.1
+20				5.75	72.73

2/17/17

31

On 5" POPLAR 200'L 131+15³

On Tel. Pole 60'R 146+80

On Ice

	127848				
150				4.9	73.6
T.P.	1.45	77.15	2.78		75.70
51				3.6	73.6
52				3.6	73.6
53				4.1	73.1
54				4.2	72.8
55				4.4	72.8
56				4.5	72.7
57				4.6	72.6
58				4.9	72.25
+ 50				4.8	72.4
59				4.8	72.4
60				4.4	72.8
61				4.6	72.6
62				4.4	72.8
63				4.7	72.5
64				4.8	72.4
65				5.0	72.2
T.P.	2.90	76.85	3.20		73.95
66				4.9	72.0
67				4.6	72.3
68				4.8	72.1
69				4.3	72.6
70				4.9	72.0
+ 25				5.5	71.4

7/2/17

32

2-12-17
2-13-17

1276.85

171				5.2	71.7
72				5.2	71.7
73				5.7	71.2
74				5.6	71.3
75				6.1	70.8
T.P.	4.02	76.62	4.25		72.60
B.M.			0.84		1275.78
	2.20	74.80			72.60
76				4.30	70.5
77				4.6	70.2
78				4.6	70.2
79				4.6	70.2
80				4.9	69.9
81				4.89	69.91
82					
83					
84					
85					
86					
87					
88				4.66	70.14
TP	6.94	77.08	4.66		70.14
89					
90				6.9	70.2
91				7.2	69.9

Out for day - 2-12-17 On 5' Pap 250'R 175

Dep. 2-13-17

On Ice

Ice E/W of Lake

127708

192				4.4	72.7
+65				7.3	69.8
+73 ³				4.8	72.3
93				4.4	72.7
94				4.8	72.3
+74				7.3	69.8
95				4.6	72.5
96				4.0	73.1
97				4.6	72.5
98				4.9	72.2
TP	3.91	77.34	3.65		73.43
99				5.7	71.6
+50				7.5	69.8
200				5.7	71.6
+64				7.4	69.9
1				7.1	70.2
2				5.7	71.6
3				6.9	70.4
+30				7.2	70.1
+65				4.8	72.5
+95				4.8	72.5
4				5.0	72.3
+40				7.9	69.4
5				5.9	71.4
6				6.3	71.0

low. Kline
+3 Cross man
low

2-13-17

34

Creek - 1cc

Creek

Creek

Creek

Creek

2/13/17

35

		1277.34			
207				5.1	72.2
8				6.3	71.0
TP	2.84	75.43	4.75		72.59
9				5.0	70.4
10				5.9	69.5
+50				3.9	71.5
11				6.4	69.0
+38				6.45	68.98
+68				6.5	68.9
+88				6.5	68.9
12				5.6	69.8
Bm			3.83		1271.60
13				4.3	71.1
14				4.5	70.9
+86.5				7.4	68.0
15				4.5	70.9
16				5.3	70.1
+49				7.8	67.6
17				5.7	69.7
T.P	3.21	74.16	4.48		70.95
				6.7	67.5
18				4.6	69.6
19				5.2	69.0
+85				6.9	67.3
20				6.4	67.8

Creek

"

"

"

On 12" P.P. 5' L 21+90

=Elv. of Road

Ice End Culvert

Creek

220+81
BM

1274.16

7.1

67.06

3.67

1270.49

7/2/17

36

-Creek to - Edge RR Row
On 12" IP 25' R 218+75

SOUNDINGS - LAKE

181	2.0	Ice	6" or more Mud
183	2.5	Ice + Water	6" " "
185	3.5	" + "	2.5' — "
187	3.0	" + "	6" or more Mud
189	2.5	Ice	6" " "

Approx Center of Lake } Sounding
 2 1/2' Ice - Deep Mud.

FLY LEVELS

T.P.	5.96	78.21	72.25
			4.7 73.5
			4.8 73.4
<hr/>			
T.P.	4.17	79.82	75.65
			4.7 75.1
<hr/>			
T.P.	4.21	79.81	75.60
			5.0 74.8
			4.8 75.0

Elev Sta 158
 Elev. SE or SW 1/4 SW 1/4 Sec. 21
 = 700' N of above Pt

= Elev. Sta 104
 Elev. Center Sec 20

= Elev. Sta 104 + 72 3/4
 " N 1/4 Cor Sec 20
 " 300' W N 1/4 Cor - 20

2/13/17

27

2/13/17

38

Old Snags on Main Ditch
Sta 79-89

Old Snags on Lateral No 1
Sta 00 (Sta 84+76 Main Ditch)
to Sta. 9

ALL Distances Taken from Random Line

10+90.7 C Line of Ditch 20' south of sec line

True course of N Line of sec 13 $N 00^{\circ} 27' W$.

True distance 5320.8 FT.

Distances
North to true Line

53+21 ⁰	NW corner of sec 13	42.1
44+88	NBS Fence	35.51
42+00	Husk 26' 6" of Random	33.23
41+68 ⁰	Hub Fence 19' R. E. W. Fence	33.00
40+16 ⁰	Hub in pig yard	31.87
38+00 ⁰	N & S Fence. Fence Cor 15' R.	
35+41 ⁷	Hub	28.05
30+96 ⁸	Hub	24.50
26+60 ⁵	1/4 cor	21.05
26+40 ⁰	No trace of 1/4 corner	
24+56 ⁷	Hub	19.94
13+73 ⁷	Hub	10.87
10+90 ⁷	Hub	8.72
7+58 ⁹	Hub	5.99
00		

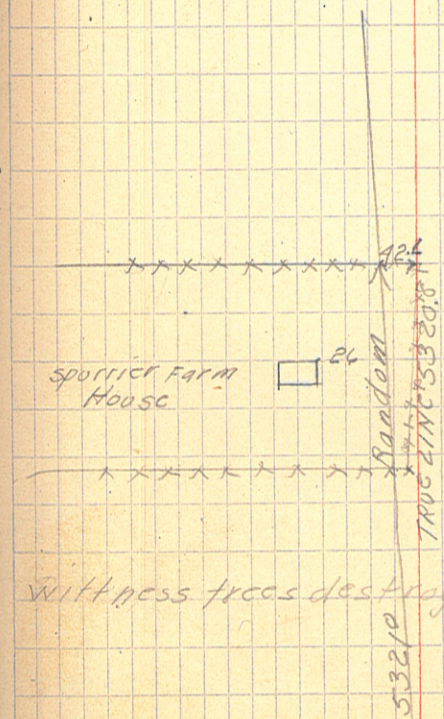
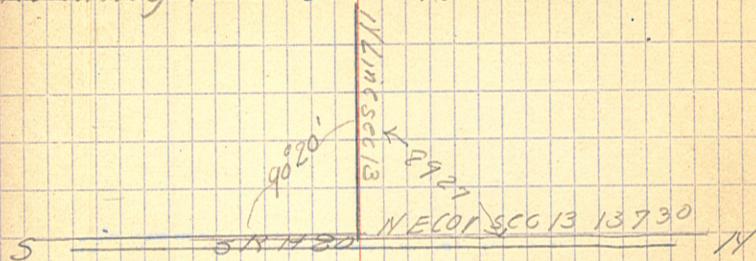
J. Pomasek Esqr. July 9 1917

W Stark weather road

39

Random line of N Line sec 13 13730

Running west on $8^{\circ} 45'$ variation



Witness trees destroyed

NE COR SEC 13, 137-30 center of SRH80

Trace 539
E
Trace 79
58² o tree W
N 71⁰ Tree destroyed

LAT No 2 of Co No 9
8° 00' VARIATION

20

19

18

17

16

15

14

13

12

11+30

10

9

8

7

6

5

466° - 489° 25' R N 00 46' W 466

4

3

2

1

+31

0+13³

W end of culvert

0+00 588° 49' W

00+00 of LAT No 2 = PO of Main ditch No 9

J.F.P. July 12 1917
W.S.
H.C.

40

466

2 WIDE END N.W.

588 H 30

C LINE

N.E. S TANCE XXXXX 75

466

starting at W 1/4 Cor 5 CC 18, 137.29 center 5 RT 50

Continued on page 43

38+84.5 $\Delta 67^{\circ}30'R$ 58938 N 246.8

38+64.5 = sta 11+70.2 on sec Line 2

38

37

36+37.7 $\Delta 88^{\circ}10' L$ $\Delta 22^{\circ}08' W$ 58940 W 273.2

36

35

34

33+64.7 $\Delta 25^{\circ}10' L$ 116942 W 510.7

33

32+10.0 I.P. of sec Line 356

32

31

30

29

28+54.0 $\Delta 73^{\circ}46' L$ $\Delta 14^{\circ}32' W$ 2388.0

28

27

26

25

24

23

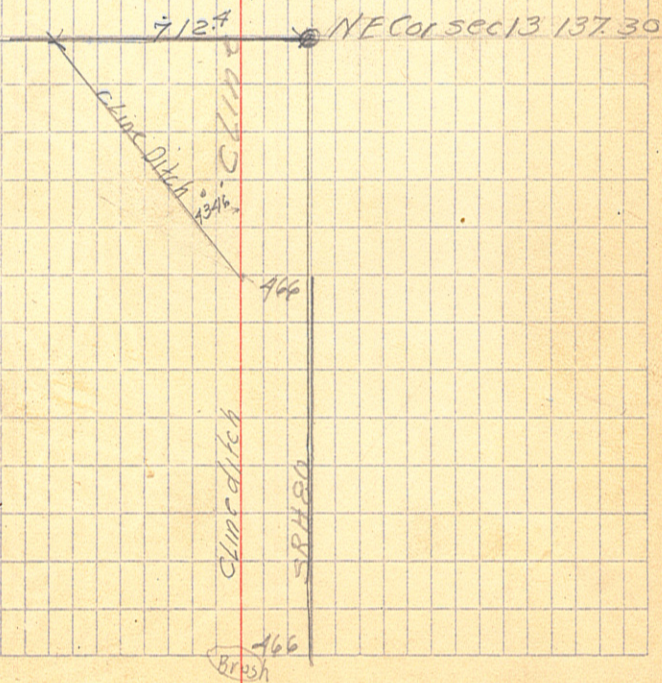
22

21+00 Pot

same as on
July 12 1917

Lat No 2 of Co Ditch No 9 41

Angle = 20' south of sec line ditch line
Cross N Line sec 13. Cliner of Ditch 20' south of sec line



July 12 1917

92

Levels on N Line of sec

13 using sec line stations

For possible change of line
on sec line instead of following

Drawn

Sta	BS	HI	FS	Elev
BM.	4.47	106.67		10000 assumed
7+12.9			7.5	99.2
7+59			6.8	99.9
8			6.0	100.7
9			4.8	101.9
10			4.9	101.8
11			6.3	100.4
+40			7.0	99.7
+70			6.7	100.0
12			6.7	100.0

continued from page 41

60
59
58+11.5 POT
58
57
56
55
54
53
52
51+71.8 POT 58938W
51
50
49
48
47
46
45
44
43
42
41
40
39

Lat No 2

6730

43

July 18 1917.

20

Calmer ditch

2017938

20

75+31.0	A00°17' L	S88°34' W	413.6
75			
74			
73			
72			
71+17.7	A17°07' R	S88°51' W	98.9
71			
70+21.0			
70+18.5	A5°55' R	S81°44' W	73.2
70			
69+45.3	A21°27' R	S75°49' W	89.0
69			
68+56.3	A13°30' R	S54°22' W	193.3 ✓
68			
67			
66+63.0	A59°16' R	S40°52' W ✓	136 ✓
66			
65+27.0	A64°41' L	S18°24' E ✓	98.5
65			
64+28.5	A17°49' L	S46°17' W ✓	275.1 ✓
64			
63			
62			
61+53.7	A25°33' L	S64°06' W	2268.9
61		S89°38' W	

July 18 1917. DAT No 2

14

in ditch

in ditch

N 2 S. F. P. C. 3 W. 1 K. C. X X X X X X X X X X
in ditch

in ditch

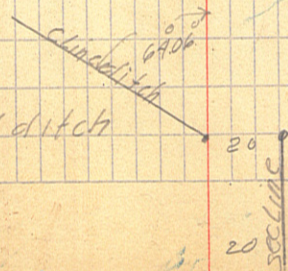
in ditch

" " " 14' R.

center of ditch 8.5' left

center of ditch 1 1/2' left

Follow old ditch



97703! A0019R S1°36'E 13462

97

96

95

94

93

92

91+78⁵ O.POT

S1°55'E

91755

8186

91

90

89

88

87

86

85

84

83756.9 A 90°29' L S1°55'E Δ 90°19' L WILL

83

8259

parallel the fence,
line, which is 2 FT NCS

82

From s to 83756.9 to end of ditch

81

changed line to 20' west of true

80

sec line west line sec 13, Apr 21/19

79

78

58834' N

77

76

L A + No 2 of Co Ditch No 9

Changed to 20' west of true
sec line west side sec 13.

July 13/1917. same crew

75

INDITCH

INDITCH

E 3/4 W 1/2 fence

INDITCH

SEC 13

SEC 14

SEC COR

SEC 13

NW COR SEC 13

Fence cor.

NW

