

5
WALKER REMER RICH

LAND TIES AND

ALIGNMENT NOTES

1921

FIELD BOOK

361

442 to 705

105

105

693 + 030
 679 + 475
 3 - 55.5

9
 307
 27 63 47
 776.3 9
 240 473
 A = 36 -
 42
 3054

INDEX

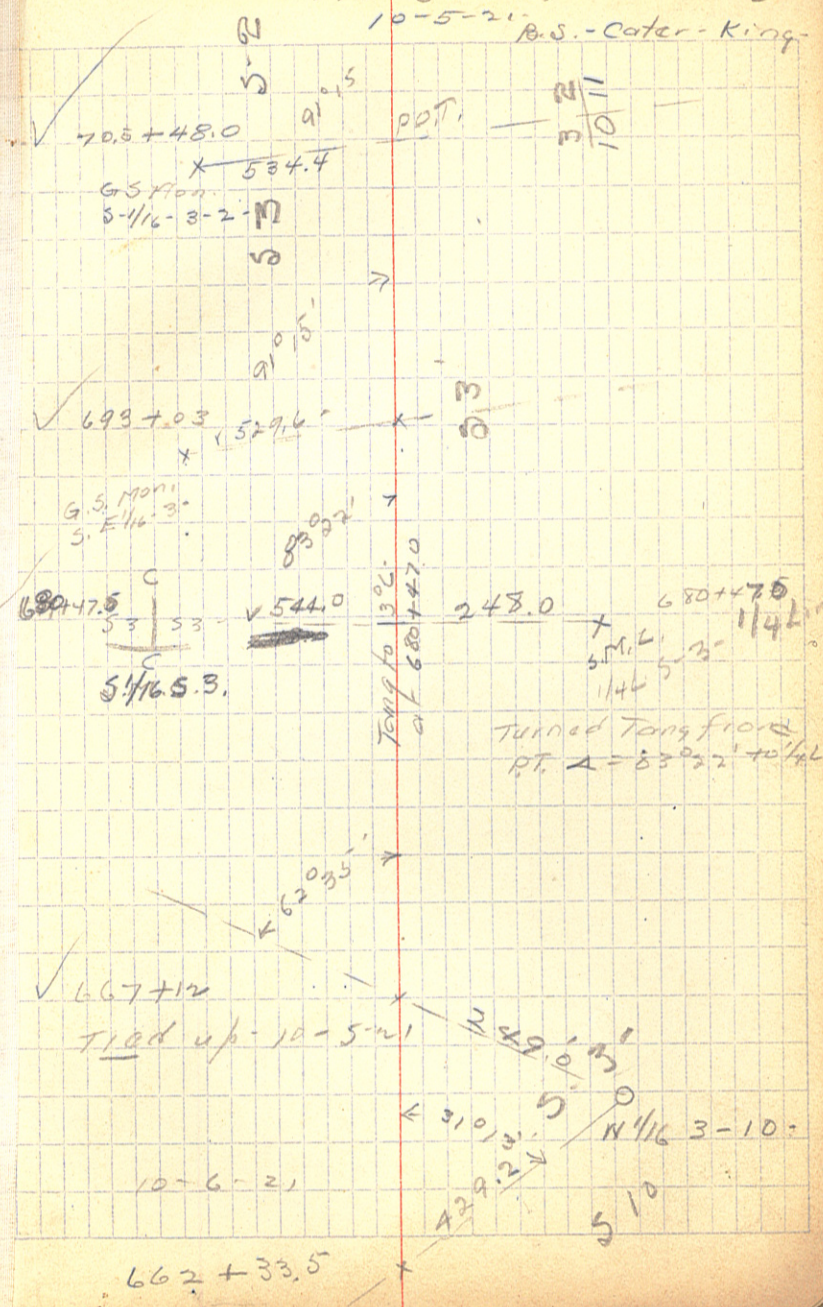
- Page
 0 - 5 Land Ties
 6 - X sec. 546 - 535
 8 - Alignment Notes

8926
 1-50 W
 6235
 5410
 8.25 W
 5734
 113
 55.23

Land Tie Survey -

6

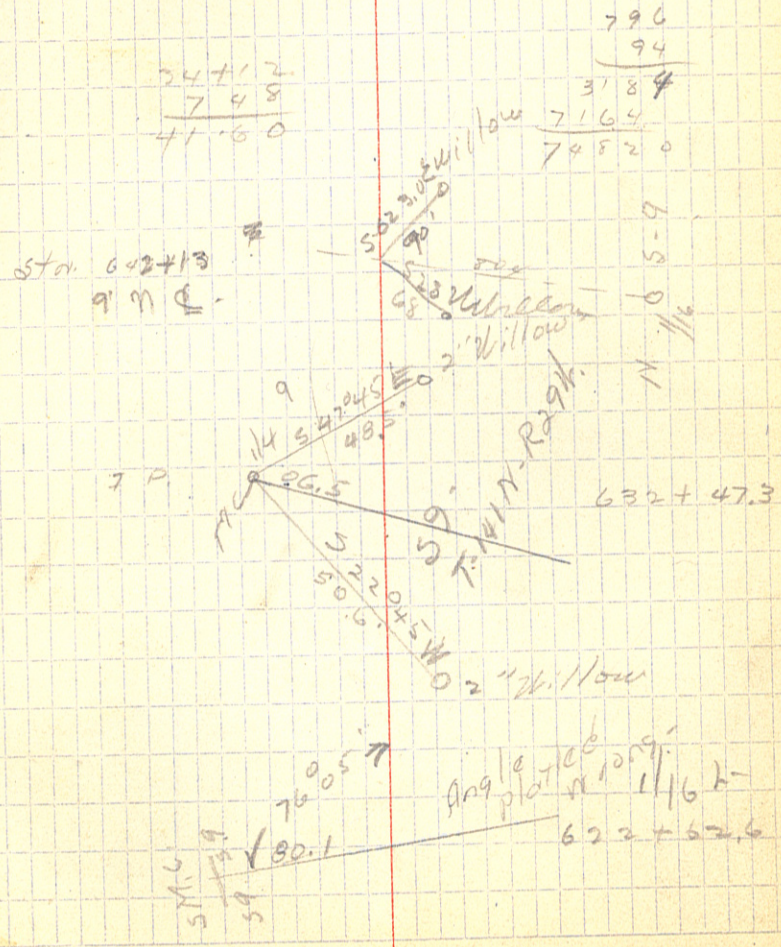
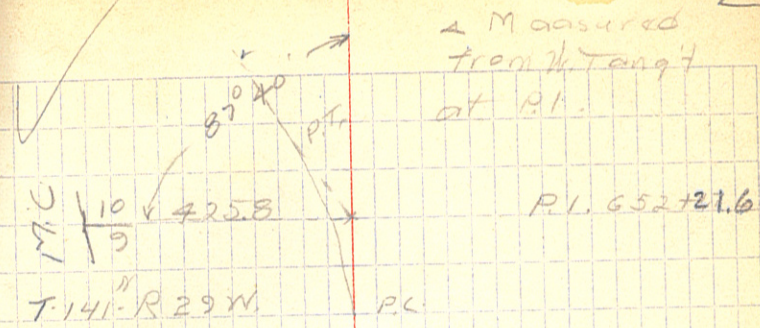
10-5-21 B.S. - Cater - King



5844	50.	1/4 cov	4412
			2441
5737		1/6 "	165
567		1/10 cov	5242
630-	631		4747
			845
			4747
			2441
			965

652+72	S° 83° 40'	W-	
663+77	17	S 70° W-	844
1634+12	S	81° W-	
1622+47	S	76 W	4412
	845	844	2447
	965	912	165
	165	163	163
		1919	920
		959-	163
		4	757

9994	94:	1: 7996-
54		
47970		
39970		
79957		
8443450		
9455		
965		
47275		
56730		
8509575		
9124075		
9877		796: x 94
165		
49385		
54262		
9977		94
1629705		



Sta 549 + 02.7 1/16 L.N.

66) 51.4 (77.88
46.2
52.0
46.2
55.5

Sta 535 + 15.3

1/4 cor.

439 (66.52 oak 389 oak 25.7 (3894
396
164.9
5.12
19.8
59.0
64.8
62.4
2.6

Sta 522 + 15.6

430
396
34.0
33.8
37.0

Sta 509 +

80.6 (121.97

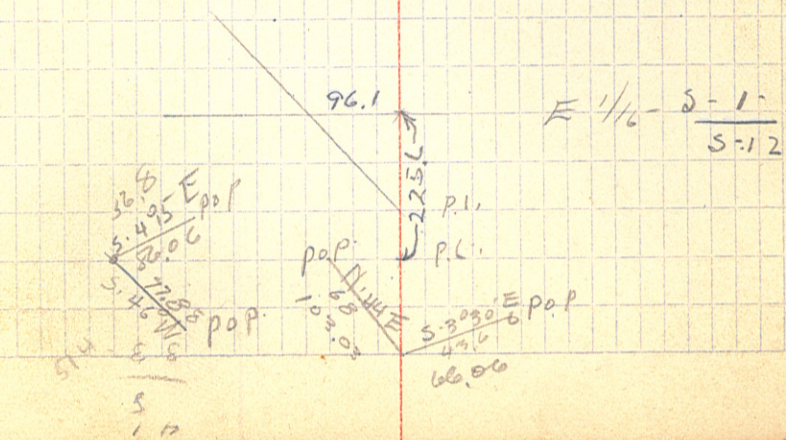
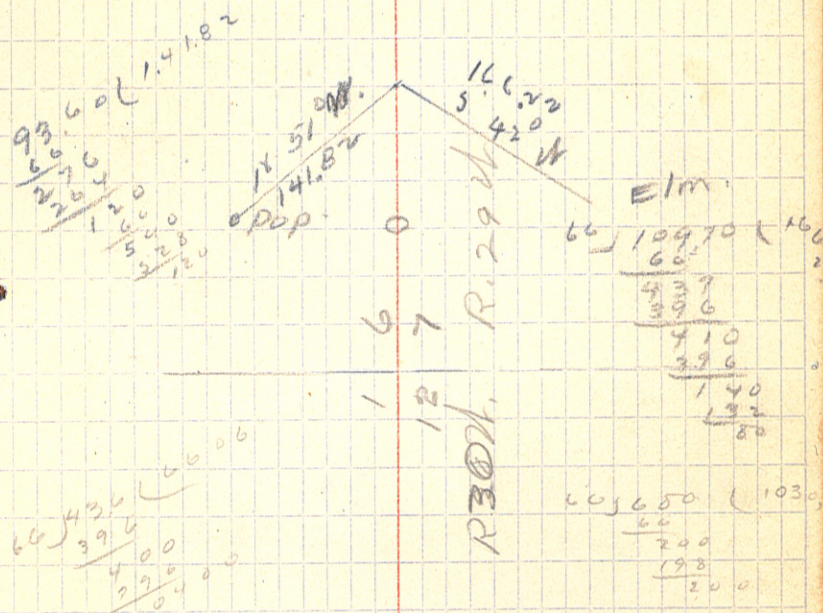
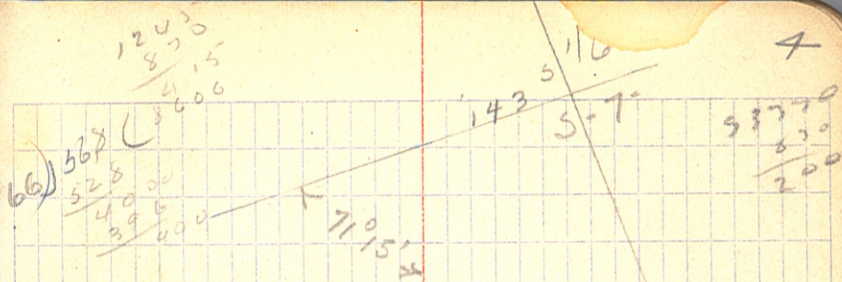
66
145
132
13.0
6.0
6.0
6.0
39.4
46.0

5880 (39.09 Elm
528
6.00
59.4
60

Sta 495 + 05.0 = N 1/16 L

Sta 488 + 15.3 TR 1278 A Not cor
A.P.1 - T.A.P.2

Sta 481 + 41.5 TR 1657 1/4 cor
1321
S-12



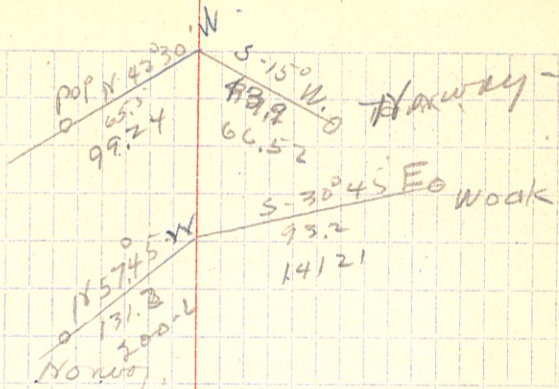
Sta 467 + 945

Sta 455 . 49

1166

6615
830
5740

5



66) 318 2

66) 932 (141.21

66

272

264

80

20

140

2720

66) 655 (99.24

594

610

594

1600

132

280

260

66) 4790 (665

396

430

396

340

230

100

1151

800

4270

53915

850

70.4