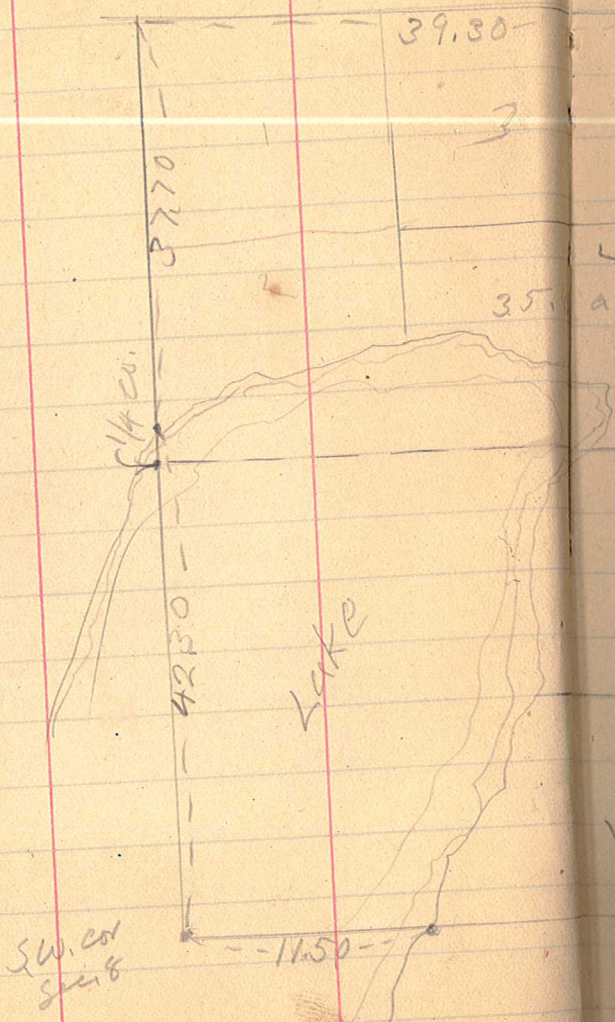


6
1-1-50
2-2-50
3-3-50
4-4-50
5-5-50
6-6-50
7-7-50
8-8-50
9-9-50
10-10-50

Scanned by the CCSO



Curo Fld Bk 13.5

17.60
4.20
6



LOT 4
a.

131350

LOT 5
23.409

LOT 7
46.10

LOT 6
19.454

Baby Lake

114.00

LOT 8
45.650

28.50

1.5

30.50.50 4.52

8.00

52.00
see 8.

Curo Fld Bk 13.5

8 ✓

August 1918

Survey of Gov. lots 4-5-6-7 and 8
Sec. 8 T. 140 R. 20 W. Cass Co.

Beg. at. $\frac{1}{4}$ post betw. Sec. 8-17
running west.

Sta. 0.

+65

1

+36.1

2

+50

3

+25

Tack on Log.

4 Curo Fld Bk 13.5



8

17

- 1/4 post.
- bot. hill

• Top hill

• Cent. depn

• bot. hill

+ 87.4 Lub.

6

7

8

+ 54.75 Lub.

9

+ 70

10

+ 98.75 Lub.

11

12

13

14

15

+ 85.75

16

17

+ 40

18

+ 37

760
9470
85470

✓

Top hill. highest

hub.

bot. depr.

top hill

depr.

hub. top hill

bot. hill

Curo Flo Bk 13.5

hub. at Kid Lake

18+44.

We found a shortage of 12 ft.
to H



Water edge

ft.

Cass County

Running West on North
line of sec. 8 - 140-29 W.

Set transit on M.C.
50.20 chains East of N.W. cor
of sec 8 as per Gov. Survey.
turned angle of $90^{\circ}40'$ West
from true North and found
both B.T.s for M.C. at
39.50 chains E. of N.W. cor.
sec. 8. Set 12⁰ inch post for
M.C. thence run West
on line over above mentioned
M.C. posts.

at Sta. 9+68.1 from M.C.
marked hub for correction of
random.

Run 2593.8 ft. to Sec. cor. of
5-6-7 and 8 but found nothing
of bearing trees.

✓
 Then run south Va. $8^{\circ}40'$
 at a angle of $90^{\circ}28'$ to N. line
 sec. 8. to Kid lake. could not
 find Bearing trees or m.c.
 measure this line and fit
 lake shore by using Gov. dist.
 of 2488.2.

at 1273.8 ft. West of M.C.,
 found on N. line of sec. 8
 2593.8 ft East of N.W. cor thereof,
 set cor. for line betw. Gov.
 lots 1+3. Turned angle of
 $90^{\circ}28'$ So. Va. 9° .

At Sta. 13+20 set N.W. cor.
 Gov. lot 4. thence continued
 So. to Kid lake, set M.C.
 at Sta. 6+43.5

at Sta. 13+20. Turned east $89^{\circ}32'$

Curo Fid Bk 13.5

from N. for north line
of Gov. lot 4. set. M.C.
at Sta. 10712 on Baby Lake

Meander line on
West shore of Baby Lake.
Sta. 0 at N.E. cor. gov

- 1
- 2
- 3
- +50
- 4
- 5
- +796
- 6.
- 7
- +225

Set. Lam. post.

Set. Lam. hub.

line
C
on
lake
con.

gov. lot 4

Sat Ash trees.

M. LINE

N. LINE 1074
10940'

Point "E"

Baby lake.

520° S.
50.
20.

Point "F"

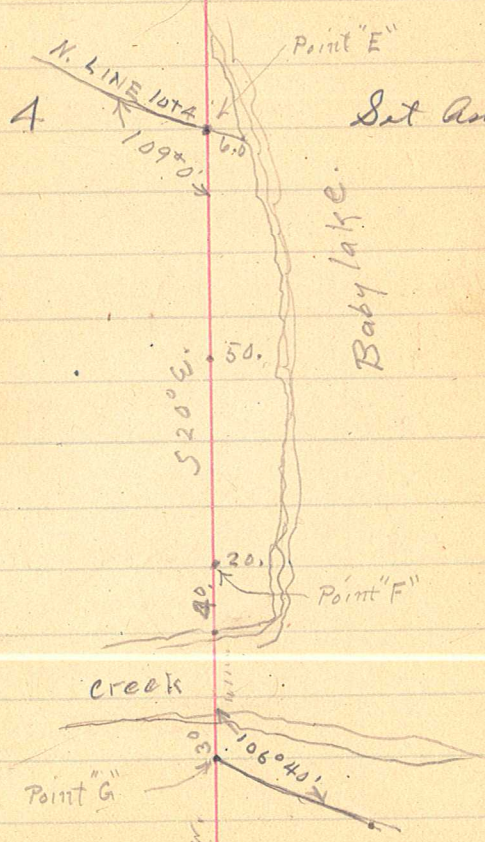
creek

Point "G"

Low
2094'

10640'

Curo Fld Bk 13.5



7+22.5

line going east

1

2

3

4

5

6

7

8

+58

9

10

11

+51.8

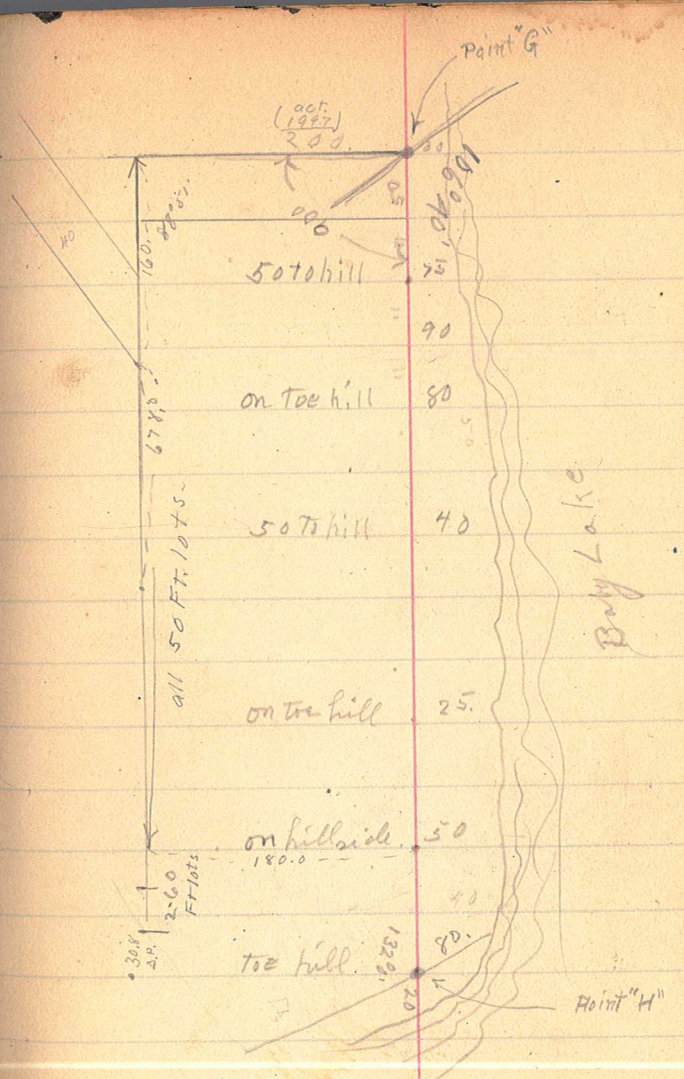
Set M.C.

0.88888
247.401
167.20

10000
20000
30000
40000
50000
60000
70000
80000
90000
100000

1588
100
2463

East



$$\begin{array}{r} 179.60 \\ 106.40 \\ \hline 73.20 \end{array}$$

$$\begin{array}{r} 89.60 \\ 73.20 \\ \hline 16.40 \end{array}$$

0.01 500
 0.01 500
 0.01 500

20

11 + 51.8

0 + 50

" 1

+ 903

time going So. Ely.

Set m. l.

3.40.60 / 60 / 30.45

Sly.

2.403.60
2.404.40
60
30.4R

50 To hill

toe of hill

1870'

80.

20

30

40

1080'

10.

Point "H"

Point "I"

✓ 21

22 ✓

Sta. 4997

line going SW.

1

2

3

4

5

+50

6

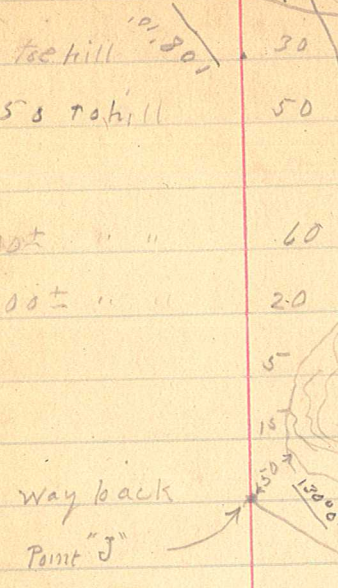
+50

m e.

Sw.

M.C.

7-60
2-60
2-60
7-50
FRONT
1-10
1-10



$$\begin{array}{r}
 650 \\
 260 \\
 \hline
 390
 \end{array}$$

$$\begin{array}{r}
 60 \\
 4 \\
 \hline
 20 \\
 \hline
 24
 \end{array}$$

3

$$\begin{array}{r}
 31 \\
 \hline
 6 \overline{) 190} \\
 \underline{12} \\
 70
 \end{array}$$

24

✓

Sta 64.50

1

+50

2

+50

3

+50

+89.1

line going So

low wayback

" " "

" " "

" " "

Point "J"

✓ 20

25
130
100

20

10

20
120

30

10

Point "K"

26



Sta 3+89.1

+50

1

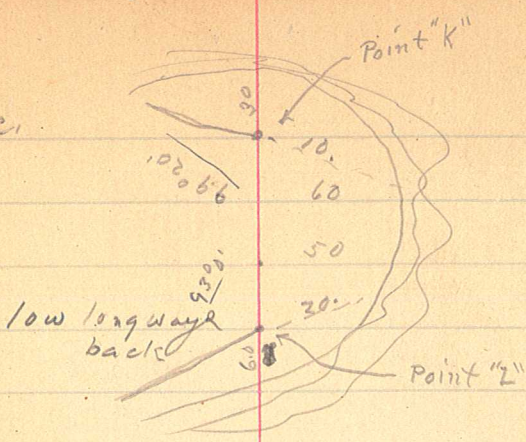
+50

+67.4

line going W

M.C.

me



28

+41

M.O.

3

+50

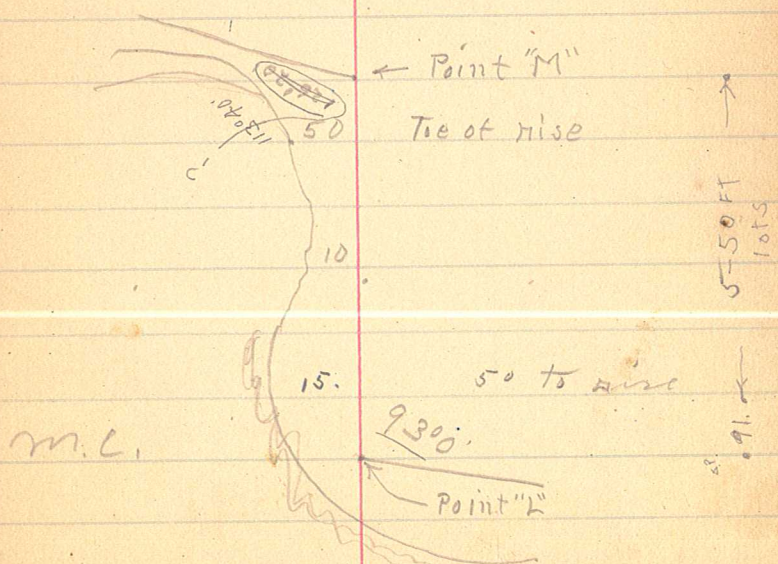
2

+50

1

Sta 1+67.4 line going n.

12



Curo Fld Bk 13.5

Sta 3+41

line going W.

+50

1

+50

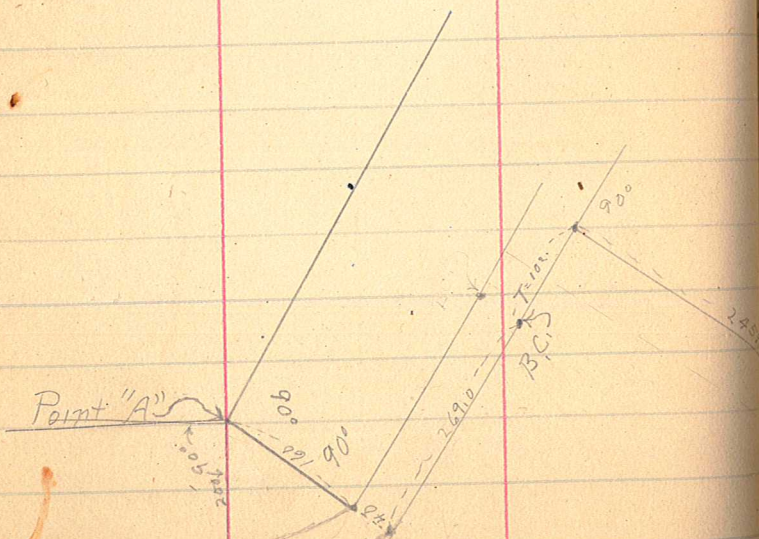
2

+50

3

+18.7

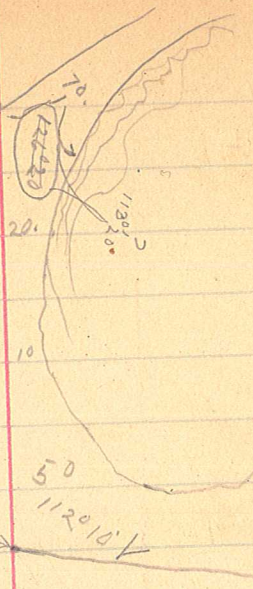
M.C.



at
6-50 Ft. lots
changed
at 187

M.C. Point M's

at top of hill



6-50 Ft. lots

changed

|| || || ||

See page 74 For Location of Road.



Curo Fid Bk 13.5

32

3 + 18.7

line going Swby

1
+ 50

2
+ 50

3
+ 94.5

M.C.

Point "A"

20

30

60

10

50

153° 40'

50

70

Flat.

20

Point "N"

05

34

3+945

1

+50

2

+50

3

110.1

line going W

M.C.

Mc.

Flat.

1320.5

15

Point "N"

35

11

40

50

60

1320.

Point "O"

25

36



3+10!

King's Navy

1

2

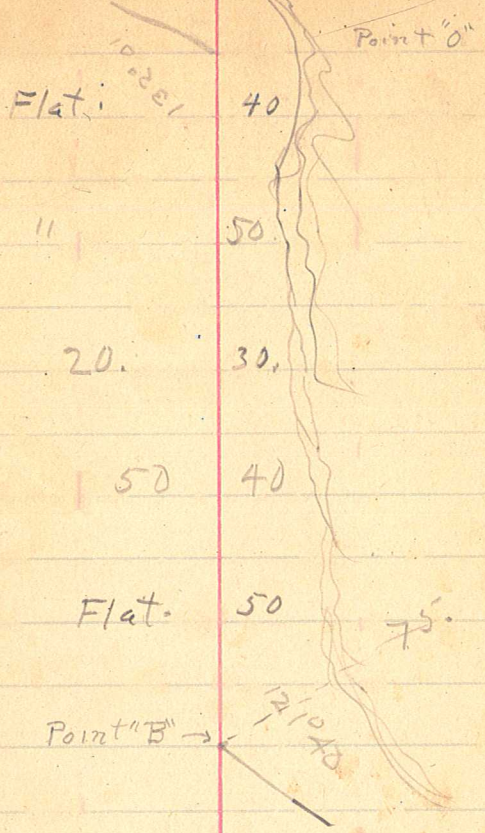
3

4

5

5

+ 76!



✓

38 ✓

5+76.1

time going down

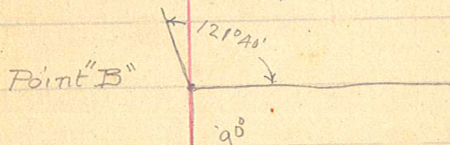
1

+50

2

+47.2

m. G.



Point "B"

200

121°40'25"

10

200

25

250

Point "C"

126°40'

30

3+472 line going so

1

2

3

+50

4

5

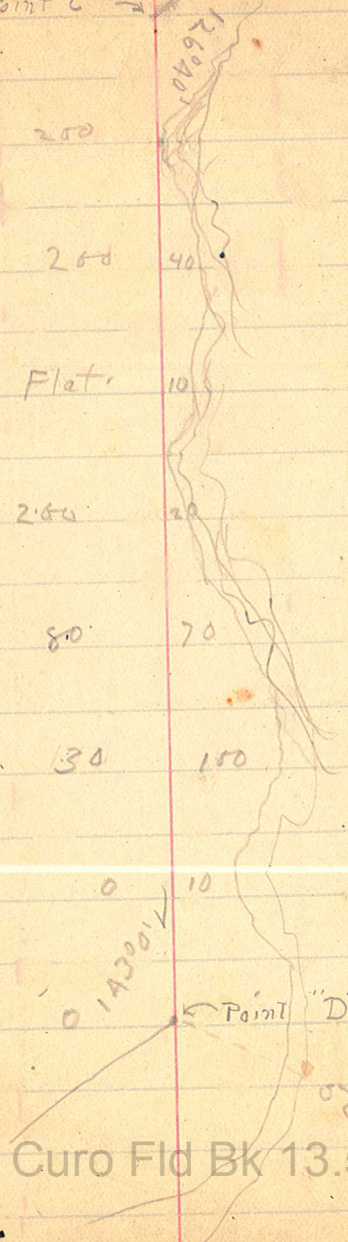
6

7

+514

✓ 41

Point "C" →



Curo fld Bk 13.5

✓

42 ✓

74514

line going to

1

2

3

N. Sta 3 good place for Road

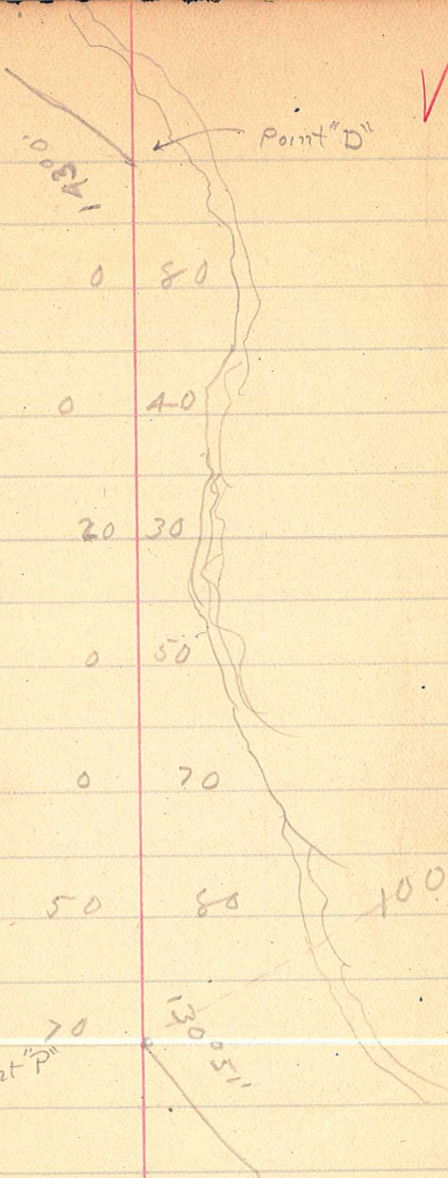
4

5

6

+48

m.c.



for Road

214 ✓

6+48

line going SE

1

2

+72.5

So. 1/4 post Sec. 8

M.C. betw Sec. 8 and 17.

Found Gov. B.P. at 1/4 post betw.
Sec. 8 and 17. Marked W. Pine 8 S. 40 E 311

New Tie

Tie to 1/4 post betw. Sec. 8 and 17.

Ash 12 N 80 W 22.0 ft.

Elm 12 S 10 W 23.0 ft.

Curo Fld Bk 13.5

Tie
betw
at 3
W. of 5

✓ 45

Point "P"

1500 ft

70 70

70 80

70 80

10" Ash
Blaze + nail



50° 35'

130° 47'

95'

Point "R"

Found one Dry Gov. B.T.
Marked. Tamarac 12 S 15 W. 14 links
Tamarac 15 1/2 N 55 W. 15 links
15 90° C

ec. 8

c. 8 and 17.

W.

408 311

} 7" Elm. 5 80 W. 19.85 Feet
 Tieto m.c.
 betw Sec 8 & 17. Dry Gov. B.T. Tam. 12 S 15 W. 14 links
 at 38.5 ch.
 W. of S.E. cor Sec 8

Curo Fid Bk 13.5

46 ✓

Sta. 0

N.W. cor Gov. lot 4

4 + 0

6 + 43.5

tie to M.C. W line Gov Lot A	{	2" Tam. S 45° W. 16.6
		2" " N 60° W 23.1

Curo Fld Bk 13.5

+ 14 to point } 5" Ash N 36° W. 12.12
 350 ± No. } 6" " " " " " " "

Se

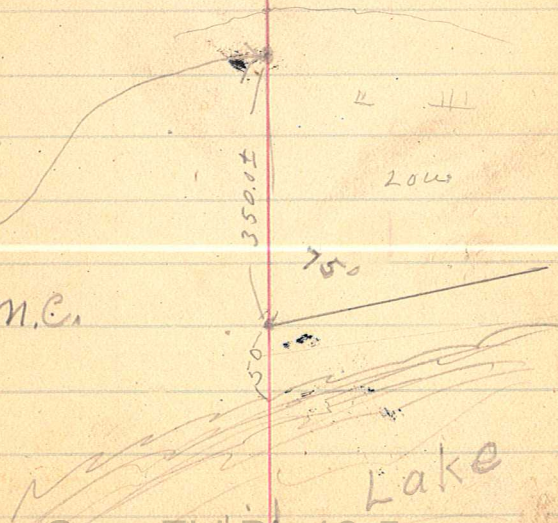
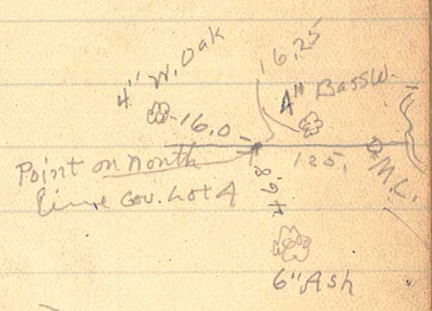
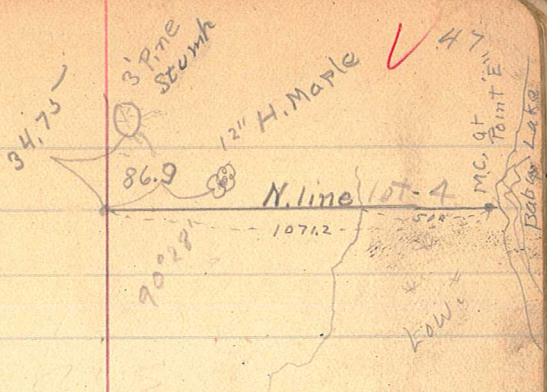
4

Set hub.

Tie to Point
 350.0 ±
 of M.C.

{ 5" Ash N 3 W. 12.12
 6" " 580 W 13.6
 12" Fir N 75 E 57.35

Set M.C.



Curo Flo Bk 13.5

48 ✓

Sta 6+43.5

M.C. at Kid Lake

1

2

+50

cut off.

3

Toe of hill

4+33

Point
across
bay

✓ 49

N. 75 E.

22° 45'

W line Lot 4

7500'

6.0

6.0

20

30.52 N

45° 55'

Sta 4+32.3

line going S. side

1

+50±

cut off

2

+50

3

+50

4

+50

5

+89.8

Sub. N side creek.

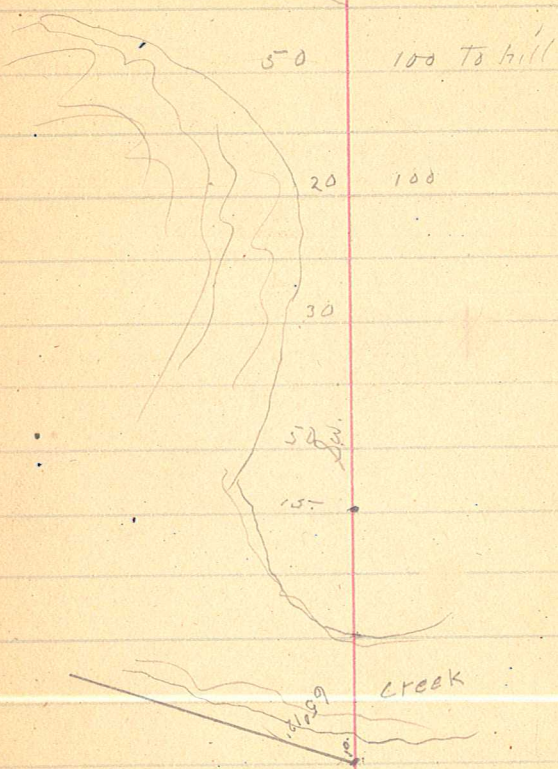
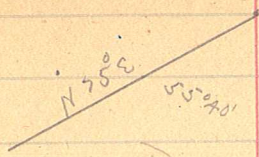
6

+10

+79.0

S. Side creek Sub.

151



52



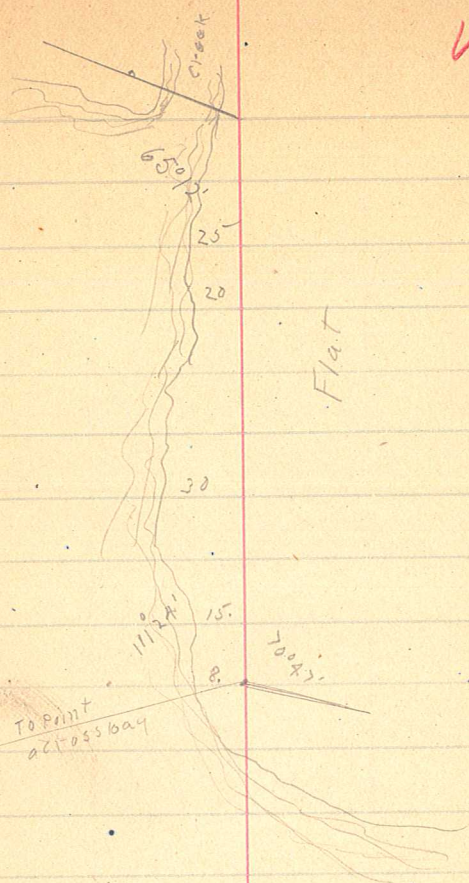
1

2

3

4

+ 11.4



54 ✓

4+114

1

2

3

4

5

6

7

8

9

10

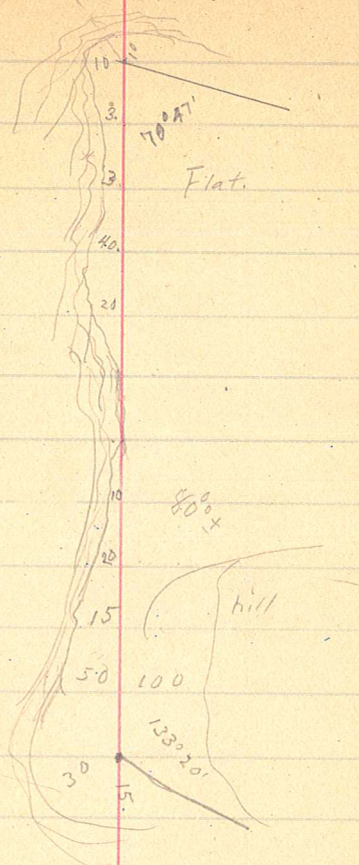
+35

Am going to go

m.c

55

W. G.



M.C.

56



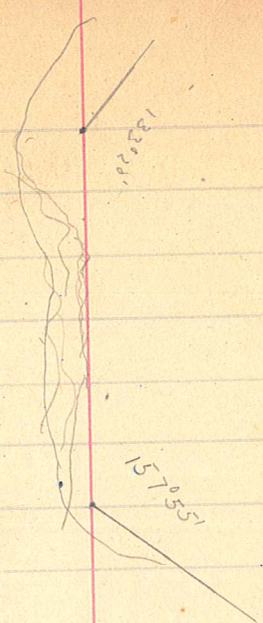
10 + 35
0

+ 50

1

+ 32.8

✓ 57



58



1 + 32.8

1

2

3

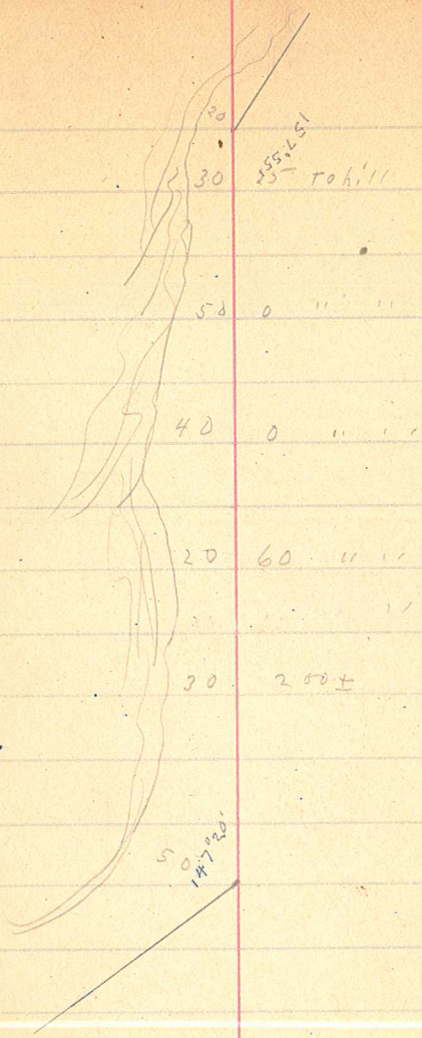
4

5

6

+ 17.9

Kid Lake



60

67.17.9

1

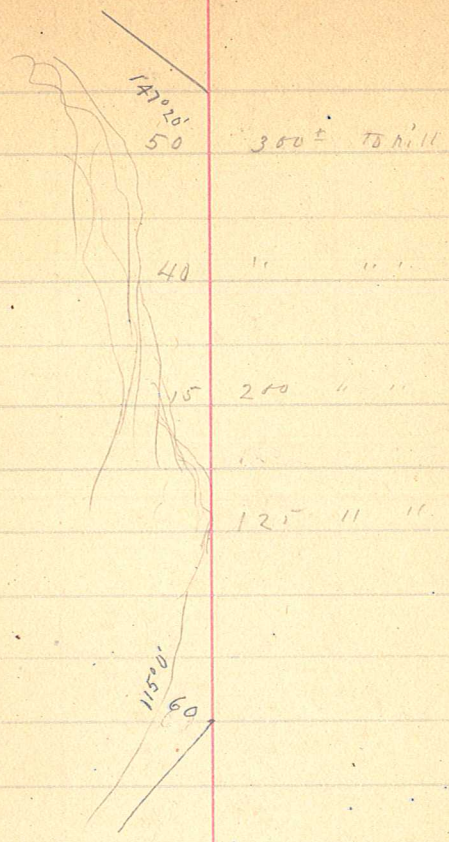
2

3

4

5

+12.5



62

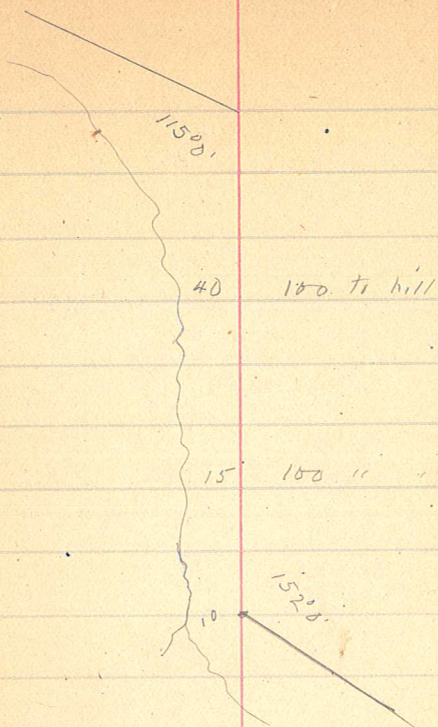


5 + 12.5

1

2

+54.6



64 ✓

$$2 + 57.6$$

1

2

3

4

5

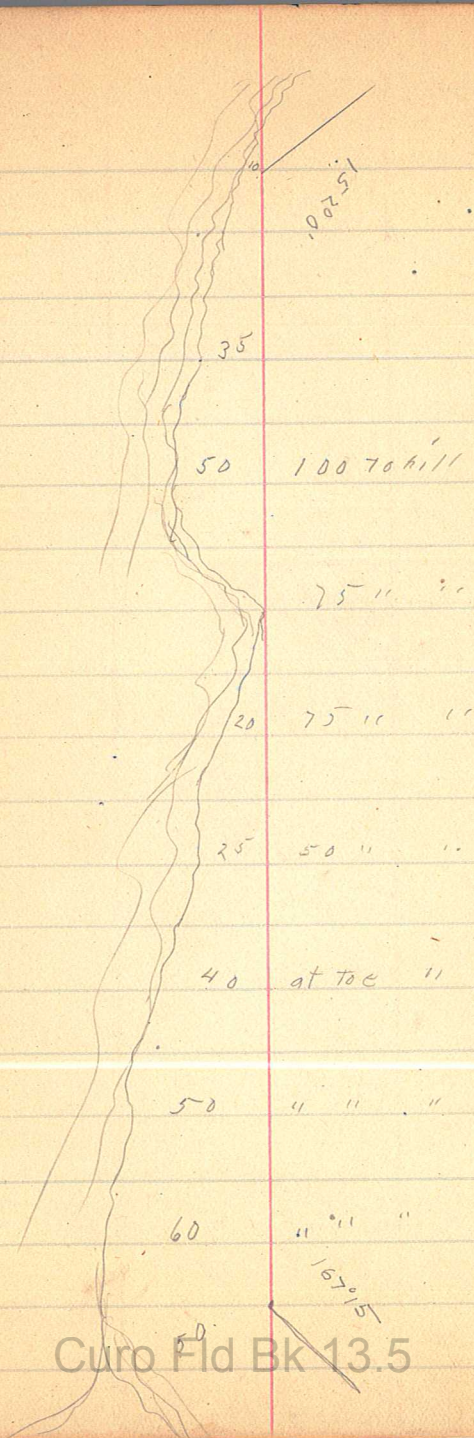
6

7

8

$$+ 46.9$$

65



Curo Fld Bk 13.5

66

Sta 8+46.7

+ 79.4

M.C. So line Sec 8

Could not find Gov. B. T. S. for M.C.
on So line Sec. 8 on E shore of Kid Lake
We set M.C. on line extended thru from
S.W. cor. Sec 8. and 5 1/4 post.

New
ties
to
M.C.
at Kid
Lake

Ash 5" N 88° E. 11.3
Ash 6" N 88 W. 5.0
Ash 5" N 82 E. 2.405
Ash 7" N 70° E 2.11

Geo Fid Bk 13.5

✓ 67

1670 ft

40

50 to hill

150 ft

30 (1000 ft hill)

500

60

So Line sec 8.

81

Lake

om

Curo Fld Bk 13.5

68

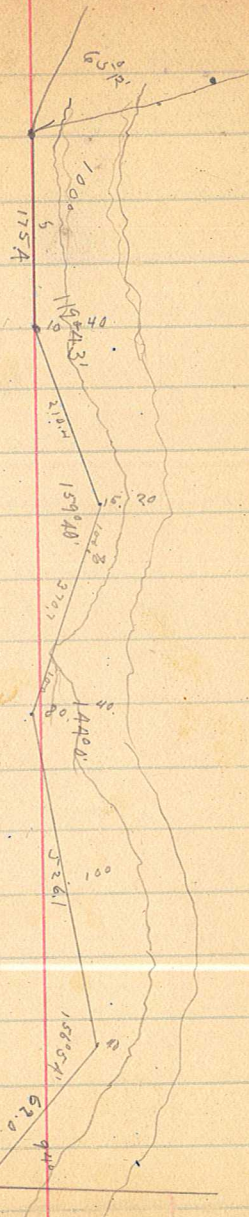
Meander line on S. side of

6279

This point on center of

side of creek.

of divide put road.



Curo Fld Bk 13.5

70 ✓

7/30/21 Pd

J. F. Knapp 212 E. 36 St.
West 42 ft. of lots 6 + 7 blk 8
Hankins Auld.

Measured plot distance from
sidewalk to establish lines of
above lot.

Did not find stakes on lot 5
which I surveyed in 1910 B2/81
but checked OK with improvements
on said lot 5 OK.

96

7/30/21



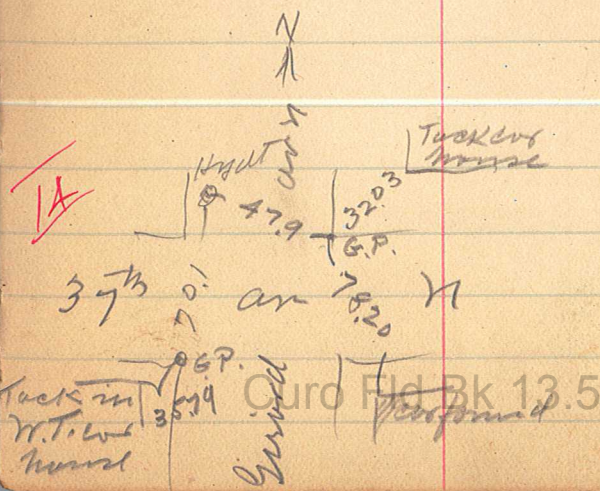
Henry Muther

Lot 17 Bk 8 Walton Park and

measured plat dist from I M on N West
of Bk 8 to establish the line of
above lot & Bk 8 to run corner
on lot 26. 0.35 centls)

In rear I measured plat dist from
run corner on lot 20 & 5 / B 8

2 of
81
into

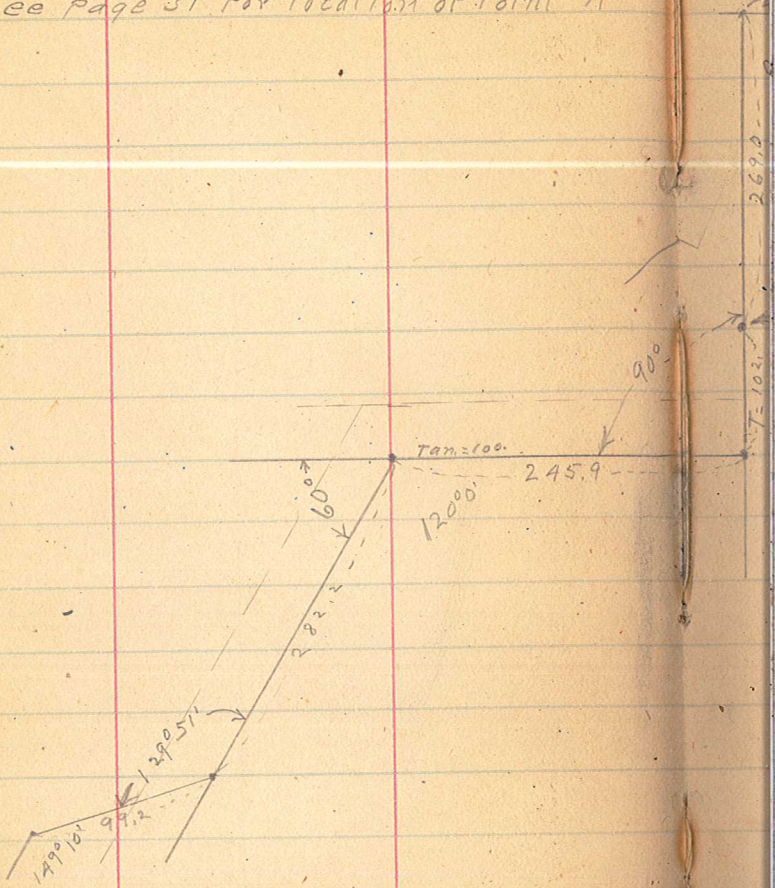


74 ✓

$\frac{2 \times 100}{100}$
 $\frac{100}{100}$

Location of Roads Parallel to Baby Lane

See page 31 for location of Point "A"



✓
75

12

911

40

160

Point "A"

90°

112° 00'

90°

269.0

B.C.

90°

102.2

76

359.68
2640
23.20
80
33.20

198
157 44
37 7.3
82.3

43
7180
1768

Location of Roads.

See page 38 For location of Point "B"

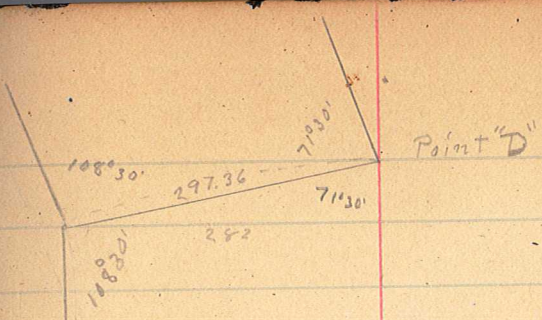
See page 39.

See page A1

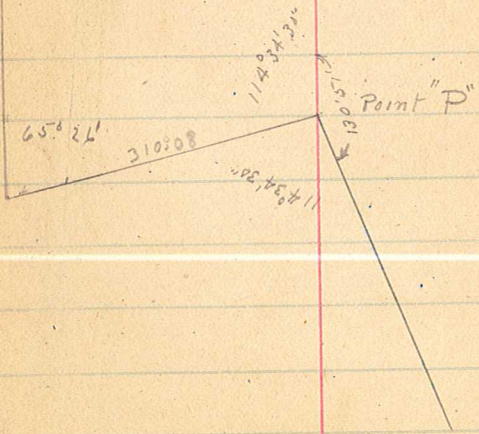
178

✓

Location of road back of
line "D-D'P" impractical



N/S



8/23/21

Pd



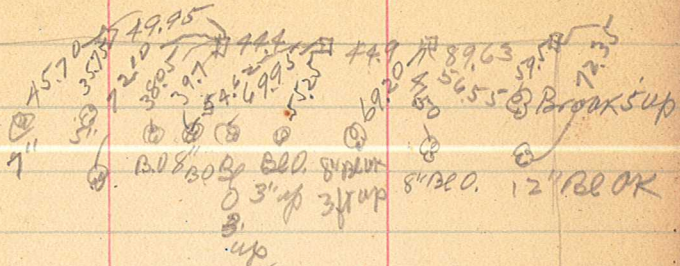
107

Frank Kerk 3335 Morgan Dr N
Lot 6 Bk 6 Sylvian Park add
Found iron corner on all corners
of lot 5 put in by Al Seibel & Burke
exc same to sink on 34 same ex
The block I found 1.75 ft long
which Seibel left south of
lot 5. I then tried to lot 5.

#23

Curo Fld Bk 13.5

Superior Ar.



cut trees

Perth Ar