

Skeleton Notes
of

134-32 Becker Twp.

135-32 Byron Twp

136-32 Poplar Twp.

133-31 South May Twp

119
FIELD BOOK

361

Do film cover, index
and pages 42 - end

Do not film page 2
to 35.

*Skeleton Notes
of*

134-32 Becker Twp.

135-32 Byron Twp

136-32 Poplar Twp.

133-31 South May Twp.

119
FIELD BOOK

361

Index

US Notes 134-32	Pg 2
" 135-32	" 10
136-32	" 22
133-31 part	" 34
Green Notes Levels-	" 42
DeLury Trial-Curox	46

2

134-32

Town & Range Corners

A	Sp. Pine	12° N. 36° W. 14	G	Tamc	B° N. 30° E. 26	m	Pine	18	5.74 3/4 W. 420	
	"	7 5.24° W. 12	"	"	8 5.18 3/4 E. 48	Aspen	7	N. 4 1/2 E. 39		
	"	12 5.46° E. 68	"	"	6 5.9 1/2 W. 18	Pine	9	N. 29 1/2 E. 164		
	"	8 5.34° E. 49	"	"	6 N. 70 W. 13	"	10	5.85 3/4 E. 263		
B	"	9 5.84° W. 450	g	Aspen	13 5.24 E. 12	"	8	5.16 1/2 W. 157		
	"	10 N. 86 1/2 W. 410	"	W. Birch	10 5.85 W. 17	Aspen	11	N. 7 1/2 W. 289		
	"	8 5.47° E. 10	"	Spruce	7 N. 39 3/4 E. 21	Sp. Pine	14	5.81 W. 103		
	"	8 5.26° W. 12	H	"	6 5.74 1/4 E. 12	"	12	5.83 W. 146		
	"	10 N. 79° W. 28	"	Aspen	11 5.17 W. 8	Sp. Pine	7	5.83 E. 104		
	"	8 N. 44° E. 45	"	W. Birch	10 N. 62 1/4 W. 32	"	10	N. 77 E. 96		
b	Tamc	5 N. 67° W. 50	"	Aspen	12 N. 36 1/2 E. 9	"	6	5.58 W. 65		
	"	7 5.57° W. 46	"	"	11 5.42 W. 12	"	9	N. 74 W. 81		
	"	5 21	I	Y. Pine	16 N. 7 W. 28	Sp. Pine	10	N. 89 W. 510		
	"	8 46	"	"	6 5.44 E. 48	"	12	5.88 W. 495		
C	"	6 48	"	"	5 N. 36 1/4 E. 15	Sp. Pine	10	5.55 W. 267		
	"	10 104	i	W. C. Pine	5 5.42 1/4 W. 33	"	6	N. 82 1/2 W. 569		
	Sp. Pine	10 106	"	Elm	5 5.42 1/4 W. 33	Sp. Pine	10	N. 67 W. 27		
	"	10 106	"	Tamc	5 5.24 1/4 W. 64	"	9	N. 26 E. 13		
D	Post	—	"	Aspen	10 N. 77 E. 27	Sp. Pine	14	5.42 E. 42		
d	Sp. Pine	12 5.89 1/2 E. 482	K	"	6 N. 50 1/4 W. 25	"	8	5.66 W. 132		
	"	10 N. 88 W. 519	"	"	8 5.86 1/4 E. 27	Y.	18	N. 15 E. 151		
	Tamc	5 N. 7 1/2 E. 72	"	"	9 5.13 W. 32	Sp.	18	N. 52 W. 339		
E	"	5 N. 65° W. 33	A	Tamc	5 5.84 W. 16	Y.	14	N. 66 W. 172		
	"	4 5.34° W. 38	"	"	5 N. 3 1/4 E. 36	Y.	7	5.73 1/2 W. 165		
	"	5 5.85° E. 149	"	Tamc	8 for Corner	W. Ash	12	N. 65 W. 10		
f	Aspen	14 N. 29 E. 22	L	"	6 N. 55 1/4 E. 16	Elm	16	5.33 W. 25		
	W. Oak	7 N. 10 W. 20	"	"	7 5.33 W. 19	W. Ash	6	5.6 E. 29		
F	Aspen	10 N. 51 E. 18	I	Oak	13 N. 29 1/2 E. 8	"	14	N. 85 E. 39		
	"	12 N. 74 W. 66	"	Aspen	12 5.68 W. 5	Aspen	8	5.62 W. 16		
	"	9 5.33 E. 43	"	"	7 N. 21 E. 9	"	7	N. 60 W. 12		
	"	9 5.18 W. 26	M	"	14 N. 46 W. 25	Sp. Pine	10	N. 83 E. 213		
f	Sp. Pine	6 N. 67 E. 38	"	Elm	6 5.20 3/4 E. 33	"	10	5.86 1/2 E. 186		
	"	10 N. 41 W. 15	"	Aspen	12 5.86 W. 20					

134-32

4

Interior Section Corners

Aspen & N60 E 70

B. D. 20

S 90° W 210

210

25 26 35 36	Aspen	8 N 60 E	20	27 28 33 34	B. Pine	5 20 W	210
"	"	10 N 58 W	206	"	Aspen	5 60 E	164
"	"	12 S 55 W	209	"	"	N 25 E	213
23 24 25 26	Aspen	4 S 76 E	22	"	B. Pine	5 30 W	25
"	Oak	4 S 45 W	120	21 22 27 28	"	5 45 E	15
"	"	10 N 46 W	212	"	"	N 12 W	30
"	"	4 N 18 E	26	"	"	N 23 E	45
13 14 23 24	B. Pine	8 N 16 W	29	"	N. Pine	5 72 1/2 W	1224
"	"	7 S 64 E	11	15 16 21 22	B. Pine	N 84 W	1385
"	"	8 S 18 1/2 W	27	9 10 15 16	Aspen	N 25 W	192
"	Norway	16 N 56 E	34	"	S. Pine	N 72 E	180
"	Willow	4 N 55 E	42	"	"	5 41 E	206
11 12 13 14	"	5 N 60 W	150	3 4 9 10	Tamé	5 88 W	192
"	Elm	8 S 80 W	284	"	"	N 73 E	27
"	Tamé	4 N 74 W	17	"	Aspen	N 77 E	75
1 2 11 12	"	4 S 35 W	12	28 29 32 33	"	N 50 1/4 W	27
"	"	4 N 78 E	5	"	"	5 86 1/4 E	32
"	"	5 S 69 E	14	"	B. Pine	5 15 W	23
26 27 34 35	B. Pine	10 N 6 E	630	20 21 28 29	"	5 37 W	24
"	"	8 S 13 W	645	"	"	N 15 1/2 E	26
"	B.	7 S 67 W	21	"	"	5 69 E	126
22 23 26 27	"	10 N 24 E	29	16 17 20 21	"	N 40 E	220
"	"	8 S 36 E	36	"	"	5 15 W	122
"	Norway	20 N 70 W	61	"	N. Pine	N 33 W	36
"	Tamé	12 N 22 E	37	8 9 16 17	"	N 23 1/2 E	33
14 15 22 23	"	8 N 43 W	24	"	"	5 87 W	17
"	"	7 S 32 W	18	"	"	5 44 E	20
"	Spruce	10 S 5 E	12	"	"	N 17 W	56
"	Tamé	4 S 57 W	8	4 5 8 9	"	N 39 E	88
10 11 14 15	"	4 S 30 E	13	"	"	5 42 W	77
"	"	5 N 75 W	20	"	"	5 55 E	31
"	"	5 N 38 E	24	"	"	"	"
"	Tamé	5 N 38 W	5	"	"	"	"
2 3 10 "	"	7 N 27 E	8	29 30 31 32	"	"	"
"	"	6 S 19 W	7	"	"	"	"
"	"	6 S 34 E	20	"	"	"	"

17 River

29 30 31 32

17 River

134-32

6

Interior Quarter Section Corners

M6 Ulat / Aspen 4 5.78 E. 22 I-X-4 N.Pine 26 5.66 E. 16 Q-D-3 B. Pine 14 West 344
 " " 4 N. 27 W. 19 B. " 12 N. 84 W. 43 4 Oak " 8 N. 6 1/2 E. 674
 2 B. Pine 8 5.15 W. 12 " " 8 N. 74 E. 170 5 Tamé 5 5.21 W. 4
 " " 8 N. 40 W. 44 " " 8 5.38 E. 186 6 Pine 10 5.42 W. 362
 3 S. Pine 8 N. 76 1/2 W. 787 " " 12 N. 88 E. 470 6 B. Pine 6 5.50 W. 685
 4 B. Pine 8 5.12 W. 13 " " 14 5.68 E. 512 Aspen 9 5.7 E. 680
 5 " " 9 N. 43 E. 16 H-Y-1 S. Pine 8 N. 4 E. 14 S-B-1 - -
 5 In river - - - N. Pine 22 5.81 W. 73
 6 " " - - - 2 Tamé 6 5.8 E. 36 " " 18 N. 20 E. 64
 L-V 1/2 lake - - - 3 B. Pine 10 N. 74 W. 19 3 B. Pine 18 5.12 W. 23
 2 " " - - - 3 B. Pine 10 N. 74 E. 18 4 " " 18 5.38 E. 77
 3 Tamé 5 5.88 1/2 E. 1182 W. " 28 5.17 E. 56 " " 7 N. 53 W. 56
 4 B. Pine 10 N. 33 E. 17 4 B. " 6 N. 17 E. 176 " " 4 N. 43 E. 53
 " " 8 5.44 E. 22 5b. " 6 5.85 W. 220 5 " " 6 5.16 E. 225
 5 Oak 10 5.72 W. 112 5 Tamé 6 5.65 W. 12 N. Pine 16 5.29 W. 356
 BOak 10 N. 34 W. 114 " 5 N. 20 E. 17 6 B. " 10 5.76 W. 14
 6 N. Pine 12 N. 56 W. 122 6 B. Pine 6 5.29 E. 108 " " 6 5.69 E. 17
 N. " 20 5.63 W. 88 " " 12 N. 50 E. 49
 H-W- 1 Tamé 4 5.81 W. 50 O-F-1 Pine 14 5.11 W. 93
 " " 6 N. 58 W. 36 Spruce 6 N. 39 E. 234
 2 B. Pine 8 5.24 W. 108 2 Lind' 8 5.49 E. 13
 3 Tamé 6 N. 60 E. 123 Oak 14 5.22 W. 19
 " " 6 5.88 E. 106 3 Maple 6 5.80 W. 28
 4 B. Pine 8 N. 41 W. 27 Aspen 8 N. 49 E. 13
 " " 10 5.42 E. 62 4 N. Pine 8 N. 30 E. 10
 5 " " 14 5.39 W. 238 " 6 5.80 W. 4
 6 " " 6 N. 86 W. 14 5 Tamé 6 N. 65 E. 8
 " " 6 5.41 E. 18 " 6 5.72 W. 12
 I-X at 1 Oak 6 N. 15 W. 16 6 Tamé 4 N. 42 E. 25
 " " 7 5.6 E. 8 " 4 5.88 W. 57
 2 Tamé 7 North 5 Q-D-1 Aspen 6 N. 10 E. 240
 " " 10 5.20 E. 11 " 8 N. 6 W. 300
 3 " 6 5.82 E. 543 2 B. Pine 12 N. 70 E. 141
 " " 6 N. 77 W. 539 Aspen 8 N. 31 W. 115

6 N. Pine 12 N. 56 W. 122 6 B. Pine 6 5.29 E. 108
 N. " 20 5.63 W. 88 " " 12 N. 50 E. 49
 H-W- 1 Tamé 4 5.81 W. 50 O-F-1 Pine 14 5.11 W. 93
 " " 6 N. 58 W. 36 Spruce 6 N. 39 E. 234
 2 B. Pine 8 5.24 W. 108 2 Lind' 8 5.49 E. 13
 3 Tamé 6 N. 60 E. 123 Oak 14 5.22 W. 19
 " " 6 5.88 E. 106 3 Maple 6 5.80 W. 28
 4 B. Pine 8 N. 41 W. 27 Aspen 8 N. 49 E. 13
 " " 10 5.42 E. 62 4 N. Pine 8 N. 30 E. 10
 5 " " 14 5.39 W. 238 " 6 5.80 W. 4
 6 " " 6 N. 86 W. 14 5 Tamé 6 N. 65 E. 8
 " " 6 5.41 E. 18 " 6 5.72 W. 12
 I-X at 1 Oak 6 N. 15 W. 16 6 Tamé 4 N. 42 E. 25
 " " 7 5.6 E. 8 " 4 5.88 W. 57
 2 Tamé 7 North 5 Q-D-1 Aspen 6 N. 10 E. 240
 " " 10 5.20 E. 11 " 8 N. 6 W. 300
 3 " 6 5.82 E. 543 2 B. Pine 12 N. 70 E. 141
 " " 6 N. 77 W. 539 Aspen 8 N. 31 W. 115

8

134-32

Meander Posts

1	W. Ash	9	N. 71 E. 30
2	"	12	S. 53 E. 60
3	Oak	20	S. 52 E. 82
4	"	10	N. 43 E. 27
5	Oak	5	S. 84 1/2 W. 62
6	Oak	10	N. 56 E. 210
7	N. Pine	10	S. 12 E. 35
8	"	12	N. 43 E. 57
9	Pine	16	S. 34 W. 12
10	"	12	N. 53 E. 52
11	Pine	14	N. 18 E. 84
12	Oak	12	S. 13 W. 52
13	B. Pine	10	N. 82 E. 14
14	Sp. "	6	N. 64 W. 16
15	Elm	6	N. 32 W. 94
16	Oak	14	N. 21 E. 188
17	Elm	10	S. 18 W. 32
18	Maple	10	N. 76 E. 37
19	B. Pine	6	N. 51 E. 17
20	"	6	S. 25 E. 20
21	Sp. Pine	6	N. 36 E. 32
22	"	9	N. 12 W. 74

135-32

10

Town & Range Corners

A	In lake	W. cor.	east 514
a	W. Pine	28	558E 97
	S. Pine	10	N 61E 52
	"	10	N 14E 17
	"	8	554W 37
	"	8	549E 34
	"	12	557W 27
	Tam. c.	6	N 7W 5
	"	6	N 32E 18
	S. Pine	6	N 70E 5
	"	7	N 25W 25
	"	9	541W 22
	"	6	516E 48
	"	14	South 31
	"	10	570E 10
	Y. Pine	16	N 74E 238
	"	16	N 67W 120
	"	16	57E 99
	"	14	559W 80
	"	24	N 69E 174
	"	18	N 64W 57
	"	8	N 22E 15
	"	9	N 53W 27
	"	7	557E 22
	"	6	559W 14
	Tam. c.	5	N 53W 5
	W. Pine	30	N 18E 58
	Tam. c.	5	N 15E 25
	"	5	N 74W 56
	"	8	555W 93
	"	7	551E 32
	Lind.	9	N 24E 46
	"	14	N 13W 42

12

135-32

T	S. Pine	12	N 36 W	14
"	"	7	S 24 W	12
"	"	2	S 46 E	68
"	"	8	N 34 E	49
T	"	12	N 1/2 E	385
"	"	16	N 2 W	420
Tam ^c	"	9	S 49 E	22
U	"	8	N 6 E	17
"	"	5	N 65 W	6
"	"	6	S 87 W	31
u	S. Pine	10	S 1/4 W	1163
"	"	10	S 1/2 E	1167
"	S. Pine	9	N 51 E	10
V	"	8	N 30 W	12
"	"	12	S 34 W	33
"	"	9	S 32 E	35
v	X. Pine	16	N 40 W	28
"	"	18	S 21 W	62
"	S. Pine	10	S 9 W	85
W	X. Pine	8	S 6 1/2 E	127
"	X. Pine	16	N 73 E	224
w	In Lake			
X	X. Pine	18	S 6 1/2 W	865
"	X. Pine	18	S 34 E	825
x	S. Pine	14	S 66 W	25
"	"	9	S 12 W	80
Tam ^c	"	6	N 19 W	8
Y	"	6	S 77 W	20
"	"	4	S 72 E	14
"	"	6	N 64 E	27
y	"	10	N 80 W	21
"	"	10	S 61 W	15

135-32

14

Interior Section Corners

29.9
8.9
21.0

29.9
8.9
21.0

29.9
8.9
21.0

29.9
8.9
21.0

N. D. 11 52.14 21 97 90 33 34 W. D. 22 N. 45 E 45

25	26	35	36	N. Pine 16	530W 21
				B. Pine 10	571½E 64
				Birch 8	N24W 31
				N. Pine 20	N16E 7
				Aspen 5	569½E 32
23	24	25	26	B. Oak 4	N58E 11
				Aspen 4	N37W 26
				W. Birch 8	59W 25
13	14	23	24	B. Oak 10	N53½E 428
				Maple 10	N1½E 3
				W. Oak 10	N56E 58
				" 14	N21W 65
				Tam. 8	N7½E 34
1	2	11	12	Aspen 8	568½E 36
				" 6	536½W 24
				Spruce 6	N26½W 43
				W. Oak 6	N75½W 15
26	27	34	35	Aspen 8	537½E 12
				W. Oak 8	N31E 41
				" 7	547W 44
				Y. Pine 10	550W 68
22	23	26	27	" 16	N78W 67
				" 14	570E 61
				" 10	N52½E 82
				B. Pine 14	526½W 113
14	15	22	23	Spruce 8	N62E 87
				Y. Pine 22	58E 139
				Y. Pine 20	530E 25
10	11	14	15	" 16	N33E 67
				" 22	587E 77
				" 14	N15½W 91
2	3	10	11	B. Pine 6	N11½W 256
				Tam. 6	557W 265

27	28	33	34	W. Pine	22	N65E	45
				" "	24	525E	35
				" "	24	526W	70
				Birch 6	N82W	30	
				Aspen 10	572E	34	
21	22	27	28	Tam. 8	N37E	69	
				Aspen 10	N4W	36	
				B. Pine 8	N59E	136	
15	16	21	22	B. " 8	N4W	149	
				B. " 6	529½W	105	
				B. " 8	519½E	16	
9	10	15	16	B. " 8	563W	19	
				B. " 8	N76W	5	
				B. " 8	N18E	19	
3	4	9	10	Y " 10	588½E	133	
				Y " 12	N77E	197	
28	29	32	33	Y " 22	586W	559	
				B. " 16	N70W	362	
				B. " 5	N12E	46	
20	21	28	29	B. " 5	580E	138	
				B. " 6	574W	182	
				B. " 6	N84W	242	
				B. " 4	N82½E	19	
16	17	20	21	B. " 4	525½E	27	
				B. " 4	564½W	33	
				B. " 5	N74W	17	
8	9	16	17	Tam. 10	N40W	330	
				B. Pine 12	580W	430	
				" 12	568½E	17	
4	5	8	9	" 14	N27½E	21	
				" 5	N23W	39	
				" 5	529½W	21	

7.98
27.06
29.04
41.86

16

135-32

29	30	31	32	B. Pine	12	N 16 E	100
				B. "	12	N 20 W	154
				B. "	8	S 22 W	41
				B. "	—	—	—
				B. "	6	N 74 E	39
19	20	29	30	B. "	6	S 68 1/2 E	46
				B. "	14	S 62 W	32
				B. "	14	N 32 1/2 W	53
				W. Corner	825	South	
17	18	19	20	" "	750	East	
				B. Pine	8	N 81 W	130
				B. "	10	S 83 E	127
				Tam. "	5	N 54 W	4
7	8	17	18	" "	4	S 47 E	29
				Spruce	4	N 67 1/2 E	12
				" "	4	S 52 W	30
5	6	7	8	Tam. "	10	N 14 W	82
				Spruce	10	N 2 1/2 W	89

135-32

18

Interior Quarter Section Corners.

M to Ulat 1	Tamc	10	586 E	40	I to X-1 Aspen	8	N 40 1/2 E 130	P-E, -1	B. Pine	12	5 70 1/2 W 10
2	B. Pine	8	N 47 1/2 E 60	60	"	10	5 64 1/2 W 226	2	"	14	5 37 E 18
3	"	14	N 78 E 54	54	"	14	5 25 E 5	2	"	18	N 51 1/2 E 26
4	"	14	5 39 E 16	16	"	14	N 5 1/2 W 50	3	Y "	22	5 74 1/2 W 66
5	"	8	5 5 E 20	20	3 Y Pine	18	N 68 1/2 E 50	4	Oak	10	5 35 W 32
6	"	12	N 33 E 20	20	Y "	16	5 8 E 55	5	W. Pine	18	N 66 E 61
7	"	8	N 8 E 202	202	4 B. "	10	5 54 W 40	6	"	10	5 41 E 50
8	"	6	5 78 1/2 W 143	143	5 B. "	10	5 73 E 62	7	Y "	18	5 41 W 103
9	"	12	5 63 1/2 W 99	99	6 B. "	10	5 73 E 69	8	Y "	12	N 39 E 7
10	"	5	5 20 1/2 E 72	72	2 Oak	6	N 45 E 40	9	Y "	12	N 60 W 15
11	"	12	5 63 1/2 W 99	99	3 Post	12	N 48 E 125	10	Oak	8	5 68 E 57
12	"	5	5 20 1/2 W 72	72	4 B. Pine	10	5 58 W 95	11	Y Pine	24	5 15 W 78
13	"	6	5 8 1/2 W 8	8	5 B. Pine	16	N 84 1/2 E 279	12	Tamc	12	5 66 E 15
14	"	6	N 47 E 10	10	6 Post	8	5 62 E 6	13	"	8	5 79 W 6
15	"	6	N 47 E 10	10	3 Post	10	N 68 1/2 W 25	14	"	5	N 47 1/2 E 23
16	"	6	N 47 E 10	10	4 B. Pine	6	N 78 E 51	15	"	6	N 1/2 E 236
17	"	5	N 75 E 102	102	5 B. Pine	6	5 84 E 59	16	"	8	5 33 E 25
18	"	12	N 89 W 305	305	6 Post	6	5 84 E 59	17	"	8	5 36 1/2 W 22
19	"	8	5 33 1/2 E 38	38	3 Post	6	N 81 1/2 W 4	18	"	12	N 23 1/2 E 24
20	"	12	N 60 1/2 E 61	61	4 B. Pine	6	5 89 1/2 E 19	19	Y Pine	14	5 46 W 13
21	"	16	N 56 E 152	152	5 B. "	6	5 68 1/2 E 49	20	"	10	N 57 W 127
22	"	20	N 59 W 290	290	6 B. "	6	N 78 E 58	21	"	12	5 56 E 240
23	"	12	N 53 1/2 E 141	141	3 Aspen	6	N 39 E 39	22	"	10	5 81 E 55
24	"	18	N 87 1/2 W 413	413	4 "	12	N 15 W 25	23	"	10	N 89 1/2 W 39
25	"	20	5 18 W 52	52	5 "	10	N 51 E 12	24	"	16	5 66 E 19
26	"	18	N 24 1/2 W 44	44	6 "	12	N 10 1/2 W 11	25	"	20	5 70 W 109
27	"	12	N 17 E 130	130	7 "	8	5 49 E 4	26	"	8	5 47 E 6
28	"	15	N 34 E 90	90	8 "	8	5 70 1/2 W 74	27	"	8	N 42 W 10
29	"	10	5 4 W 11	11	9 "	24	N 40 W 28	28	"	8	N 78 E 23
30	"	12	N 8 1/2 E 10	10	10 "	14	5 43 E 28	29	"	10	5 61 W 35
31	"	6	N 8 1/2 E 10	10	11 "			30	"		
32	"	6	N 8 1/2 E 10	10	12 "			31	"		
33	"	6	N 8 1/2 E 10	10	13 "			32	"		
34	"	6	N 8 1/2 E 10	10	14 "			33	"		
35	"	6	N 8 1/2 E 10	10	15 "			34	"		
36	"	6	N 8 1/2 E 10	10	16 "			35	"		
37	"	6	N 8 1/2 E 10	10	17 "			36	"		
38	"	6	N 8 1/2 E 10	10	18 "			37	"		
39	"	6	N 8 1/2 E 10	10	19 "			38	"		
40	"	6	N 8 1/2 E 10	10	20 "			39	"		
41	"	6	N 8 1/2 E 10	10	21 "			40	"		
42	"	6	N 8 1/2 E 10	10	22 "			41	"		
43	"	6	N 8 1/2 E 10	10	23 "			42	"		
44	"	6	N 8 1/2 E 10	10	24 "			43	"		
45	"	6	N 8 1/2 E 10	10	25 "			44	"		
46	"	6	N 8 1/2 E 10	10	26 "			45	"		
47	"	6	N 8 1/2 E 10	10	27 "			46	"		
48	"	6	N 8 1/2 E 10	10	28 "			47	"		
49	"	6	N 8 1/2 E 10	10	29 "			48	"		
50	"	6	N 8 1/2 E 10	10	30 "			49	"		
51	"	6	N 8 1/2 E 10	10	31 "			50	"		
52	"	6	N 8 1/2 E 10	10	32 "			51	"		
53	"	6	N 8 1/2 E 10	10	33 "			52	"		
54	"	6	N 8 1/2 E 10	10	34 "			53	"		
55	"	6	N 8 1/2 E 10	10	35 "			54	"		
56	"	6	N 8 1/2 E 10	10	36 "			55	"		
57	"	6	N 8 1/2 E 10	10	37 "			56	"		
58	"	6	N 8 1/2 E 10	10	38 "			57	"		
59	"	6	N 8 1/2 E 10	10	39 "			58	"		
60	"	6	N 8 1/2 E 10	10	40 "			59	"		
61	"	6	N 8 1/2 E 10	10	41 "			60	"		
62	"	6	N 8 1/2 E 10	10	42 "			61	"		
63	"	6	N 8 1/2 E 10	10	43 "			62	"		
64	"	6	N 8 1/2 E 10	10	44 "			63	"		
65	"	6	N 8 1/2 E 10	10	45 "			64	"		
66	"	6	N 8 1/2 E 10	10	46 "			65	"		
67	"	6	N 8 1/2 E 10	10	47 "			66	"		
68	"	6	N 8 1/2 E 10	10	48 "			67	"		
69	"	6	N 8 1/2 E 10	10	49 "			68	"		
70	"	6	N 8 1/2 E 10	10	50 "			69	"		
71	"	6	N 8 1/2 E 10	10	51 "			70	"		
72	"	6	N 8 1/2 E 10	10	52 "			71	"		
73	"	6	N 8 1/2 E 10	10	53 "			72	"		
74	"	6	N 8 1/2 E 10	10	54 "			73	"		
75	"	6	N 8 1/2 E 10	10	55 "			74	"		
76	"	6	N 8 1/2 E 10	10	56 "			75	"		
77	"	6	N 8 1/2 E 10	10	57 "			76	"		
78	"	6	N 8 1/2 E 10	10	58 "			77	"		
79	"	6	N 8 1/2 E 10	10	59 "			78	"		
80	"	6	N 8 1/2 E 10	10	60 "			79	"		
81	"	6	N 8 1/2 E 10	10	61 "			80	"		
82	"	6	N 8 1/2 E 10	10	62 "			81	"		
83	"	6	N 8 1/2 E 10	10	63 "			82	"		
84	"	6	N 8 1/2 E 10	10	64 "			83	"		
85	"	6	N 8 1/2 E 10	10	65 "			84	"		
86	"	6	N 8 1/2 E 10	10	66 "			85	"		
87	"	6	N 8 1/2 E 10	10	67 "			86	"		
88	"	6	N 8 1/2 E 10	10	68 "			87	"		
89	"	6	N 8 1/2 E 10	10	69 "			88	"		
90	"	6	N 8 1/2 E 10	10	70 "			89	"		
91	"	6	N 8 1/2 E 10	10	71 "			90	"		
92	"	6	N 8 1/2 E 10	10	72 "			91	"		
93	"	6	N 8 1/2 E 10	10	73 "			92	"		
94	"	6	N 8 1/2 E 10	10	74 "			93	"		
95	"	6	N 8 1/2 E 10	10	75 "			94	"		
96	"	6	N 8 1/2 E 10	10	76 "			95	"		
97	"	6	N 8 1/2 E 10	10	77 "			96	"		
98	"	6	N 8 1/2 E 10	10	78 "			97	"		
99	"	6	N 8 1/2 E 10	10	79 "			98	"		
100	"	6	N 8 1/2 E 10	10	80 "			99	"		

20

135-32

Meander Posts.

1 Y. Pine 9 5 17 W 226
 X " 18 N 15 W 276
 2 Y " 20 N 14½ E 264
 3 B " 10 S 32 W 70
 " " 10 S 78½ E 56
 4 Tamic 10 N 40 W 330
 B. Pine 12 S 80 W 430

6 Y. Pine 14 5 34 W 18
 B " 6 5 32 E 27
 St. B. at 1 B. Pine 8 N 78 E 70
 B " 10 5 34 W 50
 2 B " 10 West 240
 B " 10 N 86 W 247
 3 Tamic 5 N 51 W 6
 " 5 N 27 E 23
 4 B. Pine 5 5 34 W 54
 B " 6 5 86 E 109
 5 B " 10 N 48 W 10
 B " 10 N 66 E 20
 6 Tamic 12 N 2 W 4
 " 10 5 80 E 18

136-32

22

1

Town & Range Corners.

24

136-32

V	S. Pine	12 S	10 E	30
	Y "	14 S	23 W	51
	Tamé	5 N	9 E	52
	S. Pine	5 N	60 W	26
V	W. Pine	16 N	39 E	10
	W "	20 S	87 W	34
	" "	7 S	57 E	75
	Oak	10 S	35 W	65
W	Aspen	14 N	38 W	87
	"	14 N	51 E	150
w	Tamé	6 N	51 W	18
	"	6 S	67 W	24
	Aspen	6 S	14 E	23
X	"	6 S	72 E	27
	"	7 N	72 W	32
	"	5 S	53 W	25
x	"	8 S	63 W	16
	Tamé	5 N	16 W	48
	"	5 N	52 E	30
Y	"	5 N	38 E	31
	"	6 S	49 W	19
	"	5 S	26 E	27
y	"	5 N	55 W	14
	"	5 S	46 W	19

136-32

26

$$\begin{array}{r} 251 \\ 6 \\ \hline 1530 \\ 153 \\ \hline 168.30 \end{array}$$

13

Interior Section Corners

25	26	35	36	Tamc	6 N 85% E 86
23	24	25	26	"	6 S 68 1/2 W 88
13	14	23	24	W. Oak	12 N 13 1/2 W 255
11	12	13	14	"	12 N 13 1/2 E 240
				Aspen	6 N 1/2 E 206
				"	8 N 1/2 W 204
				Spruce	9 N 9 1/2 E 5
				"	8 N 10 1/2 W 10
				Balsam	6 S 12 1/2 E 16
				Birch	7 S 77 W 23
1	2	11	13	Tamc	10 N 70 E 15
				"	8 S 30 1/2 W 35
				"	8 S 28 1/2 E 34
26	27	34	35	"	10 S 4 1/2 W 145
				"	5 N 55 E 10
				"	8 N 16 3/4 W 51
22	23	26	27	"	18 N 26 E 10
				"	16 S 11 W 23
				Spruce	5 S 54 E 14
14	15	22	23	"	4 N 52 W 86
				Y. Pine	22 S 89 1/2 W 135 1/2
				W. "	30 N 87 1/2 W 1800
				Aspen	8 N 68 3/4 E 60
10	11	14	15	"	6 S 62 E 100
				Spruce	4 S 13 W 57
				Tamc	5 N 47 W 73
2	3	10	11	W. Pine	30 S 89 E 570
				"	14 N 89 E 670
				B. Pine	6 S 50 1/2 W 12
27	28	33	34	"	8 N 53 W 8
				"	8 N 73 1/2 E 33
				"	6 S 63 E 37

21	22	27	28	B. Pine	10 N 23 E 45
				"	8 S 32 E 15
				"	5 S 10 W 58
				"	5 N 68 W 75
15	16	21	22		
9	10	15	16	Aspen	12 S 34 W 147
				Spruce	5 N 1 E 189
				Tamc	14 N 2 W 400
3	4	9	10	Y. Pine	22 N 58 E 23
				Y. Pine	8 S 27 1/2 W 20
				Y. "	6 N 41 W 140
				B. "	10 S 35 E 24
				B. "	5 S 17 1/2 W 160
28	29	32	33	B. "	10 S 36 E 312
				B. "	8 N 29 E 202
				B. "	8 N 4 W 94
20	21	28	29	Tamc	5 S 76 1/2 E 127
				B. Pine	12 N 24 W 102
16	17	20	21	"	4 N 82 1/2 E 19
				"	4 S 25 1/2 E 27
				"	4 S 64 1/2 W 33
				"	5 N 47 W 17
8	9	16	17	Tamc	6 S 70 E 33
				"	3 N 45 E 13
				"	4 S 87 1/2 W 124
				B. Pine	4 N 30 1/2 W 25
4	5	8	9	"	12 S 68 1/2 E 17
				"	14 N 27 1/2 E 21
				"	5 N 23 W 39
				"	5 S 29 1/2 W 21
20	30	31	32	Y. Pine	22 S 18 1/2 E 170
				B. "	10 N 12 1/2 E 365

28

136-32

19	20	29	30	Spruce	5	5	10	E	3
				Tamc	8	N	53½	W	17
				Spruce	8	S	17	W	27
				Tamc	6	N	4½	E	15
				"	4	S	55	W	11
				"	8	N	69	E	70
17	18	19	20	Aspen	10	S	82½	E	79
				Oak	8	N	15½	E	48
7	8	17	18	"	12	N	57	W	103
				"	16	S	22	W	24
				"	14	S	38	E	44
				Basswood	12	S	16	E	73
5	6	7	8	"	12	S	10½	W	43
				"	14	N	67	W	17
				Balsam	8	N	57	E	43

136-32

30

Interior Quarter Section Corners.

M-U	1	W. Oak	18	N 37 1/2 E	14	I-X	1	Birch	6	N 9 1/2 W	22	R-E	1	Y. Pine	8	S 74 E	47
	2	Balsam	6	S 35 1/2 E	8		2	Spruce	12	S 4 W	19			Aspen	4	S 39 1/2 W	25
	3	Oak	5	N 20 E	5		3	"	5	N 40 W	7		2	Oak	14	S 73 E	43
	4	Aspen	12	S 17 W	24		4	Tamc	5	S 54 1/2 E	26		3	"	12	S 81 W	61
	5	B. Pine	10	S 12 1/2 W	10		5	"	10	N 64 1/2 E	62		4	B. Pine	8	N 75 1/2 E	95
	6	"	6	N 26 3/4 E	62		6	Spruce	5	S 52 E	31		5	"	5	N 33 1/2 E	69
	7	B "	8	N 8 E	202		7	B. Pine	10	S 22 E	74		6	Aspen	6	N 29 1/2 W	176
	8	"	6	S 78 1/4 W	143		8	"	8	N 31 1/2 W	69		7	"	8	N 44 1/2 E	16
	9	B "	10	S 38 E	115		9	Tamc	6	N 50 1/2 E	60		8	Tamc	10	N 75 W	15
	10	Y "	12	N 82 E	260		10	"	6	S 53 1/2 E	26		9	Balm	10	N 88 W	32
	11	Y "	16	S 36 1/2 W	30		11	Post	22	N 66 W	27		10	Post	6	S 34 1/2 E	37
	12	B "	8	N 73 1/2 E	40	H-Y	1	Y. Pine	30	S 33 W	19		11	B "	6	N 28 1/2 W	11
	13	B "	8	N 31 1/2 W	17		2	W "	8	N 11 E	13		12	"	5	N 40 1/4 E	9
	14	Tamc	8	S 32 1/2 E	67		3	Tamc	6	S 37 W	19		13	"	14	N 73 E	78
	15	Aspen	5	N 5 1/2 E	30		4	Spruce	10	N 72 1/2 E	44		14	Y. Pine	12	N 22 W	69
	16	Tamc	5	S 29 1/2 E	23		5	Tamc	5	S 37 E	19		15	Y. Pine	8	S 49 W	8
	17	W. Oak	12	N 21 W	68		6	Post	10	S 20 E	17		16	Y "	12	N 5 E	115
	18	Aspen	12	S 83 E	89		7	"	6	S 9 E	28		17	Y "	14	N 2 W	387
	19	W. Pine	5	S 41 1/2 W	9		8	Tamc	6	S 63 E	16		18	Y "	6	S 45 1/2 W	5
	20	"	8	N 30 W	11		9	Birch	8	S 57 1/2 W	82	R-C	1	B "	5	N 22 1/2 W	14
	21	Post	14	N 85 E	418		10	"	6	S 38 1/2 E	104		2	B "	10	N 59 W	96
	22	Y. Pine	8	N 42 E	18	O-F	1	Aspen	4	N 43 W	18		3	Y "	8	N 19 1/2 E	50
	23	Tamc	10	S 15 E	14		2	W. Oak	6	N 17 E	17		4	Y "	4	S 35 1/2 E	62
	24	Spruce	6	S 41 E	14		3	Catwood	10	S 59 1/2 E	60		5	Tamc	10	S 33 E	27
	25	"	6	N 11 E	9		4	Tamc	10	N 84 1/2 W	18		6	"	8	S 71 1/2 W	12
	26	Aspen	10	S 88 1/2 E	79		5	Post	24	S 57 1/2 E	45		7	"	4	S 9 1/2 W	120
	27	Y. Pine	12	N 84 E	64		6	W. Pine	6	N 39 1/2 W	38		8	W. Pine	36	N 63 1/2 E	20
	28	"	20	N 65 W	40		7	" Birch	8	S 49 E	32		9	Balsam	8	S 69 W	25
	29	W. Oak	12	N 37 1/2 W	81		8	Tamc	5	S 14 1/2 W	15						
	30	B. Pine	6	S 78 E	103			"									
	31	B. Pine	4	N 61 E	21												
	32	Y "	6	S 23 W	56												

32

136-32

No Meander Bst's

5-B 1 B. Pine 8 550 $\frac{1}{2}$ W 212
 2 Y " 12 N $3\frac{1}{4}$ W 12.48
 3 Aspen 18 N 66 W 4
 " 8 S 18 $\frac{1}{2}$ E 28
 4 Tamc 5 N 10 W 203
 5 Post 10 S 53 E 15
 6 Tamc 8 N 39 W 10
 "

34

133-31

A.	Pine	9	N. 29 1/2 E.	164
	"	10	N. 85 3/4 E.	263
	"	8	S. 16 1/2 W.	157
	Aspen	11	N. 7 1/2 W.	289
a	Aspen	10	N. 4 E.	325
	"			

42 Town Line bet Byron and E Poplar

Levels

B.M. Top of fence post on side
of road on south side on.
height of ground. Assumed elev. =
100' 2' south of cross fence

-5	H.1	+5	Elev	Obj.	
	99.9		100'	B.M.	
7.8'			92.1	Bridge	
11.5'		89.4	88.4	Bottom creek	
9.7'		89.6	90.2	#1 E	C-6'
9.0'		89.8	90.9	#2 E	1.1
8.6		90.0	91.3	#3 E	1.3
8.1		90.2	91.8	#4 E	1.6
8.4		90.4	91.5	#5 E	1.1
7.8		90.6	92.1	#6 E	1.5
5.75	101.50	7.35	94.15	Top #6 E	
9.0		90.8	92.5	7	1.7
8.3		91.0	93.2	8	2.2
7.9		91.2	93.6	9	2.4
7.7		91.4	93.8	10	2.4
7.6		91.6	93.9	11	2.3
7.3		91.8	94.2	12	2.4
7.0		92.0	94.5	13	2.5
6.8		92.2	94.7	14	2.5
6.8		92.4	94.7	15	2.3
6.6		92.6	94.9	16	2.3
4.5			97.0	Top #16	

June 10-1927

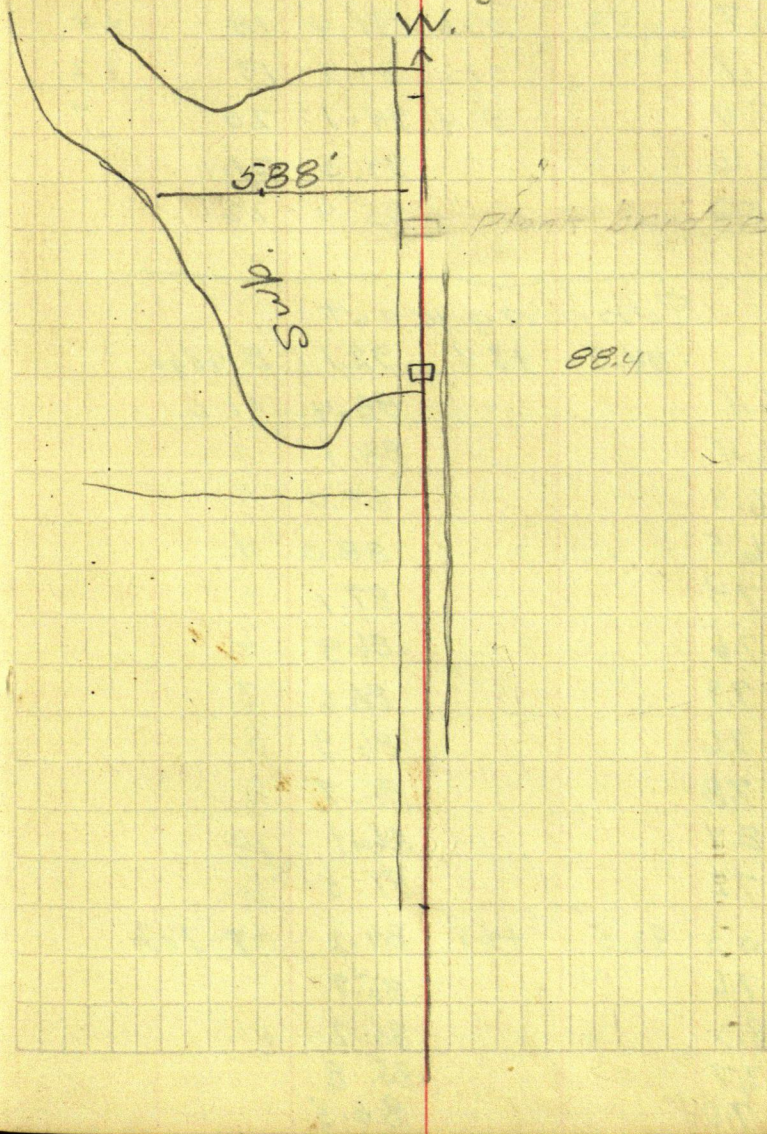
43

Greene

Bartlett

Saurs

Arrived on job at 9.30 A.M.



44

-S	H.I.	+S	Elev.	Obj	
	101.1	4.1	97.0	Top #16	
6.5		92.8	94.6	17	1.8
6.7		93.0	94.4	18	1.4
6.7		93.2	94.4	19	1.2
7.0		93.4	94.1	20	<u>1</u>
6.6			94.5	21	
5.2			95.9	22	

Running west

	94.5	+2.4	92.1	Bridge	
6.1			88.4	#1 E	
6.4			88.1	2	
6.5			88.0	3	
6.5			88.0	4	
7.4			87.1	5	
7.6			86.9	6	
7.9			86.6	7	
7.6			86.9	8	
7.8			86.7	9	
8.4			86.1	10	
7.2			87.3	11	
5.3	93.5'	+4.3	89.2	#7-Top	
7.6			85.9		
8.3			85.2	v	
7.7			85.8		
7.0			86.5		

45

$$\begin{array}{r} 94.0 \\ \underline{89.4} \\ 20 \quad 4.6 \end{array}$$

46

D. C. G.

1939

$$\begin{array}{r} 1807 \times 20 \\ \underline{2} \\ 3600 \end{array}$$

L 8.2

$$\begin{array}{r} 4356 \overline{) 36000} \\ \underline{37848} \\ 11520 \end{array}$$

Went $\frac{1}{2}$ NE $\frac{1}{4}$ Sec 7-141-27

John Ivers Babcock - a
ch - Rod.

Buff & Buzen π 300' T. p.

John W. Owsen π

47

1040
13204

111

11820 ft

1328

2452

375 E
1420 N

375 E

625
NW corner

760 N
230
660 N

Gole

775 E
SW corner

520

400 N

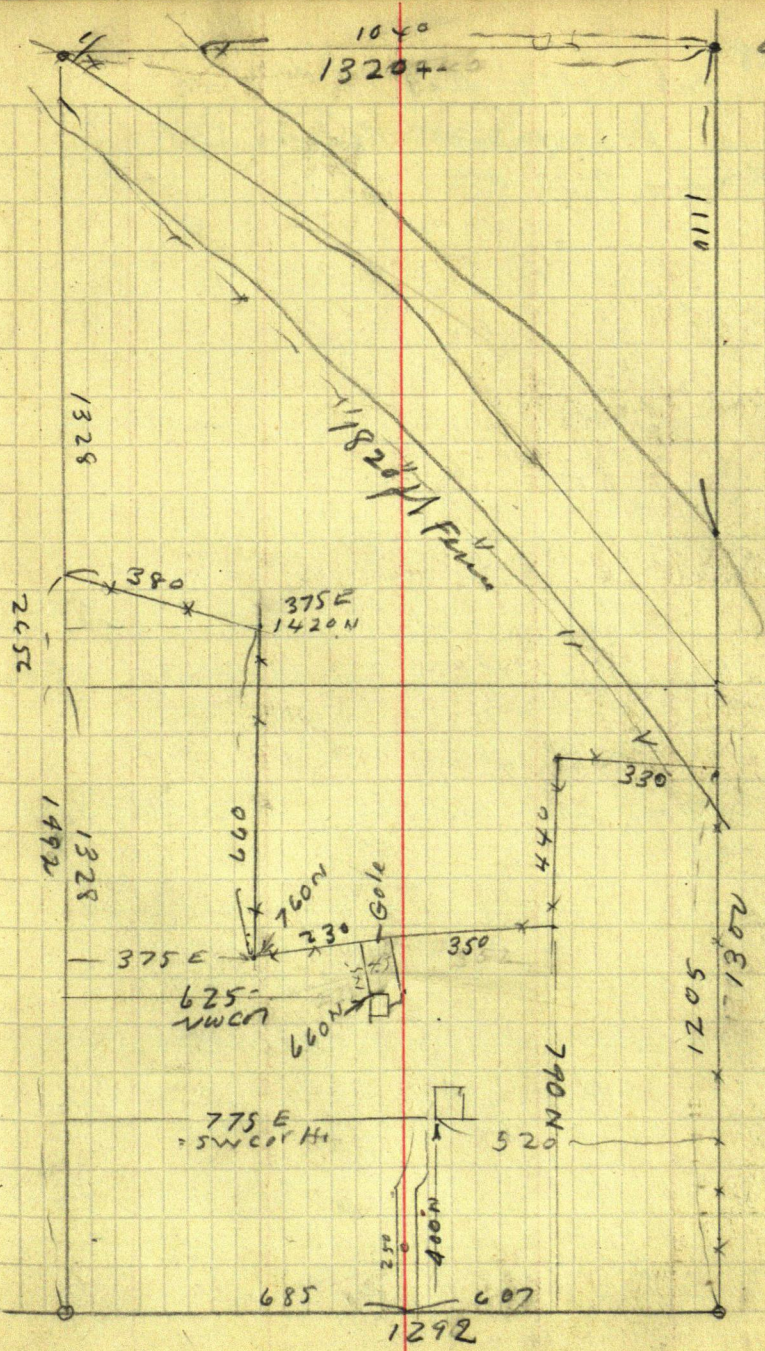
685

1292

1205
1302

790 N

607



48

Oct 7-1939 Sat 1-pm

DeLury Trial Recess till

Monday 9-30 AM

Oct 8-1899 Sunday

50

Oct 8-1939 Sunday

①

John W. Gore &
J I Babcock ch Geo
Harold J. Gore
ent

Point	+ BS	HI	- FS	Elev
BM 1	2.66	102.66	6.67	95.99
BM	4.95	100.94	0.94	95.99
				100.00 OK

47

Point	+ S	HI	- S	Elev
BM 1				100.00
	0.94	100.94		
+ 20				100.80
- 30			2.8	98.14
48			0.50	100.14
			3.64	97.30
			3.85	97.09
49			1.25	99.69
			4.64	96.30
			4.80	96.14
50			2.45	98.49
			5.65	95.29
			6.00	94.94

97.30

96.30

95

Z

9599

102.66

51

495

6.67

100.94

95.99

assumed RR Spik so shoulder slo 48
 RR Spik so shoulder @ slo 52

BM 1- π perfect adjustment

RR Spik So Shoulder Slo 47 + 2.0

Q Road

Bottom of Culvert Facing E $\frac{1}{2}$ E end

Q Road

Ditch R

" L

Q Road

Ditch R

" L

Q

L in ditch

R

52

Point	+	HI	-	Elev	
51		100.94	3.48	97.46	
			6.84	94.10	94.10
			8.00	92.94	
52			4.20	96.74	
			8.04	92.90	92.90
			8.96	91.98	
+ 50			4.70	96.24	
			8.94	92.00	92.00
			9.91	91.03	91.03
53			4.60	96.34	
			8.44	92.50	92.50
			7.94	93.0	
54			4.88	96.06	
			8.94	92.00	92.00
			7.45	93.49	
55			5.10	95.84	
			9.14	91.80	91.80
			7.25	93.69	
TP 1.		OK	6.24	94.74	
56	4.20	98.94	3.1	95.84	
			6.64	92.30	92.30
			5.70	93.24	
57			3.3	95.64	
			6.84	92.10	92.1
			6.0	92.94	
+70			6.34	92.60	

100.94
 620
 9474

9474
 420
 9894

53

Q Road

✓ R in Ditch ✓

L " "

Q Road

✓ R Ditch ✓

L " "

Q Road

R. " ditch S end Culvert Culvert

L. Bottom of Culvert Culvert

Q

R. in ditch

L " "

Q Road

R. Ditch west end of water in ditch

L " "

Q Road

R. Ditch in water

L " "

RR spike in S of R Shoreline of road to S

Q Road

R. in ditch

L " "

Q

R " "

L Culvert to E Culv

54 Point	+ S	H1	- S	Elev	
		98.94			
58.			3.7	95.24	
			6.98	92.00	92
			6.5	92.44	
+70			7.63	91.30	C/vt
59			3.9	95.04	
			7.8	91.10	91.1
			7.5	91.44	
+50			8.94	90.00	C/vt
			8.88	90.10	90.1
60.			4.0	94.94	
			8.4	90.50	90.5
			8.3	90.64	
61			4.1	94.84	
			7.8	91.10	91.1
			8.1	90.84	
62			4.2	94.74	
			7.7	91.20	91.2
			7.9	91.04	
63			4.2	94.74	
			7.72	91.20	91.2
			7.33	91.61	
TP2			4.45	94.49	

98.94

445

9449

55

Q Road

R in Ditch

L "

R. E End Culvert in bottom

Q Road

R in Ditch

L "

L N End Culvert at base 90 Culv

R Culvert E. End at base 90.1 Culv

Q Road

R in ditch

L "

Q Road

R in ditch

L "

Q Road

R in ditch

L "

Q Road

R Ditch in water water

L "

R R Spikes in So S shoulder = 51 64

Point	+ -	H _i	- s	Elev
				94.49
64	5.57	^{100.06} 110.06	55.2	94.90
			8.7	91.30
			8.1	91.96
65			5.0	95.06
			8.3	91.76
			7.9	92.16
66			4.5	95.56
			8.0	92.06
			7.7	92.36
67			4.3	95.76
			7.77	92.29
			7.44	92.62
68			4.4	95.66
			7.6	92.46
			7.2	92.86
+50-			7.1	92.96
69			4.1	95.96
			7.0	93.06
			6.7	93.36
70			3.8	96.26
			6.8	93.26
71			3.5	96.56
			6.7	93.36
			7.1	92.96

9449
5.57
100.06

57

Q Road

R Ditch

L "

Q Road

R Ditch

L "

Q Road

R Ditch

L "

Q Road

R Ditch in water only a little water

L "

Q Road

R Ditch

L "

50 ft R in field

Q

R Ditch

100 R

Q Road

R Ditch

Q Road

R Ditch

100 R

58 Point	+S	HI	-S	Elev	
		110.06			
72		100.06	3.1	96.96	
			6.5 7.5	93.56 92.56	93.6 92.6 92.6
			7	93.06	93.
73			2.5	97.56	
			5.8	94.26	94.3 94.2
74			1.9	98.16	
			4.6	95.46	95.5 95.4
BM 2				93.92	
			6.14	103.72	

Taking Swamp 14

68	8.5	91.56	91.6
67	9.0	91.06	91.0
66	8.9	91.16	91.2

Out at 3 PM

Harold

Bob

JWC

adjustment

JWC

Bob rod

out 8 sundown pen

Buff & perfect

- 14 Philadelphia road

Oct 8-39 Cnd

110.06

6.14

103.92

(59)

Q Road

R. Ditch

100 R in Marsh

Q Road

R. Ditch

Q Road

R Ditch

64 Nail in ^{W. end} 8" T. L. P. L. 50' to S. to 68+20

100 L

250 L

300 L

60

DeLury Trial

Walker Minn

Oct 9 1939 Monday

Up @ 6-AM - Raining
Drive to Ct Ho

Pour over figures

No breakfast - 9.06 still
waiting for DeLury

Court is to be called at 9-30

Worked all night on
figures

Do not use my maps

Wait all AM + PM

but am not called in Ct
Room PM.

Martha and I go to Jackson