

33

Watertown
Twp.

137-27

33

A. L. Stimmons

18-137-27-

Mar 24-1925

Herold - Seckel

600.2

760.1 H₂O

920.3 H₂O

1024.5 H₂O 1024.2

1200.00

1320.65 H₂O 1320

1500.00 1570

1749.35 = 1748.6

1878.1 - 1878.9 H₂O

1902 cut Bank

1925 Ice 2643.87

3965.67 - 4125.60

4150 H₂O + H₂O

4251.6 H₂O

4535 T₂ 4551 B₂

4575 in - 51.

5000.00 continued on
Pg 76 Dec 19
1931

5003.20
2992.00
4995.20
5284.59

①

INDEX

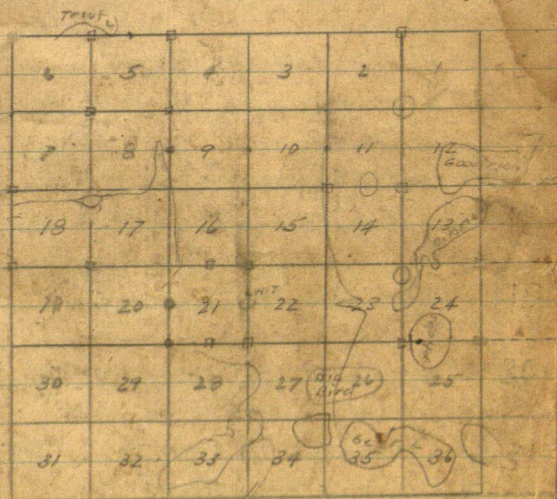
Watertown 137-27-

Cross Lake Road Survey

Maps 5-16-

US Nails 17-18-19-

" " Town Line 19



(2)

⁽²⁾
137-27

Road Survey

Feb 3-1925 Tuesday

I meet "Bill" Andrews at Jenkins and tell him I am going to survey Cross Lake road. Bill says -

O.K. etc. Also says I'm a good thing.

I go alone in my car drive Jenkins to Leggett. As my eye is too drawn out. Drive to Harry Gould place - Harry says Road Survey necessary.

Ericksen not in for I drive back to Goulds then to Butterfields - Then to Fritz Seckel place - back to Bill Stowe farm and home to Jenkins.

(3)

Feb 6-1925 Friday

Trinity Town Board met
at Hall in Cross Lake

I telephone from Jenkins
to Walter Murphy at Board
who says survey is
necessary

I go alone - drive to Cross
Lake Pick up

thence to Town Hall meet
Sam Adair - Trimmald
+ Riff

Town Board appoint me
to survey road to begin
Monday

Feb 7-1924 Sat

at Jenkins cut wood

④

Feb 8-1925 Sunday

All am in Jenkins

PM

4-30 I and my car take
Alma Reed - Harold and
Miss Hypatia Rouse

to Jenkins 4-30

They take me to Fritz Seckels
place - to me and go back
to Jenkins

Feb 9-1925 Monday

Start survey

HG Butterfield walks to
Seckels at noon

Fritz and I cut and
widen out Knutson's
line from Co. to

5-6-7-8-137-27

South at bear 7-8-

Dinner with Seckel

137-27

5

Feb 9-1925 Continued

PM

South let 7-8-137-27

π @ 100m balt set by Knudsen
 & lake New B TS - 5-6-7-8-

by Turned from line line
 Looking North

Pap 3"N 43°10'E 25.50 old spot
 at base

Oak 5"N 24°30'W 41.60 new.
 spot at base

Oak 3'S 44°10'W 14.70 FT

Oak 6'S 36°30'E 23.20 ft

Turned from line line
 North. Use back end of ch.

300.00

274.30

25.50

300.00

276.80

23.20

300.00

258.40

41.60

300.00

285.30

14.70

5-6-7-8-

Knudsen's
 line line

True
 N
 S

Sun

0.37

(6)

137-27

BS N on true line and run

S $0^{\circ}37'W$

South random bet 7-8-137-2)

300. stake in snow +68 =

368. & new graded trap
road E-W 600. sth

660.70. a R.R. rail 1 m set by

Co Surveyor Knudsen last

Fall's sth West. 0.30 of a foot

7.93. 80 rail in E edge

4" oak stump 900.00

900 stake 106.20

1025. set small 793.80

Hut 0.20 E of Knudsen's old

hut. 1319. 10.40 set small

pin 0.30 of a foot E of Knud-

sen's 1 inch run pin B TS To

Imm- by Set by Knudsen

4" Oak stump 3 ft th

S. about $20^{\circ}W$ 6.50. Ft12" N Pin N about $85^{\circ}E$

13.40 ft. @ 1400 So. lute

sand shore Rush Lake

Feb 9. cont'd

1978.30
17486.
129.70

1500 stake 1510 L (NW-SE)
Note: Lake extended about
60 ft West in Hi water
NW-SE 1800 stake 1800.00
1748.6 Hut 51.4
Ties up 1748.6

1800 stake: 1878.30 a
one inch iron pin set by
Knudson sets one (1) inch
West Ties to IMA Vij
Oak St 3" S about 10° W 5110
NP 11" S " 85° E 17.60
To flat spot at base marked by
Knudson

40 ft N of Hi water mark
Quit for night
Butterfield and I stay
with Fritz Seibert
Mrs Fritz (Emma)
Seibert.

Feb 10-1925 TUES

Colder - sunnier

Continued

South Bet 7-8-187-27 Raulon
1800 - slake 1878.30 3m

1920 So Hi water mark Hot Lake

2100 - 2400 - 2700 - 3000 -

slake in Hot

3018.90 Hubon in

3300-3600-3900 sth in

4140 Enter NE cor Island

N-3. @ 4200 slake

4251. Hubon Island 10 ft

W of E edge hi bank 10 ft

$4200 + 100 = 4300$ slake

5 ft W of E edge of Island

Thence along E edge

sharp bank 10 ft hi

$4300 + 300 = 4600$ slake

on sand beach - 40 =

4560 S - The Extreme

SE pt of hi bank of Island

4650 enters ice Rush L.

Feb 10 - 1925 Could

4900 - 5200 - sth on in

5500 stake on sand L. lake

$5500 + 120,10 = 5620,10$

Hub on Island.

Cut brush S. of Rush L.
and Quit @ 4-30

Walk home strong NW
wind 10° above.

ground open till 5 PM

Butterfield and I
with Seckel

Feb 11-1925 Wed

Fritz Seel - (Working for
Hunted. Arnold 25 yrs
old) H G Butterfield
(Working for Ed. about 25)

Clear bright sun
No wind not cold

We walk a mile to
Big Cement Monument
set by US Engineers
Robertson & Co.

17-18-19-20-137-27 etc

North along my old
random line run

(See Stinson - Robertson
Aug Sept 10-1924 pg 85
Book 13) (213?)

Check that weather
stakes up

1605
1355
345

(11)

Hub
Calat.
Feb 11-1925

Calc
Hub
Sept 10-1924

North Bat 17-18-137-27 ~~P~~

300.	300.10
600. =	600.20
900. =	900.55
1200 =	1200.80
1500 =	1501.08

1665 about Curn -

new Road E-W

1800. =	1801.25
2016.2 Hub	2015. ^{Hub}

1811. Curnaled road

NE-SW-

2016.2 + 151.9 =

2168.1 = 2167.

= Picket on old road

Triangulation Pt

old Survey

2016.2 + 184 = 2200

entire is in top NW-SW

2016.2 + 300 = 2316.2

stake in cat lairs.

(82)

137-27

North bet 17-18.

 $2316.2 + 300 = 2616.2$ Slake N

in cat tails on ice

Lv 6-7 ends open ice

 $2616.2 + 154.9 =$

Cold

Hub

 $2771.1 =$ 2770.21

old triangulation

hub 25 ft N. of ice

 $2616.2 + 244.6 =$ 2860.80 Hub Mhd 2859.9 $2860.8 + 140.2 =$

old

 $3001.0 =$ 8th Mhd 3000 $3001.0 + 260.5 =$ 3261.50 old Hub $3001. + 300 =$ $3301. =$ Mhd 3300 $3301. + 300.2 =$ 3601.2 old 8th Mhd 3600 $3601.2 + 149.9 =$ 3751.1 old Hub Mhd 3750 $3751.1 + 112 =$ $3863.$ fit on old erosion

sand beach

4651.1

2.7

(13)

Feb 11 1925 cont'd

4648.4

$$3751.1 + 248.9 =$$

4000.0. N. Hobonice

$$3751.1 + 300 =$$

4051.1 N. Hobonice

$$4000 + 300 = 4300 \text{ on ice}$$

Dinner with Buckel

3751.1 Van reads 8'30"

$$3751.1 + 300 =$$

$$4051.1 \text{ N. Hobonice} + 300 =$$

$$4351.1 + 300 =$$

$$4651.1 \text{ N. Hobonice}$$

$$4651.1 - 2.70 =$$

$$4648.4 \text{ Hobonice}$$

N. 55°30' E

T @ 4648.4 Iron at base of

Figures on SW side of old

USBT beam N 55°30' E

181.85 Ft

Van reads 8'20"

Tower Iron at BT Van reads 8'

when I look right at 55°30' beam

but 4648.4 Buckel fine

Figure 2. 3-10 pm. Bay

55°30'

$$\sin 82413 \times 181.85 = 149.87 \text{ E}$$

$$\cos 56641 \times 181.85 = 103.00 \text{ N}$$

N 56° E along US BT

$$\sin 82904 \times 26.4 = 21.89 \text{ E}$$

$$\cos 55919 \times 26.4 = 14.76 \text{ N}$$

US Niles say

E
149.87

21.89

127.98

about

N
103.00

14.76

88.24

At 4648.4 N US MC is
about 88.24 N & 127.98 E

Minus however the difference
bet true line and my random
Let's see -

$$4648.4 + 88.24 = 4736.64 \text{ N}$$

$$149.87 - 21.89 = 127.98 \text{ E}$$

$$4736.64 \text{ into } 127.98 =$$

$$.02702 = 1'33'' \text{ about}$$

Compare needle in transit

reads 8°00' set it 1°33' lower

6°27' set pt from C. on so

137-27

(15)

Feb 11-1925 cont'd

To put in M.C. To E.M. at old
S.B.T. Patch sight S 55° 30' W
on Hat 46 48.4. Then turns
1° 33' R and chain 26.40 ft
and set 1X6" Hat in snow
on info line M.C.

Then I check it with
needle at 6° 27' W and
split the corner O.K.

Looked getting my meat and
getting reading glass
from Jenkins.

Then I carry transit
back set over Hat
46 48.4 B.S. 5 on island
True M.C. bears

N 55° 11' E 155.55

We then carry transit north
and set over Hat 56 20.10 S

True M.C. bears S 4° 42' W
213.80 ft

16 = 137-27 Watertown Roads
Feb 11-1925 Contd

S $4^{\circ}42' W$

Sine $08194 \times 213.8 = 17.52 W$

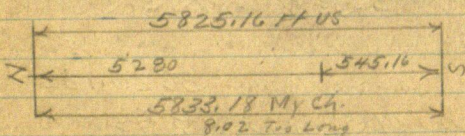
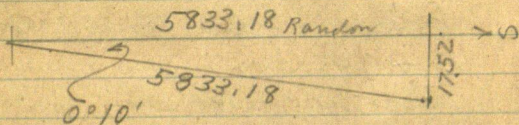
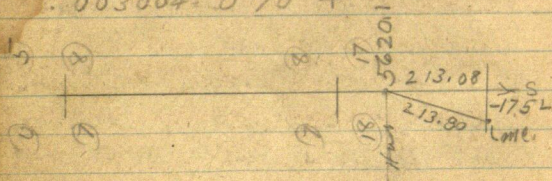
Cosine $99664 \times 213.8 = 213.08 S$

$5620.10 - 5 + 213.08 = 5833.18 S$

MC. Sub West 17.52

$5833.18 \text{ mile } 17.52 = .003004$

$.003004 = 0^{\circ}10' +$



See Page 21-

US Notes - 137-27

Feb 12-1925 Thursday

North Bet 17-18 - Lat $10^{\circ}30' E$

3200 Marsh E-W

40.00 Set $\frac{1}{4}$ Bet 17-18

SP5N14°W76 =

NP 7S 65° E 71 =

6133 Set MC So Ann Rush Lake

NP 12849 1/2 W 18

NP10N4 1/2 E 28

7174 Set M.C. N Side of Am Bush

Qah 4 N 36° W 39 =

YP10N 56°E 40 = 26.40 FT

8000 Cor to 7-8-17-18-137-27

$\text{Oak } 3N \ 43\frac{1}{2} \ E \ 13 =$

$E 1 m 5 N 36^{\circ} W 34 =$

WP. 10 S 19 1/2 W 13 =

$E/m \quad 35 \quad 46 \quad E \quad 26 =$

East Random bet 8-17-4 10 1/2 E

737 LK3 Temp MCW Sid Rush Lake

4522 E

6654 Temp MC, W. Side Ann Canal.

US Notes 137-27

7988 indirect N-S-line at point
for Co 8-9-16-17-in lake
West line line bet 8-17- $\vee 10\frac{1}{2}' E$

1334 MC. W side Arm Cinn Lake
Elm 35 58 W 12-
Maple 5 N 5 W 56-

3466 MC. E Side Rush Lake
YP 9 S 4 E 43
W.O. 10 N 27 $\frac{1}{2}$ E 18-

7251 Set MC W. Side Rush Lake
WP 3 S 4 $\frac{1}{2}$ W 13
Elm 3 N 22 W 17

7988 Cor 7-8-17-18- 137-27

West Random bet 7-18- $\vee 10\frac{1}{2}' E$

2.77 Temp MPE Side Arm Rush L

2017 " " W " Same arm

4451 " " W " " "

7985 indirect 25 Lks S

East True Line bet 7-18 $\vee 10' 19' E$

3534 Mark WP 6" Diam for MC.

W. side arm of Rush Lake

WP 10 N 30 E 14-
YP 6 S 40 W 31-

5047 Set MP on NE Side Same Arm

YP 8 N 67 $\frac{1}{2}$ E 54-
Elm 14 S 80 E 48-

Feb 12-1925

137-27

cond

U S Nails

5968 S. A. M. C. On Sam Ann Rush L.

Elm 16 N 55 $\frac{3}{4}$ W 80. No Other

7708 M. C. On E Side Sam Ann

B. Ash 10 S 55 $\frac{1}{2}$ E 90

7985 Cor to 7-8-17-18- 137-27

North But 7-8- V 10 $\frac{1}{4}$ E

156 S. A. M. C. S. Side Rush L.

WP 10 S 15 W 170

Elm 35 42 E 182

844 S. A. M. C. N Side Rush Lake

Pine 9 N 69 $\frac{1}{2}$ W 326-

Oak 10 N 53 E 117-

2039 S. A. M. C. S. Side Lake

YP 12 S 25 W 35-

" 9 S 80 E 23-

4556 M. C. N. Side

YP 12 N 34 W 31-

" 9 S 80 $\frac{1}{2}$ E 108-

8000 Cor 5-6-7-8- 137-27

(Note: See Michener Survey

nails for Cor 5-6-7-8- cur)

Town Line SW Cor 18-

JP 7 N 74 E 38 = 251.00 190

JP 16 S 78 E 74 = 48.84

JP 12 S 28 W 77 = 50.82

JP 6 N 82 W 27 = 17.82

$\frac{1}{4}$ W Side 18

JP 4 S 22 E 12

" 3 N 77 W 21

9° Var See Pg 32 = SW Cor 7.

22

137-27 Watertown

Old Jenkins - Cross Lk Co Hotel

Feb 12-1925 Thursday

Snowing lightly will stay
in this forenoon no work

Last night we had company
and midnight lunch at
Seckels 3-car

"Levie" Johnson and Wife Clk
Ideal Turp See 22-137-28
no kids.

L.T. "Louis?" Clarguist and
wife Emmy and 5 kids (Son
in law of Fritz Seckel)

Johnnie Hanson & wife - 2
kids. also Old Lady Hanson

Arnold Seckel got in at
11-30 midnight with two
new wolf hiders - just caught.
Pearly went home at
11 am.

Boyer and his wife and son
come over

Butterfield & Arnold to
Cinn. 10 h. and back over

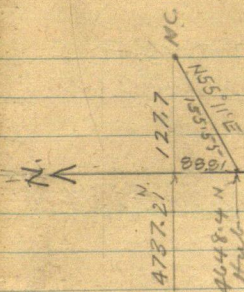
Feb 12-1925

137-27

21

Cont'd

Figuring



N 55° 11' E

$$\sin 55.18^\circ \times 820.98 = 127.70 \text{ E}$$

$$\cos 55.18^\circ \times 820.98 = 88.81 \text{ N}$$

At 4737.21 N - mer. Act. 5 E 127.7

90° to random

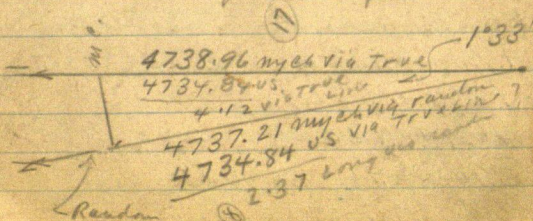
Correction

$$4737.21 \text{ into } 127.70 = .026957$$

$$.026957 = 1^\circ 33'' (1^\circ 32\frac{1}{2}'')$$

But 17-18-

.026957 E for each foot N.



Feb 12 - contd

Driver with Seibel - PM. Still

Figuring 1°33'

Sine - .02705

cosine, 99.963.1116 4737.21 = 4738.96

But Dec 17-18

4734.84 Ft US = 4738.96 My Ch

4734.84

4.12 long

= .99963 My Ch = 1. / US ch

Try this

5284.59 my ch →

?

545.63 | 4738.96 my ch

545.16 | 4734.84 US

4.12 long

99963 into 545.16 =

Note:

Experimenting ? above

4734.84 US into 2.37 = .0005

1320 + .66 = 1320.66

2640 + 1.32 = 2641.32

3960 + 1.98 = 3961.98

5280 + 2.37 = 5282.37

Via Random

To estimate length of line

But 17-18-

$$4734.84 \text{ mils } 4.12 = .00087 \text{ }^{OK} \text{ long}$$

long in each foot via Truoline

$$4734.84 + 4.12 = 4738.96$$

$$545.16 + 0.47 = 545.63$$

$$OK. \quad 5284.59$$

Note:

Using the proportion of the S.
mils to fix the SW Cor Sec 8

$$5833.18 \text{ minus}$$

$$545.63 =$$

$$5287.55 \text{ S}$$

So that at 5287.55 So over
corner would be E & W.

Using the proportion of the N
mils to set SW Cor sec 8
proportion = 5825.16 mils 8.02
= .001377 long in each foot so
.001377 So for each foot so

$$5280 \text{ So would go } 57.27 \text{ T.}$$

5287.27 So !!! What you know
about that. OK OK OK OK

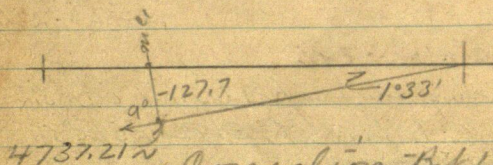
Use run back only. 28 ft 128

24

Feb 12 contd

Note

We will use the South Mile
 passing our line thro MC,
 and extending same to pt
 near 5287.55. South 015.
 Feet?



Correction Bet 17-18
 .026957 E for each ft N

+ 1320 N on random goes N. 66

+ To 1320.66 Then E 35.60

+ To S $\frac{1}{16}$ Bet 17-18

Hub 1501.08 N goes E 40.46

X 2016.2 " " E 54.35

2640.00 + 1.32 = 2641.32 N

E bet 71.20 To $\frac{1}{4}$ bet 17-18

2771.1 N goes E 74.70^{OK}

V 2860.80 " " E 77.72^{OK}

V 3261.50 " " E 87.91^{OK}

3751.10 " " E 101.01^{OK}

AD 1928
.026957 E

25

4731.21 N goes E 127.7
T.O.S. m.c.

3960 N goes N 1.98 to 3961.98
Then East 106.80 T. Nth 1/16
Bet 17-18

Figuring 1°33

Cosine = 99963

into 1320.66 = 1321.15

Checking

5284.59 N.

5287.55 S

10.572.14 Total OK.

also

4738.96 N T. m.c.

5833.18 S T. m.c.

10.572.14 OK. Total

4) 5284.59

1321.15 - 1320 very close to 4
miles

2771.1
2641.32
129.78

137-27
US Valis

16-17-20-21-137-27
North bet 16-17 \vee $9\frac{3}{4}^{\circ}$ E

Run on ice

4277 M Port N side Cross L

B. $\frac{1}{2}$ P. 16 N 40° E 15° W 25°
10 N 41° W 25°

5044 Daggett Brook Run W.
x x

7840 MKd W. Ash 6" Diam

For M. Co on Cross Lake

run on ice

Y P 6 N 50° E 20° W
11 12 S 7° W 28°

8000 Ptfn Cor 8-9-16-17-

East random bet 9-16 \vee $9\frac{1}{4}^{\circ}$ E

.21 Act Temp MC on E side
Cross Lake

4000 Temp $\frac{1}{4}$

6175 Temp MC W side
Daggett Lake

8082 incline Cor T.
9-10-15-16

West on True line bet
9-16- \vee $9\frac{1}{4}^{\circ}$ E

2707 Act MC N side

137-27

27

Feb 12 - Contd

4 Daggett Lake

J P L N 3 E 19

Bn Oak 6 S 54 W 65

4041 At 1/4

Y P 20 N 4 E 42 =

" 17 S 13 E 76 =

8061. At MC, E side Cron Lake

Y P 7 North 9

E 10 S 7 South 10

8082 Cor 8-9-16-17

North Bet 8-9 Var 9 1/4 E

2121 MC N side Cron Lake

Y P 9 S 38 E 52

No other

4000 At 1/4

Y P 15 S 87 E 68 =

" 15 S 14 W 51 =

8000 At Port 4-5-8-9-

Y P 14 N 67 E 139 =

Y P 24 S 54 E 284 =

Y P 18 S 48 W 132 =

Y P 10 N 37 W 170 =

X X X X

South True Line Bet 4-5 V 9°

1000 At MC N side Lake

W P 15 N 19 E 51

Y P 18 N 56 W 36 =

4661 MC S side Lk

W B. 65 1 E 78

" " 55 46 W 53

8000 Cor - 4-5-8-9-

⑦

1320.66

132064

13, 20, 46

20, 16

1320.46	1320.46	5284159	7100
		1321.15	1321.15

132115	132115	132115	132115
--------	--------	--------	--------

137-27

29

6027

5284.59
o.k.

1321.15
1321.15

17

osm c

1321.15

NY
1321.89

5287.55

1321.89 - 1321.89 - 1321.89
o.k.

264378

Em

8

1317.85

213570

1317.85

Time Sheet

Watertown Twp Road Around N End Cross Lake	
SON	SON
8	24
9	30
10	17
11	18
12	19
13	20
14	21
15	22

Feb 1925

John W Curo @ 8/15

Car 053.

Expense

Ed Butterfield @300

Arnold Seeley

Thalid

Ed.

SUN	MON	TUE	WED	THUR	FRI	SAT	SUN
8	9	10	11	12	13	14	15
16	17	18	19	20	21	22	23

Feb 12-1925 continued

Beautiful warm day Bright
sun except 30 minutes this
morning. Spigars like hell
all day

3751.11
211
3962.11

4000
3961.98
38.02

Town Lines

US Natl. See Page 19.

SW Cor Sec 7-137-27

YP 10 N 48 E 24 = 15.84

" 13 S 8 E 33 = 21.78

" 10 S 57 W 19 = 12.54

" 12 N 28 W 13 = 8.58

Feb 13-1925 Friday

Caldie - zero - NW wind

HG Butterfield and Arnold Seetoh
go with me to Island where
Arnold takes letters to mail
box half a mile SE. HG builds
a fire and I adjust lantern
on side of island out of the
wind - L @ 8-30 AM.

Correcting

At Hat 4000 N we change

↑ 38.02 ft to 16 3961.98 N set
Hub on ice. Tower 3961.98

Turn 90° to random and
Ch East 106.80 ft and set ft

↓ N 1/16 Cor Bt 17-18-137.2

We set tower Hub 3751.11

Turn 90° and run East 101.11
ft and set one inch hub
on line line 211.

As of N 1/16

84 4728 4738.76 300
 219.5° 81
 4957.96 219
 4738.76

Also Vaj: ^{van} From True Line 4636

4" Oak N 44° 40' W 11.95

3" " S 45° W 38.20

Transit over Corrected Hub
 3751.11 Set stake 60 ft. from
 line line

Transit telescope Focus
 on light MC. and cut line
 North across Island

Get Allen corner along
 Linn with Level

P.M.

Early Corner barometer and
 height Butterfield and L

X @ 3751.11 N Focus from
 MC set Hub at center of
 Island and on line line

219.5 ft North of True MC
 Hub 219.5 4958.96 N

Tree Vaj:

10" meph S-about 80° E 22.5

5" " N " 10° E 20.45

We also pull up the 1 x 20 inch

Watertown Twp 137-27 35

Feb 13-1924 Contd

line set by Art Allen and I
temporarily lost gear and
placed it on line line 100 ft
N of line MC.

= 4838.96

H. N. This Book
pg 76 New B.T.
see pg 104 Bk 22

At a point 293.24 ft N.
of MC = 5032.20 ft.

drive 10d nail 3/4 inch
West of the heart of an 8 inch
green hard Maple stump
300 N of MC set pin.

50 ft N of pin

300 + 245.63 = 545.63

N. of US MC. and 5284.59

Ft N. of Cement See Corner
set true Cor on ice to See

7-8-17-18-137-27

Chap match in ice and set
6 ft picket for line corner
in snow mound.

On East random going
South. at Hut 5620.105

Tier V_{ij}

Maple 10 S - about 80° E 3.15

" 4 N " 10 E 21.00

Hut ^{4958 N} 5958 on true line going
North, bears N 71° 45' W

19.30 feet and ft on true
line bet sec 17 and 18

about 6 ft S of Hut ⁴⁹⁵⁸ 5958ⁿ
is 18.30 ft West

Figuring & chaining
Random Line bet sec

7th & 8 - going South at
4600 S - it is 22. ft West to
True line bet sec 17th & 18
extended North on its post
point for corner
and at

5287.55 So True Corner 1.8 S.

7-8-17-18 on its bear
West 19.50 ft

and at

5620.10 So it is

18.30 ft West to true line

137-27

37

Feb 13-1925 cont'd

at a pt about 6 ft so of hub

5958 N - on line line bet 17-18.

Walking to we set small
hub + correct line bet sec

17-18. Corrected or shown

On Pg 24²⁴ 25 Checked Thru &

At 2745 N - on random Ickel
find air hole at edge of ice and
throw out 8. Bull heads with
my ax. H.G. Butterfield gets
one foot wet to his knee and
goes home half an hour ahead
of Fritz and I who work till
dark.

I attempt to set $\frac{1}{4}$ bet
17- and 18 but figure 100 ft
to far N. and quit till
morn'g for cold NW wind
10° above. Still with Ickel

137-27

39

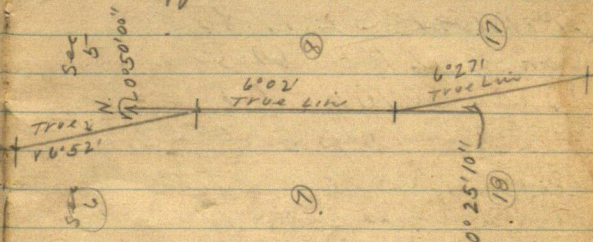
Feb 14 - Contd

Figuring Bet 7-8-

5288 mls 19.50 = .00369 = $0^{\circ}12'40''$

1020 " 3.70 = .00363 = $0^{\circ}12'30''$

Total Diff bet true Line $0^{\circ}25'10''$



Arnold Pocket gas with
 46 Butterfield and I L
 8-30 Cold NW wind 10° above
 No current line at all
 places under x' Hg 24-25

1500.00	300.00
179.35	179.35
1320.66	120.06
	1200.00
	1320.66

Feb 14-1925 Contd

At 1320.66 N alt Hut Run 90° E

35.60 Alt 1x1x6" oak Hut f

True S $\frac{1}{16}$ Bt 17-18-137-27

SP 4 N 47° 45' E 17.85 ft

Oak 3 S 52° 10' W 60.30

" 4 S 50° 10' E 71.40

Turn 3° oak stp S 50° E 2.45

to flat spot at base turned

from line line 10-45 AM

Then cut line not over

new road on line see

line till stage comes

Hide lantern 3 steps N

of a 10 inch dry tall Jack pine

club about 150 ft E of $\frac{1}{16}$ c.

11-15 AM - Seckel and

Butterfield start for

their respective homes

I stake out (roughly)

a mile of road west

stage overlooks me

and leaves me at

137-27

41

Feb 14 Contd

Stocum's where Reed
and Alma meet me
with my car
Stage 75¢.

Alma & I to Pequot
back home to Jenkins
for night.

Bullerfield of Crest.
85 To Alma

Ch 825. To Lumbdale
81. To Herald.

Feb 15 - 1925 Sunday
All day at home in
Jenkins Cold NW
wind 25° below

Jahn W Curo

Feb 17-1925 Tues

I, and my Ford
 L & Jenkins 8-9 AM.
 drive to Seckels where
 I pick up H & Butter-
 field and Fritz Seckel
 and we drive back
 on ice to R.R. Bridge
 and stake out angle pt.
 of a mile of road west to
 town line Lath & Paul
 paper caps

Lath 35¢

Paper 10¢

Tax 5

50

In at 11-35 AM and I
 figure till noon dinner
 with Seckel.

PM

L & C 1-15 interest & road with
 line see line at 17-18-137-22

369.70 ft in 18 1/16 in

44

137-27

1" Hat 1 p.s. of N wheel track
JP 4 S 62° 17' E 65.65

Oak 4 S 34° 50' W 61.65

S 60° 05' W 320.3 1. AP A

AP A Oak 10 N 71° W 57.2

JP 4 S 34° 40' E 27.2

Thence N 54° 51' W 684.3

@ 100 about - E end of Dyer

@ 600 " " W " " "

684.3 AP N B (B) p. 56

JP 10 N 36° E 35.6

JP 9 N 42° 20' W 27.6

72 ft from road

S 81° 14' W 209.8 T. AP. (C)

To Sta 209.8 from road 6' (C)

pt of 3 roads. Not hit B or C

roads says 15 ft N

JP 11 N 74° 40' W 38.5

JP 8 S 10° 10' E 33.3

137.27

45

S 35° 46' W 398.70 T. 17 P N D

$\pi @ D = 398.7$

JP 10 N 80° 30' W 29.10

Oak 10 S 30° 10' W 40.75

In road 6° 40'

3/10 E / road in

S 57° 56' W 377.80 T. E

$\pi @ E = 377.8$

JP 9 N 33° 40' W 33.2

6° 40'

JP 7 S 38° 40' W 18.90

6° 50'

S 89° 13' W 510.10 T. F

$\pi @ 510.10 - F$

6° 30'

JP 5 N 64° W 15.6

Buck 6 S 18° 30' W 22.50

5/11 N / road

S 76° 32' W 250 π @

6° 20'

$\pi @ 250$

JP 10 N 71° 30' W 15.00

JP 9 S 41° 45' W 17.30

15 foot ex liminal

18

Feb 17-1925 Cont'd

21'31"
522°12'W

15 "H."

ft

Henry Williamson and
wife call in evening
neighbor of
Jim McKeown.
McKeown.

owner of Silver Peak.

Bachelor 46 T. 45

years old works 18

years for N.Y. Tribune

was President of

Printers Union Picture

in "Daily Star"

McKeown's house.

Keeper 42. Mr

"Bezowski" Polish German

47

Feb 18-1925 Wed

6° above - snowing
lightly Ls in my car 8-30
HGB and Fritz

Tower again over G. rd
 S 21° 31' W 351.70 T. Ht. "H"
 in E road N brink of hill
 7° 10' N P 5568.30 E 23.9
 Oak 85° 17' 15 E 22.05
 1.7°

Town H. 2.6 2.6
S 13° 28' W 256.18 T. I
Oak 85 17° 15' E 22.05
GR 5- 568' 30" E 23.9

Being 6" postings 10 82
External NE of Road
NP 115 26 50 W 50 60
JP 5 5 82 50 E 53.90
V. near 6' 50'

48

137-27

Feb 18 cont'd 1925

Koua Slump @ T. Run

S $42^{\circ} 37' W$ 534.4

To "J." 6 ft. E of road

JP 6 N $86^{\circ} 30' W$ 31.60JP 5 S $22^{\circ} 10' E$ 21.90

V 7°

Koua J. Run

S $66^{\circ} 24' W$ 600 + 126.9 =

726.90 ft. T. K. 3 ft. SE

of road

JP 10 N $42^{\circ} 50' W$ 36.5JP 12 S $36^{\circ} 30' W$ 25.5

V 7°

Koua "K" Run

S $79^{\circ} 28' W$ 334.3 To L.

E road

JP 12 N $13^{\circ} W$ 23.80JP 10 S $41.30' W$ 30.10heads $6^{\circ} 40'$

To L" Run $S 89^{\circ} 40' W$ 1331.7

1250 +

131.7

1331.7

To corner

To Corner 13-18-19-24

T 137 R 27-28 where vs
valis call for (See P 942)

we find the S.E. stump
which was plainly marked
last fall when I was here
making the Almon survey
but some one has just lately
knocked off a part of the
top till now only a part
of the old marker show

from which I set a 60 ft
spike in north wheel track
of E & W road 7° var and
from which point an old
plain survey line runs west
New BTS Vj

NP $10^{\circ} N 23^{\circ} 41' E$ 191.55^{or}

Buck $2^{\circ} N 23^{\circ} 41' W$ 25.35

13-18-19-25-137-27-28

Tran Line = St^o M. = St^o 0"

New BTS Continued

SE Cor post of fence 6"

N 33° W 22.85

JP 2" N 79° W 71.45

JP 6 S 57° 35' W 112.0

Birch 5" S 55° 40' E 59.35

Old Stump of 16" N P. US-BT

S 78° E 48.84 ft

To flat spot at base of each
for a check

St^o L" Compass read line 7"
bearing N 89° 31' E 1331.7 ^{by} needle

Close check but this

course is really

N 89° 40' E 1331.7 ft 7.0

Correct coming from
the rest of the cord survey

Late dinner with Bechel

13727 Road Survey 51

Feb 18-1925 Cont'd

P.M.

I and my car take Seckel & Butterfield back to the Pm's River Bridge where we stake out E of road till 4-30 P.M. when I take H.G. home and bring Ed Butterfield back with me.

Supper & over night with Seckel.

Gurley Transit 300'
steel tape P.B. Ch.

Jahni W. Curo

52

13727
Walbridge Road Survey.

Feb 19-1925 Thurs

Fred Seckel. Ed

Butterfield and I in my car

Lv @ 9-30 and go to Sta

13. See Page 56.

131.95

Feb 19 - contd

Re-Numbering The Stations

Sta 0. = SW Cor Sec 18-137-27 (Mnd M)

60th Spike in N. Wheel leach

NP10 N 23° 41' E 191.55 Feet

Brick 2' N 23° 41' W 25.35

SE Cor Post Fence N 33° W 22.85

JP 2" N 79° W 71.45

JP 6 S 57° 35' W 112.

Brick 55 S 55° 40' E 59.35

Old OS BT Stp 5 78° E 48.84

N 89° 40' E 1331.7 To

Sine 99998 x 1331.7 =

Cosm. 00582 x 1331.7 =

70.1

Sta 1. & road (Mnd L Pg 48)

JP 12" N 13° W 23.80

JP 10° S 41° 30' W 30.10

(Vn Reads)
6° 40'

Run N 79° 28' E 334.30 To

Sine 98215 x 334.3

Cosm 18281 x 334.3

Sta 2. = 3' SE & road (Mnd KP, 48)

JP 10 N 42° 50' W 36.50

JP 12 S 36° 30' W 25.50

(Vn Reads)
7°

Run N 66° 24' E 726.90 To

Sine 91636 x 726.9

Cosm. 40035 x 726.9 =

54

Re-Numbering Stations

Sta 3 = 6 ft E of road (MKd J. P. 48)

JP 6 N 86°30' W 31.60 ^{van} Reads

JP 5 S 22°10' E 21.90 7'

Run N 42°37' E 534.4 To

Sine 67709 X 534.4

Cosine 73590 X 534.4

Sta 4. Stump 10 ft SE of (MKd I. P. 47)

NP 11 S 26°50' W 50.60 ^{van} Reads

JP 5 S 82°50' E 53.90 6°50'

Run N 13°28' E 256.10 To

Sta 5. Hub of road N bank of hill (MKd H. P. 47)

JP 5 S 68°30' E 23.9 ^{van} Reads

Oak 8 S 17°15' E 22.05 7'

Sine 23288 X 256.1

Cosine 97251 X 256.1

Run N 21°31' E 351.70 To

Sta 6. Hub 18 ft NW of (MKd G. P. 45)

JP 10 N 71°30' W 15. ^{van} Reads

JP 9 S 41°45' W 17.5 7°10'

Sine 36677 X 351.7

Cosine 93081 X 351.7

Run N 76°32' E 250 To

Sta 7. Hub 5 ft N of (MKd F. P. 45)

JP 5 N 64° W 15.6 ^{van} Reads

Buck 6 S 18°30' W 22.5 6°30'

Sine 97251 X 250

Cos 23288 X 250

Feb 19 - cont'd

55

Re-Numbering-Stations

RUN N 89° 15' E 510.10 T.

Sta 8. Hub 6 ft SE of \odot (Mkd E" P₉ 45)

JP 9 N 33° 40' W 33.2 ^{van}

JP 7 S 38° 40' W 18.9 ^{Reads 6° 40'}

Sine 99991 X 510.1

Cosine 013091 X 510.1

RUN N 57° 56' E 377.80 T.

Sta 9. Hub 3 ft SE of \odot (Mkd D" P₉ 45)

JP 10 N 80° 30' W 29.10 ^{van 6° 40'}

Oak 10 S 30° 10' W 40.75

Sine 84743 X 377.8

Cosine 53091 X 377.8

RUN N 35° 46' E 398.7 T.

Sta 10. Hub \odot INTERSECTION 3. Roads

E-W-SW (Mkd C" P₉ 44)

JP 11 N 74° 40' W 38.5 ^{van}

JP 8 S 10° 10' E 33.3 ^{6'}

Sine 58449 X 398.7

Cosine 81140 X 398.7

RUN N 81° 14' E 209.8 T.

Sta 11 - Pt 12. ft N of \odot (Mkd B" P₉ 44)

JP 10 N 36° E 35.6 ^{van}

JP 9 N 42° 20' W 27.6 ^{7'}

Note: Bet Sta 11 and 12 Normal

8099 15 ft N. P₉ 44.

Sine 98832 X 209.8

Cosine 15241 X 209.8

137-27 - Sec 18

RUN S 54° 51' E

@ 100 - ^{about} W. end of Dyke

@ about 600 - E. End of Dyke

@ 684.3 Hnt 0

Sta 12. pt 30. ft. SE of N 44° 1' 44"

Oak 10 N 71° W 57.2 v 7.

JP 4 S 34° 40' E 27.2

West end of new graded

True road - old road NE

SINE 81765 x 684.3 =

COSINE 57572 x 684.3 =

RUN N 60° 05' E following new
grade 320.3 ft 16

Sta 13, set 1" Hnt 1. ft S of v

where back of new grade

369.7 feet North of S 1/16

Cor and 1690.85 ft N. of

Sec on 17-18-19-20-137-27

and on True Sec Line

JP 4 S 62° 17' E 65.65 v 7.

Oak 4 S 34° 50' W 61.65

SINE 86673 =

COSINE 79874 =

Feb 19 - Cont'd

137-27 - See 17

37

Feb 19-1925 Cont'd

Beg @ Sta 13. Continue
on 2 new grads

N 60° 05' E ft f.

Sta 14. pt @ 1340 ft cross
old main road NW-SE
1596. ft T.

STA (14) PT 6 1/2 SE 1/2

Oak 7 S 78° 20' E 58.6

Oak 5 N 51° 30' E 81.30

SIN 86675 x 1596.

COS 49874 x 1596.

RUN N 33° 51' E

@ 100 intersect old road
coming from the South
from which point new
road follows old road
394.5 ft 1/2

SIN
COS

Sta (15) PT 6 1/2 SE 1/2

NP 10 N 63° 50' W 29.80

Oak 4 N 23° E 61.15

SIN 55702 x 394.5

COS 83050 x 394.5

58

Feb 19-1925 contd

Run N $5^{\circ}2\frac{1}{2}'$ W 332.70Sta 16. Pt 15 ft NW \angle Oak 12 N $79^{\circ}15'$ W 18.15Barwood 10 S $21^{\circ}10'$ E 54.85Sine $08774 \times 332 =$ Cosine $99614 \times 332 =$ Run N $25^{\circ}22\frac{1}{2}'$ E@ 157 W. end of fill and
fence

@ 264. West end of Bridge

@ 300 ft on bridge + 133 =

@ 434. E. End of Bridge

@ 467 E. end of fill

600 ft +

655.7 To

Sine 42841×655.7 Cosine 90358×655.7 Sta 17 Pt 15 ft N of \angle road $\vee 6^{\circ}50'$ W. Oak 10 N $65^{\circ}10'$ E 27.25Red Elm 7 S $12^{\circ}30'$ E 25.20Run S $77^{\circ}53'$ E 257.6 To

Sta 18. Snowing hard

to swimmer in Ford.

Sine 97772×257.6 Cosine $20990 \times 257.6 =$

pm

137-27

266.3

59

Sta 18 pt 6 ft NE E.

Mag 6.7 N 55° 30' W 34.80

Elm 12 N 55° E 19.10

V 6.48

Run S 60° 05' E

along NE edge narrow fill

206.10 to

SIN 86675 x 206.10

COS 49874 x 206.10

Sta 19 6 ft SW E

Elm 12 S 89° 10' W 38.0

Elm 15 S 40° E 20.6

V 6° 50'

Run N 64° 35' E 266.3

Sta 20. Laying out road

E to road 266.3

Sta 20 - pt 30 ft N of the Road

and 10 ft N of the road

100 ft N of the road

6° 30' Elm 10 N 10° 30' W 59.9

Oak 11 N 71° 45' W 64.05

SIN 90321 x 266.3

COS 42920 x 266.3

60

Feb 19-1925 cont'd

RUN N52°20'E along
best line for view E@150 we are 38 N of the bank
and 28 N of E road and

60 N of N side of ridge

At 300 we are 25 N & 30

S of the two banks and

12 N of wagon track &

At 400 we are 10 N of

E road 20 N and 35 S of

the two sides of ridge

At 600 we are 15 N of E road

25 N of the bank 75 S of low bank

At 700 we are 35 N of

the bank 25 N of E road 60

ft 20 of low bank which runs
and angles away from us here

45° away NE

At 681, P.O.T. = Sta 106+75.3

Basswood 10 N 13°40' W 61.15

Elm 5 N 82°50' W 47.50

For roads 7°

137-27 Roads

61

At 729 SW cor of street
is 10 ft N.

At 765 we are 35 ft N of E
and 50 ft N of the bank and
150 So of N side of ridge

At 900 stake 15 N of E and
25 N of the bank

At 1075 we are 10 ft N of E and
and 20 N of the bank

At 1200 stake 12 N of
E and 25 N of the bank

Sine 79158 X

613 61107 X

Quiet lake

62

137-27

Feb 20-1925 Friday
 Snowing lightly 10' above
 Arnold. Seckel and
 Ed Butterfield - also Fritz
 Continues

Road Survey

Tie in P.O.T. 681. as given on
 Page 60. Then continue
 $N 52^{\circ} 20' E$

$$1200 + 62.6 = 1262.6 \text{ T.}$$

Sta (21) $\sin 79158 \times 1262.6$
 $\cos 61107 \times 1262.6$

18 ft N. of hi brink 10 N 4 E
 Basswood 10 N 89° 15 W 50.7
 Maple 12 N 25° 40' W 60.85
 Van 7'

Run

$N 44^{\circ} 09' E -$

@ 200. ft. A is 18 ft to Hⁱ

Brink and in r wheel track

@ 293.7. T.

$\sin 69654 \times 293.7$
 $\cos 71752 \times 293.7$

Sta (22) pt 30 N of Hi. Crink
 and 10 ft N of E road
 Basswood 10 N 4° 35' E 63.4
 Oak 12" N 74° 15' W 68.40
 v roads 6° 30'

Run

N 33° 05' E

@ 150 it is 100 ft. S to low
 Lake shore

@ 244.9 T.

Sine 54586 X 244.9 =

Cosine 83788 X 244.9 =

Sta (23) pt 5 ft S. of E and 100
 N of low Lake shore
 Oak 6 N 28° 30' W 58.75
 Oak 12 S 78° 30' W 79.60
 v 6° 50'

Run N E

N 12° 3½' E

@ 30 ft - E road

@ 125 # 10 ft N of E 75
 N of low shore

64

Feb 20-1925 cont'd

280 to 300. E road

@ 280 we are 10 ft N of brink

@ 300 same

300 + 125 = 425

12 ft N of E road 18 ft from Brink

457. Groves road NW

475.8 To

SIN 20877 X 475.8°

COS 97797 X 475.8°

Sta (24) 8 ft N of E 25 Brink

NP 9 N 7° 45' W 66.25

NP 10 S 75° 10' W 71.50

Note

Run N 6° 43 1/2' E

@ 39. Groves old fence

4° 5' E of old road work

265 to 310 we are 10 ft N

of E of road and 20 ft S of

post hole used as a slope

post @ 600

519

@ 470 we are 6 S of E road

Brink @ 470 E road

519. To

Changed to N 3° E 400 to New Sta 25
Then N 18° 55' E 122.7 to 25 changed to 25

Note Sta 25 has no S to

Secs 8 & 17-137-27
old Co road

65

8/2 (25) = Chqd T. (26)

8 ft N 7 E and on round
top of ridge which slopes

75 ft N 6 E. probably and same

75 S to sand bank

Note: The road is

6 ft N 10 E

S 20° W 110 feet

Oak 5 N 16° 20' W 38.80

" 7 S 79° 20' W 38.15

7° 20' W

Sine 11646 x 519

Cosine 99314 x 519

Run - Following L. wheel Track

N 29° 25' E 338.7 to

Sta (26) in E road 25' E of

hi bank brink

Birch 5 N 28° 45' W 46.35

JP 15" S 71° 20' W 59.30

All B.T.S. to flat spot
at base

Var @ "26" reads 6° 50' E

Sine 49116 x 338.7

Cosine 87107 x 338.7

Changed from 24 to 24.4
N 3° E 400 P. 24.4
N 18° 55' E 122.7
7 (25) Chqd T. 26

Changed to
Pt (27)

Sta (26)

66

Feb 20 - Cont'd

Run N 7° 20' E. following
Left wheel track
359.5 ft to foot of hill

To
Sine 12764×359.5
Cos 99182×359.5

Sta (27) pt 5 ft L. of Σ and
on narrow ridge bet Lake
and pot hole

changed to
Sta (28)

JP 6 N 31° E 53.7 on
Lake bank.

JP 10° N 42° 50' W 70.6

Run N 1° 17' W 146.4 T.

Sine 02240×146.4
Cosine 99975×146.4

To

Sta (28) in Left side of
cut 5 ft L of Σ
No B Ts Var O.K. Same.

changed to
pt (29)

Run N 16° 02' E along L.
wheel track 399. ft
ft To

Sine 27620×399
Cos 96110×399

Rood Svy Sect 8
Feb 20, Contd. 137-27

67

Sta (29) pt. 10 ft E of E
of cross. changed to (30)

Note. Pt 29 should be true
E as it comes on top of hill
and gives line a better
view of road going down
slope - South

24.5 E of fence

Note

over Sta 26. Sta 29
bearing $N 9^{\circ} 48' E$

Heavy snow storm and a
cold wind from S.E.

Road drips full for the
first time this winter
from P.R. Bridge East
along N. shore Cross Lake
Nat. we left our car on
E bank of Rush Lake this
P.M.

137-27-See 8.

Feb 21-1925 Sat

Twp work Watertown Twp
surveying old Co road.Note: At a point 50 ft N
and 10 ft N. of slo 27 path hole
lies 20 ft west.We walk to work wagon
warm & cloudy, drifted

~~St~~ over slo ³⁰29. B8 on ²⁷26
 S 9° 48' W slo ²⁸28 bears S 16° 05' W
 399. feet. Close check only
 0° 03' off 16° 40' OK.

Sto 29, Chgd To slo (30)

JP Shad. lies 15"

N 3° 45' E 63.80

JP 9'S 59° 07' E 54.80 on brink

Run N 4° 48' W

at 75 w are about 15 ft NE of pond.

Q 300 -

" 12 "

417.7

TT

1823

N1°21'E

69

1177

changed

3000
2811

Sta. 30. To (31) 271.9

in road 13 ft E of fence

NP 4N 53°20'E 20.15

JP 7S 38°05'E 47.90

V 6°50'

SINE 08368X 417.7

COSIN 99649X 417.7

RUN N1°21'E 271.9 To

ch. to Sta

Sta 31, 14 ft E of (32)

13 ft E of fence

JP 7N 20°55'E 50.15

NP 5S 44°13'E 45.85

Nali. at apt 154 ft $\frac{154}{114}$

S1°21'W of Nali 31. The $\frac{272}{272}$

NE CA JJ Groves Ranch

29 ft R in line

with N side of house and

fence is 9 ft West

East Branch is 45 ft E of

slopes 60 ft more to north

SINE 02356X 271.9

COSIN 99972X 271.9

70

12 11°41' W

RUN N 11°41' W on E

@ 152 cross cutout line

@ 175 bridge narrower up

@ 175 T. 225-foot hole less
with 35 ft 300 stak

@ 342 char Smith's point

road runs west 400 ft

+ 211.9 = 811.90 T.

Chy T. (33)

Sta 32 8 ft W of Q. 30' N 1/2

Oak 6547.50
32.10 HP 4 N 33°45' W 29.60

Oak 8559° W 22.60

✓ 6'50" O.K.

sin 20250 x 811.9

cos 97928 x 811.9

RUN N 14°34'E 188.5 T.

Sta 33 Chy T. (34)

15 foot xpliment 100 ft curve

JP 8 N 25°50'E 30.80

JP 7 N 78°45' W 25.25

✓ 6'50" O.K.

Run N 68°35'E 114 T.

sin 25151 x 114.

cos 96796 x 114.

N 14° 34'

~~N 08° 35' E~~

~~202~~
~~186~~
~~114~~

300.0
111.5
188.5

300.0
3
297

Changed T. (35)

Sta (34) in wheel track

JP 5N 48° 30' E 30

Oak 12 S 73° 30' E 59.2

RP Mch S 67° 30' W 70.3

RUN N 88° 08' E 294.6 T

Sta (36)

(35) in old grade

Oak 85 24° 20' W 27.90

JP 85 66° 20' E 62.0

V 7° 10'

Theo

@larguist

8
8
6.7
4.0
11.2

SIN 999471 294.60
COR 032571 294.60

Ed Butterfield walks home
to Cion Lake from Hst 33 @ 1:40

Fritzy also leaves about 1:30^{pm}

Donald & Co to 1-4000^{pm} home
late for dinner

PM

I pay Arnold 60¢ for 2
gals gas to for plankings
3-20 PM. at 3-30 I

measure bridge abutment

16 wide by 170 ft long

Top of plankings 14.3 ft
above ice about 2.5 ft
bottom of cion beams

190
 75
 5/115

73

Feb 22-1925 Sunday

Feb 23-1925 Sunday

Feb 24-1925 Tues

✓ Mch
 Post

Feb 24-1925 Tues

Town Board Waterloo Meet
 at Cross Lake Twp Hall

Note:- I worked almost all
 night last night on map
 - up till noon to-day

Reed stays out of school
 and in Post

goes with Alma and I to
 Cross Lake Village P.O.

I put in my bill 12 days @ \$5.00
 - 12 days @ \$15 - 180
 auto 10
 \$190

Donate to Twp 75
 Post \$115.

Get ck from Put Newman
 on Farmers State Bk Request
 for \$115.00 We come home via Request

74

Feb 24-1925 cont'd

Bills were as follows

John W Cunn	Total	\$ 115.
Ed Butlerfield	10 dya ^{some @ 30%} @ 240	24
Arnold Seckel	10 dya ^{8 1/4 hour @ 20%} @ 240	24
Fritz Seckel	Suppt ^{2 dya} @ 350	7.
Emma Seckel	Cunn 10 dya @ 25	25
Board of Cunn	ant 10 " " "	
Total Cost of road Survey		195.

I record skeleton notes of survey
referring to plat. in Two record
books and bring back the tracing
Will have 6 blueprints made
mail 3 to Watertown and keep 3.

Feb 25-1925 Wed

Let my ch worked at Pequot \$115.
put \$50 in First National Pequot
\$50 in Jenkins State \$140 killed
Stormy Heavy NW wind - Sunshine.

John W Cunn

137-27 Watuloum

Feb 25-1925 Cont-d

Note: See Page 64. PP 24

In making plat I slipped in
an extra station bet 24 & 25

So that from "Point" 24 on-

Station's Number change

Original Sta "25" is now "26"

and so on to Sta "35" is "36"

Bill Hardy rents Grant Lot 5

See 17-137-27

76 Brot from
inside Front cover to 762

239

2000.00

Dec 19-1931

Lep Cyrus. Red Elm 1 Jw

Hidden over nail in stp 5032.204

Ch N 252.39 To 5284.57 cor d in

7-8-17-18-137-27

Ties to 5032.20

Ties to Nail in 5032.20N

Bass 18N 37°40'W 13.6

Maple 9N 78° W 24.6

Red Elm 8S 14°E 14.5

2 1/4 x 42" pipe 7.6150 =

260 20 of Cn + 160 = 420 50 6

another 2 x 42" pipe 420 50 1

Cn 160 + 25.4 =

25 185.630K

185.40 = 102 N of MC

51 + 187.55 = tall pole

Cn 136.9 To Hub

Continue from inside Cover Page

This Book

Copied on Page 105 Bk 227

Cms Jan 9 1932.

Mar 24-

1925

77

Tues

(1)

Stimson Survey #2.

Continued (213) 213

From Page 85 Book 213

Working for H.L. Stimson

Lots 3-4-5-6-Sec 18-137-27

@ \$15. a day no pay for car or helper.

Alma-Reed and I take
lunch - L. Jenkins @ 10 AM

Two tires blow out @ Lawrence
to and we return to Jenkins

Mar 25

1925 Wed

Harold and I in my car

L. Jenkins @ 9 AM - at Slimmons
@ 9-50 L. our car @ Slimmons

walk across Lake - Re-set
slake @ Cor 7-8-17-18-137-27

On ice - Dinner with Seibel
PM.

Harold and I walk back to

Slinson res. - like car drive
West and N. to Car Park
to NW Cor Sec 18-137-27

Knution's lines seen to run
on only 3° or W to S. from here and
I tell

that his line must be 200 ft to
for v at a pt almost half a mile
West. = 500 ft in a mile

Harold and I start and
cut a line East @ $8^{\circ}15'$
almost half a mile E to
Lake - find this cuts too
far Left and we go back
to Slinson's at 4-30 PM
then on East and back to
Jitters for note.

Call this $\frac{1}{2}$ day

Slinson and Son are to meet
us in the morning @ NW Cor
Sec 18 on us

80. 4711.2
4645.1
66.1

(4)

3490.7
3125.0
365.7

Harold & I dinner with Seckel

P.M. Fritz and Arnold S.

Set back flag on N bank while

I set Amer Hat 1320 W. on ice

Turn 90° - Sight N on flag to
be set by Fritz. Rock T. to Hat

1697.2 Fly bars N 19° 41' E

Bore 377.2 ft Catapult =

19° 41' =

1740 Lr Island out open water
which we bridge and ch from 17.

+ 300 = 2000 - on ice 23-26-

2640 - 2900 on ice + 75 = 3050

ft on sand beach 10 ft W of ice

10 ft E of hi bank 2900 + 300

= 3200 - 75 = 3125 set 60 ft

spike on hi bank. 32 + 3 = 3500

- 9.3 = 3490.7 W 20° spike

red rog in E of green 9" SP 8 ft

3800 - 3880 SWP ice N E SW

4100 on ice 4360 Lr bog N-S

4400 - 4700 - 54.9 =

4645.1 Plug in 9" green

Mar 26-1925. (5)
Cont'd

81

JP step - value we have no spikes
 $4700 + 11.2 = 4711.2 = 10'' \text{ green}$

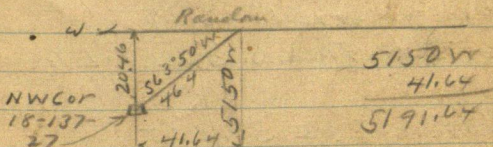
JP step plug in top $4700 + 150$
 $= 4850$ slake 4925 ent boy

$5025 \text{ L} \text{ N-S} - 4850 + 300 =$

5150 Hub (On site ⁷⁻¹²⁻¹³⁻¹⁸ 137-27-28)

$S 63^{\circ} 50' W$ $46.40 //$

$\sin 89752 \times 46.4 = 41.64 \text{ W}$
 $\cos 44098 \times 46.4 = 20.46 \text{ S}$



5150 W
 41.64
 5191.64

5191.64^3 W Cor. side $S 20.46$

$5192 \text{ mile } 20.46 = .00392912 =$

$5192 \text{ mile } 20.46 = .00394 \text{ Nix}$

Tang = $0^{\circ} 13\frac{1}{2}'$ OK. any 20-1931
g.w.c.

.00394 S. for each foot W
and,

$5270.10 \text{ FT US } 5191.64 \text{ My ch}$
 $= 78.46 \text{ ft short}$

$5270.10 \text{ in } 78.46 = .014888 \text{ short}$

82

(6)

1320 x 14888

OK. SEPT 19-45
Jack Curo

1290.60 ^{OK}	1300.35 ^{my ch} OK	$\frac{1}{2}$	2600.7 ^{OK}
1310.10 ^{US}	1320.00 ^{US}		2640 ^{US}
19.50 ^{shut}	19.65 ^{shut}		39.30
1290.60 ^{my ch}	1300.35 ^{my ch}		2600.70 ^{my ch}

14888 x 1310.1 = 19.50 shut

14888 x 1320. = 19.65 "

Correcting

1320 W. goes E 19.65 To

1300.35 W Then S. 5.12 To E $\frac{1}{16}$

2640 W. goes E 39.30 To

2600.7 W Then S 10.24 To $\frac{1}{4}$

3960 W goes E 58.95 To

3901.05 W Then S 15.37 To W $\frac{1}{16}$

5270.1 W. goes E 78.46 To

5191.64 W Then S 20.46

To Cor 7-12-13-18-137-27-28

Harold + I back to Jenkins
for night

7
May 26-1925
could Figuring

83

Note:

in running our random West
we set limit over Hub

3125.00 For sight E on
glah on in @ NE cor Sec 18

Note: our Book shot at
Hub 1697.2 fell down and
from here on West our random
cuts thro apt. 0.15 of apt
So of Hub 1697.2

Correcting

South .00394

1697.2 W goes S 6.69 + 0.15 =
6.74 (see above)

1697.2 W goes S 6.74

3125.0 W " S

3490.7 " " S

4645.1 " " S

4711.2 " " S

5150.0 " " S

5191.64 " " S 20.46

84

Time Sheet

Lals 3-4-5-6-

See 18-137-27

Working For A.L. Stimson

21 22 23 24 25 26 27 28 29 30 31

March 1925

Total
\$25.

= Colled

pd m ch

John W. Curo @ 8/5

Auto No Chg

Harald J. Curo No Pay

A.L. Stimson

John A. Stimson

Arnold Seckel

Fred Seckel

Board With Fritz Seckel @ 35

JWC

HJC

70°

70°

March 27-1925 Friday

Harold stays in Jenkins
I go alone in my car. to
Slinson's @ 8-am.

Figure till 9-am.

Slinson's son helps me
Ht Random Hut 2640 W
Ch E on ice 39.30 to pt on
random 10.24 ft N of line.
1/4 Cor Turn 90° to random

✓ Set back shot in red 60° spike
on bank about 400 ft N ²
and run

South parallel to E today
3-6-9-12-1320 ft on ice
15-1800-2100 ft on ice
2180 L. ice

$2100 + 120 = 2220.5$, T.p of H'
bank 10' ft up. 2228.10 Hut
2255. set 60° spike 3 ft S of
old E & W road and $3\frac{1}{2}$ ft
NW of 10' P. 2349.50 set
2 x 36" Birch stake in South

edge of plowed field
 Nali. This is line random
 going so But Chain
 starts at pt on ice 10.24
 ft N. of pt for $\frac{1}{4}$ on ice
 So that Hat 2228.105
 is 2217.86 So of line $\frac{1}{4}$
 and
 Spike 2255.0 So is
 2244.76 So of line $\frac{1}{4}$
 on ice

John Alinson (21 about) and
 I take T to Hat 1320 W and
 Ch E 19.65 ft L 1300.35 W pt
 5.12 ft N of line E $\frac{1}{16}$ Cor on
 ice bet 7x18-137-29

Turn 90' from random and
 run parallel to E body
 South on ice 3-6-9-12
 (A. L. Alinson sets spike on
 to bank) 1500 - 63.8 =
 1436.20 Spike 60' on

3 ft sea wall 2 ft S and 1 ft E of 3" Oak blazed on S.E. side Nat-;

Spk 1436.20 is 1431.08
ft so of line E 1/2 C bet 7-18-
137-27.

Quit at noon and I eat my own lunch at Slimson's house.

Slimson wants me to tell Leo Watton to meet him at Slimson's @ 4:00 or 4:30 AM tomorrow morning at what time he leaves for Iowa.

A.L. Slimson wants me to sell his "East forty" Lot 3 - Sec 18-137-27 = 43.74 acres vs. say, Slimson wants \$50. an acre (paid \$40.) he will throw off the odd 3.74 acres and sell @ \$2,000. = flat \$1,000.00 down and will give me \$100. Commission.

(88)

(12)

18-137-27 - Slimson

Mar 27 - cont'd

on the sale.

I charge Slimson \$30.00 but
 he say "\$25. is enough" so
 I say "all right" he says
 he will be back in two weeks
 and pay me - I tell him to
 L. my ck with Jenkins & Lat.
 Bank

At home in Jenkins @ 3-P.M.
 Miss Leslie of Duluth &
 Miss Pells of So Dakota
 picocher sat 5 P.M. supper
 at our house. Harold & Miss
 Rouse also here.

Ch \$3. in full for bath & quiz.

Stinson D
Survey Contd.

87

March 28-1925

Saturday all day in Jenkins
I get back washing machine
from Barker Robertini's he
35¢ day to John Gilmore

PM. Hugh Pugh saw
wood for wedding & I - \$1.50
to Pugh \$25¢ to John Bryant
Herald help.

Sunday Mar 29-1925

all day in Jenkins
I sign & receive \$500.
contact to Jim Owen.
for say of Tim Lakes land.

Natli: Carl J. Olson 1148. N.
Snelling Ave. M Paul (telephone)
Foreman @ "Smith System"
Foundry 2958 - 28 St S. Mpls
Off Cedar Ave. owns 160 acres
14-137-29- wants survey.

90 Stinson (2)
Survey. Cont'd

44
13

Sept. 18-1925 Sat

I L. Jenkins @ 7:10 am.

No Breakfast drive my Ford
to Fenwick where I find Harry
Bowman and Wilbur "Bill"

Andrew (Son of "Eam" Andrews)
waiting. I eat Breakfast

with Bowman and wait to

Fenwick in my car @ 8-30

Drive to Fultz. See Red Rock
where I set flag on N side of Lake
19.65 E on for Back shot up.

Page 80-86-90. This Book

Going to flag Called for Pg 80 we
find an impression by Luchel to
mark pt set to mark random N.

which has never been set 19.65 E.

To line Random

Find iron ball from which I
run S 68 E 21.20 ft

22°

Comp. 92718 X 21.20 - 19.65 E

Set Red flag Flag 22°

Sept 12-1925 Contd.

Get a boat from Sahel and go to
Hub 2600.70 W Pg 85. find
white patch OK and put red flag
on same (Get Boat from Sahel)
Drive around lake to Hub

2255 (Pg 85) B.S. on fly N of
Lake and Continue

South on E parallel with E
Bdry Cut line 600 ft and
quit for a while

Bowman and Andrews go
to supper with me at Jenkins

Alma Reed shot I

Lake Bowman and Andrews
to Eernily to Jenkins @ 9:10
Sleep at Bowman

Sunday Sept 13-1925

Alma Reed & I with Harry B.

P.M. Harry I and Andrews in
his car go to Earn Andrews in
Bess car Home to Jenkins for supper

92

89.60-
76.55-
1305

Sept 14-1925 Monday

Willie Anderson and his
Burch 4, brings Harry
Bowman to Rush Lake where
they cut line to

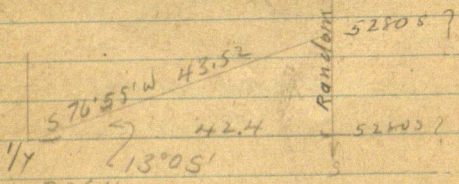
I meet them at noon
also met Stinson at Rush
P.M.

Continuation on E. of

5280 ft (about)

1/4 Cor on S. side Sec
18-137-27 - Bear

S 76°55'W 43.52 ft



Side 2264
Cosine 9740 X 43.52 = 42.4

5280 m 42.4 = .008030 - 0'27" =

1923
Sept 15-1925 Tues

all day at Jenkins on Almonson
sunny plot

Sept 16-1925 Wed

Alma - Reed - Clara & I
hunt chickens

94

Stinson

Sept 17-1925

I call Harry Bowman. Bell
Lindeman has car brings him
from family to Perkins where we
have car taken in and work half
forenoon at Linden Lake
PM

We work with Nick Everhart
at Rush Lake

Concluding: 00803 West
N-S Q see it sup

Hot. 5280. So. 2 gas w. 42.7

2255. S gas w. 0.27 R.

2255 x 803 = 18.11 vx

From Hot 2255. S BS N. Tm

90° R. Then 0.27 R. 90° 27' and

Cl. from pt 18.11 W coord. E

300 Nick Everhart helps etc

①

137-27

95

Watertown Road Survey

Oct 2 - 1925

Oct 21-1925 Wed.

Crow Wing to Red. Then to Senheim @ 11-30
^{Bring dog.}

Alma is at Cram Lake with Kat Wilson

Reed & I eat alone 3-30 PM

Alma-Reed & I go to Red - Buy Coat
for Alma \$40. O'Brien

Oct 22-1925 Thurs

Snow Storm-All day at Jenkins Dought
and I in his truck go up old grade

Oct 23-1925 Friday

Good tracking snow. I LV @ 11-
eat dinner with Fritz Seckel.

PM.

I drive up Mitchell Lake road Hunt.
all PM and back to Seckel's for supper
6-10 I take Seckel to town meeting
Home to Seckel's at midnight.

No work. Li-day. Copy Road Pet.

Jahm W Cucco

96

②

Petition

Oct 24-1925 Sat

I am to survey a road Pet v;
Watertown-- Road proposed to be made
-- build said road Beg @ White Line
N^o 5 on $\frac{1}{4}$ line in sec 24-137-27
Thence North and intersecting with
old road at shore of O'Brien Lake

Land-Owners

Howe-Libbynd Colpe NW $\frac{1}{4}$ SE 24
Mrs L. Harrison SE $\frac{1}{4}$ " "

Unknown " "

Petitioners - Signed

St Elmo Wright - G. C. Harrison

H. G. Butterfield - D. S. Libby

H. Gould - Donald G. Colp

Mrs L. Harrison - O. B. McClintock

Not yet dated

I and my car like Otto Seehel
Lv @ 8-30 Slip for E. v. old

Rundgren who cannot go W. work
alone - dig up SE Cornd and NE Cor
Sec 24-137-27 on E. Town line

Dinner with H. Gould. Supper with
Seehel - Home for night

③ 137-27
Wotertown Roads

97

Oct 25-1925 Sunday

All day at Jenkins To Pm's Riv
show Alula-Reed & I with
Hjelmer Olson and his new Auckland
One inch of snow. I write BBS
Nelson.

Oct 26-1925

Monday: I to Jenkins in my
Ford. Pick up Otto Seckel at
9-30 am. and we dig up IM @
23-24-25-26-137-27

2" pipe in v-wheel track E-W Road
Nat. Harry Gould dug this
IM. up for me yesterday. Old
BTS. Set by Harrison many and
15 years old - scintillated. Focus E
on line line BTS U_{ij}

12" JPN 67° 20' W 30.05 Ft ^{old}
14" Dead JPS 18° W 44.05 Ft ^{Stripe}
^{marker}

Place red flag at IM Cor and
drive 0.5 mi. E. but cannot work
on line because too much dirt
on road.

1925

Time Sheet - Working for Waterdown

Oct

John W. Corro 8/14

Cor

Otto Seckel 35th 8/35th

Charles Heath 8/35th

Wm. Boozell 8/35th

Emil Petta/Kon

Cor

Henry Gold

Cor

Fritz Seckel

HG Butterfield

AG McIntosh

Sam Gobin

23 24 25 SUN 26 27 28 29 30 31 Nov 1 2 3 4 5 6 7

1/2 1 0 3/4 1/2 1 1 1 1 1/2 0 - - 1/2 1 1 = 8 1/2

1 1 0 1 1 1 1 1 1 1/2 0 - - 1/2 1 1 = 8 1/2

- 1 0 1 - 1 1 1 1 0 2 1/2 - - 1/2 1 1 8 1/2

- - 0 - 1/2 1 1 1 - 0 - - - - 1/2 1 1 3 1/2

- - 0 - 1/2 1 1 1 - 0 - - - - 1/2 1 1 3 1/2

- - 0 - 1/2 1 1 1 - 0 - - - - 1/2 1 1 3 1/2

0 1/2 1 1 1 - 0 - - - - 1/2 1 1 3 1/2

0 0 0 0 0 0 0 0 0 0 0 - - - - 1 1

0 0 0 0 0 0 0 0 0 0 0 - - - - 1 1

0 0 0 0 0 0 0 0 0 0 0 - - - - 1 1

0 0 0 0 0 0 0 0 0 0 0 - - - - 1 1

0 0 0 0 0 0 0 0 0 0 0 - - - - 1 1

0 0 0 0 0 0 0 0 0 0 0 - - - - 1 1

0 0 0 0 0 0 0 0 0 0 0 - - - - 1 1

100

(6)

Oct 26-1925 Continued

Otto Sehel and I

Eat dinner with Harry (Hulda)

Gould. P.M. Drive to Ed Kimbolts

To get Lincoln Cor 13-44-23-24-137-27

I drive with Otto around H side

Goodrich look for deer tracks and

only get in 1/2 day for myself

Still with Sehel.

Hard NW wind all day and all night

Oct 27-1925 Tues

Still cold and blowing hard

Otto goes to look for Amulet

I show Pettelkac and his crew

where to cut line and they work

part of the day I look for NW Cor

See 24-137-27 No dinner Only

get in 1/2 day

Still with Sehel. Howling NW

Wind & cold.

Jahnel W. Cren

⑦ 137-27 waterlain 101

Oct 28-1925 Wed.

Breakfast lab L1 @ 9-am Cor Buckner
Find Pette/kov and his car with
Chas Heath and Wm Boozell waiting
at Cross Lake store. Call Miss Gould
arrange for dinner for 2 and after
All drive East and cut line on E
side 24-137-27 Cold-runnily
Dinner with Gould H-P + B eat
their lunch. Jack Schaffer Sr at
Goulds. P.M.

Find old 3x3x36" stake set by Co.
Surveyors Ingram in E-W-8 road @
Cor 19-24-25-30-137-26-27 set
from old US BTS. Still here in

North on Town Line

300-600-900 sth in swp ⁹³⁰⁷ 630 LV
E-W- 900 + 135.2 = 1035.2 Hub on hill
1335.2 - 1635.2 - 1935.2 - 2235.2
Stakes not on line 2535.2 + 24.8 =
2560. Hub + 70 = 2630 old fence W,
2755 N. Old Wood fence runs
West and NE. SE Cor post 10 ft West
2860 stake. 3030 old well

Over

102

⑧ Watertown Roads
137-27-26

Oct 28-1925 Cont'd

3060 N enter green spr swamp N20°W

S 20°E 3160 stake in swamp +128.2

= 3288.2 Hub in swamp 3460 sth

in swamp 3610 pt of solid land

N20°E-S20°W-3760 stake 20 ft W

of swamp 3763.6 Hub

Quit @ 5 pm. Still with Sikel

Oct 29-1925 Thurs. US Nalis

US Notes Town Line 137-26-27

US Nalis Pg. 179 A

US 19-24-25-30- US Nalis

Tam. 4 N 40 W 48 = 31.68

4 N 41 E 17 = 11.22

4 S 36 W 30 = 19.80

4 S 82 W E 38 = 25.08

N. B. 19-24-137-26-27 Var 10½ E

1400 (-924) L v Tam Swp N-S ?

4000 Set ¼ v. YP 8 N 63 E 105 = 69.30

YP Stob 10 S 87 W 20 = 13.20

8000 Cor 13-18-19-24-137-26-27

YP 10 N 79 E 37 = 24.42

" 10 S 76 E 74 = 48.84

OK. JP 5 S 55 W 21 = 13.86 OK mhd

" 5 N 48 W 60 = 39.60

9 US Notes

103

23-24-25-26-137-27

YP 5 S 87 E 19 = 12.54

YP 8 N 6 1/2 E 14 = 9.24

WP 10 N 38 1/2 W 149 = 98.34

" 5 S 53 1/4 W 141 = 93.06

West Bet 24-25 \downarrow 10° 59'

3290 (= 2171.40 FT) MC E. Lake

WP 24 N 80 E 56 = 36.96 FT

" 10 S 3 1/4 W 65 = 42.90

7321 (= 4831.86 FT) MEW. Sid.

ASP S 55 1/2 W 60

" N 73 W 44

8016 (= 5290.56 FT US) Cor to

23-24-25-26-137-27

North Bet 23-24 \downarrow 10 1/4 E

2100 (= 1386.) Marsh E-W

3430 (= 2263.80) M.R. O'Brien Lk.

Tam 6 N 61 E 163 = 107.58 FT

" 6 S 41 W 183 = 120.78 FT

Set fly v. side Base N 42 E 340 Lks.

(= 224.40) Fly Bears N 12° 45' W

Dist over Lake 1346 = (888.36 FT)

4776 (= 3152.16) MC. N. Sid. O'Brien Lk.

ASP S N 51 W 15 = 9.90

Tam S N 61 1/2 E 65 = 42.90

5668 (= 3740.88) MC S. Sid. Lake

P. 5706 10 S 2 W 62 = 40.92

YP 18 N 83 E 140 = 92.40

Set Fly N. Sid. Base S 70° W 422 Lks.

(278.52 FT) Fly N 9° 30' E

104

10

US Nalis 137-27

Dist over Lake 2216 LKS = (= 1462.56)

7884 (= 5203.44)

YP15 N10°E 14 = 9.24

YP18 West 17 = 11.22

$$\begin{array}{r} 8 \\ 280.8 \\ 5203.44 \\ \hline 5484.24 \\ 16.5 \end{array}$$

8000 Cor

13-14-23-24- 137-27

YP15 S 4 E 94 = 62.04

" 15 S 54 W 46 = 30.36

WP18 N 55 W 387 = 255.42

YP 6 N 7 E 845 = 557.70

East Random Bet 13-24 10 3/4° E
 3086 (= 2036.76) Temp M.C. West
 side O'Brien Lake Set Fly E side
 Run N 20° E 3 Chs (= 198.) Fly Res
 S 64° 45' E Dist over Lake 7. Chs
 (= 462.00 ft)

3786 (= 2498.76) Temp M.C. E side
 (Omet Arm) O'Brien Lake

3945 (= 2603.70) Temp M.C. W side
 Set fly E side Run S 39° W 470 =
 (310.20) Fly Res 51° 11' W Dist over
 Lk 749 = (494.34)

4694 (= 3098.04) Temp M.C. on E side

US Notes 137-27⁽¹¹⁾ 105

8075 (= 5329.50) V 10°54'

West on True Line But 13-24

3381 (= 2231.46) MC, E side arm

YPT 515E 40 = 26.40

Tam 3 N 30E 65 = 42.90

4130 (= 2725.80) MC, W Side of arm

Aspen 8 N 79 1/2 W 31 = 20.46

" 85 13 1/2 E 16 = 10.50

4289 (= 2830.74) MC W Side

Birch 3 N 50 W 31 = 20.46

Pine 3 S 33 E 60 = 39.60

8075 = (5329.50) Cor To

13-14-23-24-137-27

Page 311 - Book 'A'

North But 13-14 V 10°E 700 = (462.60)

E out Random but 14-23 V 10 1/2°

7800 (= 5148.00)

7991 (= 5274.00)

5274
5148

126 mm marsh

5329.50
49.50 Long 05
24
10.50 Long 05

5290.50

5329.50
5290.50
38.94

5329.50
5280.00
49.50

38.94

Oct 29-1925 Continued

It my car L. with Otto @ 8 am. Bug Gas oil
209 Pauls \$550 = \$759 Cross Lake Store

A. L. Stinson. Find Pelletkow & car
with Heath & Boozell cutting line

North Bet 19-24 Town line 136-26-27

Random var reads 7'15" Hub 3763.6
+ 172.4 = 3936. Stake on line in
mound 27 ft N of E & W fence
(3900 ent swp ~ 20° W - S 20° E)

@ 4000 we are 10 ft E of W edge of
swp 3936 + 300 = 4236 Stake

(4100 L. swamp) 4536 alk
+ 191.1 = 4727.1 N. Hub + 300 =
5027.1 alk + 259.5 = 5286.6

Hub from which Cor li Recs

13-18-19-24-137-26-27 25
N 86° 03' W 80.30 ft Find

4x4x48" dry oak stake set by
Co. Surveyor Knutson and Bill
McDonald Two years ago when
they platted Pine Way for
The Harrison Co of Brainerd

US Notion Pg

old US BTS π looking about west on
Knulson's random.

Old BT whol S $58^{\circ}20'W$ 13.85

Old plump 12° N $65^{\circ}10'E$ 19.40 ?

" " 12° S $76^{\circ}20'E$ 49.50 ?

Knulson's New BTS viz: Scribed

7" JPN $52^{\circ}40'W$ 20.95 { scribed

12" NPS $43^{\circ}40'E$ 22.25 { base

I Take New BTS viz

7" JPN $40^{\circ}35'E$ 41.50 Flat fold

8" JPS $48^{\circ}30'W$ 32.35 base

Pittelkow cuts off slake and I
put lock in center.

BS. West on Knulson's π line
and run East to I.P. of my line

80.1 ft From 5286.6 N ch N. 6.40

To 5293.0 N From which see cor

sets π $89^{\circ}20\frac{1}{2}'W$ 80.10 //

SW angle of random's reads

$89^{\circ}20'30''$

108 Watertown Roads 137-27

Oct 24 1925 Continued

19

²⁹ From Cor 13-18-19 24-137-26-27 Run

West on random (Knutson's old line)

but see 13-24-137-27

300 Enter Swamp N-S. 450 L. N-S

600 stake 77 ft W of old road NE-S

640 meadow N-S 720 L. 900 sth

+ 266.5 = 1166.5 Hub 1200-1500

1544 & new road NE-SW

1570.3 Hub Knutson's 2" I m

S 18° 08' W 32.7 ft

L.A. stake S 18° 03' W — ft

Mhd L. L. L. L.

1800 sth + 133.5 = 1933.5 Hub near
Mrs Harrison's cottage

Knutson's 2" I m S 54° 10' W 139.5

1933.5 + 108.1 = 2041.6 + 116.6

= 2157.6 stake on ice

(2000. W = Sea wall)

2157.6 + 300 = 2457.6 stake on

sand beach 10 ft W. of water arm
of O'Brien Lake also 10 ft E of sea
wall 2457.6 + 97.5 =

2555.10 V. Hub on Point

Out for me I go home to get dinner for supper
over me

Oct 30 - 1925 Friday

Breakfast at home in Jenkins
 I L. @ 7.30 or 8.05 Pick up Otto S.
 and find Pottelkow crew waiting at
 Cross Lake Store

Continue

West bet 13-24-137-27

2555.10 Hub on pt + 61.9 = 2617

sea wall + 13 = 2630 entire in

slightly thin, 2555.1 + 300 =

2855.1 m in slabs + 250 = 3105.1

in 2855.1 + 300 = 3155.1 slabs

on hill (3155.1 - 30 = 3125.10 slabs

on sea wall 2 ft w of edge) Lake runs

N 20° W for 50 ft then N 20° E 900

also S 20° E 50 ft then S 20°

3155.1 + 300 = 3455.1 slabs

+ 300 = 3755.1 slabs - 190 - 1 =

3565.100^{Hub}

3455.1

300.00

3865 Hub

109.9

190.1

3565.0

109.9

4115 air amp N E - SW

+ 165 slabs in bog 25 ft N of land

110 Oct 30-1925 cont'd 10

atls and \pm lake driven with Gould

PM. Work basin on line and Hut

True E-W line bet 24-25

136-27 True SE Cor sec 24

Focus north on my random turn

Left $90^{\circ}33'$ so that at SE Cor

Sec 24 NW angle reads $90^{\circ}33'$

(O.O. plat)

True Turn SW Cor sec 24

focus about East Turn 90° on

North on random bet 23-24

137-27 @ 16.3 Hut 350-600-900-1200

1500-1800-2100-2253 sea wall

NE-SW Oct 31-1925 Sat

2400 slake on ice 2400+150=2550

Slake on ice so of open water O'Blk

+300-2850 slake on ice on open Lk

+300-3150 slake on side hill

18.6 N of Hut 3131.4 on sea wall

3150+34.3=3184.3 Hut

on hill 3220 entire E end of

Turn swp NE-SW 3484.3

slake in swamp (Red chains)

Along Red Tx also cat dinner

Oct 31-1925 cont'd 17

111

Saturday

with Harry Gould

P.M. Ice shakely warm sun

Reed & I afraid to cross Otter Lake
Go around west end and break
thru mud and ice on west end

Otto comes on in "shakely"

Alma stays with car at
hog track on south of lake

$3484.3 + 149.5 =$

149.5

3633.8 Hub at highest hill

70 ft N of swamp which runs

SW and SE

3633.8 is 50 ft S of bog and 127.50
of water. Bath runs NE-SW

Otto sets line of flags across
lake north. π over Hub 3633.8

^{N. net} West face of 10" Pine stub Plainly marked
beams N E π

and the burned stump of about 18"

N.P. Plainly marked beams

N E π

M.C. Post N $11^{\circ}34'$ E 91.00

US Notes Pg 103

(18)

112 Oct 31-

42338

45338

85
4318882
46188

3933.8 - 4233.8 - 4533.8 stk
 m + 85 = 4320 lv in rule
 open marsh about 4400 m
 80 ft E. of point of land coming
 from the west. @ 4533.8 stk
 in bog @ 4833.8 - 5133.8
 stk in bog 50 ft so of pt. of land
 coming from the west bog NE SW
 Quet at 3.35 walk back

Note: Alma-Rud and I L
 Jenkins @ 8-9 am pick up Otto at
 9- and work till noon then all
 like dinner with Mrs. Harry
 Gould - and back to work.

Take Otto nearly home then
 drive to Beaver Creek in evening.

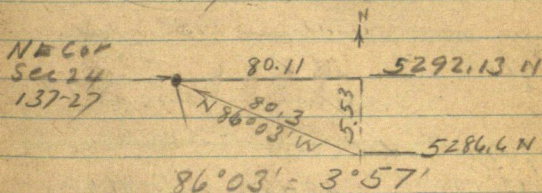
Pick up Clara Noland
 and back to Jenkins at 10 PM.
 = 1/2 day.

Nov 1-1925 Sunday

All day in Jenkins

Nov 2-1925 Monday all day
 in Jenkins \$20 to Wesley Hunt.

Nov 3-1925 Tues
Figuring



$$\sin 06889 \times 80.3 = 5.53$$

$$\cos 99762 \times 80.3 = 80.11$$

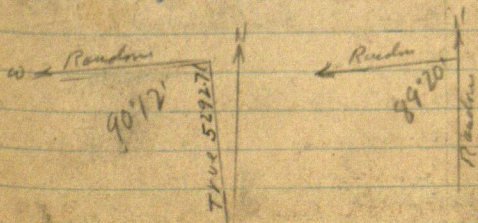
$$1.01574$$

$$\begin{array}{r} 5292.13 \times 80.1100 \\ \underline{529213} \\ 2718870 \\ \underline{2446065} \\ 728050 \\ \underline{529213} \\ 1988370 \end{array}$$

$$= 0^{\circ}52' \text{ Cis} = 99989$$

$$5292.13 + 0.55 = 5292.68$$

See Page 106-107

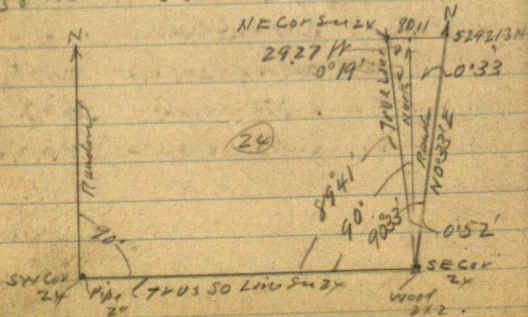
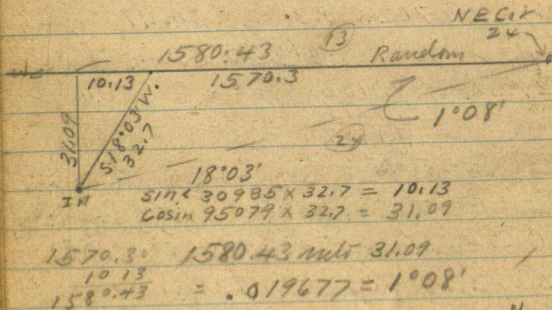
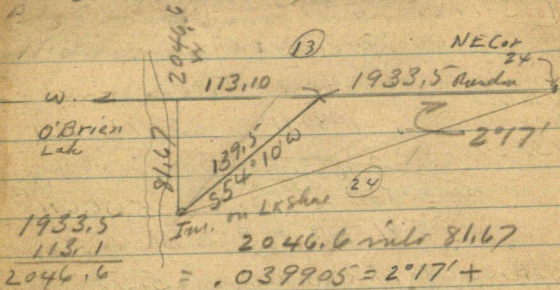


114

(20)

137-27

No 3-1925 cont'd



Nov 3-1925

(21)

115

Continued Tues

I Lv Jenkins @ 10-am drive to Piquette
and \$21.75 for carfare SR 700 and
12.40 for tires to NWTC.

Ar Reckels @ 11-30 eat dinner

Heavy SE wind - stormy
PM.

~~Continued~~ PM.

Visitors P 104. Storm New York

I drive to Corn Lake \$1.25 shells drive
to "Mally Pers" bet Lk Edward & Mally
Find about King & 15 others and come
home to Jenkins. Gladbach Mill Run
No change for today

Nov 4-1925 Wed

All day at home in Jenkins. Raining
steadily. Bill Mc Lane and "Corie"
Wall arrived last night at Bill
Hardy's place.

Figure Corrections

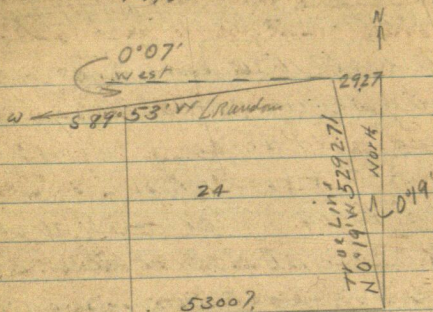
0°33'	00960 X 5292.13 =	50.81	ok.
0°19'	00553 X 5292.13 =	29.27	
0°52'	01513 X 5292.13 =	80.07	ok.

116

No 5-1925
Thurs

137-27

22



$$0.07' = 0.0204 \times 53 = 10.81 \text{ about } 7$$

$$5292.71 - 10.81 = 5281.90 \text{ N. should intersect}$$

$$2.17' = 0.39905 \times 53 = 211.5 \text{ Ft about}$$

So that according to Knutson's
survey we should find the NW cor
Sec 24-137-27 at a point - 5070.4 N
figuring the mile 5300 ft NW?

L. Jenkins 11-30 - Series of sketches
12-20 - PM Otto and I.

3633.8 Hat True MC bears
N 11° 34' E 91.00 ft Find
US Nails Pg 103.

Pine Slab 10" S 2° W 62 = 40.92 Ft

YP 18" N 83° E 140 = 92.40 Ft

We find the 10" slab plainly

marked from which we ch ^{NW 5} 23
N 2° E 41.50 and dig point of old stake well preserved out from under a 12" old pine tree well rotted - point of stake sharply pointed with an axe.

Tower True MC. BS. S 11° 34' W
Old BT slab S 2° W 41.5

Nat: this should be 40.92 ft
= 0.58 of a foot too long
New BTs.

6" Oak East 79.2 ft chained on slope down
16" IPS 11° E 63.80 with to top of T

"BT" marks on old BT. S 2° 30' W.

Main body S 2° W. OK.

Walk North to stake 5133.80
+ 97.7 = 5231.5 Hub on tip of point of land from the west

Pg 103. US Nails

We find stump of SW Pine stump plainly marked BT. from which we ch N 54° E 30.36 ft and find old stake imbedded in moss. Nat we leave this alone until we get more witnesses. Call on Harry Gould.
Supper & mile with school. John C.

148 Nov 6-1925-Friday (24)

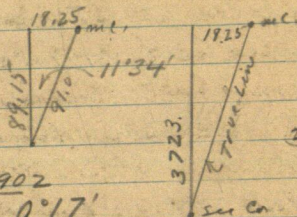
$11'34'$
Sin $20051 \times 91.0 = 18.25 E$ 137-27
Cos $97969 \times 91.0 = 89.15 N$

N 3723.

seep

120 ck.

Hab 3633.8 N



$\frac{18.25}{91.0} = 0.004902$

3723 $\times 0.004902 = 0'17'$

3740.88 US = 3723.0 MY Ch = 17.88 short

Otto and I L @ 8-20

Fritz too sick to go so we pick up H G Butterfield who we have to wait for

(Edith Butterfield 3731 Aldrich Ave N. Mpls

Tel Cherry 9180. is at home in Cross Lake) Pick up Harry

Gould and go to NW Cor Sec 24. 137-27 where Gould and

Butterfield watch Otto Seckel and I dig up point of old stake

Butterfield pulls up the point himself and we all pronounce

True Corner - also SW BT stop drink mtd "B.T." distance 0.50 S

NW6-1925

(25)

137-27

118

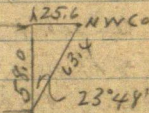
Continued

also look at MC N-12. So
mid of lake - Butterfield - Goulds. also
and I see SW 1ST. plainly marked 1ST.
pt of old stake 0.50 of a foot 100 ft
away P 103. I take them to Goulds
where we all get dinner. PM.

Olto and I take H.B. home and work
alone. Town Hub 5231.5 N.
NW Cor Sec 24-137-27 bears
N $23^{\circ}48'E$ 63.40 Ft

5289.5 N 125.6 NW Cor Sec 24

Hub 5231.5 N

 $23^{\circ}48'$ Sine $40355 \times 63.4 = 25.59 E$ Cosine $91496 \times 63.4 = 58.00 N$ $5231.5 + 58.00 =$

At Hub 5231.5 Ch N 50.8 =

5282.3 N Hub at intersection of
random lines. NE angle reads

 $89^{\circ}55'$ E & W Random on N sideSec 24 runs N $89^{\circ}55'E$ Close

check as estimated on P 116.

5289.5 N Cor N $74^{\circ}05'E$ 26.6

120

(26)

5289.6 N

15°55' 5282.3 N

Sine 27424 x 26.6 = 7.29 N

Cosine 96166 x 26.6 = 25.58 E

5282.3 + 7.3 = 5289.6 N

Close check

5289.6 into 25.6 =

= .0048582 = 0°17'

Hill?

Some Check for

a straight line US. Svy.

See Pg 118 OK.

Note: Old sec cor should go 0.35 E

.004902 x 5289.6 = 25.93

To make it straight?

Beg @ stake mtd 4165 W?

alt W 300 = 4465 + 300 = 4765 + 300

= 5065 + 198.5 = 5263.5 W?

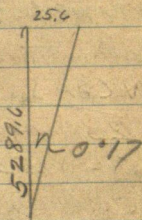
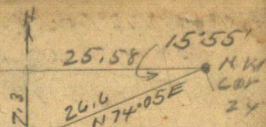
inlined random from so

Sec cor bears N 74°10' E 26.6 W

Nab? at 5110 W (about) Kneelions
old stake sets so about 4 W

OK. N° Mistake Alt. 5237.9 W

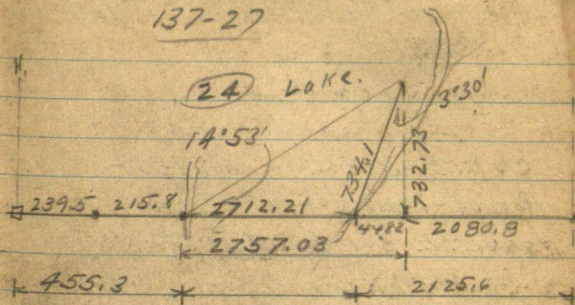
Cor Sets N 7.3



Nov 6-1925 cont'd (27)

allo and I triangulate so line 121

137-27



3°30'

Sine $0.6105 \times 734.1 = 44.82$ OK

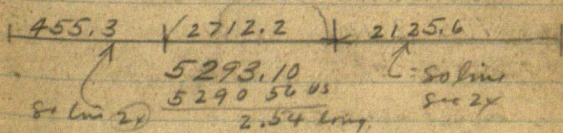
Cosine $99813 \times 734.1 = 732.73$ OK

14°53'

Tang $26577 \times 2757.03 = 732.74$ OK

Cot $3.76268 \times 732.73 = 2757.03$ OK

(24)



NW Cor
24

5237.9 chd

NE Cor
24

5238.2 Fpd. 0.3 off line

Nov 6-1925 cont. (28)
122) Otto and I triangular, so side
sec 24-137-27 as shown on pg 21
and get home to school's lab for supper
and dormitory

I Figure Corrections

East random Sec 2x

$$5292.13 \text{ into } 80.10 = .01514 = 0^{\circ}52'$$

Pg 101-102-106-113

Hot 5292.13 N goes 90°W 80.10 ft

" 5286.6 N " " "

" 4727.1 N " " W

^N
1/16 3969.09 N " " W 60.07

3936. N " " W

3763.6 N " " W

3288.2 N " " W

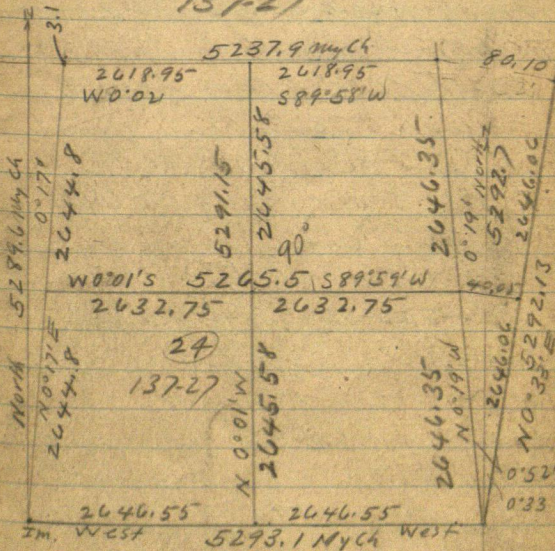
1/4 2646.06 N " " W 40.05

2560. N " " W

^S
1/16 1323.03 N " " W 20.02

1035.2 N " " W

137-27



124

137-27

(30)

Nov 7-1925 Sat

Pickup A W 'Art' Allen. Gains
are at Butterfields. From Hat
2560. N Ch N. 86.06 To 2646.06 N
Then 90° West 40.05 set 2x12"
Turn Hat + lock for

True $\frac{1}{4}$ on E Side 24.
Focus N 0° 33' E Then N. Then W.
and run West 0° 01' S on

S 89° 59' W on line E + W &
passing 0.40 of a foot So of
 $\frac{1}{4}$ Corner

300-600-900-Stacks Then
drive 10 miles to dinner with
Harry Gould - 3 men.

P.M.

Tom Robin joins us & about
800w set in fact Hat then set
another hat 0.40 of a foot N
where I set π BS. on $\frac{1}{4}$ Cor on

West on line line & set 2x
1200 stacks + 237.7 = 1437.7 Hat
1500 stk 1800 stk 2100-2400

+ 232.75 = 2632.75W

125

TRUC Center of m. 24. - 137.25
set 2-Pins. cut line 200 ft west

Town True Center Focus E

O.O. platē Turn 90° L and run
N 0° 01' W about 300 ft to road
NE-SW also cut line 80
and L for home @ 4-30 L. Sam

at Goulds - and Act at his place

Otto and I home to Sukels for

Supper - Evening

I + my car takes Fritz S.

Town Meeting at 6 PM.

① John W. Caro 8 1/2 days @ \$15 = 8 1/2 x 15	127.50
auto 8 1/2 @ 2 = 8 1/2 x 2	16.50
② Otto Sukel 8 1/2 @ \$3.50	29.75
③ Heath 3 1/2 @ \$3.50	12.25
④ Boozell 3 1/2 @ \$3.50	12.25
⑤ Pittelkow 3 1/2 @ \$3.50	12.25
⑥ H. Gould witness 1	3.50
⑦ H.G. Bullefeld witness 1	3.50
⑧ Act Allen work 1-	3.50
⑨ Sam Gobin 1/2 day	1.75
⑩ Emma Sukel Board 26 @ 35c	9.10
⑪ Hulda Gould 20 @ 35c	7.00
	<u>\$ 238.85</u>

all pd NW 7, 1925

Supper and overnite with Sukel
cured

NOV. 8-1925 Sunday

Breakfast with Leibel. L @ 10-
 Register Twp warrant - Drive to
 Piquet. Hugi Larson opens
 First State Bk and gives me Bk Bk
 Open acct Farmers State Bk
 Dinner at home in Yukon
 PM

Alma - Reed & S to Yukon 4-00
 On Emily 4-50.

Pd Harry Bowman	\$ 24.
Mrs Jennie	9.
Wilmer E Anderson	18
	<hr/> 51

Nat: The \$9. pays for our supper
 tonight. Drive west and give
 Wm King Ch \$16 in full for work
 on Quince nursery and all other.

Nat: C H Carl read a letter
 Oct 28-1925 from Major Williams

Nov 9-1925 Monday

Lv Jenkins @ 9-

? Pick up Otto Seidel and Art Allen

Ties to Hub 2632.75 W =

Center of Sec 24 (Temporary)

JP 9S 35° 10' W 93.10

" 12S 25° 40' W 52.20

" 11S 37° 22' E 62.75

Flat spot at
base lined
from center line
North

North on True line ?

94.4 Corr woven wire fence

264 // E of NW Cor 30° strike

348.5 intersect main road NE-SW

412.3 Hub 600-900-1200 Sth.

1301.6 Hub 1375 center bog Road.

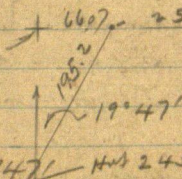
1500 in bog 1800-1820 Lv

2100-2140.2 Hub 2400

' 2458.9 Hub From which Hub

' 2555.1 West" bears N 19° 47' E

195.2 // 6607 - 2555.1



19° 47' Hub 2458.9 N

Sine 33846 x 195.2 = 66.07

Corr 74098 x 195.2 = 183.68

Continue N to pt 66. // W of 2555.1 chp

Dinner with Seidel, Home friends.

John Allen

128

²⁴ Nov 10-1925 Tues 137-27
Lv Jenkins @ 8 am Pickup
atto Seibel and art allen Faint

running road on r-s. & sec 24
Beg @ Hub in Center (Within 2/6 ?)
of sec 24-137-27 run

South on E 300 + 238.1 Hub
600 stake + 296.2 = 896.2 Hub in
E to & W graded road

JP 10 S E 17.50 JP 9 S W 15.00

Hub North 10.7

Beg @ Center Hub run

North on E Sec 24-137-27

@ Pt 16.7 S of Stake 12 =

1183.3 North run

N 32° 50' E 300-600- + 181.5

= 781.5 interest SW side of

main road which runs S and

NE. Nat my line should be
extended 50 ft or 100 ft NE

Then NE to another ap. to

meet East line of Street

3 men eat dinner with H.

Could. I take supper with

Seibel & home to Jenkins for

mile. Last day. John A. Rees

Nov 11-1925 Wed 33
Home all day in Jenkins 129
Int Carrie Emery at Mildred
meet Colo. at Hubert L. G.

Nov 12-1925 Thurs
All day at Jenkins Ladies Aid
meet at our house. Rev
McVaughlin preaching

Nov 13-1925 Friday
Clara Valand RFD #6.
Bid. goes home I pay her \$225
Val in full.
I should go see Lundborg
Burr at Nisswa

ICo Cues-Mae Butcock
writes from 60 Central
Terrace St Paul.
I buy pen \$750
Pindell -- ? Land agt

Jan 6-1925 Figuring Road plat etc.

Jan 8-1926 Friday

Alma and I drive to Sechels and
back in evening

Jan 9-1926 Sat I and Reed Lv
@ 10 am. Lv Rud at Sechels where
he eats dinner - I pick up Fritz -
and we drive to Cross Lake where
Butterfield and Sechel make
out bills. Then drive to Harry
Hould's where they pass on bills.

By

JW Curo	*36	deduct 6	bal	*30.10
Allo Sechel	2 day			7
AW Allen				7.
Emma Lake	Bural			2.10
Mrs Hulda Gould	Board			2.10
	Total			48.20

back to Sechels for lat dinner
Reed and I then at 12
and back to Jensens vs
Pequot. Two preachers at our table
John W Curo

Fred Seckle Aug 10-1931

131

Aug 11-1931 Figoring
 $5287.55 / 19.50 = 0.003688$

137-27

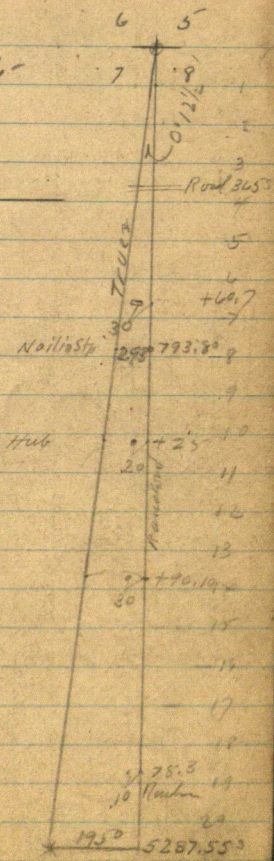
①

See

Old Survey Pg 6-
 This book

Road

Road Pg 136



1950 5287.553

Time sheet Working For Fred Sekel

August 1931

Sun

7 8 9 10 11 12 13 14 15 16

John W Curo

?

1 pm 1 1

Exp

-

1 1 1 1

Cor

1

1 1 1 1

Fred Sekel

?

9 95 1

Otto Sekel

-

1 AM 1 1

Arnold Sekel

-

1 AM

Rud Curo

-

1

Sekel Boat

pm

Board Sheet With Mrs Emma Fritz Seckel

Aug 1931

4 5 6 7 8 9 10 11 12 13 14 15 16

Alma

Reed

SWLuro

5 - -

0 - - 0

5 - 0 0

(3)

133

Aug 9-1931 Sunday

PM. Alma and I drive to
Sahel Res. Fred and I take
his boat and look for old survey
Hubs on So line see 7-137-27
See Pg 79 This book

Eat supper with Sahel and
go home to Jenkins

Aug 10-1931 Monday

Otto Fritz & Arnold cut line
So bet 7-8-137-27 Grent St.
10-AM.

I work all AM in office

PM. I set 4. I m s for

Attwood & Look for
corr on W side 7-137-27

drive to Sahel Res after
dark and home to Jenkins

⑤

Aug 11-1931 Tues

I drive to School
 Pick up Otto & Fred. Work all
 day on line bet 7-8. 137-27

Cut out connected line

Dinner & Supper with School
 Home to Jenkins late

Mattie stay her first mile
 with us. Reed arrives on bus
 from St Paul - Mrs Kephart
 died last mile

At

Aug 12-1931 Wed

Mrs Kephart funeral today

Reed and I to Jenkins

9-30 at 10-30 find Arnold
 School alone calling line

To bet 7-8-137-27

136

7248

⑥

7217

3.1

Beg @ cor 5-6-7-8-137-22 ch

Southern line line = 2600.

370.20 R.R. spike & E-W road skd

St. 1 Run S $76^{\circ}04'W$ 724.8 T. Sk ②

St. 2 = R.R. spike & E-W - graded road

St. 2 Run S $74^{\circ}17'W$ = $1^{\circ}47' L$ 335.7

To St. 3 = R.R. spike 1/4 N of N ditch

9/16 N of & road See pg 67 Sk 227

Run sk ③ BS. N $74^{\circ}17'E$ RyS $47^{\circ}31'W$ = $26^{\circ}46' L$

To sk ③ N rid. Duff Kimball's

House bears about S $70^{\circ}40'W$

Too much brush to see well

Sk ③ Run S $47^{\circ}31'W$ 587.30 T.

St. ④ sets 7/16 of & road

To sk ④ BS N $47^{\circ}31'E$ & road bears N $43^{\circ}30'E$ 50 1/4Kimball Res W end N $15^{\circ}40'W$ Run S $10^{\circ}05'W$ = $37^{\circ}26' L$

650.20 To St. 5 = & road

Correction =
003688

- 3
- 4
- 5
- 6
- 7
- 8
- 9
- 10
- 11
- 12
- 13
- 14
- 15
- 16

R.H. spike

Nals! Should be

TRUCKING

Random

0.10

6.60

1274.3

Should be 6.93
Fgt.

6.93

620

.23 fl

5287.655 + 19.50

S

138 Aug 13-1931

Reed and 2 L. Jinks 8:30 am
walk on plat at Seibel H.
Heller PM

Move sl^o ⑤ BS-N10°05'E on sl^o 4

Run S 11°38'W = 1°33'N, 430.80 To H 6.

5 NE & read Heller over H ⑥

BS N 11°38'E Run S 30°15'W = 1837 N

@ 130 Road 6' L @ 180 & read

@ 250 & read 30' N.

384.60 T. sl^o H ⑦ W of & L //

Move sl^o ⑦ BS N 30°15'E

Run S 25°49'W = 4°26' L 0 H 1

205.50 T. sl^o H ⑧ W of & L //

Move ⑧ BS N 25°49'E Run FS

S 88°41'W = 62°52' N @ 50 H 1

@ 100 H 1 R. spikes

Co. 100 H 1 W

600°
194°60'
405°40'

Aug 13-1931 Could
at 2-30 PM Free help.

139

Sta # Four sight on flog on
Lake shore and river

S 88° 41' W 50-100 Huts N H 5 ft
@ 200 stake foot of hill enter
marsh 240 water H-5

293.75 from old stake

300 stake 400 other on line

480 + 25.5 = 425.5

R H stake Ht @ 433 = 2x2

white stake 7 ft 20 of Top

Cut bank 8 ft Ht 30 ft wide

Halt 293.75 = Sta 9.

433.00 = Sta (10).

Lower Sta # 10

BS N 88° 41' E

Top of Brink North 9 ft

N 45 E 40 - N 50 E 100

N 53 E 150 N 45 E 500 about

West 12, S 53° 30' W 30 to 80

S 48 W 150. white fly bar

S 55° 25' W about 400)

= 33° 16' L @ 300 stake measure

4 ft Cut bank 30 L

140

continue

300 + 235.7 St # 11.

= 535.70 set 2x2 wheel
slab Low bank 70 to wall

Point # 11 BS N 55° 25' E

Rm S 15° 56' E 135.50 // T.

St (12) = 71° 21 1/2' L

Point 12 BS N 15° 56' W

Rm S 45° 36' E 45° 35' 1/2' E

= 29° 39 1/2' E 29° 40' E

@ 131.80144 296.40 to 13

300.00

360

Point (13) BS

296.40 N 45° 36' W Rm

N 27° 13' E NW angle Road

72° 49' - 107° 09' L ?

72° 50' N 27° 14' E

200 to 290 West edge

of wall 405.4 WP Stamp

@ 15. W of wall 600

450 to 525 wall

rough W 20 ft 6 as per

+ 125.3 - 725.3 also

slab

@ 575 water lvs 45' R. 50 //

@ 600 neck of water R. 35 //

π over NE Cor = Sla

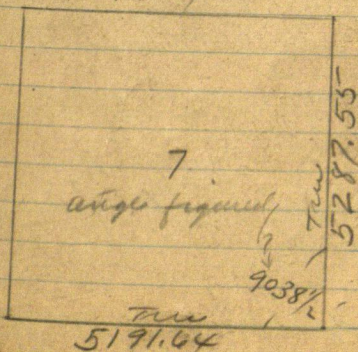
Sight S 88° 41' W

S to 13 bears S 32° 47½' W

S 27° 12½' W

6.25 PM Cloudy - mist
too dark to see clearly
OK. Close check

N
137-27



144

831

Goodell

Swamp 89.45

64.50 + 50

278.9

1 J St St Louis

Mo 1. J St St

Louis Mo

International
Healing Co

Box J 13 -

3939

International
Healing Co.

St Louis Mo

J 13 - 1339

Magnolia Ave