

Leo Brown
Hubbard Co.

PENWORTHY

TRADE MARK REG. U.S. PAT. OFFICE

18A



NOTE BOOK

Name _____

No. 348

Leo Brown
Sec. 18-140-31
South of Crystal Lake
Feb. 22-1949

Ties US Notes to
 $\frac{1}{4}$ bet ²⁹⁻³⁰ 19-30 - 140-31
_{L to V @ 5}
N.P. 14 S 58 $\frac{1}{2}$ E 58 Lks -
B.P. 14 N 68° W 15 " =

To 19-20-29-30
W.P. 24 S 32° E 140 Lks -
N.P. 14 - N 80° W 102 Lks -

To $\frac{1}{4}$ bet 19-30 - L to V @ 6
W.P. 8 N 10 E 50
N.P. 16 S 93 E 84

V. - 19-30 on Co. Line
Pine 24 N 70 W 55
W.B. 8 N 20 E 36

@ W. = 18-19 on Co. Line

Aspen 8 N 30 W 17

Spr. 12 S 42 W 46

N.P. 14 N 49 E 54 = 35.64

Spr 10 S 29 E 13

MC-N^o 38 South side Crystal
Lake

W. Birch 55 65° E 23

" " 69 40° W 50

MC-N^o 39 N side Crystal
Lake Spr. 6 N 55° W 25

" 6 N 45 E 32

7-18 on Co. Line = X

Oak 65 32 E 36

Pine 24 N 28 W 33

" 36 S 85° W 64

OK

$$\begin{array}{r} 354 \\ 324 \\ \hline 324 \\ 324 \\ \hline 3564 \end{array}$$

line 12 N 35° E 39

Old Notes from Hubbard
Co. Record Book A page 458
Harold Curo Dep. Co Surveyor
Guy Todd flag + Chain
beg. @ SE Cor Sec. 13-140-32
Where we find N.E. B.T.
and point of old stake
drive in old pump point
and mark B.T. as follows
8" I.P. N 35° 40' E 36.7 ft
6" I.P. S 43° 49' E 40.5 ft

(Note) this is the SW Cor
of Sec. 18-140-31
Set in 1921 From old B.T.
New Trees set @ 8° Var

Feb. 22 1949

Claworth Miller & I

Lv Walker in S.W.C. Car
@ 1 o'clock drive to S.W. Cor
of sec 18 - 140 - 31

Set my me in 1920

My old notes see page

We find the old N.E.
tree still green

We dig around in the
deep snow and find

the S.E. stump with
lower blaze partly
grown over

from which we chain
in and set @ 60' apart
for True corner about

2 ft N of S shoulder of
fill

Over True Cor.
old B.T. stand

44' J.P. Tree $N 35^{\circ} 40' E 36.7$

J.P. Stumps $10 S 44^{\circ} 35' E 40.5$

Needle-reads $7^{\circ} 45'$

Take New Tree

J.P. 10 $N 51^{\circ} 46' E 56.30$ ^{Spot} _{at Base}

J.P. 5 $S 72^{\circ} 05' E 68.2$ ^{Spot} _{at Base}

White Oak $6 S 13^{\circ} 15' E 25.8$

to spot 4 ft up

We put on snow shoes
and walk N to the S
shore of Crystal Lake
then back to car, load
tools and drive 1 mile

E and one mile South

The cor. to Sec. 19-20-29-30

The cor. at intersection of
4 roads. There is a

24" N. P. stands S E
blazed but it is not the
U. S. as they do not
call for N. P. S. E.

Drive to Hackensack
stop @ store

on to Walker

about 1 hr setting cor.

Harold Curo

Feb 23-1949

Pick up Elsworth Miller

@ Has in Car \$2.00

drive to SW cor 18

140-31 by way of Alkey

Have blow out in hills

S of Alkey arrive @ SW

Cor 18-140-31 @ 11:40

pack outfit N to Crystal

Lake beg. @ IM set by

J.W.C. for M.C. 39 N side

Crystal Lake on Co. line

chain South over ice,

From IM

N. to 'Stake 1454 S'

Co. line Cor cuts about
1 ft S and 7.8 W of IM

IM - 1.5 E of Fence

fence changed since
survey

@ 300 p.m. @ 600 p.m.

@ 900 " " 1200 "

1500 " 1800 "

2100 " + 165.4 = 2265.4 p.m.

but said Crystal

@ 2100 + 192.8 = 2292.8

spike hab. top of lake

2292.8 - 60 = 2232.8

Crystal Lake

2292.8 + 147.4 = 2440.2

60' spike hab. Sta (1)

Tower Sta (1) B.S. North

on M.C. 39 N side lake

Rum S 3° 34' E

@ 229.0 p.m. + 300 =

529.0 p.m. + 295.0 =

824.0 Sta (2)

Turn Sta(2) BS N $3^{\circ}34'W$
and RUN

S $1^{\circ}07'E$ 104.90 To Sta 3
Sta 3 = True SW Corner
18-140-31

quit 3-30

Sta(1) is 2440.25 / MCN^o39

Fig.

S $3^{\circ}34'E$ 824.0 ft.

Sine .062210 \times 824 = 51.26 E

Cosine .998063 \times 824 = 822.4 S

Sta 2. is 802.4 S and

51.26 E of Sta(1)

S $1^{\circ}07'E$ 104.9

Sine .019488 \times 104.9 = 2.04 E

Cosine .999810 \times 104.9 = 104.88 S
of Sta(2).

South

From Sta. 0 - to Sta. 1 = 2440.2 fts

" " 1 " " 2 = 822.4 " S

" " 2 " " 3 = 104.88 " S

3367.48

Sta 0 = M.C. No 39 N side - crystal L.

" 3 = SW Cor Sec. 18 - 140-31

from 0 - to 3 = 3367.48

from NW Cor Sec. 18 - to MC 39. =
1454 - 1 ft

From NW Cor Sec 18 To SW
Cor 18 = 4820.48

Leo Brown
Sec 18-140-31

March 1-1948

Commissioners Meet
J.W.C. home all day
I put in a bill for
Recording \$33.65 get
it in too late the
chairman had gone
home.

Commissioners
approved Christison
plat Birchwood shores

Cal Hegstrom tries
to sell them a
Smith Typewriter for
Surveyors Office
they will think it over
Cal is from
Bemidji Minn

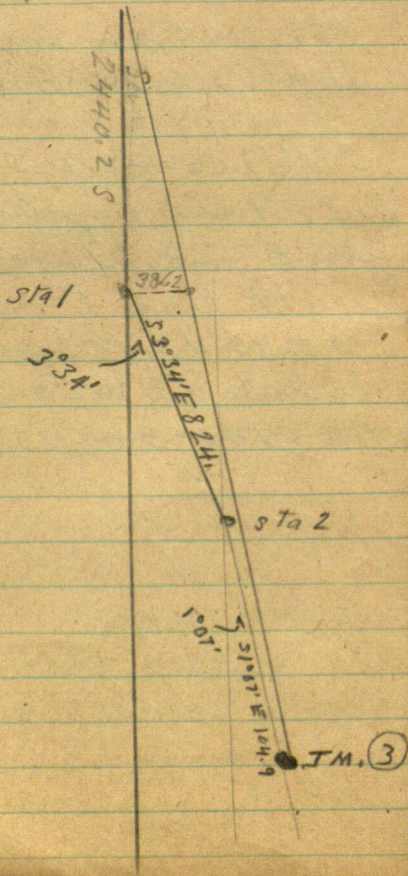
Leo Brown

Sec 18-140-31

Correction for
the County line

Sta(1) 2440.2 S of MC
N^o 39 N side Crystal Lake
goes E 38.62 to a
straight line From
M.C. 39 N side Crystal
Lake to S W Cor Sec
18-140-31

Leo Brown
Sec 18-140-31
Not to scale



2440.2

822.4

32626

From station

Chain N. 91.3 ^{up to} ~~up to~~ ^{shore} ~~shore~~
+ 91.8 = I.M.W.M. 38

True

5" W O S ^{20°38'W} 24.95

5 W Birch S. 88°31' E 19.8

104.94

822.4

2 91.3

91.8

1110.4

THE BEST PLACE ON EARTH TO SPEND THE SUMMER



WALKER, MINNESOTA,

19 No.

THE FIRST NATIONAL BANK
OF WALKER

75-975

PAY TO THE
ORDER OF

\$

DOLLARS

FOR

640 MILES OF SHORE LINE ON LEECH LAKE

Insured against fraudulent endorsement
BY THE MINNESOTA STATE

