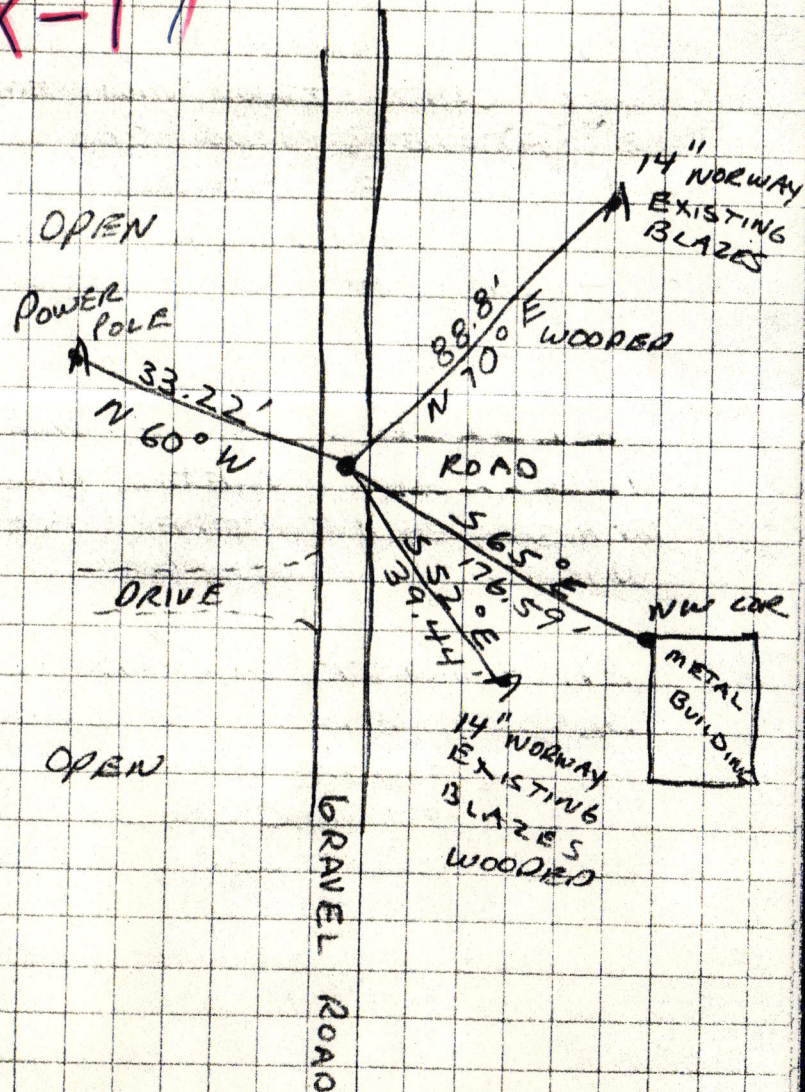


47,

BALK, EDWARD 8178

T 138 R 30
W 1/4 COR SEC 35
(PINE RIVER)65°
MOSTLY CLEAR
6/15/82K. MILLER
S. MOE
B. ZARTT 138 R 30
W 1/4 COR SEC 35 (PINE RIVER)1/2" SOLID ROD 4" OR
ROAD 4" BELOW SURFACE

X-17

EXISTING BLAZES WERE
FOUNDALL TREES HAVE
DOUBLE BLAZES AND
A DISC IN SIDE OF
THEM. PP. HAVE DISC
IN SIDE FOR MEASUREMENT
BUILDING COR IS NW
COR WHERE MEASUREMENT
WAS TAKEN

3/4/2020, 9134