

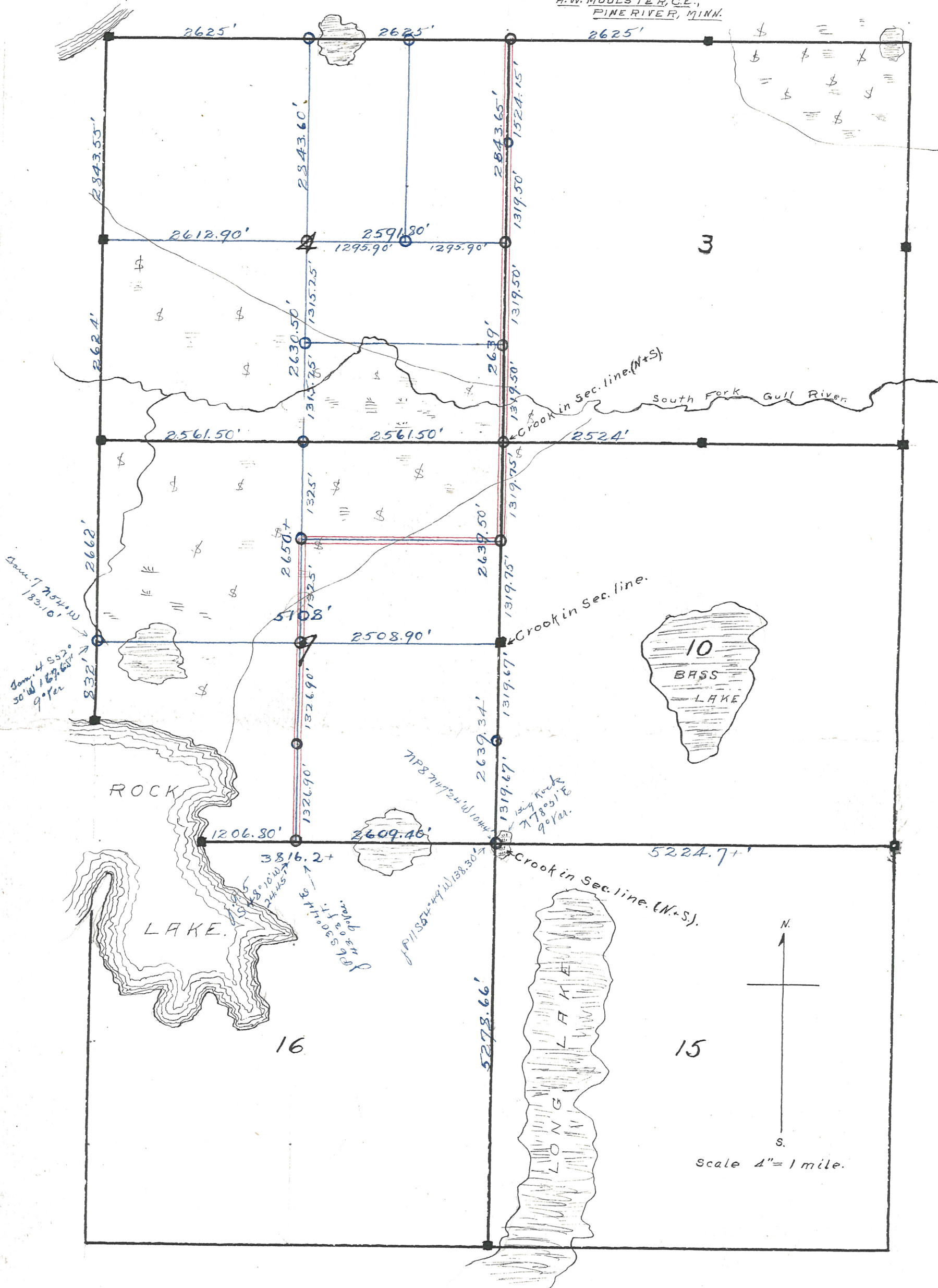
**PART OF
PILLAGER-PINERIVER CO. ROAD,**

and the

Sub-division of Sections 4 and 9,

T. 134 N., R. 30 W., 5th Mer.

As surveyed by
H. W. MOULSTER, C.E.,
PINE RIVER, MINN.



■ = Gov't corners found, one or more old B.T.'s
 ○ = Established corners.
 Blue figures = true measurements.
 ——— = Road Survey.
 New Bearings given in Blue.

I, H. W. Moulster, of Pine River, Minn., do hereby certify that the plat and notes contained on this page, are a true description of the Pine River - Pillager County Road in sections 3, 4, 9 and 10, and of the sub-division of sections 4 + 9, all in Sup. 134 N., Range 30 W., as surveyed by me on Aug. 23, 1911. Given under my hand at Pine River, Minn., this