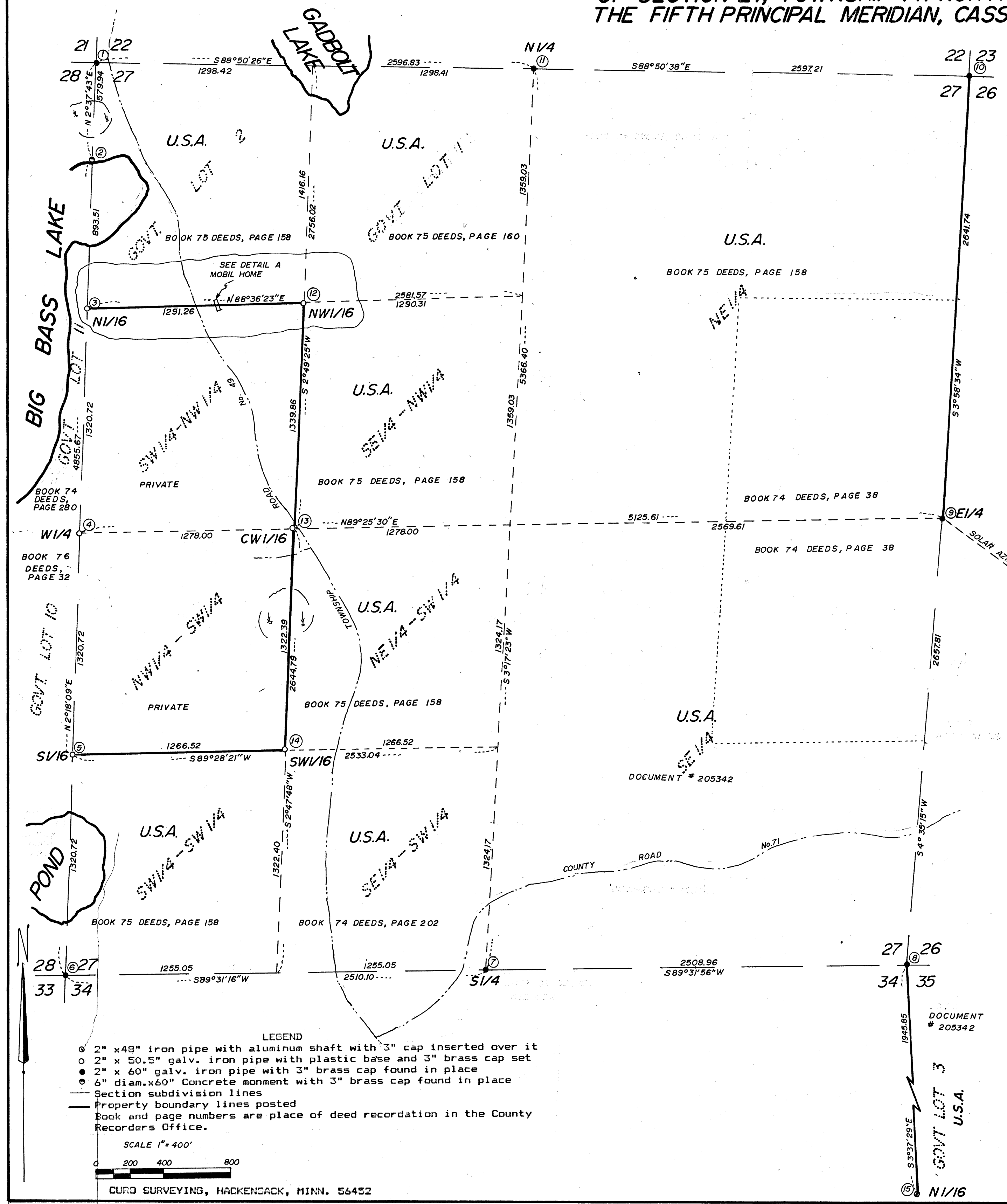


# CERTIFICATE OF SURVEY

OF SECTION 27, TOWNSHIP 141 NORTH, RANGE 31 WEST, OF  
THE FIFTH PRINCIPAL MERIDIAN, CASS COUNTY, MINNESOTA.



This Survey was made by Curo Surveying, under contract with the U.S. Department of Agriculture, Forest Service, for the purpose of recovering, restoring, establishing, marking and perpetuating corners and boundary lines of the U.S. Minnesota.

1873 U.S.G.L.O. subdivided the Township.

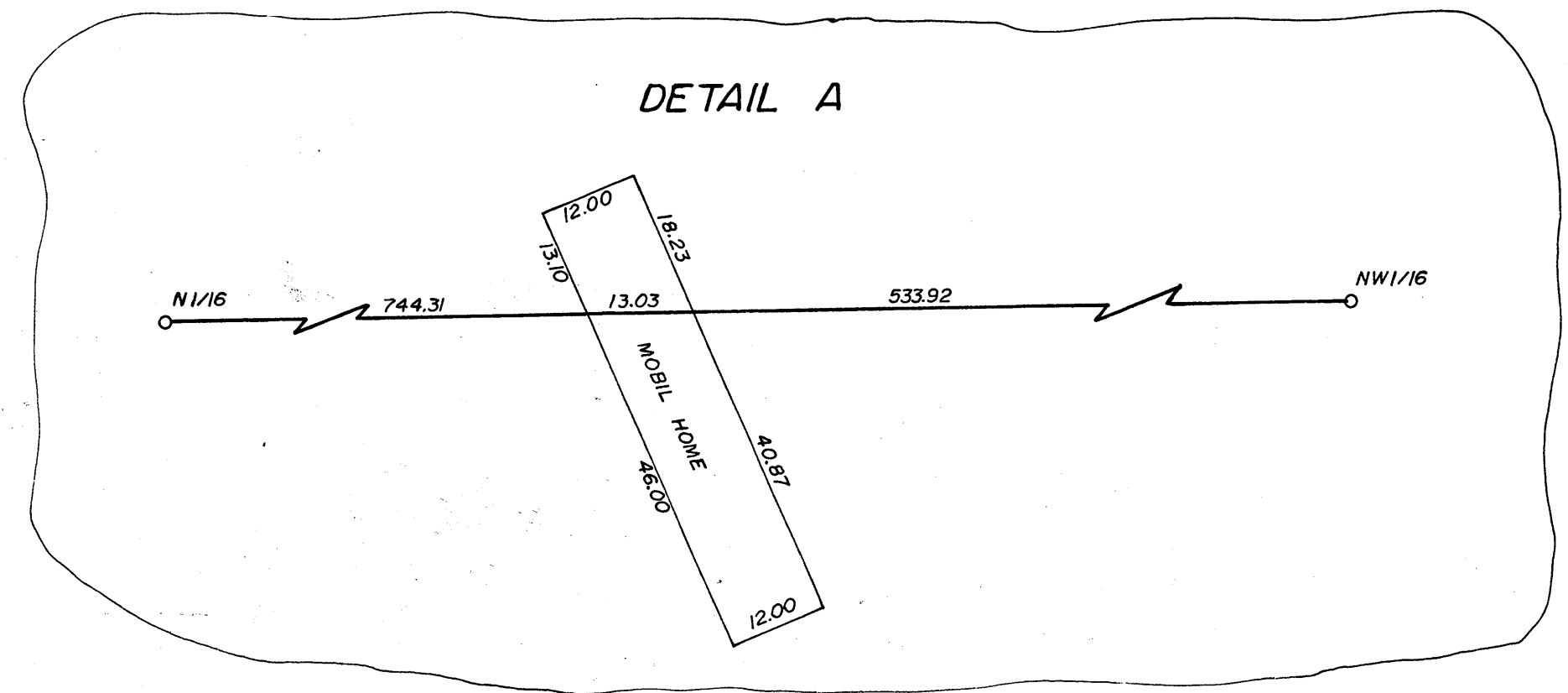
1920-1921 E.B. Horst found some original evidence for some of the corners and set posts. 1922 E.B. Horst, County Surveyor made a County Resurvey Plat and preserved the east line of section 27 with iron pipes. 1928 John M. Green County Surveyor made surveys on the south and east lines and set corners around part of section 27, some corners were set from original evidence and some were set proportionally. 1942 Jown W. Curo made a survey showing he found Horst's post at the northwest corner. 1959 Harold Curo found Horst's post and set a 2"x60" pipe with brass cap. 1961 Peter Meyer USFS Surveyor found the place. Mr. Meyer also found the original BT's for the Meander Corner and set a 6"x60" concrete monument for this corner. He then proceeded to establish corners along this line by prorating the distance from the Southwest Corner to the Northwest Corner ignoring the Meander Corner. The Manual for the Restoration of Lost or Obliterated Corners, 1953 Edition, originally established and then identified, will control in the restoration of lost quarter corners. 1987 Curo Surveying ran a traverse around section 27 tying into all of the U.S.F.S. corners set by Mr. Meyer, and all of the other corners. Our closure ratio was 1:47000. Our measurements between the corners along the west line of section 27 closely matched Mr. Meyers Certificate of Survey. We then ran the North and South Sixteenth lines before we discovered that Mr. Meyers had misinterpreted the rules for establishing the lost quarter corner. We then reran the Sixteenth lines as shown on this Certificate.

Bearings for this subdivision were established from Solar observations taken on January 6, 1988 from a traverse control point to the East Quarter Corner of Section 27.

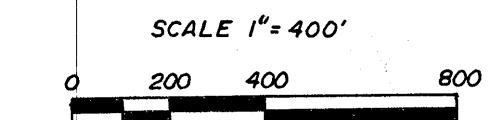
A copy of all of the survey notes on this survey are on file in the Forest Supervisors Office, Cass Lake, Minnesota.

I hereby certify that this document was filed in the office of the County Recorder this \_\_\_\_\_ day of \_\_\_\_\_, 1988, at \_\_\_\_\_ o'clock \_\_\_\_\_ and assigned document number \_\_\_\_\_ Book \_\_\_\_\_ Plats, Page \_\_\_\_\_.

Claudine Kaylor, County Recorder, Cass County, Mn.



- LEGEND**
- ⊙ 2" x 48" iron pipe with aluminum shaft with 3" cap inserted over it
  - ⊙ 2" x 50.5" galv. iron pipe with plastic base and 3" brass cap set
  - ⊙ 2" x 60" galv. iron pipe with 3" brass cap found in place
  - ⊙ 4" diam. x 60" Concrete monument with 3" brass cap found in place
  - Section subdivision lines
  - Property boundary lines posted
  - Book and page numbers are place of deed recordation in the County Recorders Office.



CURD SURVEYING, HACKENSACK, MINN. 56452