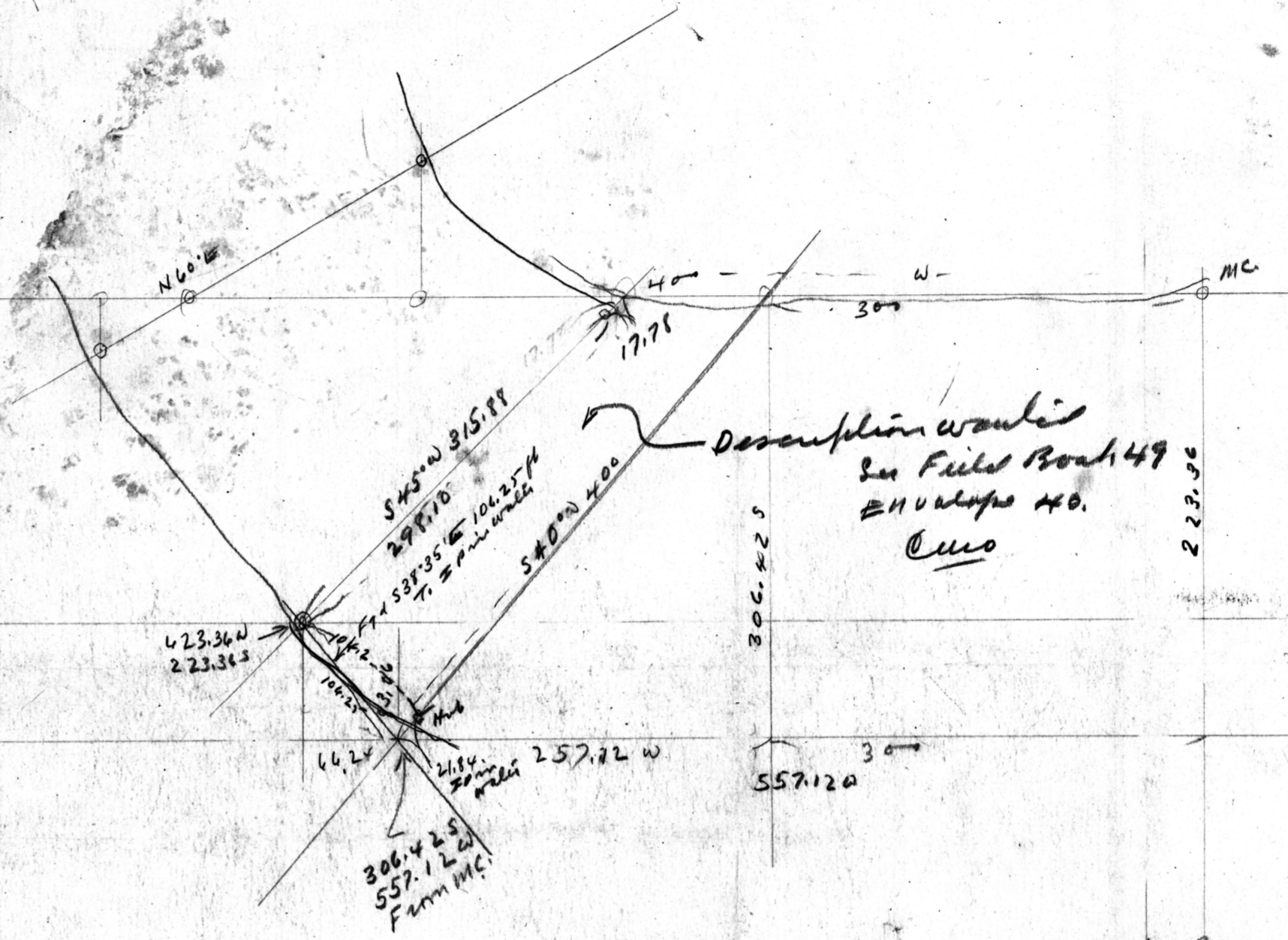


Keep Fox Lake 1-D
 Figuring Dec 20-
 1935



Description wants
 See Field Book 49
 Envelope #40
 Cms

257.12
 223.36
 306.42

$S 40^{\circ} W 400$
 $SIN 64.279 \times 400 = 257.12 + 300 = 557.12$
 COS
 $300 \times 400 = 306.42$
 306.42
 223.36
 557.12
 883.16

Beg 400 W of MC Run
 $S 45^{\circ} W 315.88 = 223.36 W + 400 = 623.36 W$
 $SIN 70.711 \times 315.88 = 223.36 S$
 $COS 70.711 \times 315.88 = 223.36 S$

Beg 700 W of MC Run
 $S 60^{\circ} W 72.2$
 $SIN 86.603 \times 72.2 = 62.53 W + 700 = 762.53 W$
 $COS 5000 \times 72.2 = 36.10 S$
 $N 60^{\circ} E 176.2$
 $SIN 86.603 \times 176.2 = 161.25 E$
 $COS 5000 \times 176.2 = 93.10 H$

$623.36 W$
 557.12
 66.24

17.78
 298.90
 315.88

223.36
 306.42
 306.42

Dec 20-1935 Harry Keep
 Field Book 49 - Envelope #40