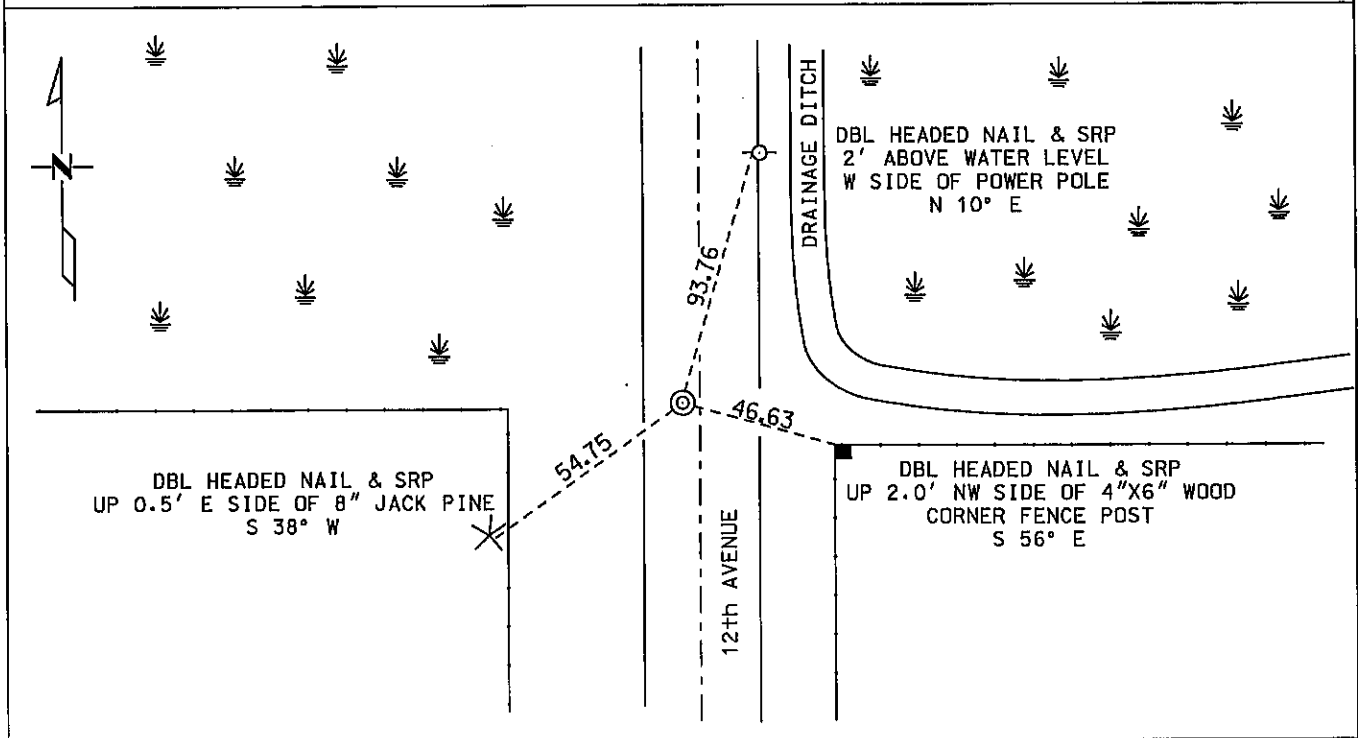


# CERTIFICATE OF LOCATION OF GOVERNMENT CORNER

EAST QUARTER Corner of Section 20, Township 137 N, Range 29 W  
5 TH Principal Meridian, State of Minnesota, County of CASS

At the corner location shown on the sketch:

- On 1-29-03 found a RR SPIKE FLUSH WITH BIT. SURFACE  
DATE 2' +/- WEST OF CL 12 TH AVENUE
- left monument as found     lowered monument     removed monument (explain)
- On \_\_\_\_\_ placed a \_\_\_\_\_  
DATE



Statement of evidence for this corner location is on back of this page.

I hereby certify that this document was researched and prepared by me or under my direct supervision.

Signature \_\_\_\_\_ Date \_\_\_\_\_ License No. 40343  
Kevin J. Metz MNDOT  
 Title:     Land Surveyor     Professional Engineer     County Surveyor     County Engineer

**Statement of Evidence:** East Quarter Corner of Section 20, Township 137 North, Range 29 West, 5<sup>th</sup> Principal Meridian, Cass County, Minnesota.

The original public land survey was run in 1865, and a wood post was used to mark the corner. One bearing tie was made.

On 01-29-2003, the Minnesota Department of Transportation found a railroad spike flush with the bituminous surface and approximately two feet West of the centerline of 12<sup>th</sup> Avenue. Three new bearing ties were taken. The Minnesota Department of Transportation accepts this monument as the correct location for the Corner.

For details and survey analysis, contact the Minnesota Department of Transportation District Surveys Office in Baxter, Minnesota.