

CERTIFICATE OF SURVEY

FOR: MINNESOTA POWER
P.O. NO. 5311013432

PART OF SECTION 8 TOWNSHIP 138 NORTH,
RANGE 31 WEST OF THE 5TH PRINCIPAL MERIDIAN,
CASS COUNTY, MINNESOTA

EASEMENT LEGAL DESCRIPTION

A 120.00 foot easement for utility purposes over, under and across The Southeast Quarter of the Northeast Quarter, Section 8, Township 138 North, Range 31 West of the Fifth Principal Meridian, Cass County, Minnesota, with a centerline described as follows:

Commencing at the East Quarter corner of said Section 8; thence North 0 degrees 24 minutes 27 seconds East along the East line of said Section 8, a distance of 521.66 feet to the point of beginning of the centerline to be described; thence North 59 degrees 43 minutes 53 seconds West, a distance of 82.82 feet; thence North 58 degrees 47 minutes 54 seconds West, a distance of 980.02 feet; thence North 58 degrees 44 minutes 50 seconds West, a distance of 378.66 feet to the north line of said Southeast Quarter of the Northeast Quarter and said easement centerline there terminates.

The sidelines of said easement are to be prolonged or shortened to terminate on the north line, on the west line, and on the east line of said Southeast Quarter of the Northeast Quarter.

SURVEYOR'S CERTIFICATE

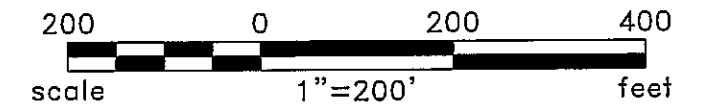
I HEREBY CERTIFY THAT THIS SURVEY, PLAN OR REPORT WAS PREPARED BY ME OR UNDER MY DIRECT SUPERVISION AND THAT I AM A DULY LICENSED LAND SURVEYOR UNDER THE LAWS OF THE STATE OF MINNESOTA.

Jarrett M. Leas
JARRETT M. LEAS, MINNESOTA LICENSE NO. 42619

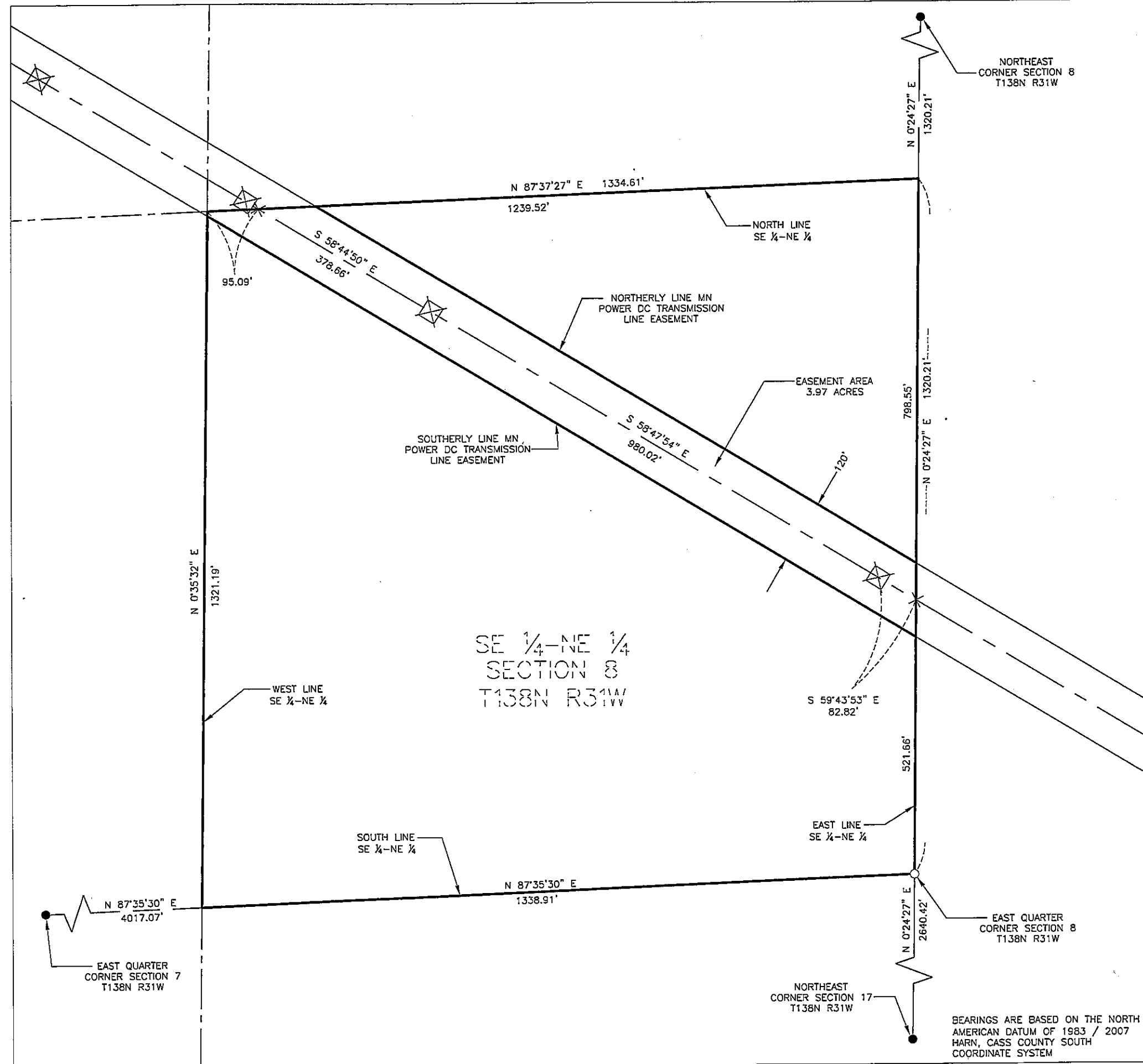
12-13-12
DATE

LEGEND

- ⊠ = DC Transmission Line Structure
- = Found Monument
- = Set Monument, PLS 42619
- = Minnesota Power Right-Of-Way
- - - = Transmission Center Line
- = Section Line
- - - = Quarter Section Line
- - - = Sixteenth Section Line
- = Property Line



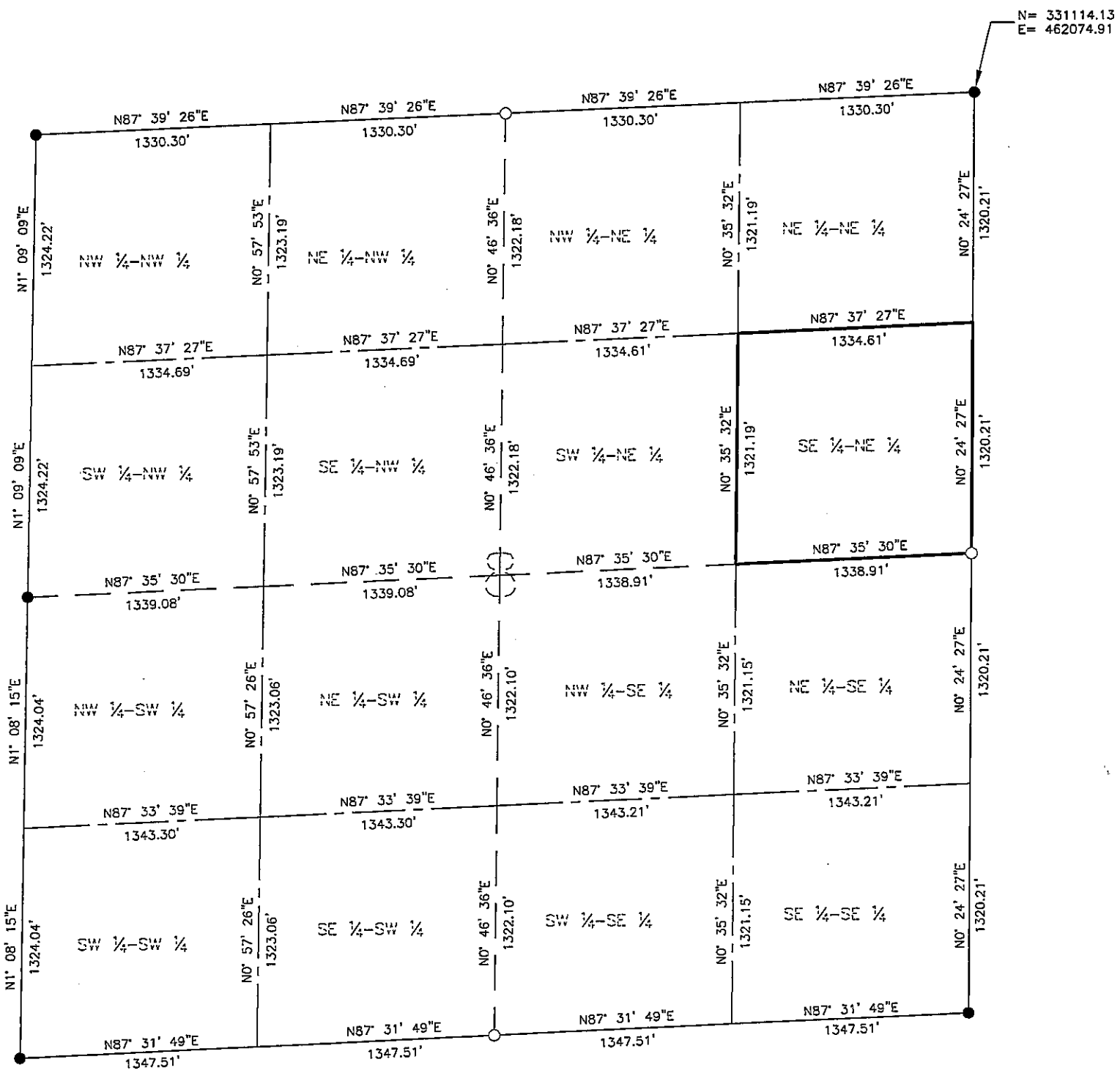
Rev'd.	Cass County, MN MINNESOTA POWER Duluth, MN	SHEET NO. 1 of 2
	SE 1/4 - NE 1/4 SECTION 8 T138N R31W PROJECT PARCEL NO. 9	
	DRWN. BY CAM	CHK'D BY JML
	PROJECT NO. 51612100	LAST REVISED 11/27/2012
Plotted-11/27/2012-4:28pm		(Layout1) © KLJ 2012



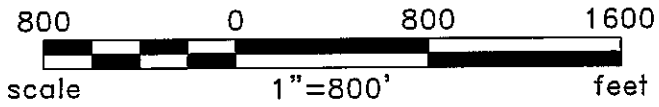
BEARINGS ARE BASED ON THE NORTH AMERICAN DATUM OF 1983 / 2007 HARN, CASS COUNTY SOUTH COORDINATE SYSTEM

CERTIFICATE OF SURVEY

SECTION 8 TOWNSHIP 138 NORTH,
RANGE 31 WEST OF THE 5TH PRINCIPAL MERIDIAN,
CASS COUNTY, MINNESOTA



- LEGEND**
- = Found Monument
 - = Set Monument, PLS 42619
 - = Section Line
 - - - = Quarter Section Line
 - - - - = Sixteenth Section Line



BEARINGS ARE BASED ON THE NORTH AMERICAN DATUM OF 1983 / 2007 HARN, CASS COUNTY SOUTH COORDINATE SYSTEM

Rev'd.		Cass County, MN		SHEET NO.	
		MINNESOTA POWER		2 of 2	
		Duluth, MN			
		SECTION 8			
		T138N R31W			
PROJECT PARCEL NO. 9		DRWN. BY	CHK'D BY	PROJECT NO.	LAST REVISED
		CAM	JML	51612100	11/27/2012
					(Layout1)
Plotted-11/27/2012-4:28pm					© KLJ 2012