

Index No. R-19

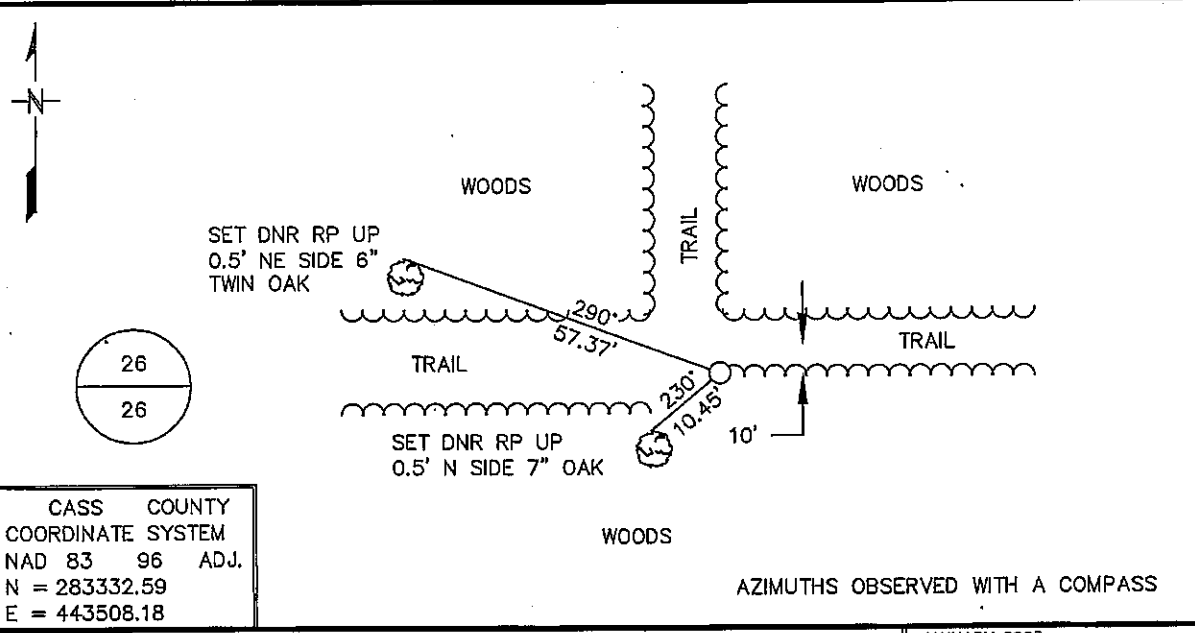
# CERTIFICATE OF LOCATION OF GOVERNMENT CORNER

NORTH QUARTER Corner of Section 26, Township 137 N, Range 32 W

5TH Principal Meridian, State of Minnesota, County of CASS

At the corner location shown on the sketch:

- On \_\_\_\_\_ found a \_\_\_\_\_  
DATE
- left monument as found,  lowered monument,  removed monument (explain)
- On 10/26/04 Placed a 3/4" IRON ROD WITH SURVEY CAP IN CENTERLINE  
DATE TRAIL WEST, 10' SOUTH OF CENTERLINE TRAIL EAST



Statement of evidence for this corner location is on-back of this page. JANUARY 2005  
SFT00019

I certify that this document was researched and prepared by me or under my direct supervision.

SIGNATURE \_\_\_\_\_ DATE \_\_\_\_\_ License Number 16098

Title:  Land Surveyor  Professional Engineer  County Surveyor  County Engineer

**North Quarter Corner Section 26, Township 137 North, Range 32 West**

The Department of Natural Resources, Division of Lands and Minerals, contacted the following offices for information regarding this corner:

MN Secretary of State  
MN Department of Transportation  
Cass County Highway Department  
Cass County Surveyor  
Cass County Auditor  
Cass County Recorder

- 1870 The US General Land Office field notes, on file in the Secretary of State's Office, show this corner to be marked with a post and bearing trees.
- 1913 John Curo, Cass County Surveyor, in a resurvey of many sections in this township, found the Northeast and Northwest corners of Section 26 but was unable to locate this corner. By single proportion method he set a 2 ½" x 48" galvanized iron pipe. Iron pipe has capped top and stated as the true corner.
- 2002 In October, the DNR survey crew searched for evidence of the corner and found a 2 ½ x 48" iron pipe lying down in the north ditch of an east-west trail. A spike was set in the centerline of the trail and in line with the edge of woods north at a lost position.
- 2004 In October, the DNR returned to the corner and replaced the spike with a DNR survey marker.

For more information on our survey in this area, please contact MN DNR, Division of Lands and Minerals, Survey Section, 1601 Minnesota Drive, Brainerd, MN 56401