

CERTIFICATE OF LOCATION OF GOVERNMENT CORNER

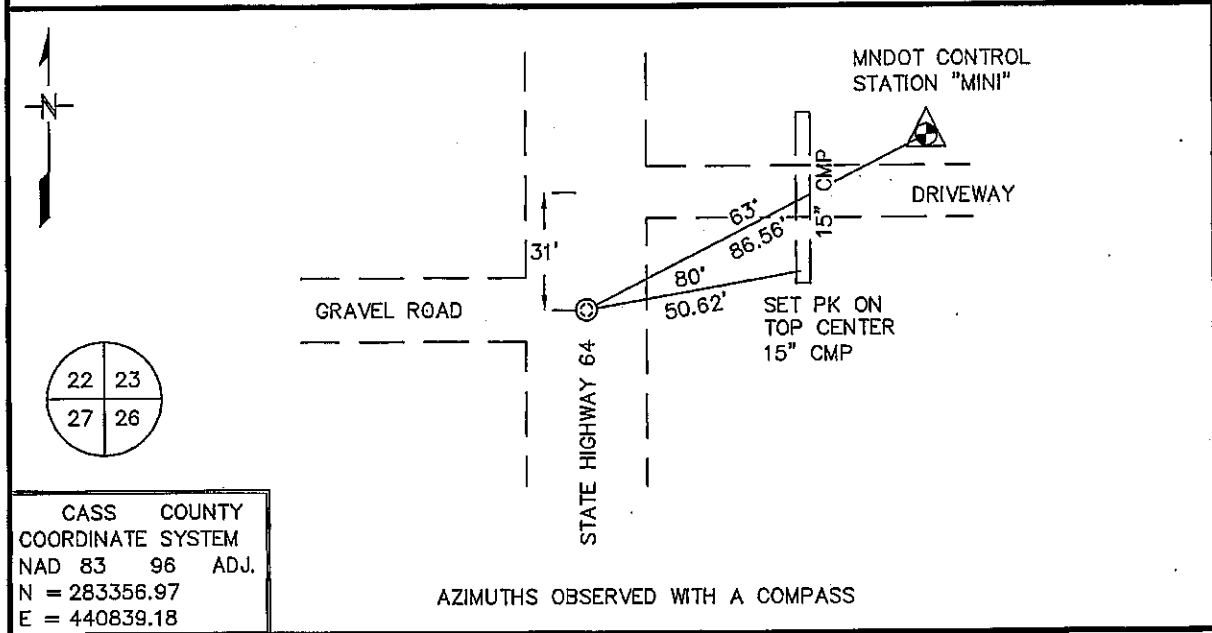
NORTHEAST Corner of Section 27, Township 137 N, Range 32 W
5TH Principal Meridian, State of Minnesota, County of CASS

At the corner location shown on the sketch:

On _____ found a _____
DATE

left monument as found, lowered monument, removed monument (explain)

On 7/29/04 Placed a PK AT THE INTERSECTION OF CENTERLINE NORTH-SOUTH
DATE ROAD AND GRAVEL ROAD WEST, 31' SOUTH CENTERLINE DRIVEWAY EAST



CASS COUNTY
 COORDINATE SYSTEM
 NAD 83 96 ADJ.
 N = 283356.97
 E = 440839.18

Statement of evidence for this corner location is on back of this page. JANUARY 2005
SFT00019

I certify that this document was researched and prepared by me or under my direct supervision.

SIGNATURE _____ DATE _____ License Number 16098

Title: Land Surveyor Professional Engineer County Surveyor County Engineer

Northeast Corner Section 27, Township 137 North, Range 32 West

The Department of Natural Resources, Division of Lands and Minerals, contacted the following offices for information regarding this corner:

MN Secretary of State
MN Department of Transportation
Cass County Highway Department
Cass County Surveyor
Cass County Auditor
Cass County Recorder

- 1870 The US General Land Office field notes, on file in the Secretary of State's Office, show this corner to be marked with a post and bearing trees.
- 1913 John Curo, Cass County Surveyor, in a resurvey of many sections in this township, found a temporary corner set by N.W. Hicks on June 22, 1905 and placed a red flag for the location. Curo used the red flag for the basis of traversing to find other corners. After other corners were found, Curo used a double proportion method of re-establishing the corner location which was 0.72' west and 0.42' south of the red flag location. A 2 1/2" x 48" galvanized iron pipe capped on top and anchor rod through bottom was set its full length in the north-south graded wagon road. He measured 2627.52' to the E 1/4 corner Section 23, 2627.84' to the N 1/4 corner Section 26 and 2627.52' to the E 1/4 corner Section 27.
- 19?? MNDOT construction plan for State Highway 64 show an in place iron pipe at intersection of centerline State Highway 64 and centerline road west. A distance of 5252.60' was listed to the Northeast Corner of Section 22.
- 2002 In October, the DNR survey crew searched for evidence of the corner and found a metal attraction at the intersection of State Highway 64 at centerline road west.
- 2004 In July, the DNR returned to the corner and set a PK nail over the metal attraction at the centerline intersection. This position was accepted as the corner.

For more information on our survey in this area, please contact MN DNR, Division of Lands and Minerals, Survey Section, 1601 Minnesota Drive, Brainerd, MN 56401