

**CERTIFICATE OF LOCATION OF GOVERNMENT CORNER**

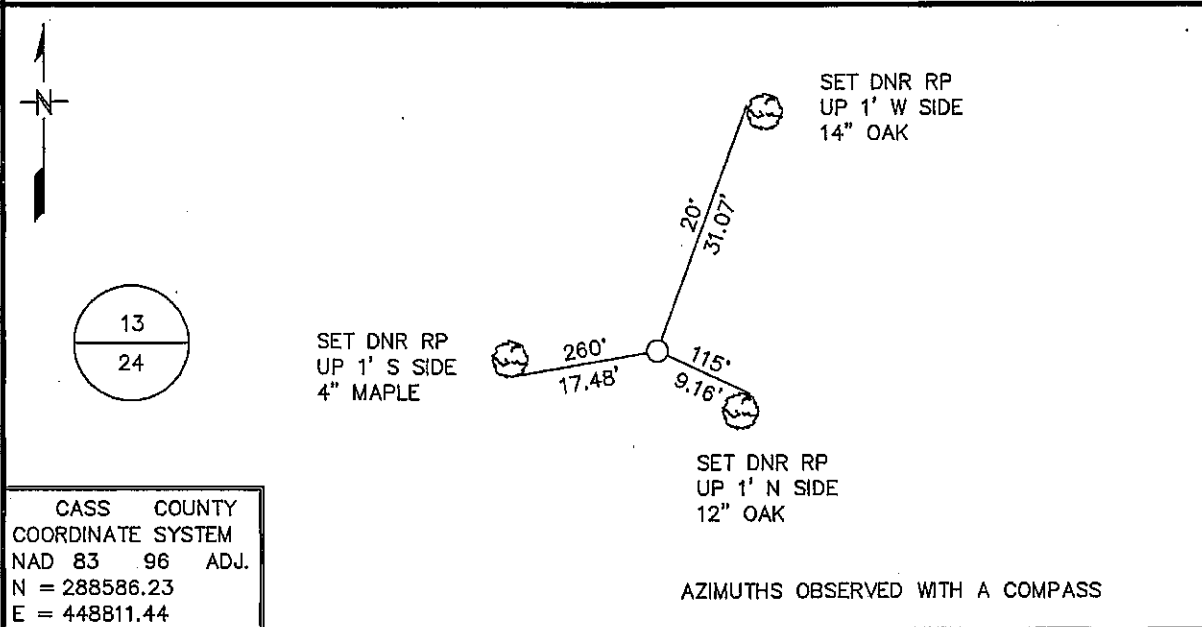
NORTH QUARTER Corner of Section 24, Township 137 N, Range 32 W  
5TH Principal Meridian, State of Minnesota, County of CASS

At the corner location shown on the sketch:

On \_\_\_\_\_ found a \_\_\_\_\_  
DATE

left monument as found,     lowered monument,     removed monument (explain)

On 8/02/04 Placed a 3/4" IRON ROD WITH SURVEY CAP IN WOODS  
DATE



Statement of evidence for this corner location is on back of this page. JANUARY 2005  
SFT00019

I certify that this document was researched and prepared by me or under my direct supervision.

SIGNATURE \_\_\_\_\_ DATE \_\_\_\_\_ License Number 16098

Title:     Land Surveyor     Professional Engineer     County Surveyor     County Engineer

**North Quarter Corner Section 24, Township 137 North, Range 32 West**

The Department of Natural Resources, Division of Lands and Minerals, contacted the following offices for information regarding this corner:

MN Secretary of State  
MN Department of Transportation  
Cass County Highway Department  
Cass County Surveyor  
Cass County Auditor  
Cass County Recorder

1870 The US General Land Office field notes, on file in the Secretary of State's Office, show this corner to be marked with a post and the following bearing trees were marked:

White Pine 22" N 11° W 20 links (13.20')  
Norway Pine 18" S 9° W 50 links (33')

2002 In October, the DNR survey crew searched for evidence of the corner and found nothing.

2004 In August, the DNR survey crew set the corner at a lost position on line between the Northwest and computed Northeast corners of Section 24, distant 2640.00' easterly of the Northwest corner of Section 24.

For more information on our survey in this area, please contact MN DNR, Division of Lands and Minerals, Survey Section, 1601 Minnesota Drive, Brainerd, MN 56401