

Index No. N-21

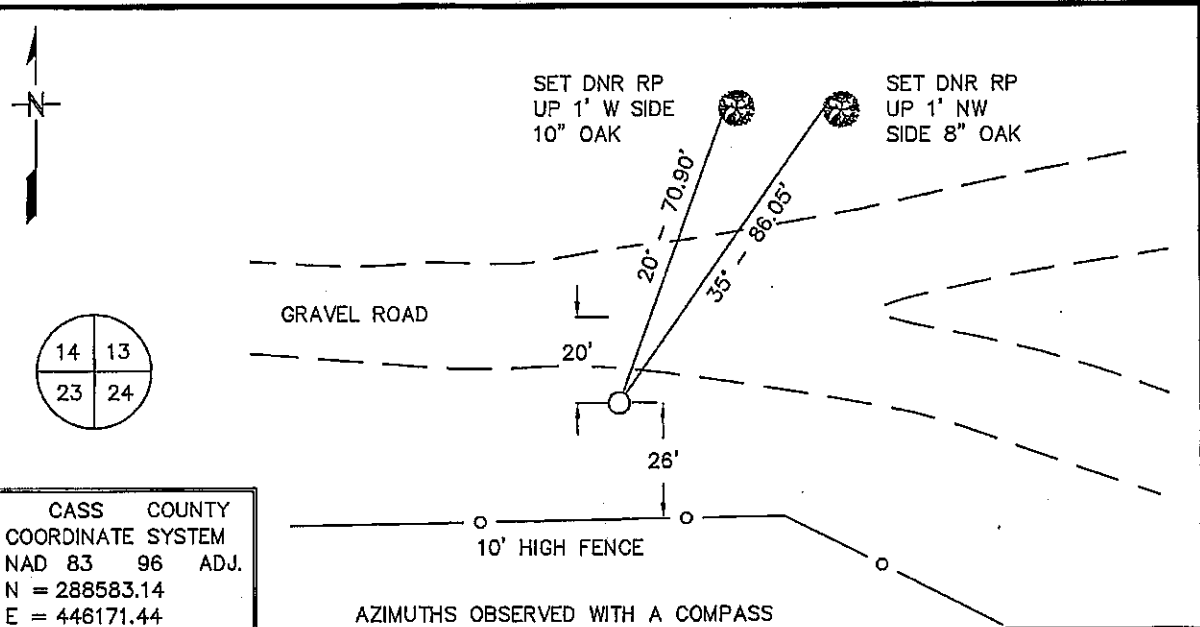
CERTIFICATE OF LOCATION OF GOVERNMENT CORNER

NORTHEAST Corner of Section 23, Township 137 N, Range 32 W

5TH Principal Meridian, State of Minnesota, County of CASS

At the corner location shown on the sketch:

- On _____ found a _____
DATE
- left monument as found, lowered monument, removed monument (explain)
- On 8/02/04 Placed a 3/4" IRON ROD WITH SURVEY CAP
DATE
20' SOUTH OF CENTERLINE ROAD



CASS COUNTY
COORDINATE SYSTEM
NAD 83 96 ADJ.
N = 288583.14
E = 446171.44

Statement of evidence for this corner location is on back of this page.

JANUARY 2005
SFT00019

I certify that this document was researched and prepared by me or under my direct supervision.

SIGNATURE _____ DATE _____ License Number 1609B

Title: Land Surveyor Professional Engineer County Surveyor County Engineer

Northeast Corner Section 23, Township 137 North, Range 32 West

The Department of Natural Resources, Division of Lands and Minerals, contacted the following offices for information regarding this corner:

MN Secretary of State
MN Department of Transportation
Cass County Highway Department
Cass County Surveyor
Cass County Auditor
Cass County Recorder

1870 The US General Land Office field notes, on file in the Secretary of State's Office, show this corner to be marked with a post and the following bearing trees were marked:

Balsam 8" S 67° E 17 links (11.22')
Balsam 5" N 12 ½° E 17 links (11.22')
Aspen 10" N 58 ½° W 7 links (4.62')
Aspen 14" S 68 ½° W 44 links (29.04')

1916 E.B. Horst, Cass County Surveyor, in a resurvey of Ansel Township, searched for evidence of the corner and found nothing. Horst found the Northeast Corner Section 11 and the Northeast Corner Section 26. He double proportioned in the Northeast corner Section 14 and established a distance of 5275.57' to be applied to the section lines between the found corners. Nothing was set for the corner location.

2002 In October, the DNR survey crew searched for evidence of the corner and located an east-west road.

For more information on our survey in this area, please contact MN DNR, Division of Lands and Minerals, Survey Section, 1601 Minnesota Drive, Brainerd, MN 56401