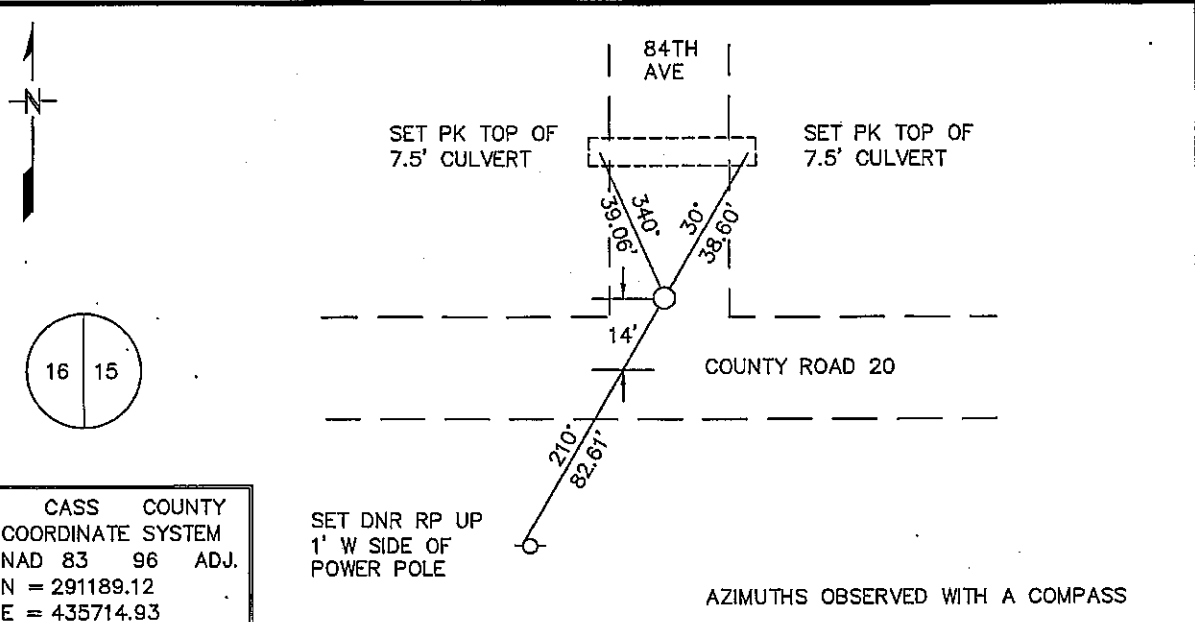


# CERTIFICATE OF LOCATION OF GOVERNMENT CORNER

EAST QUARTER Corner of Section 16, Township 137 N, Range 32 W  
5TH Principal Meridian, State of Minnesota, County of CASS

At the corner location shown on the sketch:

- On 9/23/03 found a 1" IRON PIPE DOWN 16" IN CENTERLINE NORTH-SOUTH ROAD, 14' NORTH OF CENTERLINE EAST-WEST ROAD  
DATE
- left monument as found,  lowered monument,  removed monument (explain)
- On 7/26/04 Placed a 3/4" IRON ROD WITH SURVEY CAP ON TOP OF PIPE DOWN 0.2'  
DATE



Statement of evidence for this corner location is on back of this page. JANUARY 2005 SFT00019

I certify that this document was researched and prepared by me or under my direct supervision.

SIGNATURE \_\_\_\_\_ DATE \_\_\_\_\_ License Number 16098  
Title:  Land Surveyor  Professional Engineer  County Surveyor  County Engineer

**East Quarter Corner Section 16, Township 137 North, Range 32 West**

The Department of Natural Resources, Division of Lands and Minerals, contacted the following offices for information regarding this corner:

MN Secretary of State  
MN Department of Transportation  
Cass County Highway Department  
Cass County Surveyor  
Cass County Auditor  
Cass County Recorder

1870 The US General Land Office field notes, on file in the Secretary of State's Office, show this corner to be marked with a post and the following bearing trees were marked:

Tam. 6"	S48°W	7 links
Tam. 6"	N79°E	73 links

1913 John Curo, Cass County Surveyor, in a resurvey of many sections in this township, found an old post set in the center of the east-west graded wagon road set by N.W. Hicks, Deputy Cass County Surveyor. Curo checks on the stake and finds it correct and drives the stake more solidly into the ground. At a later date Curo pulled the stake and set a 2 1/2" x 48" galvanized iron pipe capped on top and set in the center of east-west road.

1964 Cass County Highway Dept. Construction plan for C.S.A.H. 20, show the corner location assumed as 14' north of the newly constructed intersection of centerline C.S.A.H. 20 at centerline County Road 111. The assumed station for the corner is 270+37.3. The plan showed the new road 14' south of the old road. Nothing is indicated if corner was found or set.

2003 In September, the DNR survey crew searched for evidence of the corner and found an iron pipe. The iron pipe was accepted as the corner and a DNR survey marker was set over the pipe to perpetuate its position.

For more information on our survey in this area, please contact MN DNR, Division of Lands and Minerals, Survey Section, 1601 Minnesota Drive, Brainerd, MN 56401