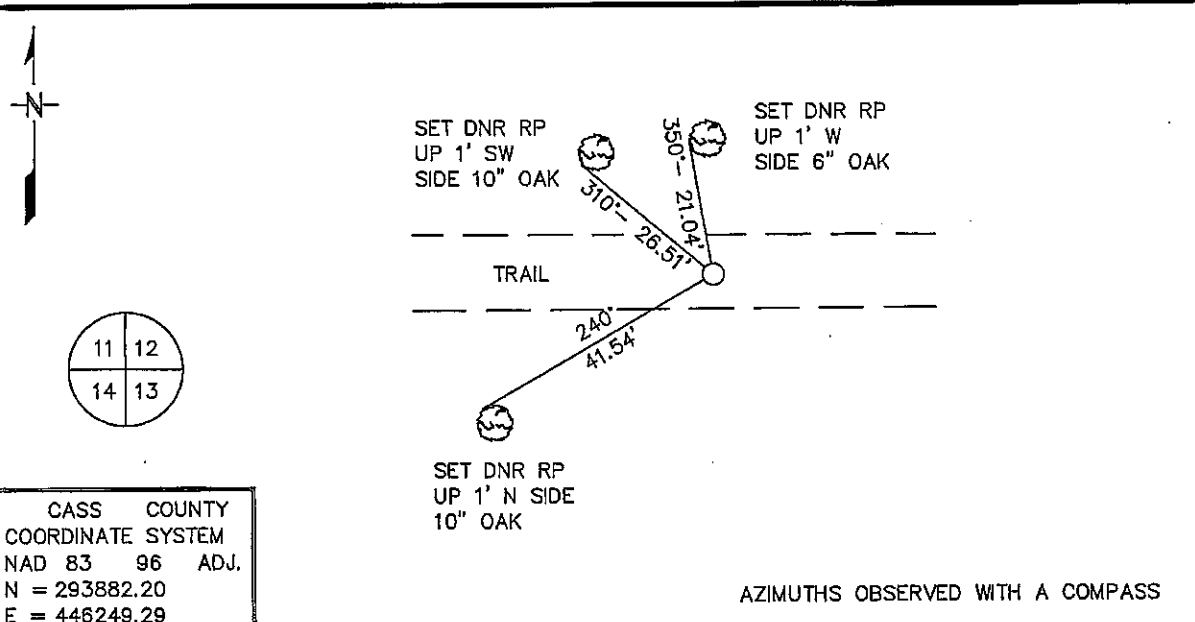


# CERTIFICATE OF LOCATION OF GOVERNMENT CORNER

NORTHEAST Corner of Section 14, Township 137 N, Range 32 W  
5TH Principal Meridian, State of Minnesota, County of CASS

At the corner location shown on the sketch:

- On \_\_\_\_\_ found a \_\_\_\_\_  
DATE
- left monument as found,  lowered monument,  removed monument (explain)
- On 8/03/04 Placed a 3/4" IRON ROD WITH SURVEY CAP  
DATE  
IN CENTERLINE EAST-WEST TRAIL



CASS COUNTY  
COORDINATE SYSTEM  
NAD 83 96 ADJ.  
N = 293882.20  
E = 446249.29

AZIMUTHS OBSERVED WITH A COMPASS

Statement of evidence for this corner location is on back of this page. JANUARY 2005  
SFT00019

I certify that this document was researched and prepared by me or under my direct supervision.

SIGNATURE \_\_\_\_\_ DATE \_\_\_\_\_ License Number 16098  
 Title:  Land Surveyor  Professional Engineer  County Surveyor  County Engineer

**Northeast Corner Section 14, Township 137 North, Range 32 West**

The Department of Natural Resources, Division of Lands and Minerals, contacted the following offices for information regarding this corner:

MN Secretary of State  
MN Department of Transportation  
Cass County Highway Department  
Cass County Surveyor  
Cass County Auditor  
Cass County Recorder

1870 The US General Land Office field notes, on file in the Secretary of State's Office, show this corner to be marked with a post and the following bearing trees were marked:

Aspen 14" S 83° E 24 links (15.84')  
Maple 6" N 67° E 17 links (11.22')  
White Birch 8" N 55 ½° W 21 links (13.86')  
Aspen 16" S 82 ½° W 34 links (22.44')

1916 E.B. Horst, Cass County Survey Office, in a resurvey of Ansel Township, looked at every tree and stump within 300' of where the corner should be and found nothing. Horst found the Northeast Corner Section 11 and the Northeast Corner Section 26. By double proportion method he established a distance of 5275.57' to be applied to the section lines between the found corners. He set a wood post for the location of the corner and made new bearing trees as follows:

Poplar 10" N 29°30' E 93.8'  
Oak 10" N 61°30' W 79.3'  
Poplar 5" S 32°45' W 44.7'  
Poplar 10" S 51°25' E 51.2'

1917 E.B. Horst set an iron monument for the location of the corner.

2002 In October, the DNR survey crew searched for evidence of the corner and found nothing. The corner was established by double proportion.