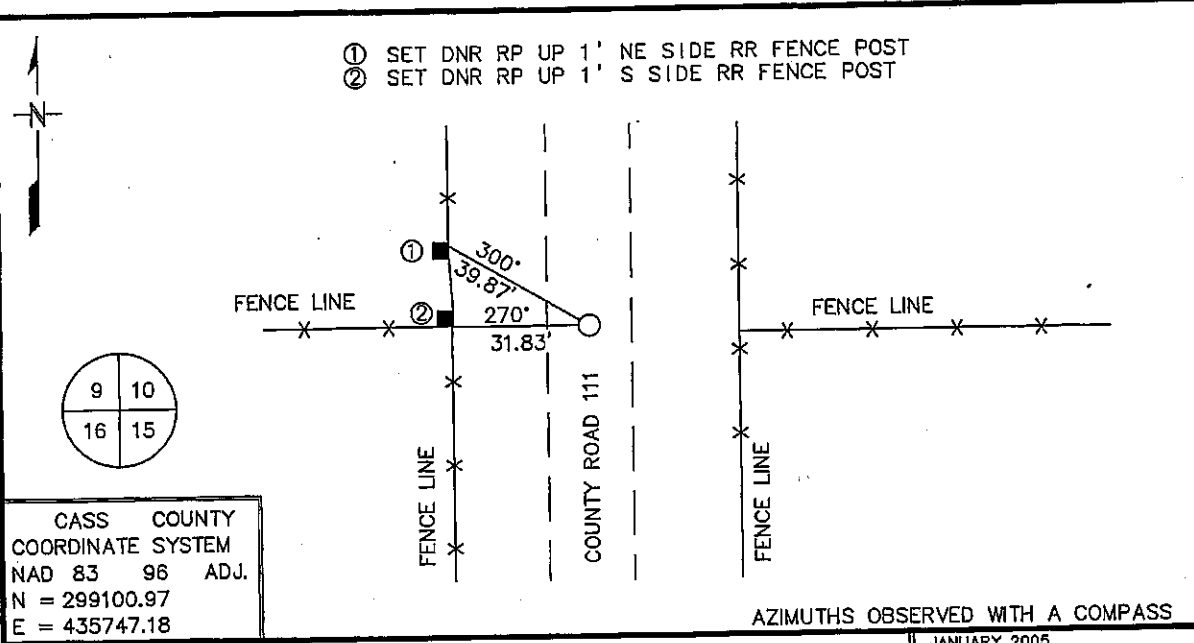


CERTIFICATE OF LOCATION OF GOVERNMENT CORNER

NORTHEAST Corner of Section 9, Township 137 N, Range 32 W
5TH Principal Meridian, State of Minnesota, County of CASS

At the corner location shown on the sketch:

- On _____ found a _____
DATE
- left monument as found, lowered monument, removed monument (explain)
- On 7/27/04 Placed a 3/4" IRON ROD WITH SURVEY CAP AT INTERSECTION
DATE
OF CENTERLINE NORTH-SOUTH ROAD AND FENCES EAST & WEST



Statement of evidence for this corner location is on back of this page. JANUARY 2005
SFT00019

I certify that this document was researched and prepared by me or under my direct supervision.

SIGNATURE _____ DATE _____ License Number 16098
 Title: Land Surveyor Professional Engineer County Surveyor County Engineer

Northeast Corner Section 9, Township 137 North, Range 32 West

The Department of Natural Resources, Division of Lands and Minerals, contacted the following offices for information regarding this corner:

MN Secretary of State
 MN Department of Transportation
 Cass County Highway Department
 Cass County Surveyor
 Cass County Auditor
 Cass County Recorder

1870 The US General Land Office field notes, on file in the Secretary of State's Office, show this corner to be marked with a post and the following bearing trees were marked:

Ash	8"	S13°E	28 Links
Oak	5"	N45 ½ °E	43
Dead Elm	16"	N62 ½ °W	45
Blk Ash	8"	S61°W	62

1918 Survey Record book 236 shows I.P. at the corner.

2003 In March, the DNR survey crew searched for evidence of the corner and found the centerline of a north-south road and fence lines east and west. No other evidence of the corner was found. A DNR survey marker was set at the intersection of the road and fence lines marking the obliterated position of the corner.

For more information on our survey in this area, please contact MN DNR, Division of Lands and Minerals, Survey Section, 1601 Minnesota Drive, Brainerd, MN 56401