

CO. RD. 127

LEO. M. WITTHOEF
HATTIE R. WITTHOEF
2.4± ACRES
SEPTEMBER 16 1959
BOOK 121 PAGE 77
DOCUMENT NO 162 740

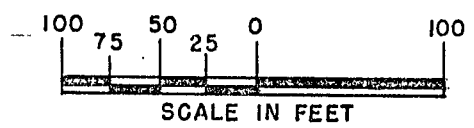
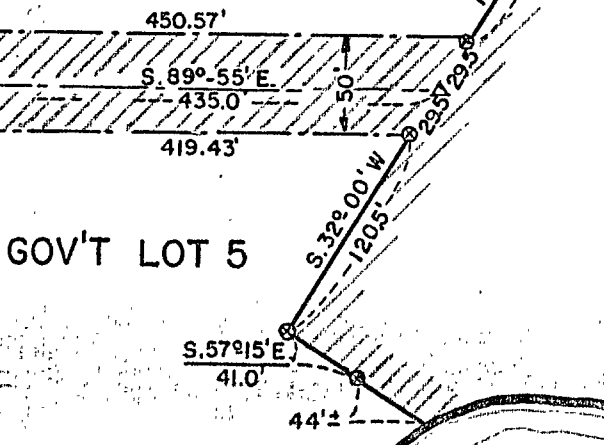
25' 25'

N. 0°46'E.
552.3

GOV'T LOT 5

2.4± ACRES

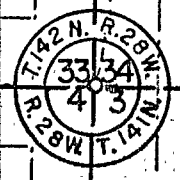
TOWN LINE LAKE
WS. ELEV. 142.94 1-22-59
685 ACRES



SCALE IN FEET

- ⊙ IRON MARKER SET
- IRON MARKER IN PLACE
- △ TRAVERSE POINT

PROPERTY OF
STATE OF MINNESOTA



MINNESOTA CONSERVATION DEPARTMENT		
DIVISION OF GAME & FISH		
PUBLIC ACCESS PROPERTY MAP		
TOWN LINE LAKE		
CASS CO. - NEAR LONGVILLE		
SEC. 34	T. 142 N. R. 28 W.	5TH. P.M.
DRAW 2-5-59 CG.	BUREAU OF ENGINEERING	SURVEY 1/20-21
CHECKED 2-17-59 J.K.	<i>R. J. [Signature]</i> 2-19-59 ENGR. SUPV	A.G.C.
REVISED		DATUM PROJECT

REQ.
59-73

32

FILE
A-724