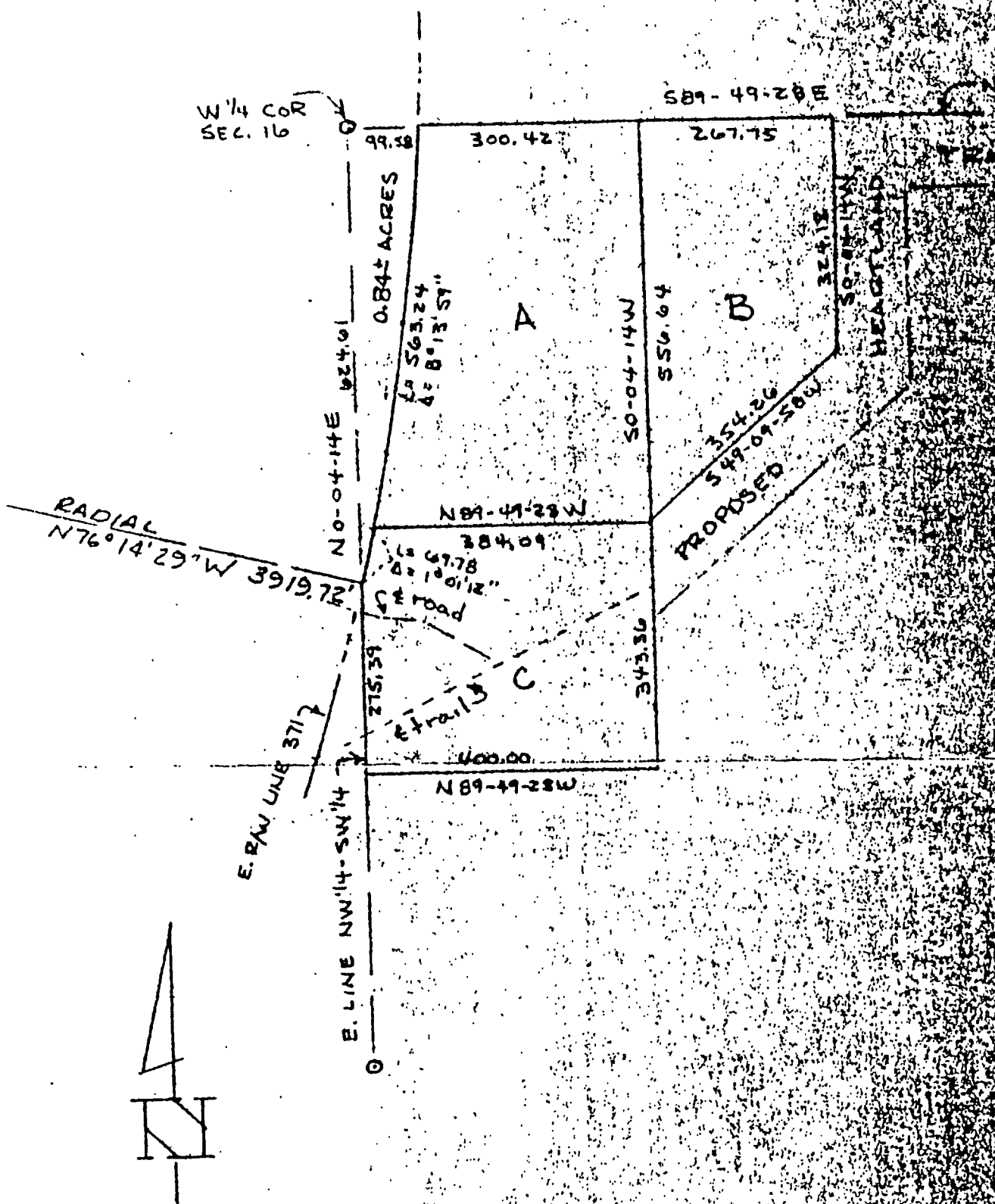


SKETCH FOR STAN PETERSON

PART OF NW¹/₄ SW¹/₄, S. 16, T. 143N, R. 31W
 CASS COUNTY, MN.



SCALE: 1" = 200'

ORIENTATION OF THIS BEARING SYSTEM IS ASSUMED

TRACT A = 4.29 ± ACRES

TRACT B = 2.71 ± ACRES

TRACT C = 3.13 ± ACRES