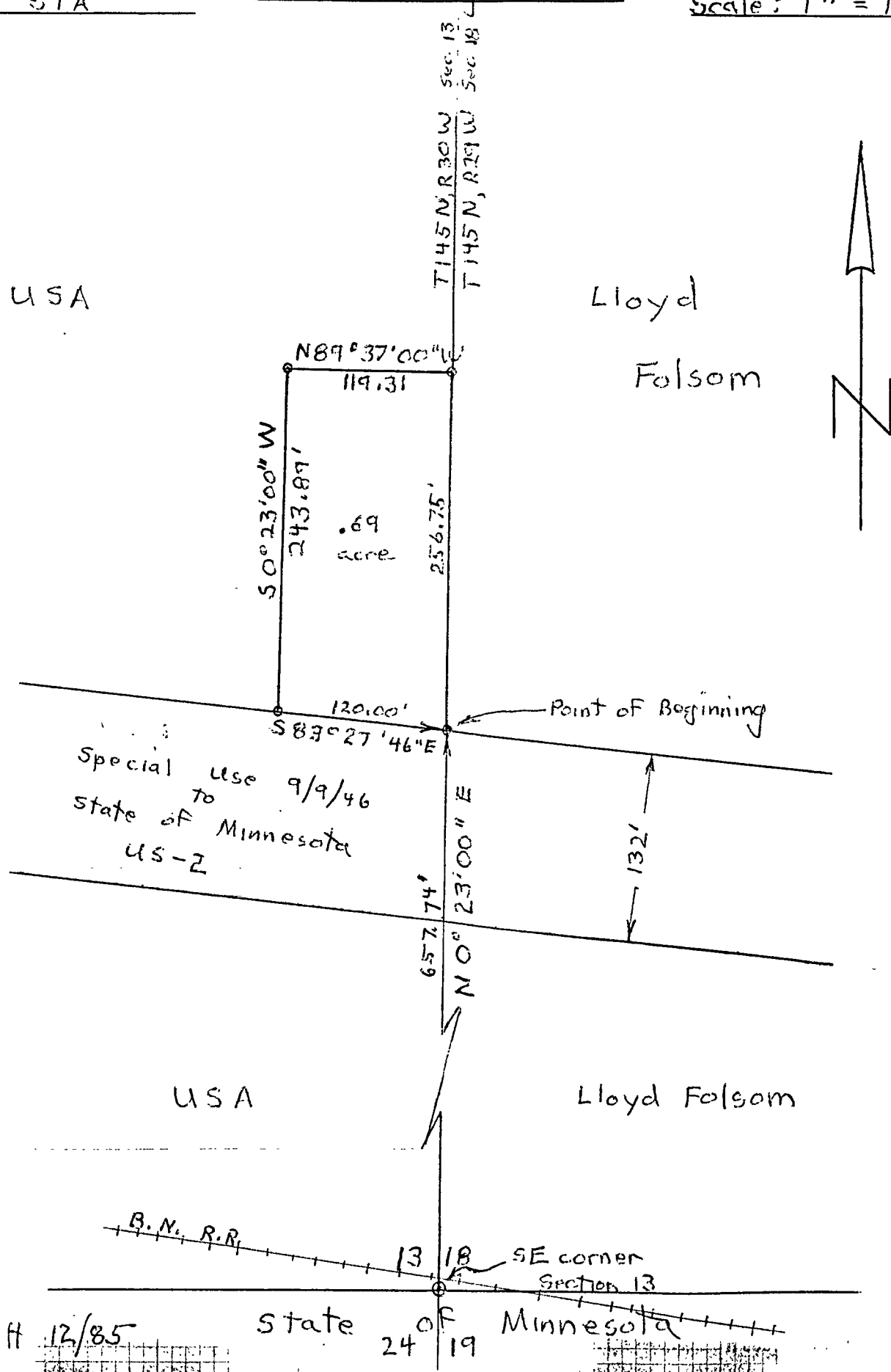


5450 Title Claims, Sales
Folsom, Lloyd
0186 STA

Chippewa National Forest
Cass Lake Ranger District

T145N, R30W, 5th PM
Section 13
Scale: 1" = 100'



USA

Lloyd
Folsom

USA

Lloyd Folsom

BDH 12/85

state of Minnesota
24 19