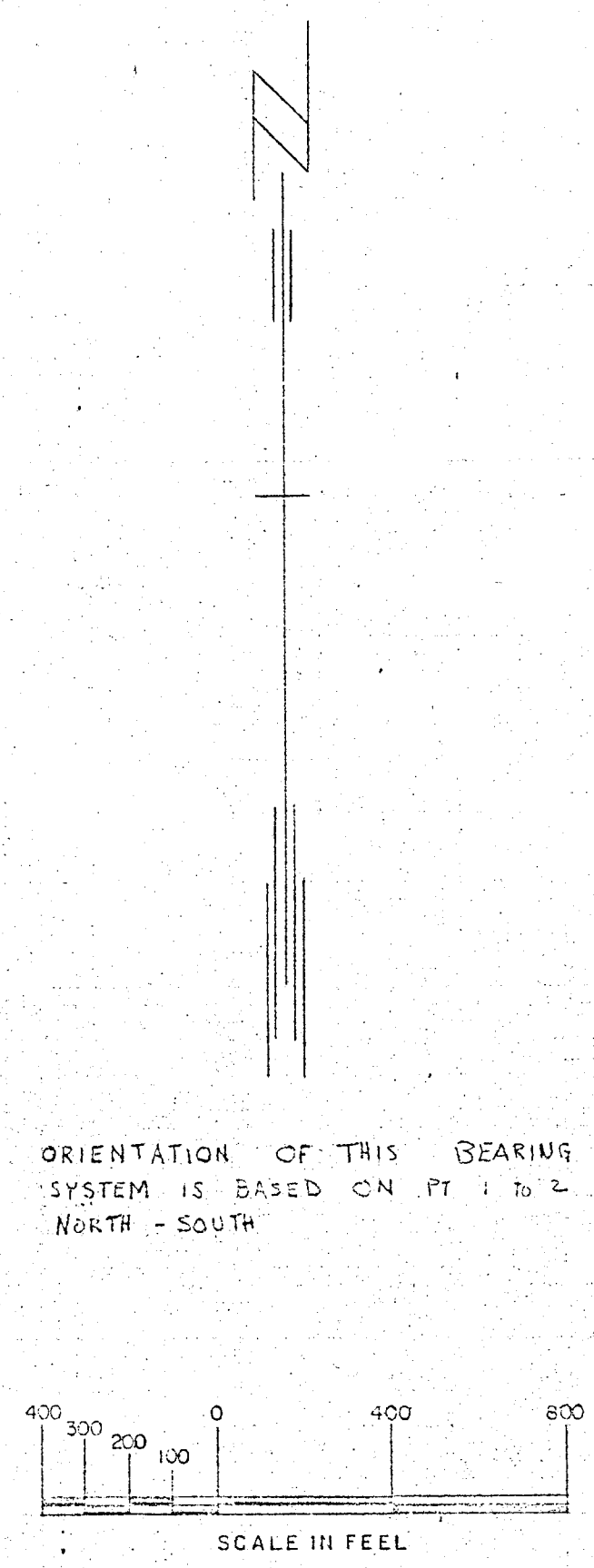
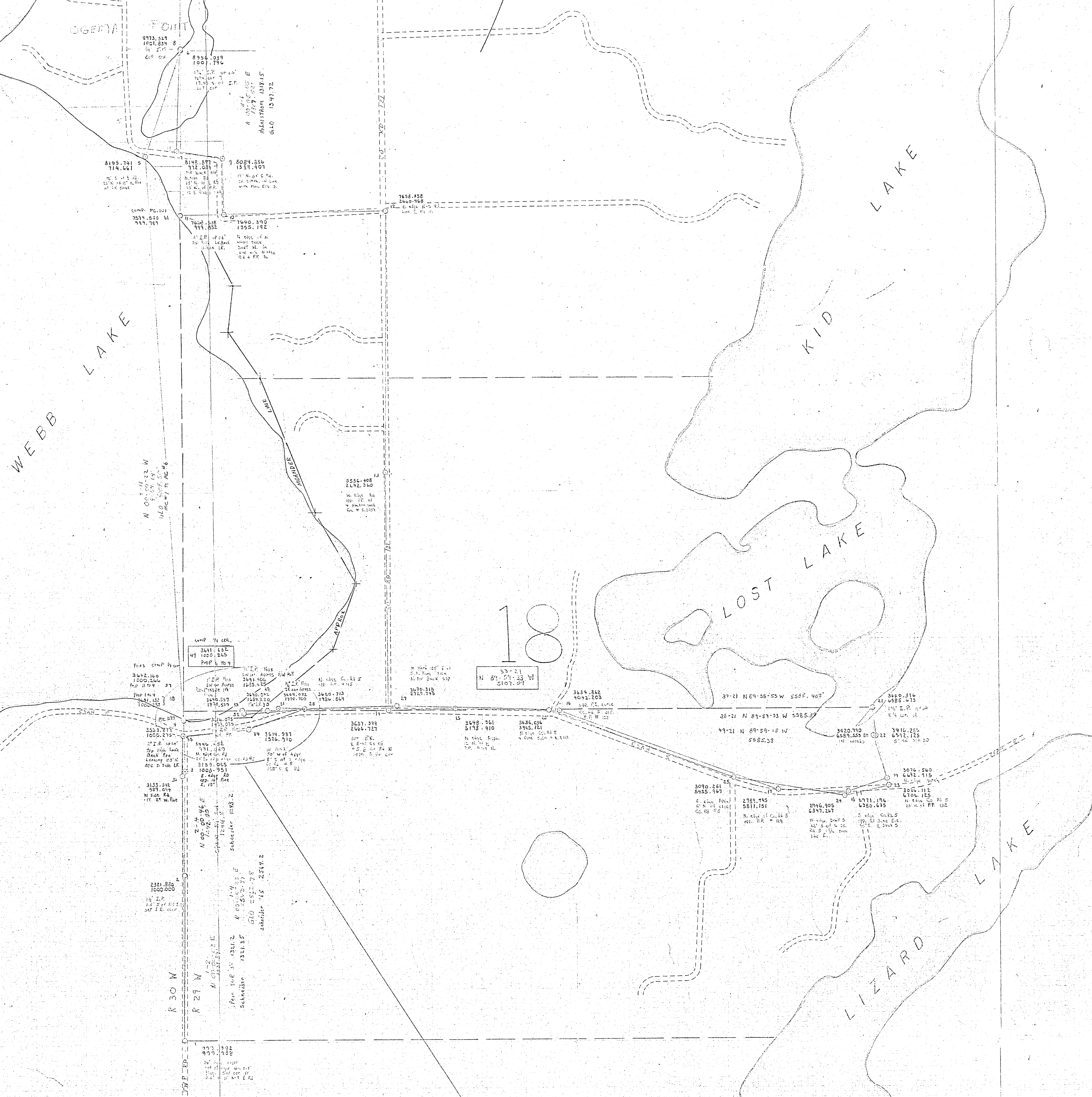


9000  
8600  
8200  
7800  
7400  
7000  
6600  
6200  
5800  
5400  
5000  
4600  
4200  
3800  
3400  
3000  
2600  
2200  
1800  
1400  
1000



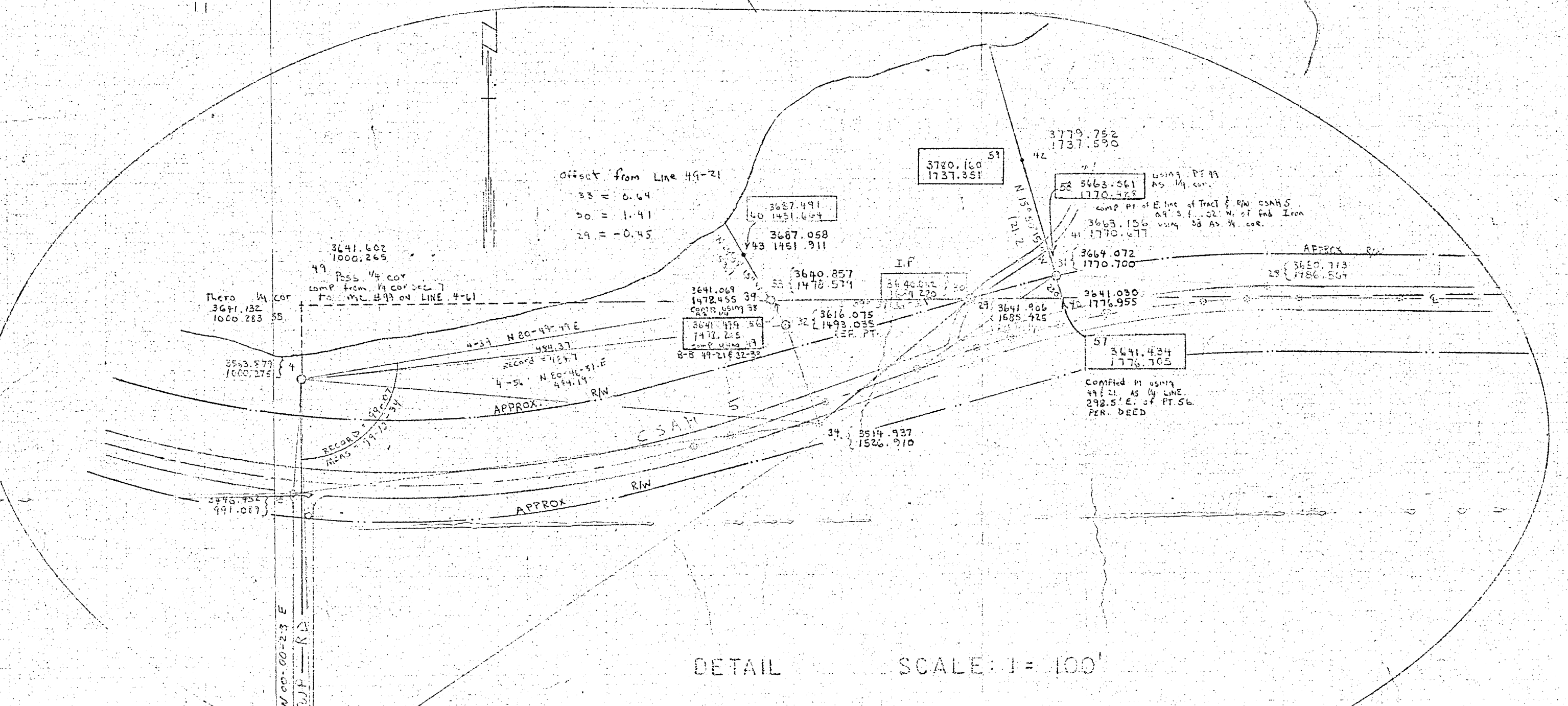
ORIENTATION OF THIS BEARING SYSTEM IS BASED ON PT 1 TO 2 NORTH - SOUTH

○ IRON PIPE FOUND  
⊙ SPIKE SET

WEBB LAKE WATER ACCESS SITE  
CASS COUNTY NEAR HACKENSACK  
Section 18 Twpsh 140 N Rge 23W 5th PM.  
File. A-338 Req. A-62-15

LAST PT NO. 65 12/1/81

SURVEY	DRAWN	CHECKED
T.J.N. Aug 1971	JAG Oct 6 1981	DAE Oct 22 1981
	REVISED JAG 12-2-1981	DAE 12-17-1982



DETAIL SCALE: 1" = 100'