

N

John Linner

Has been sold 1990

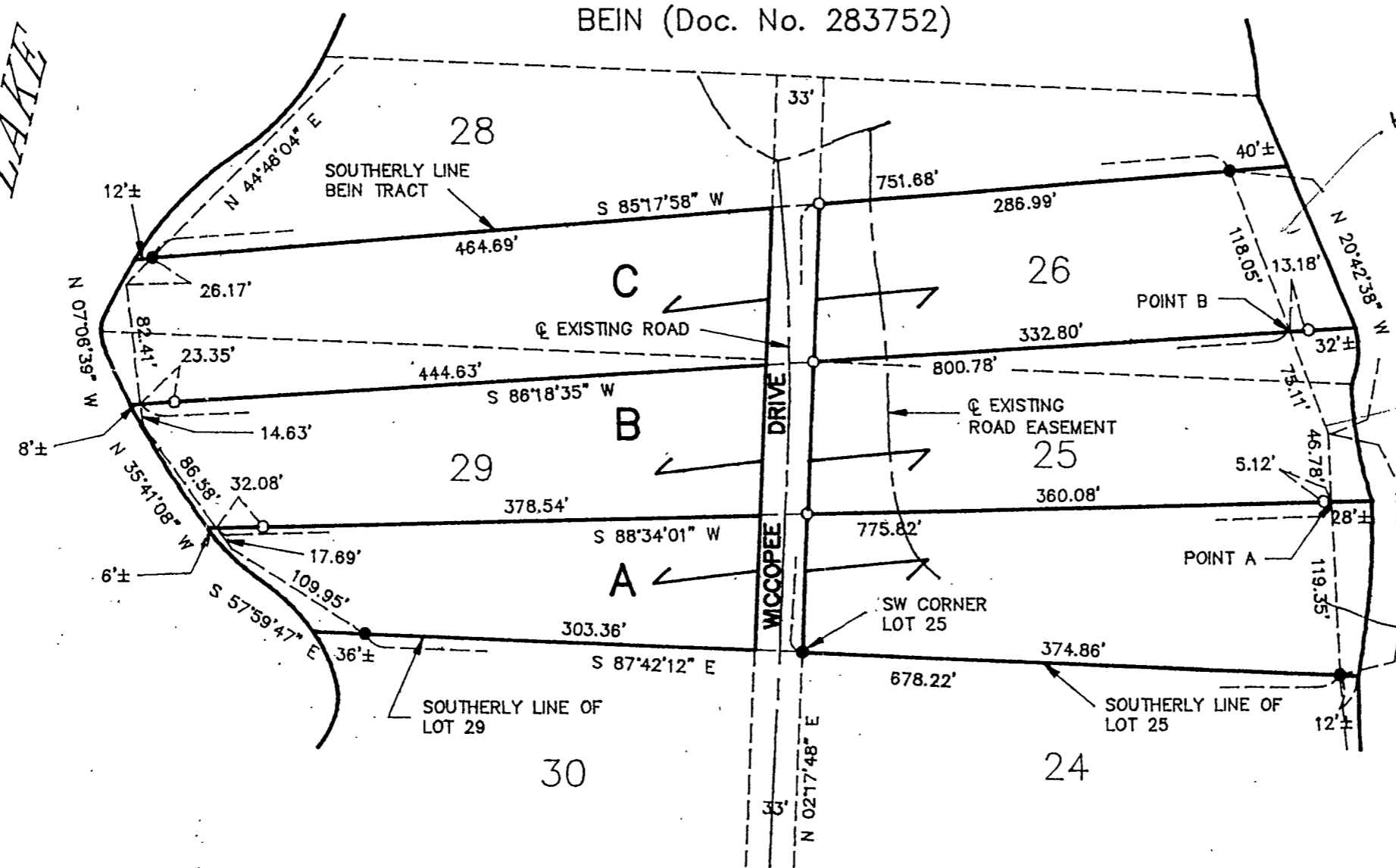
To remain

To be sold to

SYLVAN LAKE

SYLVAN LAKE

BEIN (Doc. No. 283752)



JOHN H. LINNER, M.D.
5040 MALIBU DRIVE
EDINA, MN 55436

612-933-7705

1 INCH = 100 FEET

MONUMENT FOUND IN PLACE

S