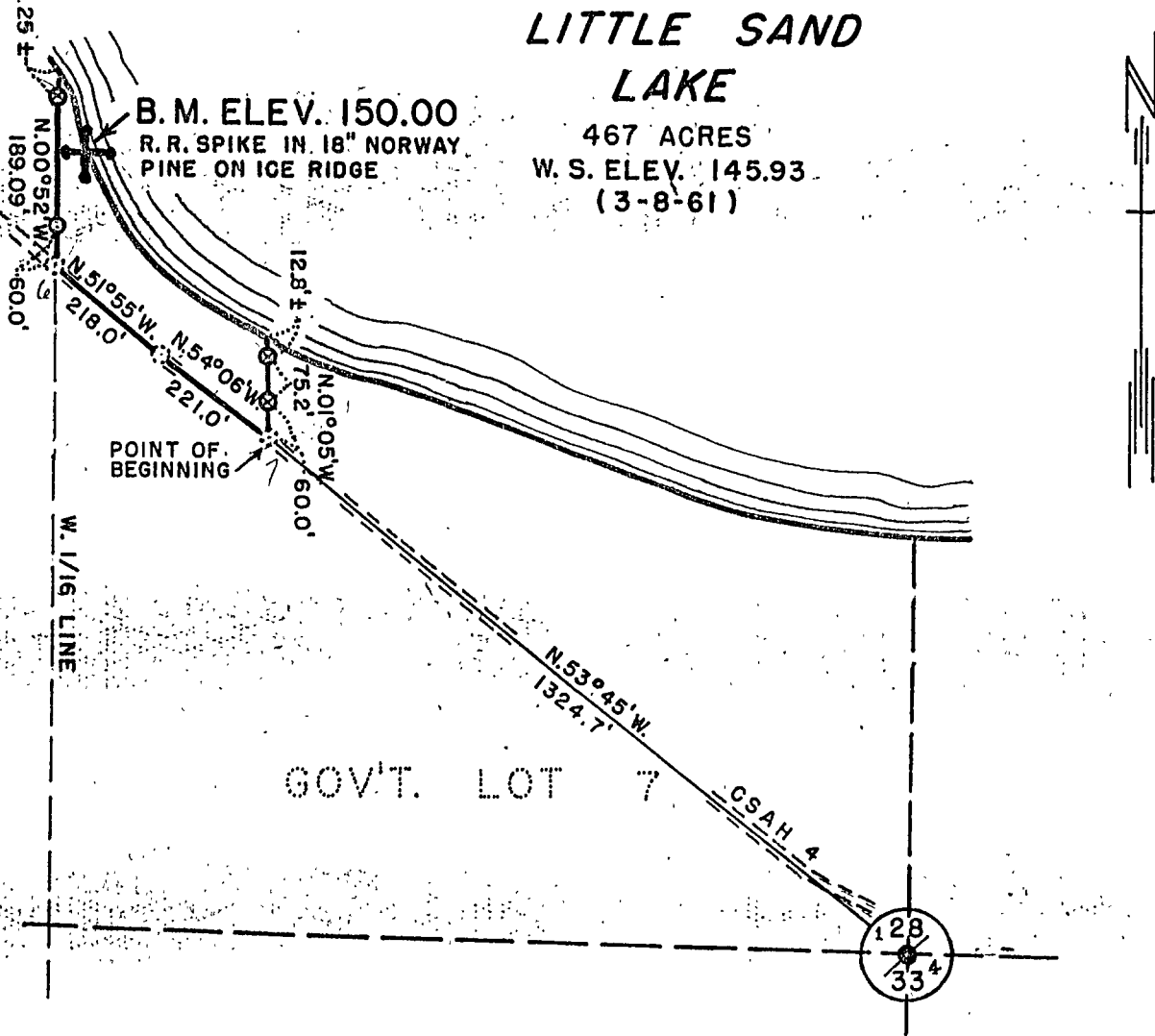
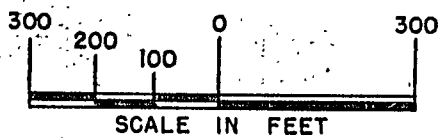


# LITTLE SAND LAKE

467 ACRES  
W. S. ELEV. 145.93  
(3-8-61)



**TRACT 1 - 1.3 ACRES**  
PART OF GOV'T LOT 7, SEC. 28  
**HAROLD I. & LEAH K. FANTH**  
NOVEMBER 9, 1961  
BOOK 121 PAGE 598  
DOCUMENT NO. 168843



- IRON MARKER IN PLACE
- IRON MARKER SET
- ⊕ R.R. SPIKE
- ⊗ CONSERVATION MARKER SET (ESB NOV. '68)

MINNESOTA CONSERVATION DEPARTMENT		
DIVISION OF GAME & FISH		
PROPERTY MAP		
LITTLE SAND LAKE PUBLIC ACCESS		
CASS CO. NEAR REMER		
SEC. 28	T. 142 N. R. 26 W.	5 TH P.M.
DRAWN DAD	BUREAU OF ENGINEERING	SURVEY
CHKD. AGC		KMN FEB. 1961
DATE 3-24-61		ESB NOV. 68
REVISED MES. 12-12-68	<i>R. P. Owens</i> 7-3-61 CHIEF ENGINEER	DATUM
REQ	SHEET	PROJECT
01-46		FILE