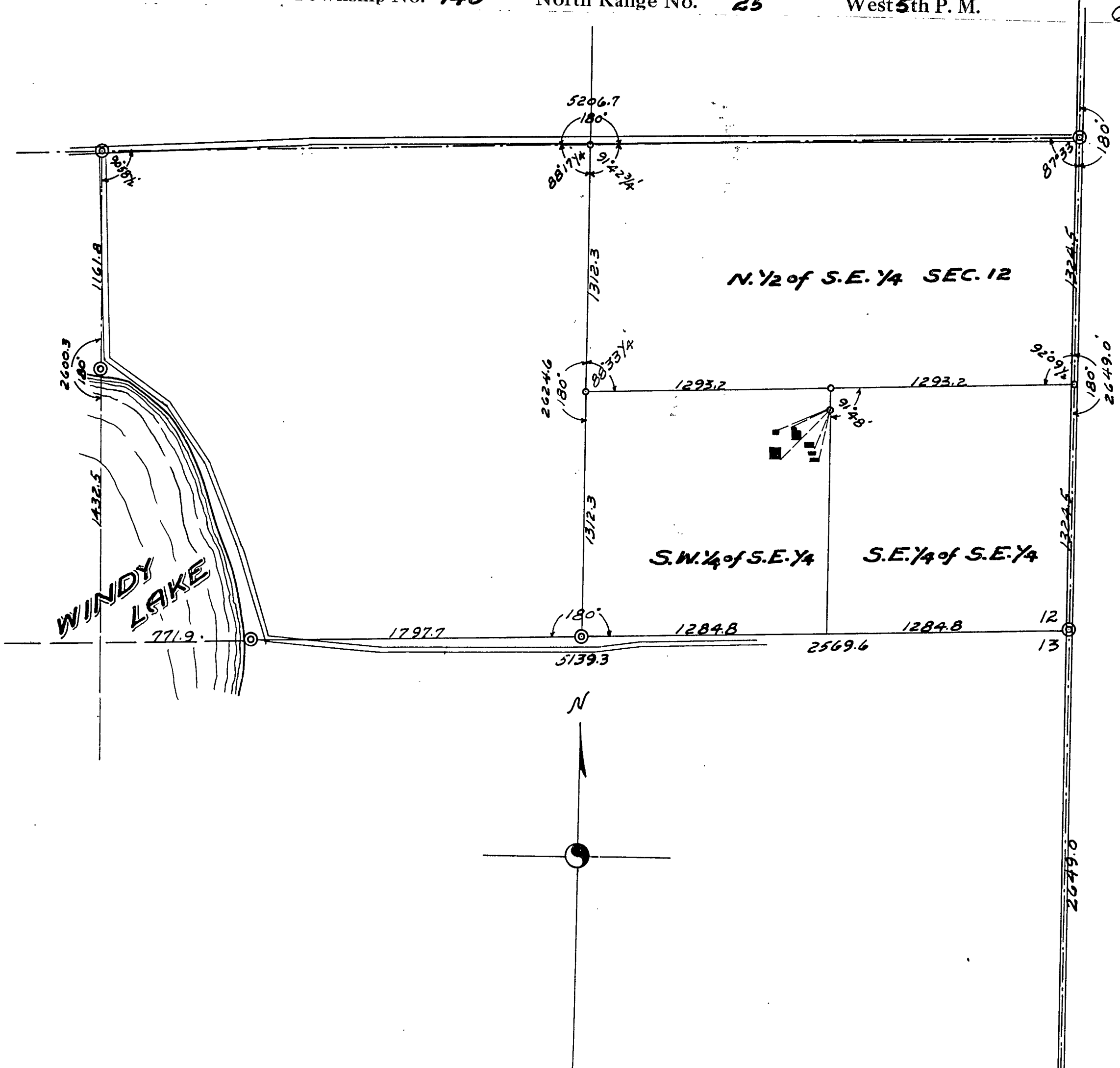


SURVEYOR'S RECORD

Survey of
 Made at the request of
 On the **4th to 9th**

SECTION 12
FEDERAL LAND BANK
 Day of **May** A. D. 1931
 Township No. **140** North Range No. **25** West **5th** P. M.

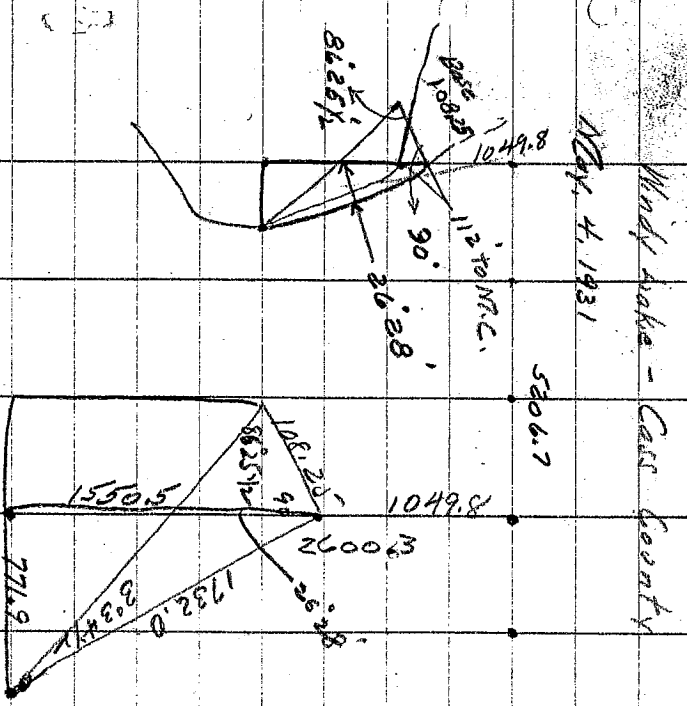
Pl. W. W. W.



FIELD NOTES OF NEW CORNERS ESTABLISHED

Corners	Witness Trees	Inches Diam'r	Courses They Bear	Dist.	Corners	Witness Trees	Inches Diam'r	Courses They Bear	Dist.
N.C. - 11+12	Govt stp.	-	N. 50 1/2° E.	34.3	From a point on the 1/16 line, 113.0' South of 1/16 N. T. Sec. 12, 140-25. Thence S. 44° 07' W. 213.0' to S.E. Cor. Barn. " S. 44° 07' W. 373.0' " " " " Hoopsc. " S. 21° 35' W. 220.6' " " " " Red Coop. " S. 14° 11' W. 280.2' " " " " Garage. " S. 63° 18' W. 220.0' " " " " Barn. " S. 67° 39' W. " " " " Out building.				
North shore	Oak	4"	N. 21° W.	31.0'					
1/4 - 11+12	Poplar	6"	S. 67° E.	59.7'					
1/4 - 12	Maple	7"	N. 80° W.	79.6'					
East side	Tam. stp.	13"	S. 58° W.	45.0'					
Southeast	Oak	4"	N. 73° W.	61.7'					
Cor. 12	Fence Post	7"	N. 70° E.	42.8'					
	Birch Post	4"	S. 83° W.	30.9'					
1/4 - 12+13	W. Pine	14"	S. 83° W.	13.0'					
	Pt. Rock	5"	N. 45° W.	160.5'					
			N. 62° E.	22.5'					

From X₁₆ # 7 south by Y₁₆ line 1130
 Thence S. 44° 02' W. 213'
 To S. E. Cor of Barn.
 Thence S. 44° 02' W. 373'
 To S. E. Cor of House.
 Thence S. 23° 12' 20.6' To S. E.
 Cor. of Red Coops
 S. 14° 11' W. 280.2' To S. E. Cor.
 Garage. (Sched betw. last two)
 S. 63° 18' 220' To N. W. Cor
 Barn.
 S. 67° 39' W. - N. end of building.



	N.C. SEC	11+12	N. Shore	
	Govt	Stp.	N. 50 1/2° E.	34.3'
	Oak	4"	N. 21° W.	31.0'
		Y4	-	11+12
	Poplar	6"	S	67° E. 59.7'
	Maple	7"	N. 80° W.	29.6'
		Y4	E side	12
	Tam.	13"	S. 58° W.	45.8'
	"	7"	N. 73° W.	61.7'
	East	Con.	12+13	
	Oak	4"	N. 70° E	42.8'
	E Post	7"	S. 83° W.	30.9'
	Birch Post	5.83"	W. 13.0°	
		Y4.	12+13	
	N Pine	14"	N 45° W.	160.8'
	Pt. Rock	5"	N. 60° E.	22.5'