

CERTIFICATE OF SURVEY

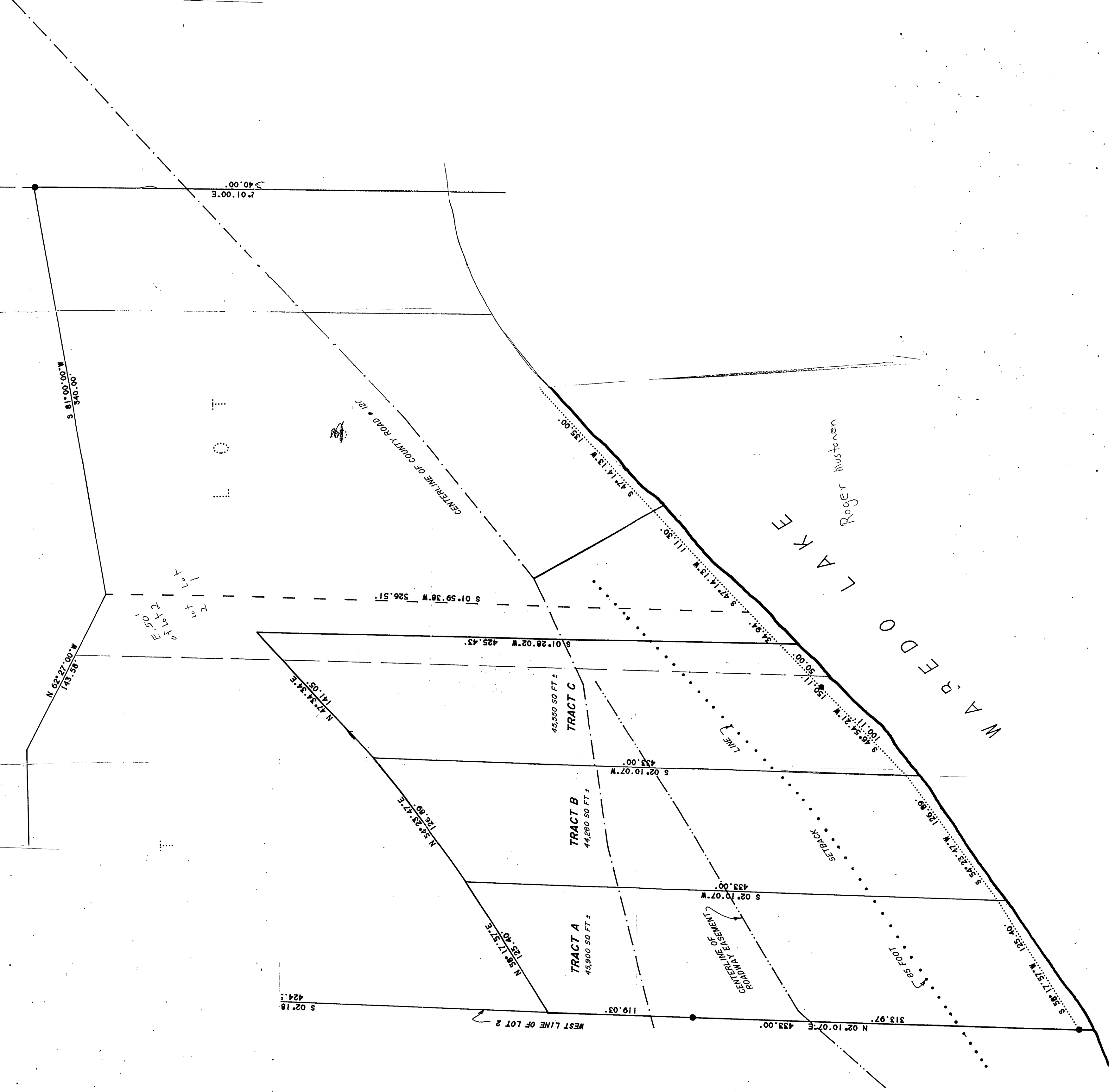
LOTS 1 & 2

OF

WINNIE CHAPMAN BEACH

IN

CASS COUNTY, MINNESOTA



L O T

W A R E D O L A K E  
Roger Mustonen

424.

S 02°18'

119.03

WEST LINE OF LOT 2

N 02°10'07"E 433.00'

S 02°10'07"W 433.00'

S 52°17'57"W 125.40'

N 58°17'57"E 125.40'

TRACT A  
45,900 SQ FT ±

TRACT B  
44,280 SQ FT ±

TRACT C  
45,550 SQ FT ±

CENTRAL LINE OF EASEMENT

S 02°10'07"W 433.00'

S 02°10'07"W 433.00'

S 01°28'02"W 425.43'

S 01°59'38"W 526.51'

50  
1  
5  
1  
1  
2  
2  
5  
1  
1  
2  
0  
1  
1  
2  
1  
1  
1  
2  
0  
1  
1  
2

N 57°54'24"E 141.05'

M 30°50'27" 143.38'

N 62°27'00"W 143.38'

S 81°00'00"W 340.00'

S 01°14'13"W 135.00'

S 47°14'13"W 111.30'

S 46°54'21"W 150.11'

S 54°23'47"W 126.90'

S 52°17'57"W 125.40'