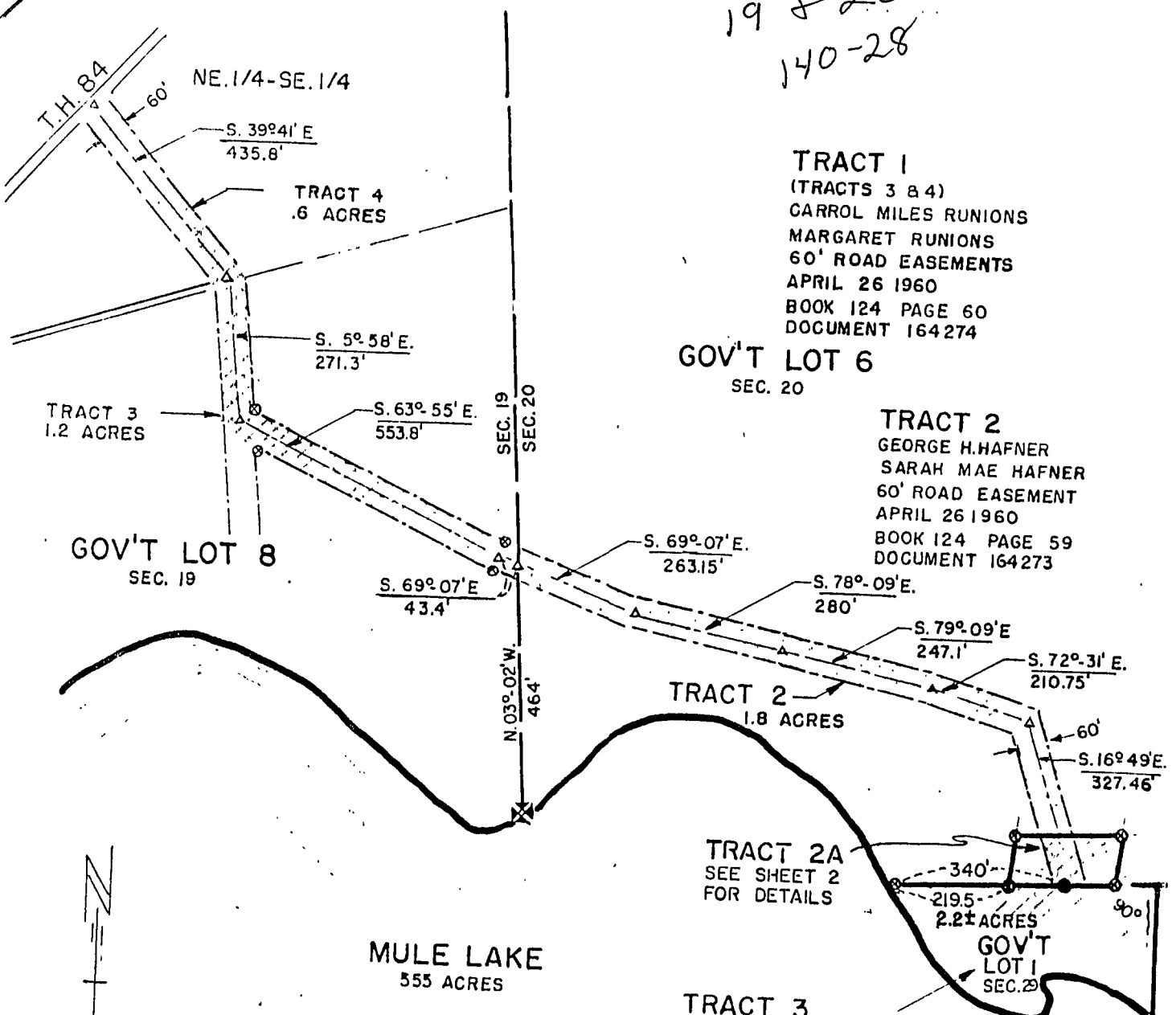


19 & 20
140-28



TRACT 1
(TRACTS 3 & 4)
CARROL MILES RUNIONS
MARGARET RUNIONS
60' ROAD EASEMENTS
APRIL 26 1960
BOOK 124 PAGE 60
DOCUMENT 164274

GOV'T LOT 6
SEC. 20

TRACT 2
GEORGE H. HAFNER
SARAH MAE HAFNER
60' ROAD EASEMENT
APRIL 26 1960
BOOK 124 PAGE 59
DOCUMENT 164273

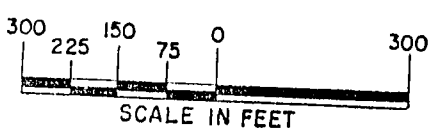
TRACT 2
1.8 ACRES

TRACT 2A
SEE SHEET 2
FOR DETAILS

TRACT 3
CASS COUNTY BOARD
WEST 500' GOV'T 1 SEC. 29-140-28
APRIL 26 1960
BOOK 124 PAGE 59
DOCUMENT 164272

GOV'T LOT 8
SEC. 19

MULE LAKE
555 ACRES



- ⊗ MEANDER CORNER
- △ TRAVERSE POINT
- ⊙ IRON MARKER SET
- PROPERTY OF STATE OF MINNESOTA
- - - EASEMENT FOR ROAD

PUBLIC ACCESS PROPERTY MAP
MULE LAKE
NEAR BACKUS - CASS CO.

19-20-29 140 28 5
C.C.
J. K.
12-18-57

H.J.N. 12-57

EJL 12-19-62 *[Signature]*

P.J.O.
0-2-18