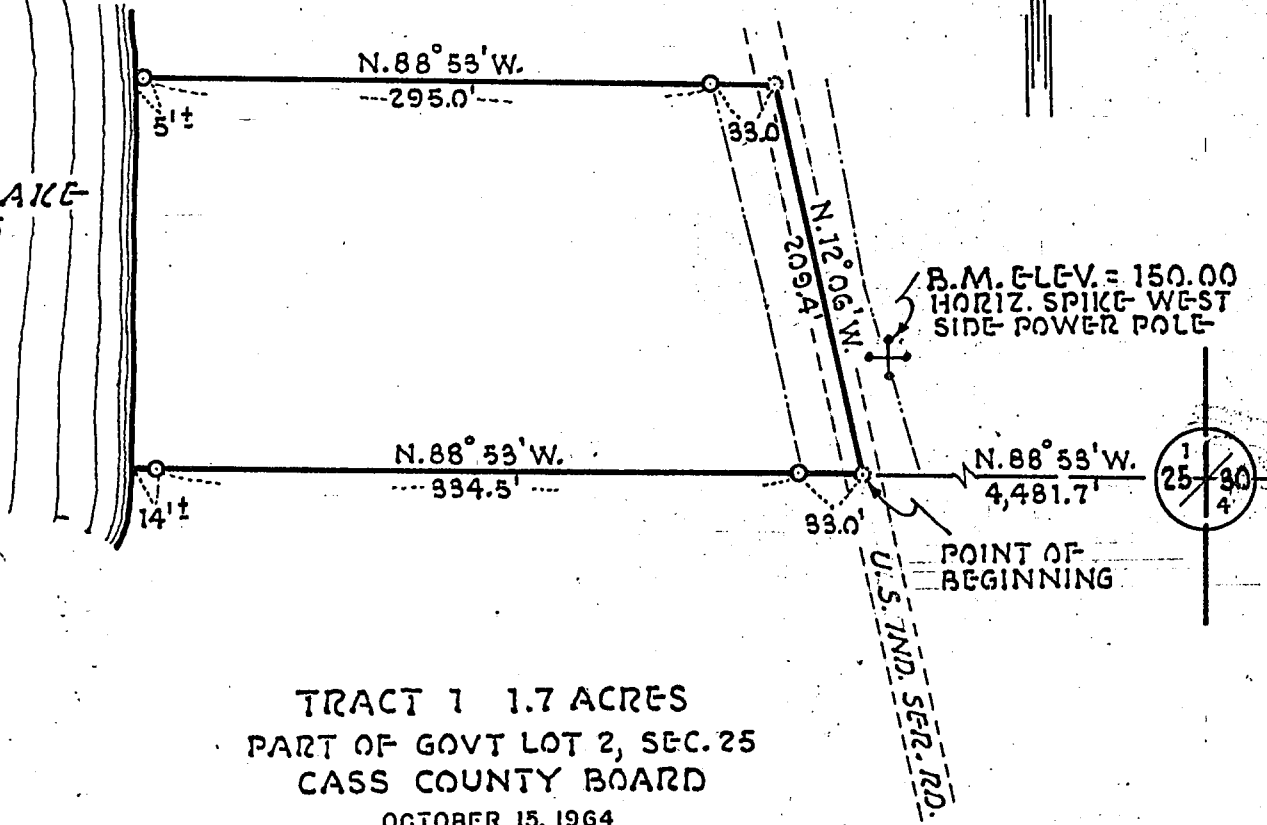


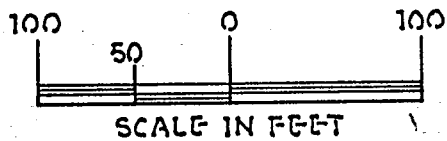
WELSH LAKE
191 ACRES

G O V T L O T 2



TRACT 1 1.7 ACRES
PART OF GOVT LOT 2, SEC. 25
CASS COUNTY BOARD

OCTOBER 15, 1964
BOOK 6 PAGE 368
DOCUMENT NO. 177426



○ CONSERVATION MARKER SET
⊗ R. R. SPIKE SET

MINNESOTA CONSERVATION DEPARTMENT			
DIVISION OF GAME & FISH			
PROPERTY MAP			
WELSH LAKE PUBLIC ACCESS			
CASS CO. - NEAR CASS LAKE			
SEC. 25	T. 144 N.	R. 31 W.	5 TH. P.M.
DRAWN MWR 8-4-64	BUREAU OF ENGINEERING		SURVEY EKR JUL 64
CHECKED GLC 8-10-64	<i>[Signature]</i> 8-11-64 CHIEF ENGR.		DATUM PROJECT
REVISED			FILE
REQ.	SHEET	FILE	
A64-279	1 OF 1	A64-279	