

CERTIFICATE OF SURVEY  
 PART OF GOVT. LOT 5, SEC. 21,  
 T. 140 N., R. 30 W. 21-140-30

NW COR.  
 GOVT. LOT 5

NORTH LINE OF GOVT. LOT 5

N 89° 42' 57" E  
 300.00

650.00

350.00

WEST LINE OF GOVT. LOT 5  
 N 00° 15' 58" E

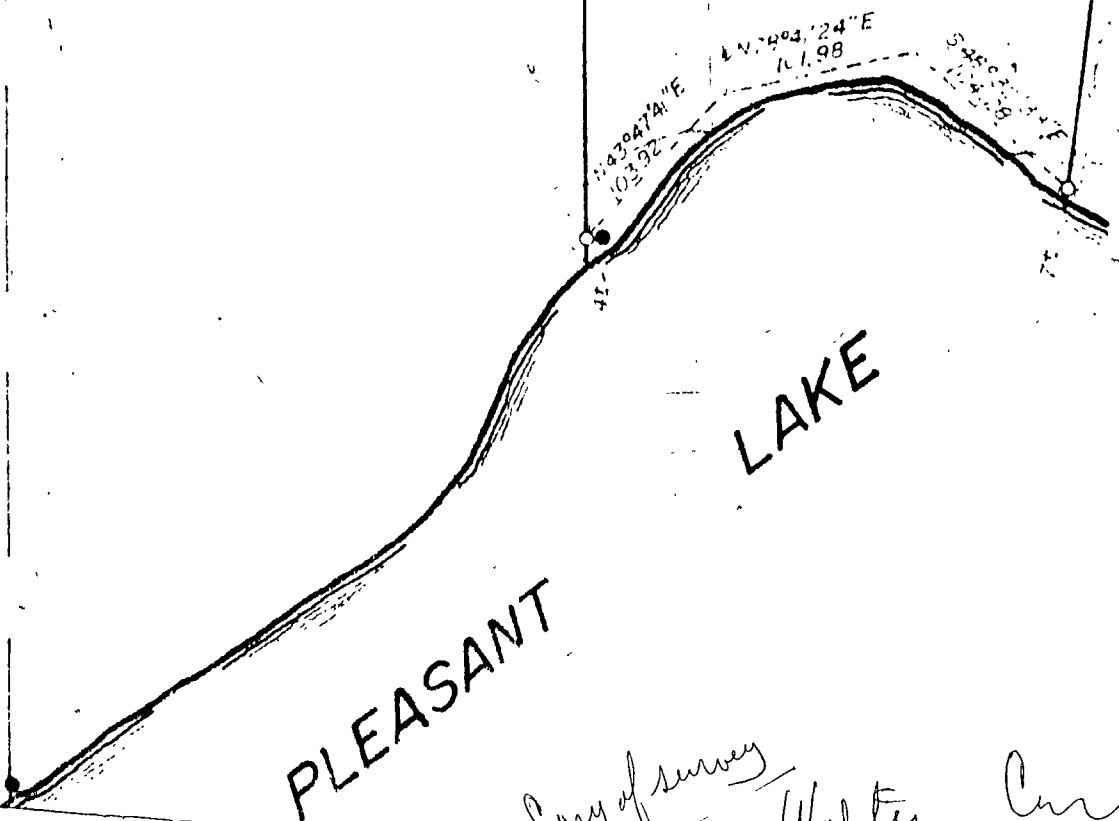
EAST LINE OF WEST 1/4 OF SEC. 21  
 S 70° 15' 58" W  
 44.92

S 79° 40' 32" E  
 R = 181.57  
 L = 6.63  
 S 89° 44' 19" E  
 R = 41.35

N 80° 30' 38" E  
 49.17

Δ = 49° 00' 02"  
 R = 300.00  
 L = 256.57  
 Δ = 37° 28' 17"  
 L = 196.20

TRAVELER ROAD



PLEASANT  
 LAKE

Copy of survey

Walter Curo