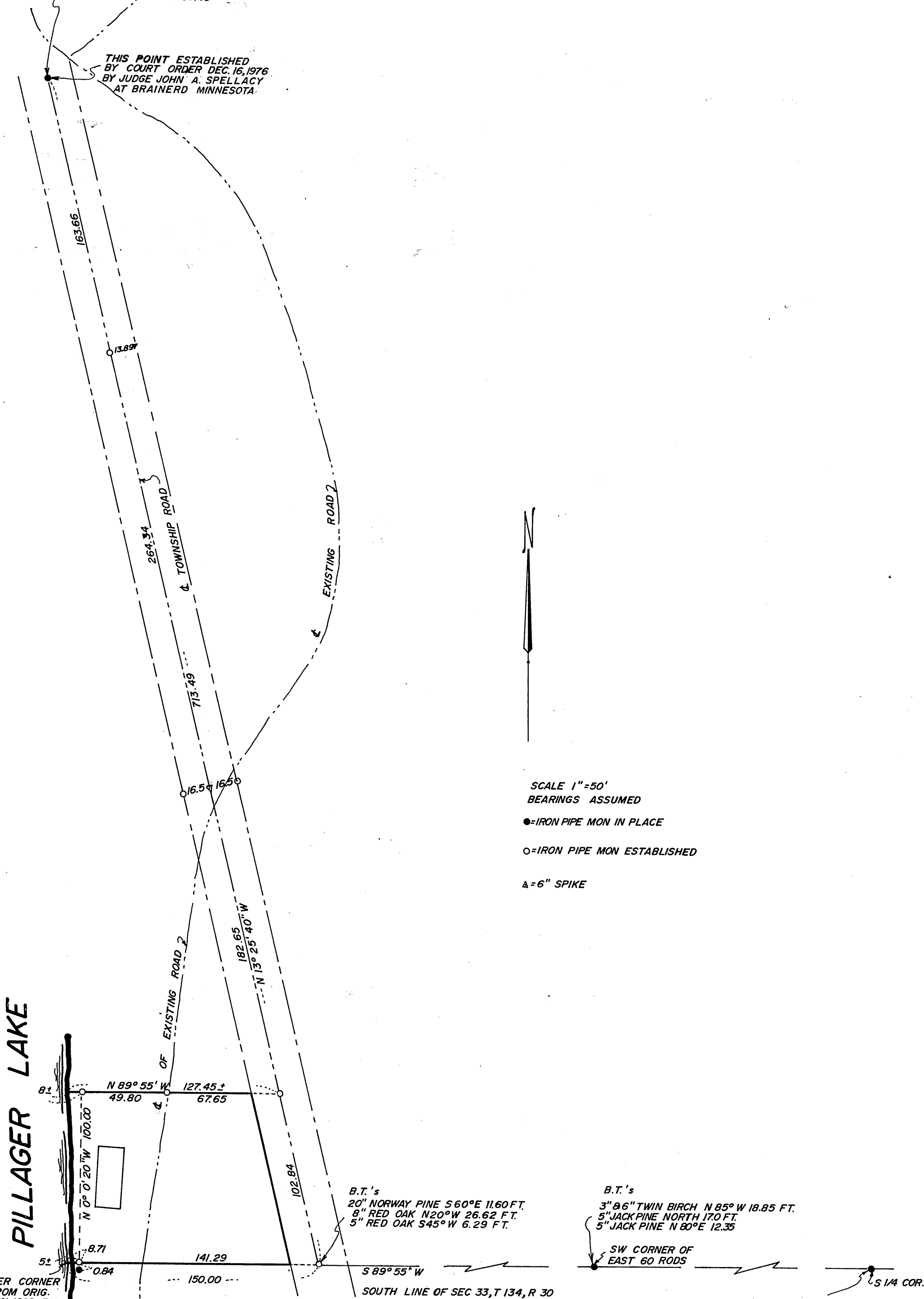


# PLAT OF SURVEY PART OF GOVT LOT 2 SEC 33, T 134 N, R 30 W

B.T.'s  
10" BIRCH SOUTH 57.61  
28" NORWAY PINE SE 53.92  
5" WHITE OAK WEST 37.45

THIS POINT ESTABLISHED  
BY COURT ORDER DEC. 16, 1976  
BY JUDGE JOHN A. SPELLACY  
AT BRAINERD MINNESOTA



SCALE 1" = 50'  
BEARINGS ASSUMED  
● = IRON PIPE MON IN PLACE  
○ = IRON PIPE MON ESTABLISHED  
▲ = 6" SPIKE

PILLAGER LAKE

MEANDER CORNER  
SET FROM ORIG.  
B.T.'s IN 1928 BY  
JOHN W. CURO, A  
REG. LAND SURVEYOR  
IN THE STATE OF MINN.

B.T.'s  
20" NORWAY PINE S 60° E 11.60 FT.  
8" RED OAK N 20° W 26.62 FT.  
5" RED OAK S 45° W 6.29 FT.

B.T.'s  
3" & 6" TWIN BIRCH N 85° W 18.85 FT.  
5" JACKPINE NORTH 17.0 FT.  
5" JACKPINE N 80° E 12.35

B.T.'s  
7" JACKPINE EAST 3.45 FT.  
5" JACKPINE S 30° W 6.15 FT.

#6533

Walter E. Curo  
DATE 9-9-77 REG. No. 11395