

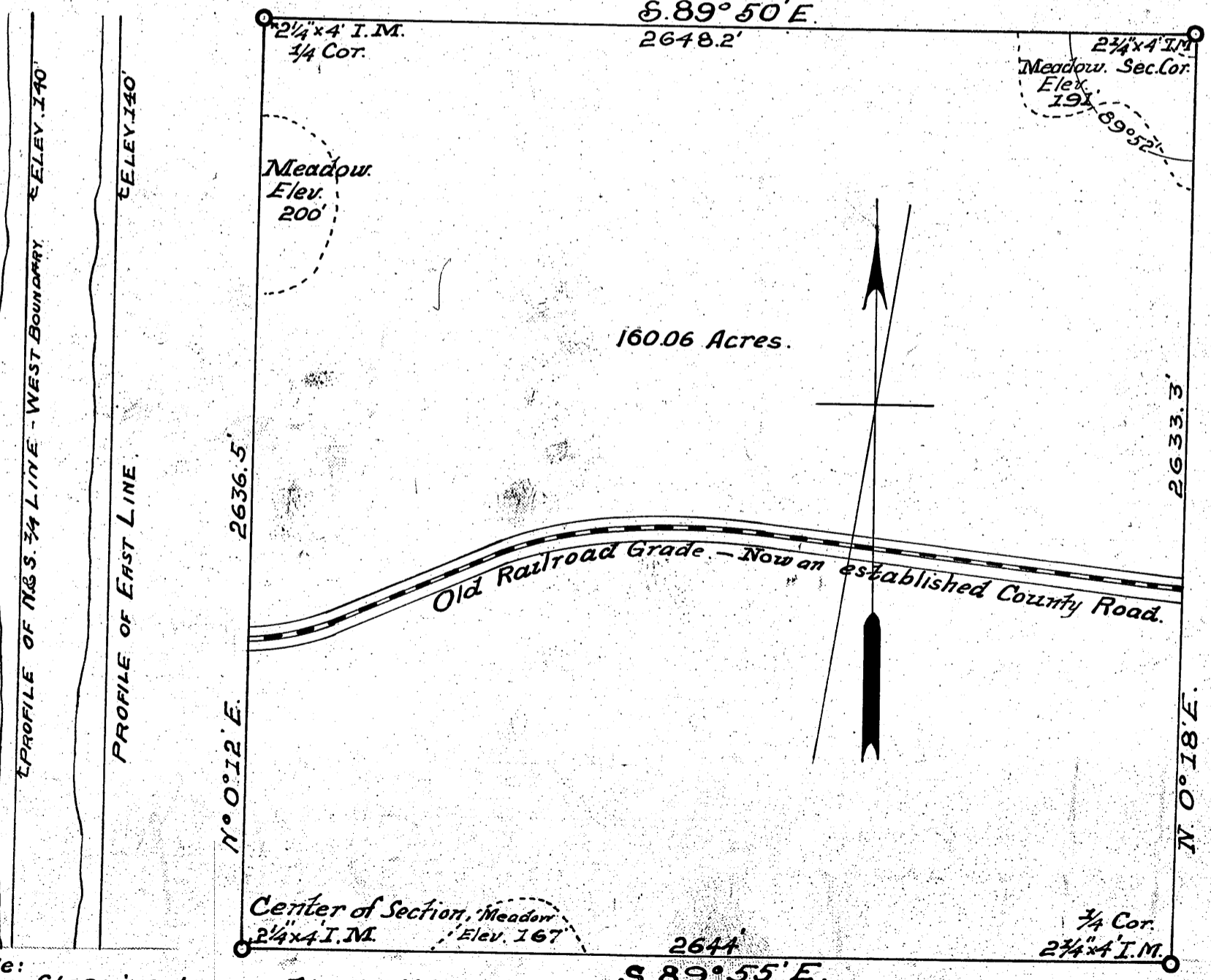
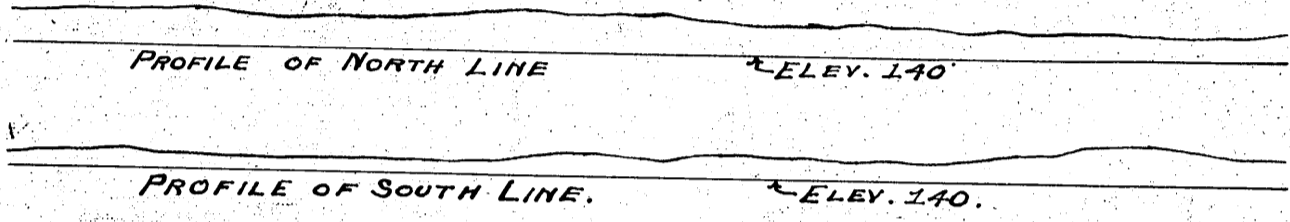
SURVEY OF  
**N.E. 1/4, SEC. 36, TWP. 141, RG. 30.**

CASS COUNTY, MINNESOTA.

*Surveyed by and under the direction of John W. Curo, County Surveyor.*

*Surveyed Dec. 1915.*

*Scale 1" = 400 ft.*



Note:  
 Stocking Lake Elev' 161.  
 Little Webb " 143.

# 6523