

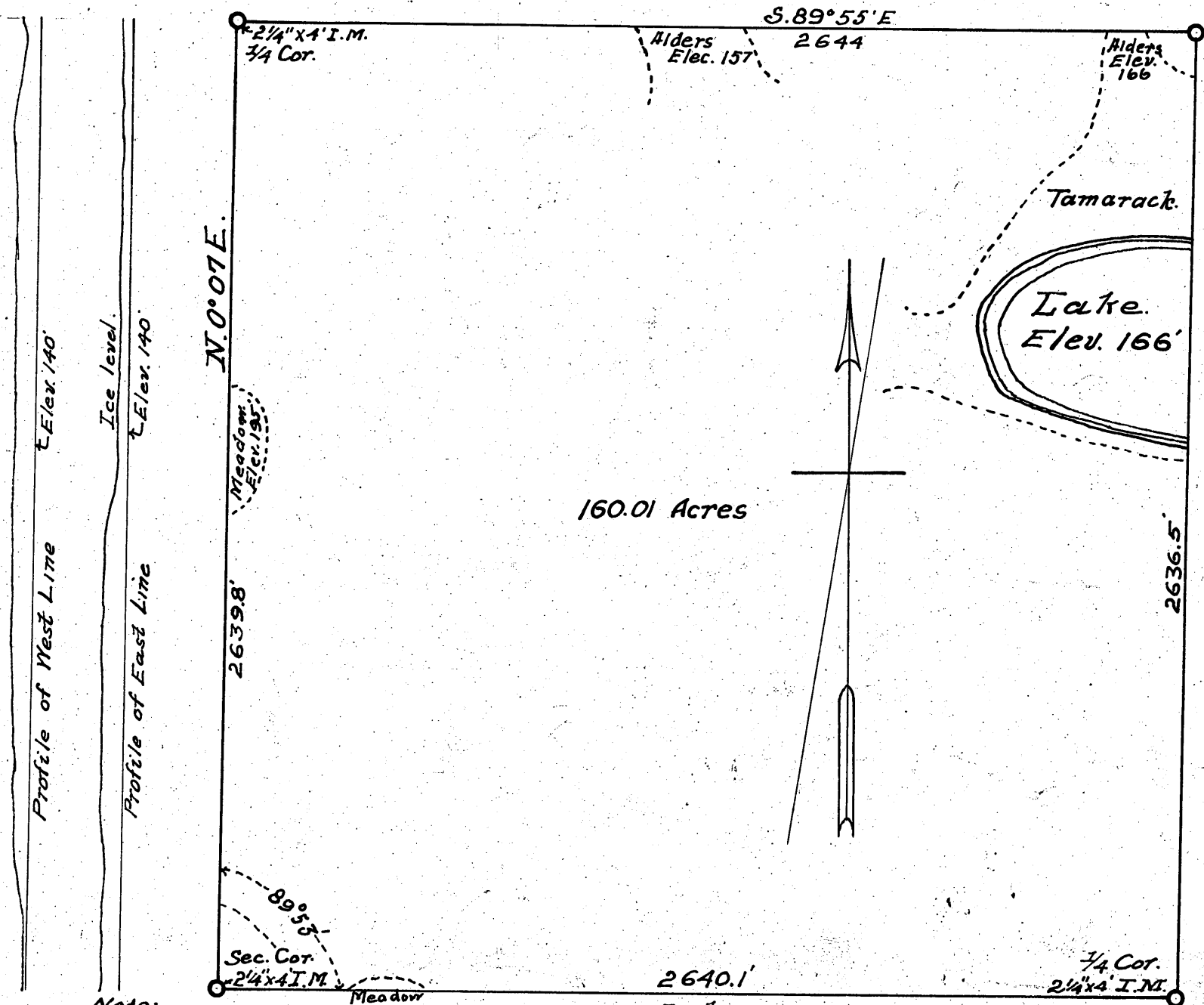
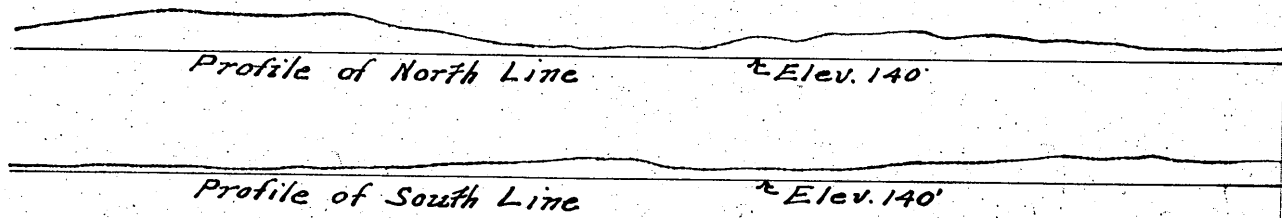
SURVEY OF  
**S.W. 1/4, SEC. 36, TWP. 141, RG. 30.**

CASS COUNTY MINNESOTA

*Surveyed by and under the direction of John W. Curo, County Surveyor.*

*Surveyed Dec. 1915.*

*Scale 1" = 400 ft.*



Note: Stocking Lake Elev 161.  
 Little Webb " 143.