

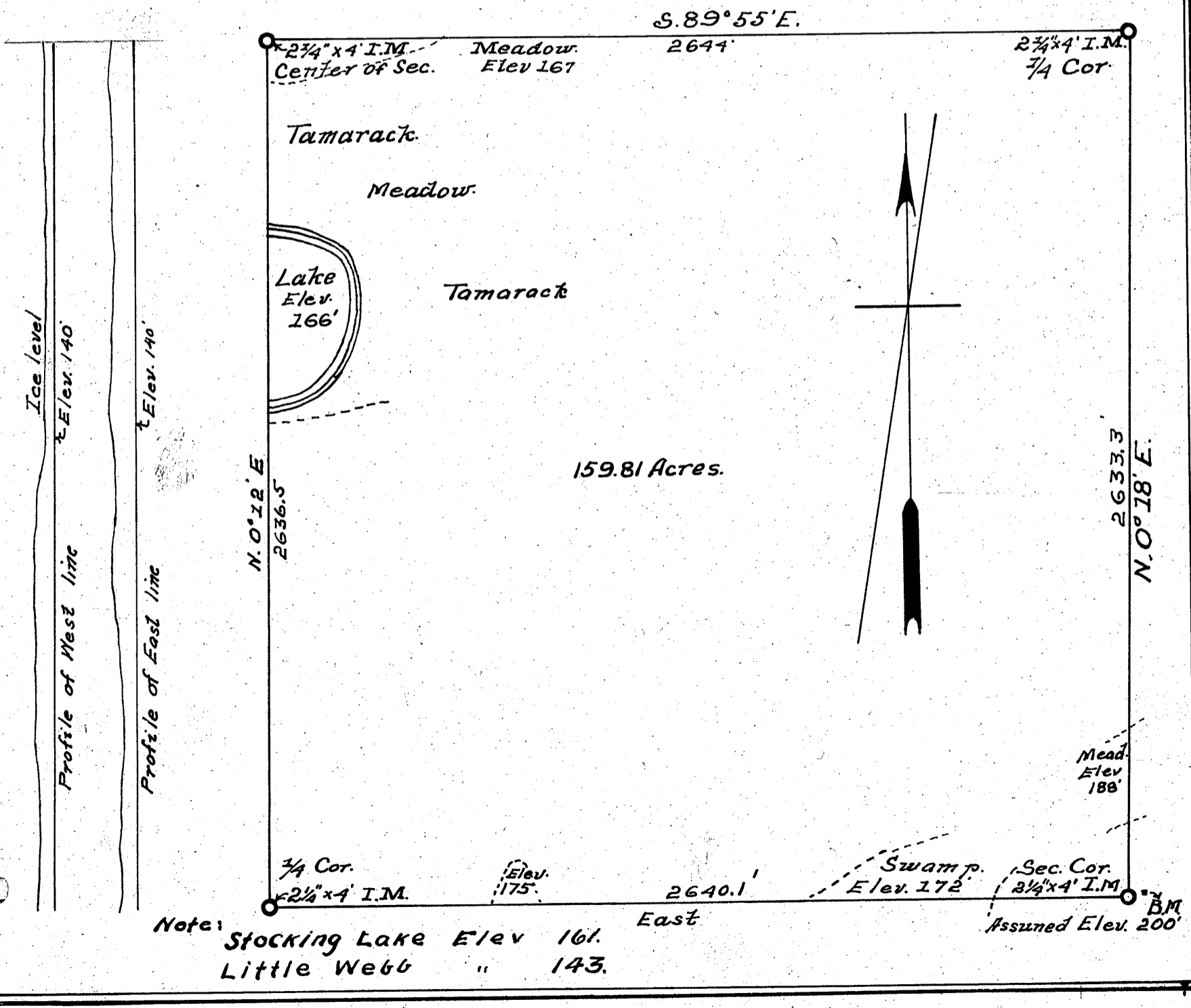
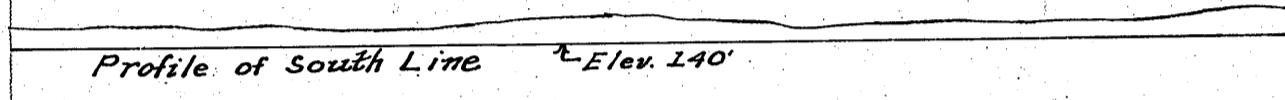
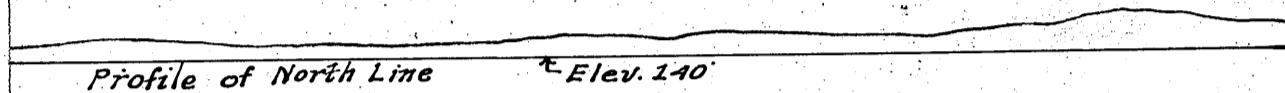
SURVEY OF
S.E. ¼, SEC. 36, TWP. 141, RG. 30.

CASS COUNTY MINNESOTA.

Surveyed by and under the direction of John W. Curo, County Surveyor.

Surveyed Dec. 1915.

Scale 1" = 400 ft.



Note: Stocking Lake Elev 161.
 Little Webb " 143.

#6520