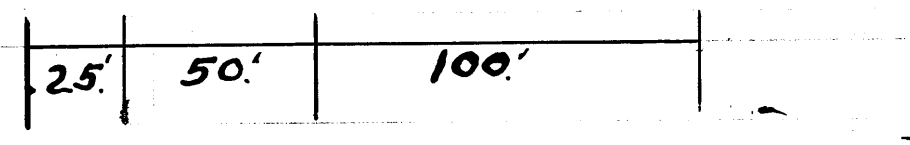


True West line Gov't Lot 9.

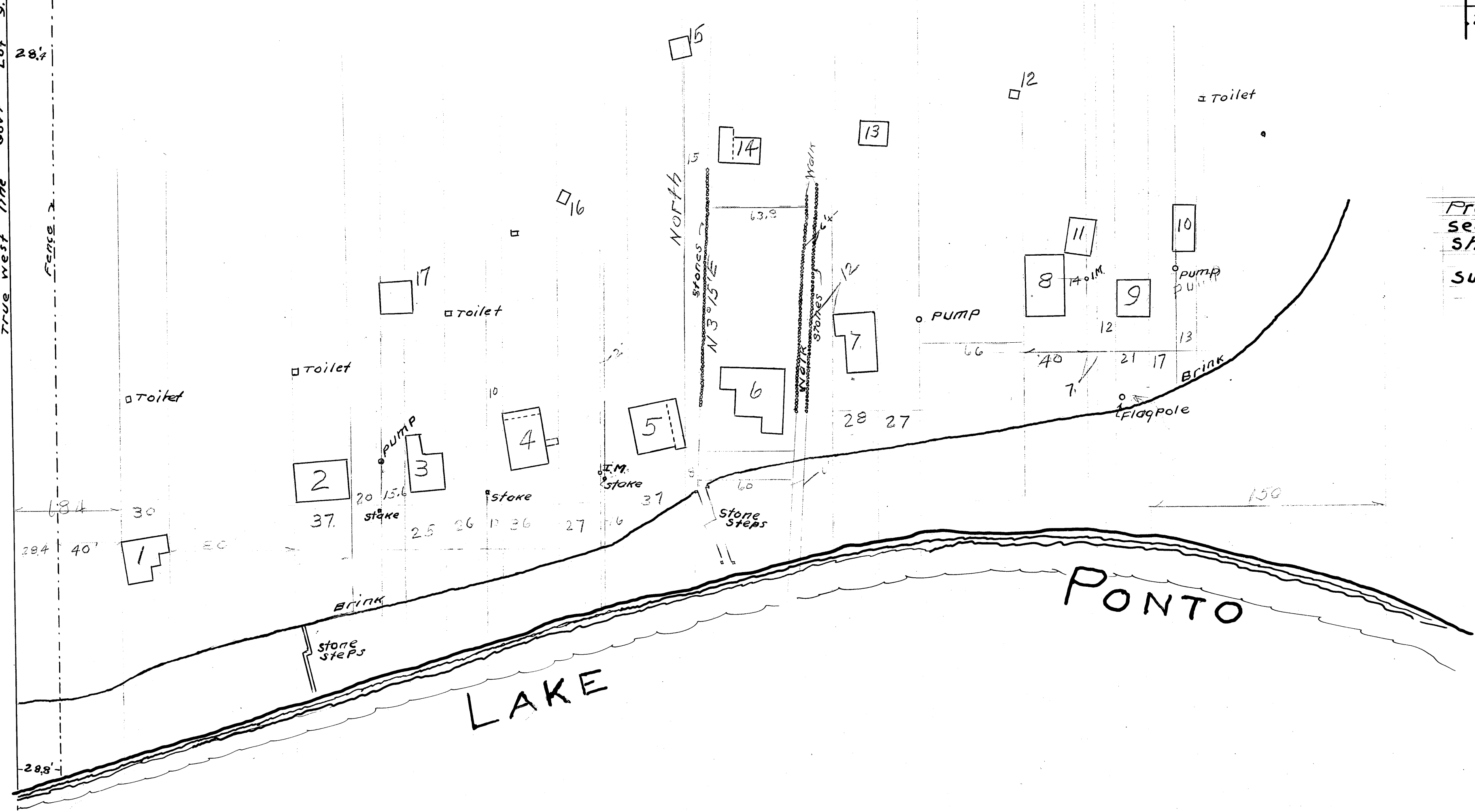
33' 33'

1/16th line → E Road

N
Scale:
1. inch = 50 Ft



Preliminary Survey Part of Gov't Lot 9.
Sec 3-139-29 South of County Road
Showing location of buildings
surveyed By Curo Jan-Feb 1947



68.4

28.4 40'

28.8'

2

3

4

5

6

7

8

9

10

11

13

14

15

12

17

Toilet

Toilet

Toilet

PUMP

PUMP

PUMP

37

20 15.6

25 26 17 26 27 16

37

60

28 27

66

40

7

21 17

150

NORTH

stones

N 3° 15' E

WEST

stones

BRINK

stone steps

stone steps

Flagpole

BRINK

LAKE

PONTO