

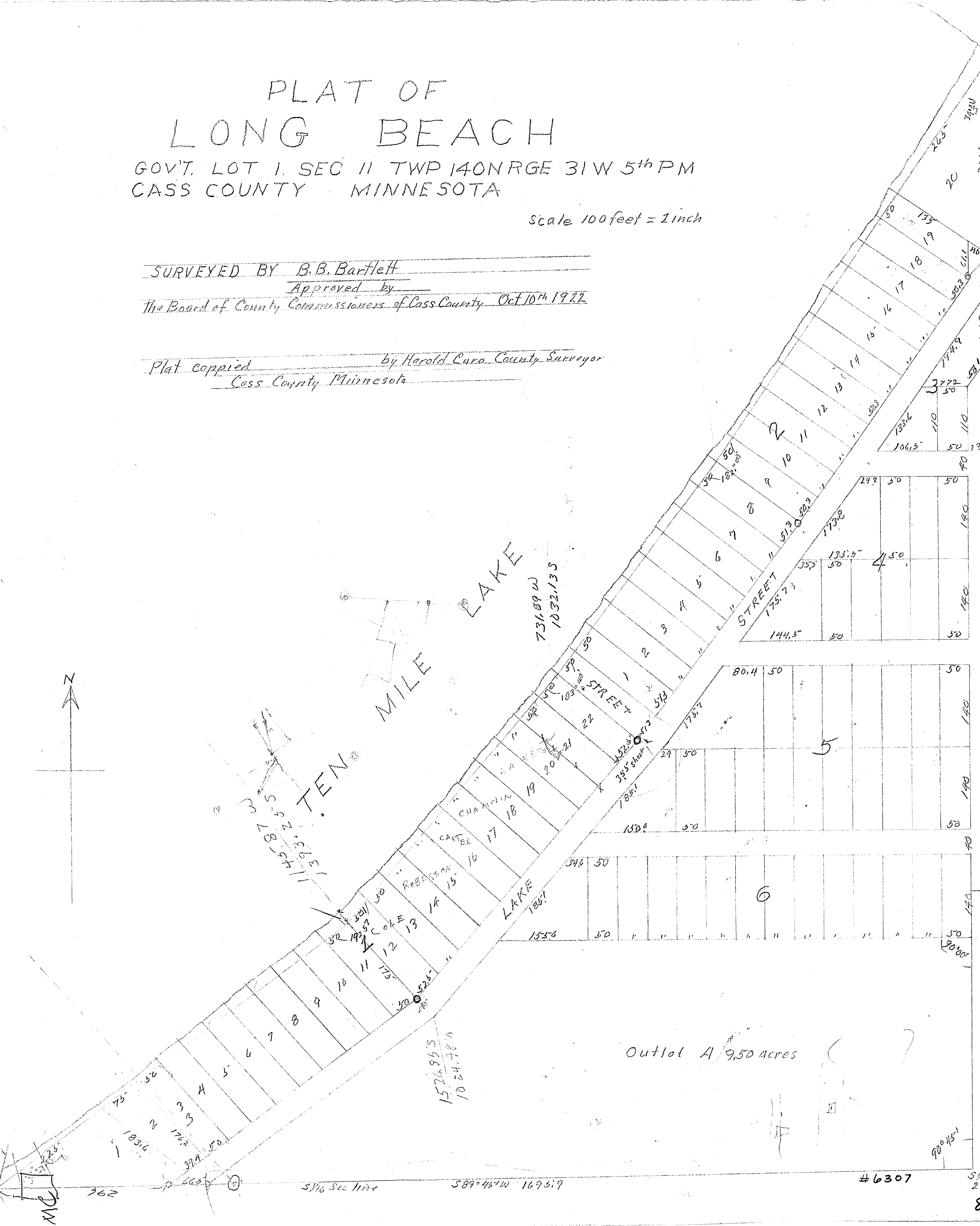
# PLAT OF LONG BEACH

GOV'T. LOT 1, SEC 11 TWP 140N RGE 31W 5th PM  
CASS COUNTY MINNESOTA

Scale 100 feet = 1 inch

SURVEYED BY B.B. Bartlett  
Approved by  
The Board of County Commissioners of Cass County, Oct 10th 1922

Plat copied by Harold Curo County Surveyor  
Cass County Minnesota



Outlot A 9.50 acres

#6307