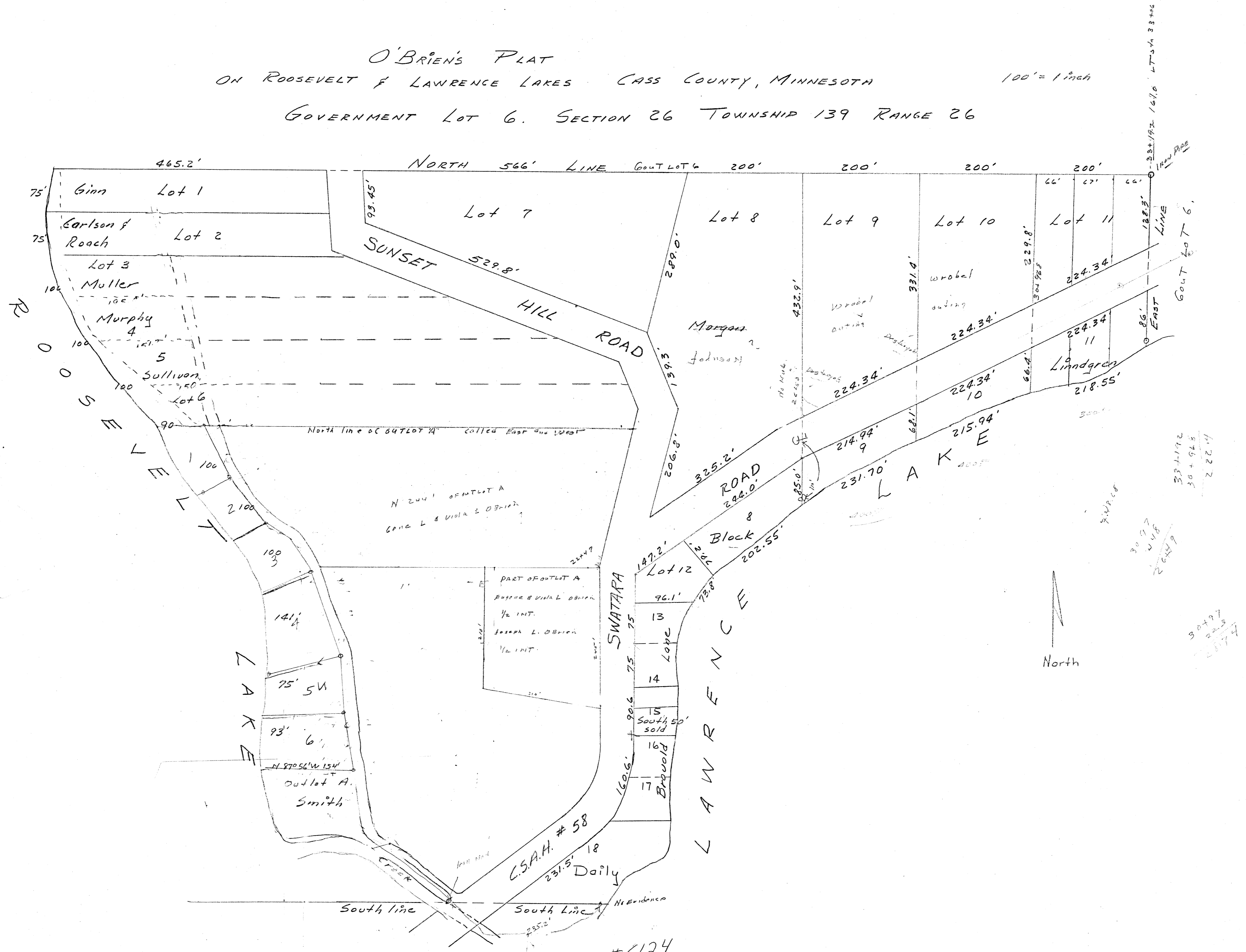


O'BRIEN'S PLAT
ON ROOSEVELT & LAWRENCE LAKES, CASS COUNTY, MINNESOTA

100' = 1 inch

GOVERNMENT LOT 6, SECTION 26, TOWNSHIP 139, RANGE 26



224.34
224.34
224.34
218.55

224.34
224.34
218.55

337.192
576 + 96
218.55

307.7
448
218.55

307.7
448
218.55



#6124